



SOUTHEASTERN LAND SURVEYS

LEONARD F. SWOYER
REGISTERED PROFESSIONAL LAND SURVEYOR

3428 Pleasant Hill Road
Athens, Ohio 45701
740/593-8701

Situated in Section 12, Lodi Township, Town 4, Range 13, Athens County, Ohio and described as follows:

Commencing at a stone* at the estimated southeast corner of the northeast quarter of Section 12; thence North 57 Degrees 08 Minutes 45 Seconds West a distance of 2829.78 feet to a point in Lodi Township Road 96, THE TRUE POINT OF BEGINNING; thence leaving said road and along a new line the following two bearings and distances: 1) South 11 Degrees 34 Minutes 38 Seconds East, passing a set iron pin at 8.75 feet, for a total distance of 135.10 feet to a set iron pin; thence 2) South 22 Degrees 31 Minutes 09 Seconds West, passing a set iron pin at 142.13 feet, for a total distance of 161.55 feet to a point in an existing creek; thence along said creek the following eleven bearings and distances: 1) North 49 Degrees 49 Minutes 14 Seconds West a distance of 25.52 feet to a point; thence 2) South 70 Degrees 00 Minutes 20 Seconds West a distance of 16.45 feet to a point; thence 3) North 87 Degrees 43 Minutes 48 Seconds West a distance of 39.83 feet to a point; thence 4) North 64 Degrees 09 Minutes 38 Seconds West a distance of 45.36 feet to a point; thence 5) North 52 Degrees 46 Minutes 36 Seconds West a distance of 48.53 feet to a point; thence 6) North 55 Degrees 10 Minutes 54 Seconds West a distance of 25.38 feet to a point; thence 7) North 67 Degrees 47 Minutes 01 Seconds West a distance of 88.63 feet to a point; thence 8) North 62 Degrees 13 Minutes 50 Seconds West a distance of 76.91 feet to a point; thence 9) North 65 Degrees 24 Minutes 44 Seconds West a distance of 51.22 feet to a point; thence 10) North 66 Degrees 57 Minutes 20 Seconds West a distance of 37.53 feet to a point; thence 11) North 71 Degrees 23 Minutes 28 Seconds West a distance of 26.19 feet to a point; thence leaving said creek and along a new line North 15 Degrees 57 Minutes 47 Seconds East, passing set iron pins at 37.18 feet, and 214.95 feet for a total distance of 226.74 feet to a point in aforesaid Lodi Township Road 96; thence along said road the following three bearings and distances: 1) South 79 Degrees 07 Minutes 07 Seconds East a distance of 195.74 feet to a point; thence 2) South 70 Degrees 34 Minutes 24 Seconds East a distance of 105.88 feet to a point; thence 3) South 64 Degrees 09 Minutes 01 Seconds East a distance of 123.81 feet to a point, the POINT OF BEGINNING and containing 2.873 acres and being part of the Second Tract containing 60 acres as described in Volume 97 Page 824 of the Athens County Official Deed Records.

*Denotes calculated location of monument based on a previous survey.

Note: Unless otherwise noted, all set iron pins are 5/8 inch diameter rebar and 30 inches in length and capped with a plastic identification marker inscribed " L.F. SWOYER PS 6765."

The above description was prepared under the supervision of Leonard F. Swoyer Registered Professional Land Surveyor No. 6765 and based on a survey performed by Southeastern Land Surveys dated September 30, 2002.

Subject to all easements and right of ways of record.

Description checked for
Mathematical Accuracy
ATHENS COUNTY
ENGINEER'S OFFICE
BY: S. Blaise
DATE: 10-2-02

20

PROPERTY

CONSTRUCTION

SUBDIVISIONS

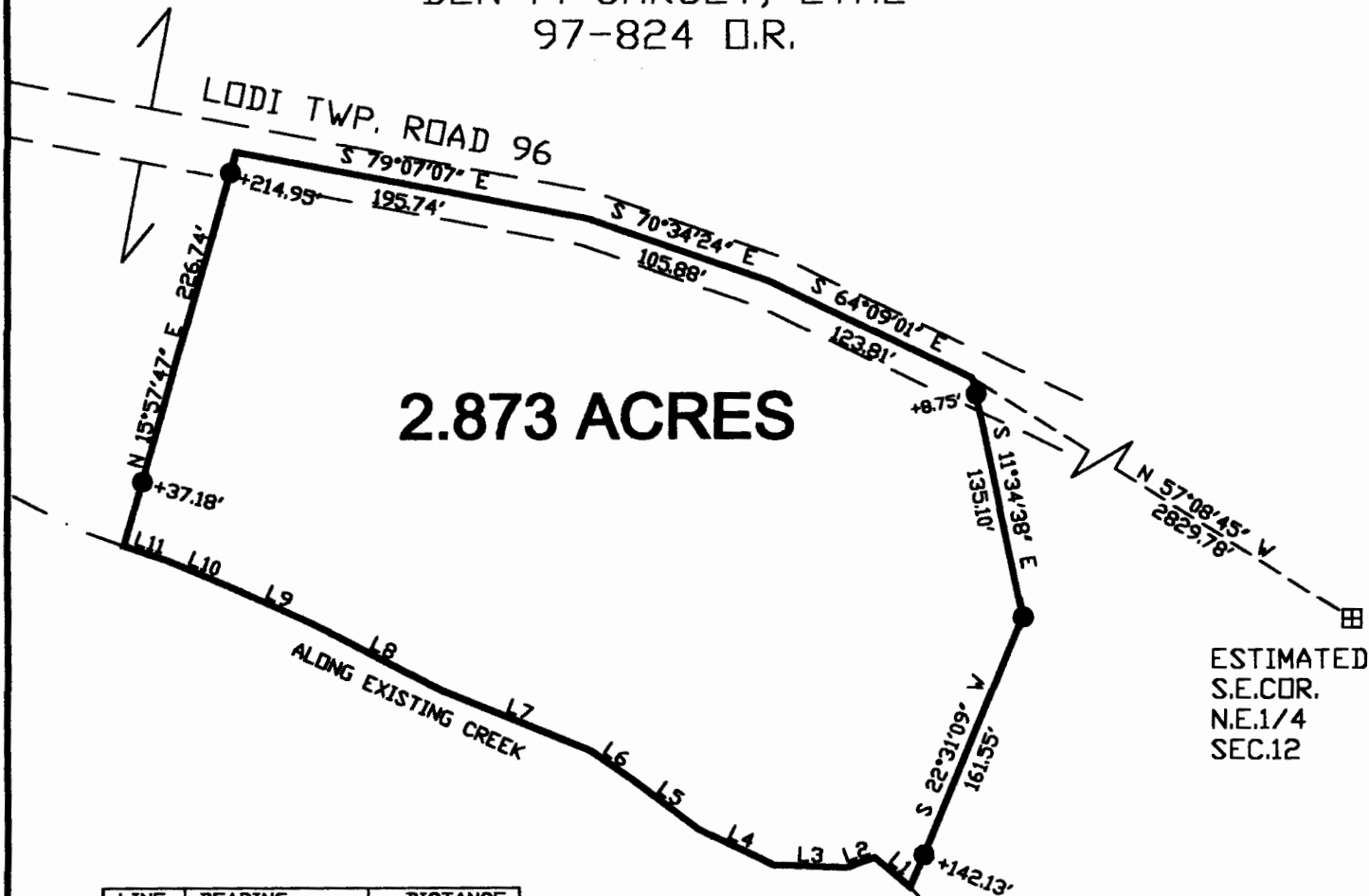


SOUTHEASTERN LAND SURVEYS

LEONARD F. SWOYER
REGISTERED PROFESSIONAL LAND SURVEYOR

3428 Pleasant Hill Road
Athens, Ohio 45701
740/593-8701

BEN F. CARSEY, ETAL
97-824 D.R.



LINE	BEARING	DISTANCE
L1	N 49°49'14" W	25.52'
L2	S 70°00'20" W	16.45'
L3	N 87°43'48" W	39.83'
L4	N 64°09'38" W	45.36'
L5	N 52°46'36" W	48.53'
L6	N 55°10'54" W	25.38'
L7	N 67°47'01" W	88.63'
L8	N 62°13'50" W	76.91'
L9	N 65°24'44" W	51.22'
L10	N 66°57'20" W	37.53'
L11	N 71°23'28" W	26.19'



SCALE: 1" = 100'

- = IRON PIN SET
- ⊠ = STONE (CALC. LOCATION)

BEARINGS ARE TO AN ASSUMED MERIDIAN
AND USED TO DENOTE ANGLES ONLY

BASIS OF BEARING THIS SURVEY:
BETWEEN TWO FOUND IRON PINS ON THE NORTH LINE OF
A 36.756 AC. TRACT (V.358-P.929) = S 89°16'41" W 79.70'

Description checked for
Mathematical Accuracy
ATHENS COUNTY
ENGINEER'S OFFICE

BY: *S. Blausse*
DATE: 10-2-02

Plat of SURVEY OF A 2.873 ACRE TRACT Scale: 1" = 100'

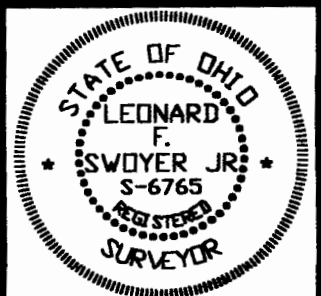
Surveyed for: MR. BEN CARSEY Date: 9-30-02

Subdivision ---

Township LODI Section 12 Town 4 Range 13

Corporation --- County ATHENS State OHIO

Leonard F. Swoyer Jr. Registered Professional Land Surveyor No. 6765



LODI # 12

24