

Legal Description Pre-Approval
APPROVED
All transfers are subject to
Athens County Conveyance Standards

JUN 10 2015

Jill Thompson
Athens County Auditor

Description Checked for
Mathematical Accuracy
Athens County
ENGINEER'S OFFICE
BY: Paul Willard
DATE: 6/9/15

DESCRIPTION OF A 16.75 ACRE TRACT

Situated in Fraction # 1, Sections 14 and 15, T.4, R.13, Lodi Township, Athens County, Ohio and being a part of the Wayne and Julie Myles Tract as described in Vol. 329, Page 2200 Athens County Official Records and being more particularly described as follows:

Beginning at the South-west corner of Fraction#1, (Section 14), Lodi Township, Athens County, Ohio
Thence, along the west-line of Fraction #1

N 3° 05' 27" E, 1436.84 feet to a point in County Road 44, passing iron pin found at 8.73 feet and 1402.44 feet;

Thence, along said road:

S 67° 47' 33" E, 209.95 feet;

S 73° 42' 33" E, 225.52 feet;

S 81° 37' 33" E, 120.22 feet;

thence, leaving said road and along a new line created by this survey:

S 3° 05' 27" W, 1303.93 feet to an iron pin set in the south-line of Fraction #1, passing an iron pins set at 30.00 feet and 953.20 feet;

Thence, along the south-line of Fraction#1 and the North-line of Meridith (221-453 O.R.)

N 87° 04' 42" W, 537.64 feet, passing an iron pin found at 530.99 feet, to the point of beginning and containing 16.75 acres.

Subject to all easements and rights of way of record.

Iron pins set are 5/8 inch by 30 inch long rebar w/ plastic I.D. Cap stamped Branner P.S. 6805

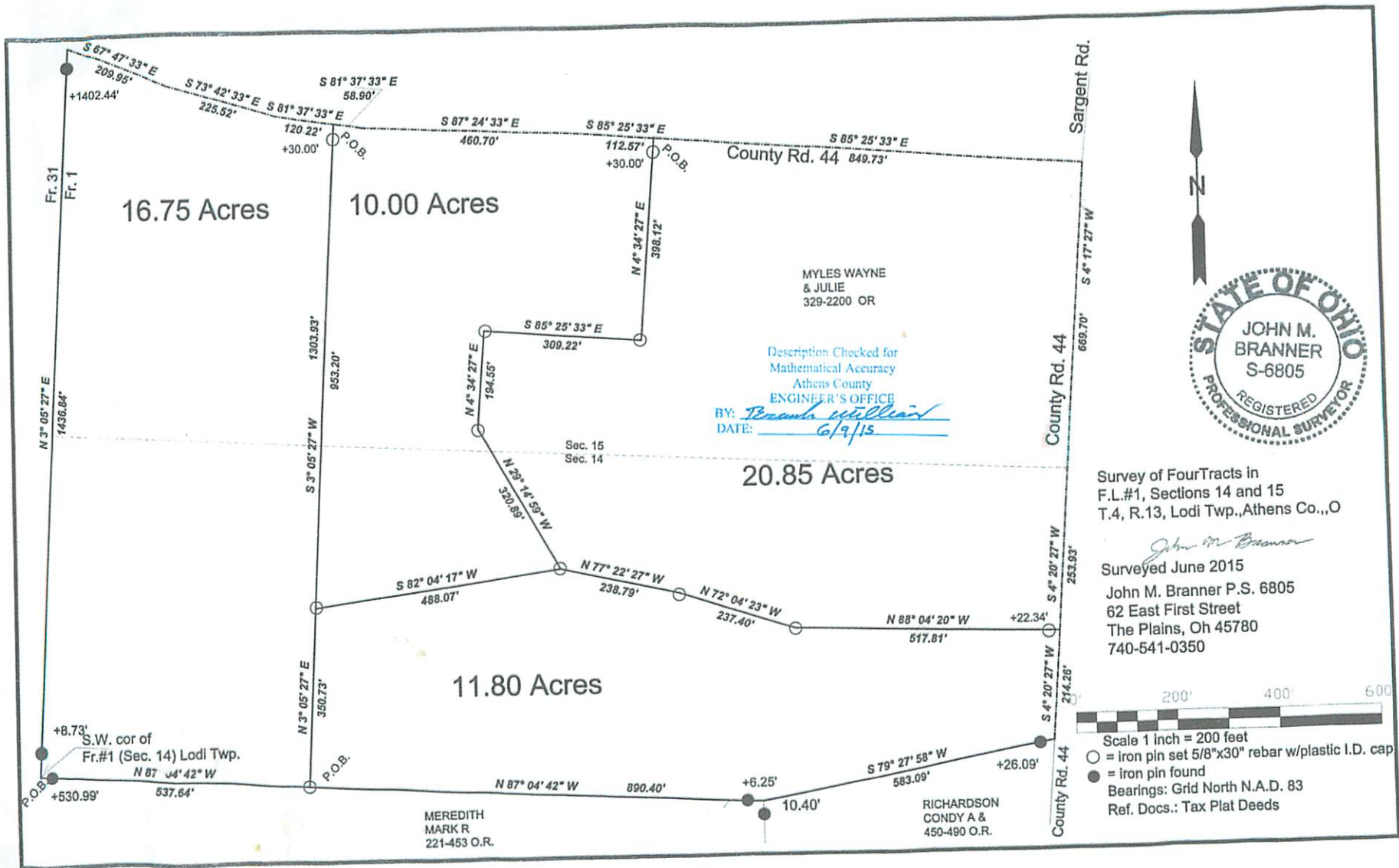
Bearing : Grid North- N.A.D. 83

The above description is based on a field survey completed June 2015 by

John M. Branner P.S. 6805

John M. Branner





Description Checked for
 Mathematical Accuracy
 Athens County
 ENGINEER'S OFFICE
 BY: *Branan Williams*
 DATE: *6/9/15*



Survey of Four Tracts in
 F.L.#1, Sections 14 and 15
 T.4, R.13, Lodi Twp., Athens Co., O

John M. Branner
 Surveyed June 2015
 John M. Branner P.S. 6805
 62 East First Street
 The Plains, Oh 45780
 740-541-0350



Scale 1 inch = 200 feet
 ○ = iron pin set 5/8"x30" rebar w/plastic I.D. cap
 ● = iron pin found
 Bearings: Grid North N.A.D. 83
 Ref. Docs.: Tax Plat Deeds