

Description Checked for
Mathematical Accuracy
Athens County
ENGINEER'S OFFICE
BY: Frank Williams
DATE: 12/27/16

Legal Description Pre-Approval
APPROVED
All transfers are subject to
Athens County Conveyance Standards

DEC 27 2016

DESCRIPTION OF A 5.14 Acre Tract Jill Thompson
Athens County Auditor

Situated in Section 16, T.4, R.13, Lodi Township, Athens County, Ohio and a part of the David L. Bircher Et.Al. Trustee Tract (517-1936 O.R.) and being more particularly described as follows:
Beginning at point in Sargent Road at the North-west corner of a 1.7929 acre tract (316-1817 O.R.), said point bears North 72 degrees 35 minutes 59 seconds West, 1873.71 feet (calculated) from the South-east corner of Section 16;
Thence,leaving said road and along the lines of the Remy 27 acre tract (518-1305 O.R.)
N 4° 44' 38" E, 76.06 feet to a point at the ledge of the rocks;
thence, along said ledge of rocks:
N 78° 36' 39" W, 262.06 feet;
N 64° 48' 16" W, 214.58 feet;
Thence, along the east-line of Dixie Gordon Neal (516-1412 O.R.);
N 8° 12' 48" E, 121.89 feet to an iron pin set;
Thence, along new lines created by this survey:
S 68° 59' 48" E, 520.91 feet to an iron pin set;
N 83° 52' 18" E, 236.84 feet to an iron pin set;
N 20° 06' 56" W, 372.65 feet to an iron pin set;
N 70° 03' 40" E, 117.55 feet to an iron pin set;
S 67° 03' 02" E, 110.85 feet to an iron pin set;
S 38° 10' 09" E, 191.47 feet to an iron pin set;
S 29° 54' 53" E, 122.87 feet to a point in Sargent Road, passing an iron pin set at 99.03 feet;
Thence, along Sargent Road:
S 30° 05' 04" W, 57.46 feet;
S 34° 05' 27" W,135.64 feet;
S 49° 14' 29" W,119.85 feet;
S 73° 26' 11" W, 130.35 feet;
S 87° 25' 52" W, 82.75 feet;
S 89° 45' 01" W, 34.27 feet;
N 85° 13' 59" W, 55.40 feet;
N 82° 19' 56" W, 66.34 feet to the point of beginning and containing 5.14 acres.



Subject to all easements and rights of way of record.
Iron pins set are 5/8 inch by 30 inch long rebar w/ plastic I.D. Cap stamped Branner P.S. 6805
Bearing : Grid North- N.A.D. 83
The above description is based on a field survey completed December 2016 by
John M. Branner P.S. 6805

John M. Branner

EXH A - 2 PAGES

Survey of a 5.14 Acre Tract
 Section 16, T. 4, R.13, Lodi Twp.
 Athens Co., OH
 Surveyed December 2016

By: *John M. Branner*
 John M. Branner P.S. 6805
 62 East First Street
 The Plains, Ohio 45780

Description Checked for
 Mathematical Accuracy
 Athens County
 ENGINEER'S OFFICE

BY: *Paul C. Sullivan*
 DATE: 12/27/16

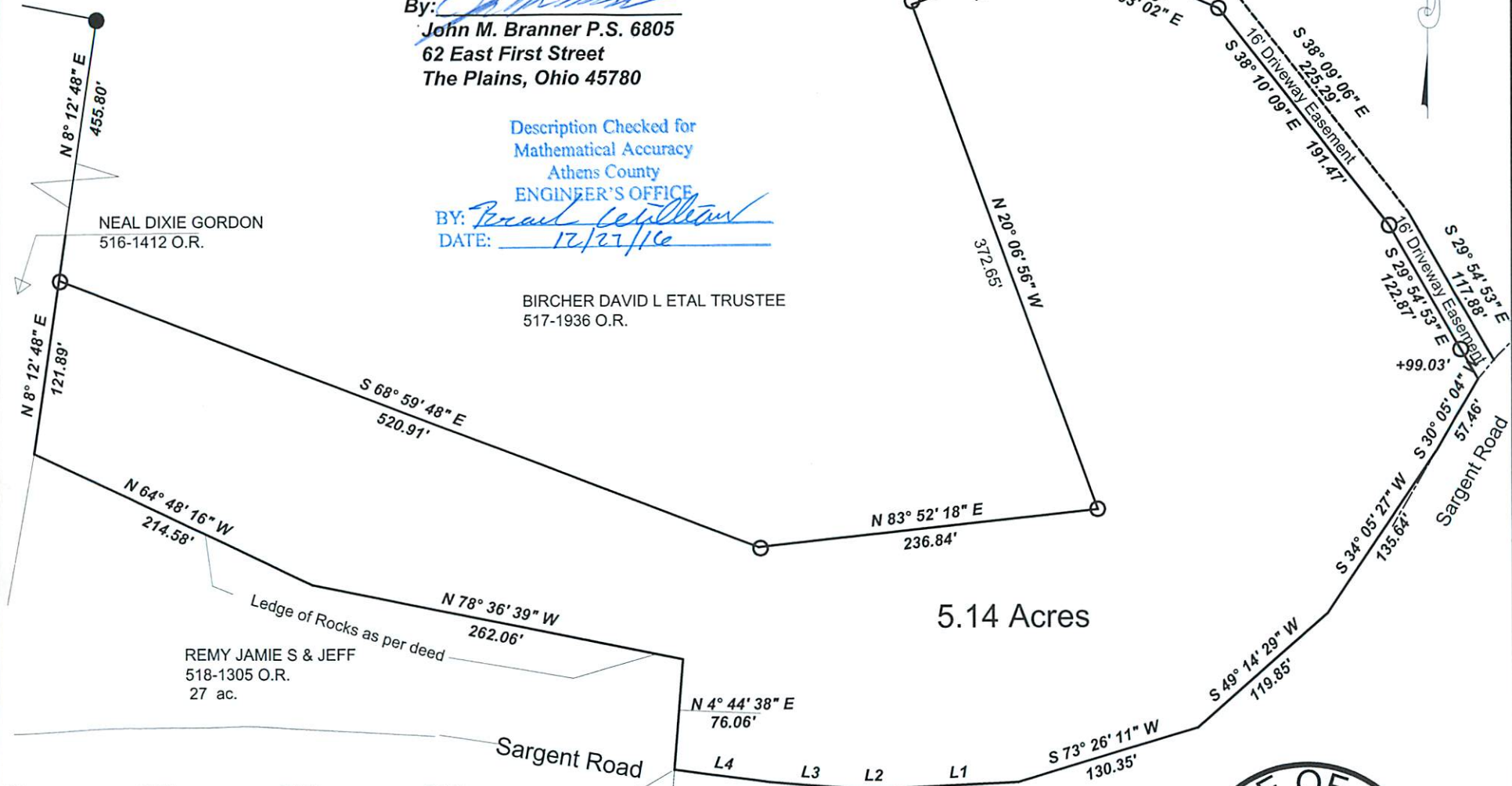
BIRCHER DAVID L ETAL TRUSTEE
 517-1936 O.R.

NEAL DIXIE GORDON
 516-1412 O.R.

REMY JAMIE S & JEFF
 518-1305 O.R.
 27 ac.

REMY JAMIE S & JEFF
 316-1817 O.R.
 1.7929 ac.

5.14 Acres



= Scale 1 inch = 100 feet
 ○ = iron pin set 5/8" x 30" long rebar w/ plastic I D cap
 ● = iron pin found
 Bearings: N.A.D. 83 Grid North
 Ref. Docs.: Tax Plat -Deeds

P.O.B. bears
 N 72° 35' 59" W
 1873.71' (calc.)
 from S.E. Cor of
 Sec. 16

Line	Bearing	Distance
1	S 87° 25' 52" W	82.75'
2	S 89° 45' 01" W	34.27'
3	N 85° 13' 59" W	55.40'
4	N 82° 19' 56" W	66.34'

