

**BRANNER SURVEYING
12500 N. PEACH RIDGE ROAD
ATHENS, OHIO 45701**

DESCRIPTION OF A 5.654 ACRE TRACT

Situated in Fraction 23, Section 22, T.4, R.13, Lodi Township, Athens County, Ohio and being more particularly described as follows:

Beginning at a point in the intersection ^{of} County road 25 and County Road 42, said point bears North 1013.41 feet and West, 1574.34 feet from the South-east corner of Fraction 23;

Thence, along County Road 25, North 53 degrees 57 minutes 03 seconds West, 50.07 feet to a point at the South-east corner of a 0.66 acre tract;

Thence, along the East-line of said tract, North 28 degrees 40 minutes 49 seconds East, 285.20 feet to a point in Shade creek, passing iron pins found at 16.85 feet and 253.44 feet;

Thence, along said creek South 67 degrees 18 minutes 36 seconds east, 266.93 feet to a point;

Thence, leaving said creek and along Grantor's existing property lines, North 00 degrees 26 minutes 05 seconds ~~West~~, 99.00 feet to an iron pin set;

Thence, North 89 degrees 33 minutes 55 seconds East, 165.00 feet to an iron pin set;

Thence, South 00. degrees 26 minutes 05 seconds East, 181.64 feet to a point in Shade Creek;

Thence, South 13 degrees 26 minutes 05 seconds East, 192.72 feet to a point in the creek;

Thence, South 41 degrees 26 minutes 05 seconds East, 313.50 feet to a point on the North side of County Road 42 where a railroad spike set bears South 41 degrees 26 minutes 05 seconds East, 10.50 feet;

Thence, South 39 degrees 38 minutes 08 seconds West, 22.07 feet to a point in County Road 42;

Thence, along said road, North 89 degrees 29 minutes 30 seconds west, 73.69 feet to a point;

Thence, North 75 degrees 07 minutes 19 seconds West, 166.26 feet to a point;

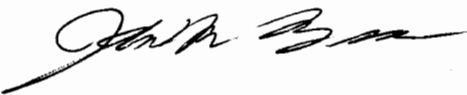
Thence, North 66 degrees 17 minutes 40 seconds West, 194.29 feet to a point;

Thence, North 59 degrees 45 minutes 56 seconds West, 136.80 feet to a point;

Thence, North 54 degrees 32 minutes 35 seconds West, 265.16 feet to the point of beginning and containing 5.654 acres.

Subject to all easements and rights of way of record.

The above description is based on field survey completed February 2002 by John M. Branner P.S. 6805



Description checked for
Mathematical Accuracy
ATHENS COUNTY
ENGINEER'S OFFICE
BY: S. Blauer
DATE: 2-5-02

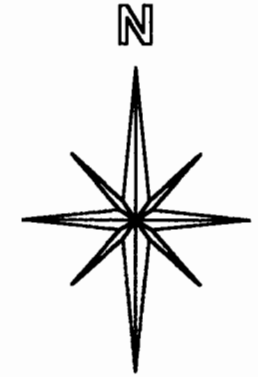


79

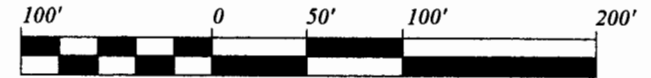
Lod #22

MICHAL L. HAMILTON ET.AL.
363-319
30.75 AC.

DELMAR D. &
RITA S.
WILLIAMS
166-349
0.66 AC.

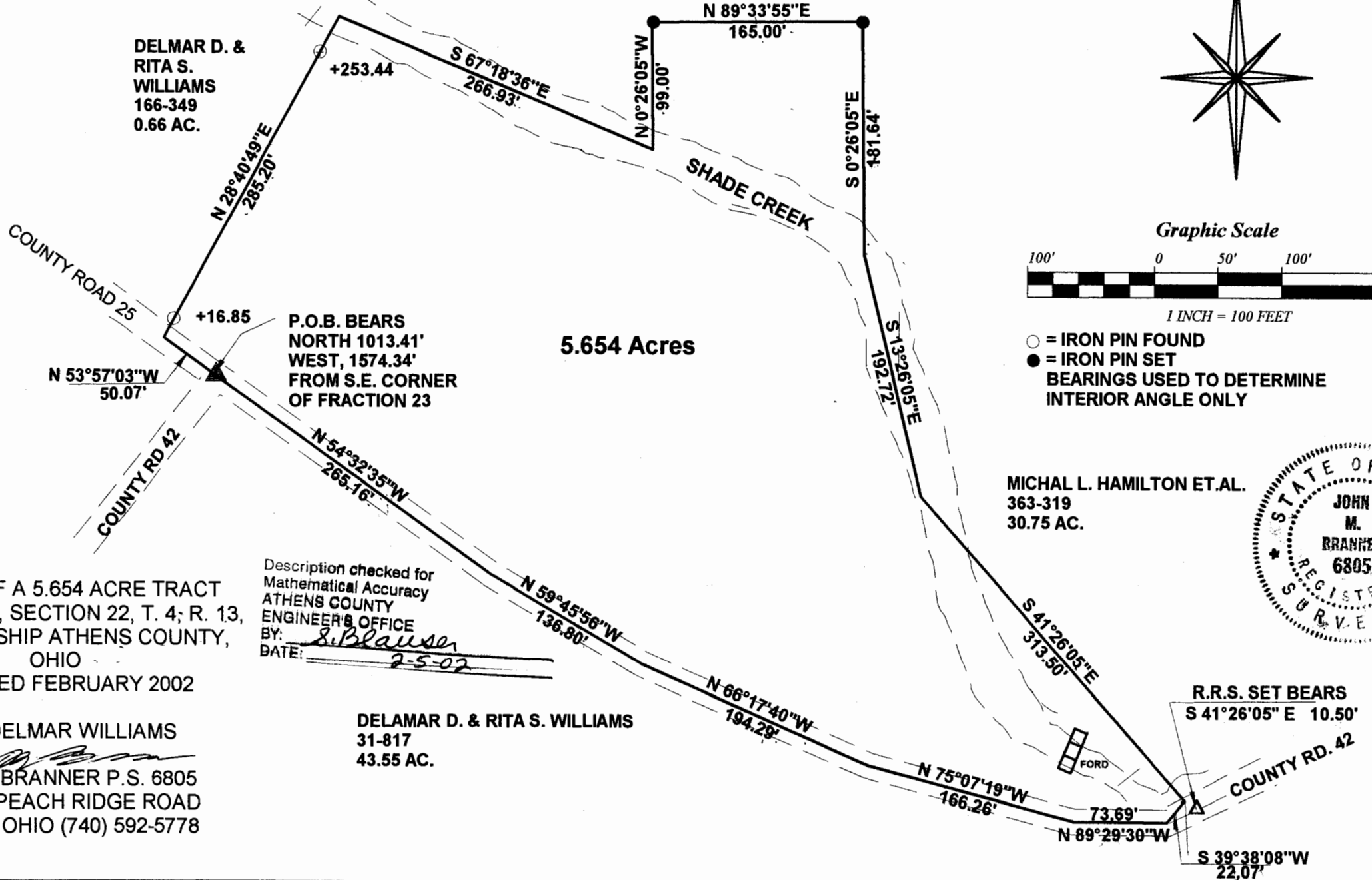


Graphic Scale



1 INCH = 100 FEET

- = IRON PIN FOUND
- = IRON PIN SET
- BEARINGS USED TO DETERMINE INTERIOR ANGLE ONLY



P.O.B. BEARS
NORTH 1013.41'
WEST, 1574.34'
FROM S.E. CORNER
OF FRACTION 23

MICHAL L. HAMILTON ET.AL.
363-319
30.75 AC.

Description checked for
Mathematical Accuracy
ATHENS COUNTY
ENGINEER'S OFFICE
BY: *S. Blausen*
DATE: *2-5-02*



SURVEY OF A 5.654 ACRE TRACT
FRACTION 23, SECTION 22, T. 4; R. 13,
LODI TOWNSHIP ATHENS COUNTY,
OHIO
SURVEYED FEBRUARY 2002

DELMAR D. & RITA S. WILLIAMS
31-817
43.55 AC.

FOR: DELMAR WILLIAMS
John M. Branner
JOHN M. BRANNER P.S. 6805
12500 N. PEACH RIDGE ROAD
ATHENS, OHIO (740) 592-5778

89

83