



C. Thomas Smith

Ohio Professional Surveyor No. 6844

P.O. Box 393

Racine, Ohio 45771

740-949-2524

Description of survey for Tom Moses

Being a part of tracts of land transferred to Richard and Glenna Grim as recorded in Official Records Volume 392 at page 785 Athens County Recorder's Office, Athens County, Ohio, also being a part of Sections 19 and 25, Township-4, Range-13, Lodi Township, Athens County, State of Ohio and more particularly described as follows;

Beginning at an existing iron pin being the southeast corner of the Northeast Quarter of said Section 25, Township-4, Range-13,

Thence along the north line of a tract transferred to Appalachian Investments LLC as recorded in Official Records Volume 467 at page 2027 South 90°00'00" West a distance of 1348.40 feet to an existing iron pin;

Thence leaving said north line and along the boundary of tracts transferred to Robert and Julie Wagner as recorded in Official Records Volume 192 at page 820 the following two courses;

1. South 89°55'06" West a distance of 1009.53 feet to a 5/8" iron pin set;
2. North 00°06'09" East a distance of 642.88 feet to an existing iron pin;

Thence leaving the boundary of said Wagner tract and along the boundary of a tract transferred to Jessica Wolfe as recorded in Official Records Volume 474 at page 1143 the following two courses;

1. South 89°56'30" East a distance of 1305.24 feet to an existing iron pin;
2. North 01°03'49" East passing thru existing iron pin at a distance of 297.73 feet and thru an existing iron pin being the northeast corner of said Wolfe tract at a distance of 843.79 feet and said Wolfe boundary and continuing a total distance of 931.11 feet to a point in the centerline of Township Road 68, Possum Hollow Road;

Thence along said centerline the following fourteen courses;

1. South 46°25'23" East a distance of 60.10 feet to a point;
2. South 48°22'10" East a distance of 123.63 feet to a point;
3. South 50°25'22" East a distance of 81.37 feet to a point;
4. South 55°46'52" East a distance of 76.40 feet to a point;
5. South 59°55'18" East a distance of 199.41 feet to a point;
6. South 59°01'14" East a distance of 197.11 feet to a point;
7. South 61°30'07" East a distance of 184.41 feet to a point;
8. South 47°12'45" East a distance of 108.72 feet to a point;
9. South 29°37'29" East a distance of 101.93 feet to a point;
10. South 21°12'08" East a distance of 192.72 feet to a point;
11. South 17°47'01" East a distance of 350.22 feet to a point;
12. South 14°24'25" East a distance of 86.43 feet to a point;
13. South 06°26'31" East a distance of 187.78 feet to a point;
14. South 12°50'57" East a distance of 120.40 feet to a point on the north line of a tract transferred to Kenneth Meeks as recorded in Official Records Volume 254 at page 1145;

Thence leaving said centerline and along the north line of said Meeks tract South 90°00'00" West passing thru a 5/8" iron pin set at a distance of 20.56 feet and going a total distance of 107.39 feet to the principal point of beginning containing 0.718 acres more or less in said Section 19 and 47.578 acres more or less in said Section 25 for a total of 48.296 acres more or less subject to an existing 12 foot right of way easement as recorded in Official Records Volume 451 at page 659 and to all legal easements and rights of way.

Bearings are assumed and are for the determination of angles only.

All iron pins set are 5/8"X30" rebar with plastic ID cap stamped "CTS-6844".

The above description was prepared from an actual survey made on the 13th day of October, 2012, by C. Thomas Smith, Ohio Professional Surveyor, No. 6844.



*C. Thomas Smith*  
Ohio Professional Surveyor No. 6844

Description Checked for  
Mathematical Accuracy  
Athens County  
ENGINEER'S OFFICE

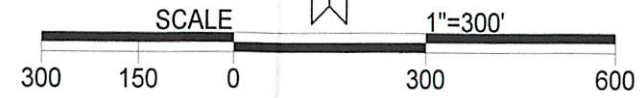
BY: *Bryan J. Matthews*  
DATE: 12/3/2013

BEING A PART OF SECTIONS 19 AND 25,  
TOWNSHIP-4, RANGE-13,  
LODI TOWNSHIP,  
ATHENS COUNTY, STATE OF OHIO

Note: Bearings are assumed and are for the determination of angles only.

All iron pins set are 5/8"X30" rebar with plastic ID cap stamped "CTS-6844".

Description Checked for  
Mathematical Accuracy  
Athens County  
ENGINEER'S OFFICE  
BY: Proctor  
DATE: 12/3/13

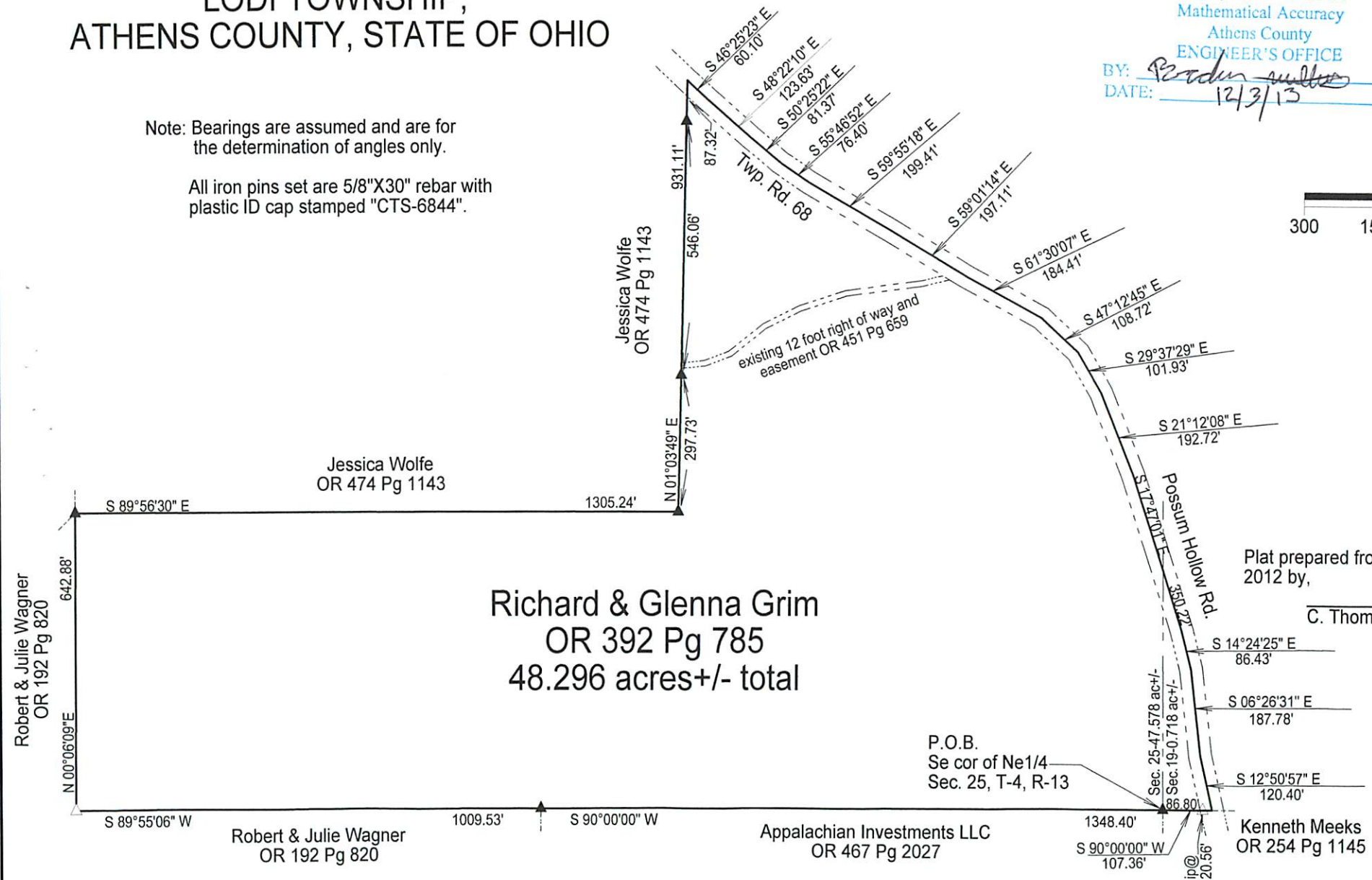


LEGEND

△	Iron pin set
▲	Iron pin found
•	Point

REFERENCES  
Current Tax Plats  
Previous surveys  
Deeds: as noted  
Aerial Photographs  
U.S.G.S. Topo Maps

Plat prepared from an actual survey made on the 13th day of October, 2012 by,  
C.T.S.  
C. Thomas Smith Ohio Professional Surveyor No. 6844



Surveyed and platted by  
C. Thomas Smith  
Ohio Professional Surveyor No 6844  
P.O. Box 393  
Racine, Ohio 45771  
740-949-2524