

DESCRIPTION OF A 75,806 ACRE TRACT

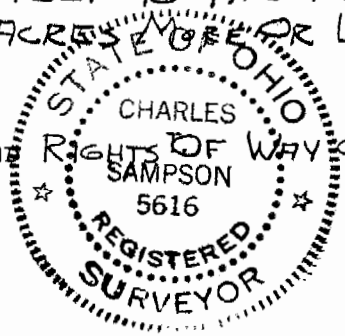
By: *Chris Cotton*
3-29-89

SITUATED IN FRACTION No. 32, SECTION 27, TOWNSHIP 13, LODI TOWNSHIP, ATHENS COUNTY OHIO IN THE OHIO RIVER SURVEY, AND BOUNDED AND DESCRIBED AS FOLLOWS:

BEGINNING AT A IRON PIN SET AT THE NORTHWEST CORNER OF SAID FRACTIONAL SECTION No. 32; THENCE ALONG THE NORTH LINE OF SAID FRACTION No. 32 SOUTH 84°18'36" EAST A TOTAL DISTANCE OF 1107.60 FEET TO A SPIKE SET IN THE CENTER OF U.S. ROUTE No. 33; THENCE ALONG THE CENTER OF SAID U.S. ROUTE No. 33 THE FOLLOWING COURSESES SOUTH 21°57'57" EAST A TOTAL DISTANCE OF 67.62 FEET TO A P.K. NAIL SET; THENCE WITH A CURVE TO THE RIGHT HAVING A (DELTA OF 9°00'00", TANGENT OF 112.73 FEET, RADIUS OF 1432.40 FEET) CHORD BEARING OF SOUTH 17°27'57" EAST AND A TOTAL CHORD DISTANCE OF 224.77 FEET TO A P.K. NAIL SET; THENCE SOUTH 12°57'57" EAST A TOTAL DISTANCE OF 554.55 FEET TO A P.K. NAIL SET; THENCE WITH A CURVE TO THE RIGHT HAVING A (DELTA OF 5°17'00", TANGENT OF 88.13 FEET, RADIUS OF 1910.09 FEET) CHORD BEARING OF SOUTH 10°19'27" EAST AND A TOTAL CHORD DISTANCE OF 176.07 FEET TO A P.K. NAIL SET; THENCE SOUTH 07°40'57" EAST A TOTAL DISTANCE OF 477.59 FEET TO A P.K. NAIL SET; THENCE WITH A CURVE TO THE LEFT HAVING A (DELTA OF 8°30'00", TANGENT OF 141.93 FEET, RADIUS OF 1909.90 FEET) CHORD BEARING OF SOUTH 11°55'57" EAST AND A TOTAL CHORD DISTANCE OF 283.08 FEET TO A P.K. NAIL SET; THENCE SOUTH 16°10'57" EAST A TOTAL DISTANCE OF 406.47 FEET TO A SPIKE SET; THENCE LEAVING SAID CENTER OF U.S. ROUTE No. 33 SOUTH 74°30'00" WEST A TOTAL DISTANCE OF 30.00 FEET TO THE WEST RIGHT OF WAY LINE OF SAID ROUTE 33; THENCE ALONG SAID RIGHT OF WAY LINE NORTH 16°10'57" WEST A TOTAL DISTANCE OF 16.00 FEET TO A IRON PIN SET ON THE NORTH LINE OF A CEMETERY LOT; THENCE LEAVING SAID RIGHT OF WAY LINE AND CONTINUING ALONG SAID CEMETERY LOT LINE THE FOLLOWING COURSESES SOUTH 75°15'00" WEST A TOTAL DISTANCE OF 162.00 FEET TO A IRON PIN; THENCE NORTH 37°59'06" WEST A TOTAL DISTANCE OF 119.20 FEET TO A IRON PIN; THENCE NORTH 62°15'00" WEST A TOTAL DISTANCE OF 238.00 FEET TO A IRON PIN; THENCE NORTH 20°36'57" WEST A TOTAL DISTANCE OF 70.00 FEET TO A IRON PIN; THENCE SOUTH 69°03'11" WEST A TOTAL DISTANCE OF 280.52 FEET TO A CORNER POST; THENCE SOUTH 19°13'41" EAST A TOTAL DISTANCE OF 172.36 FEET TO A CORNER POST; THENCE NORTH 69°11'51" EAST A TOTAL DISTANCE OF 284.69 FEET TO A IRON PIN SET; THENCE NORTH 20°36'57" WEST A TOTAL DISTANCE OF 85.00 FEET TO A IRON PIN; THENCE SOUTH 62°15'00" EAST A TOTAL DISTANCE OF 238.00 FEET TO A IRON PIN SET; THENCE SOUTH 37°42'22" EAST A TOTAL DISTANCE OF 116.88 FEET TO A IRON PIN SET; THENCE NORTH 75°15'00" EAST A TOTAL DISTANCE OF 162.00 FEET TO THE SOUTH PROPERTY LINE AT THE WEST RIGHT OF WAY LINE OF U.S. ROUTE No. 33; THENCE LEAVING SAID CEMETERY LOT AND CONTINUING ALONG THE SOUTH PROPERTY LINE SOUTH 74°30'00" WEST (PASSING THROUGH A IRON PIN FOUND AT 6.70 FEET) FOR A TOTAL DISTANCE OF 503.55 FEET TO A IRON PIN FOUND THENCE NORTH 84°48'33" WEST (PASSING THROUGH A IRON PIN FOUND AT 1261.19 FEET) FOR A TOTAL DISTANCE OF 1321.11 FEET TO A IRON PIN FOUND AT THE SOUTHWEST PROPERTY CORNER AND ON THE WEST LINE OF SAID FRACTIONAL SECTION No. 32; THENCE ALONG SAID WEST FRACTION LINE AND THE WEST PROPERTY LINE NORTH 06°08'00" EAST A TOTAL DISTANCE OF 2277.29 FEET TO THE PLACE OF BEGINNING CONTAINING 75,806 ACRES MORE OR LESS

SUBJECT TO ALL LEGAL EASEMENTS AND RIGHTS OF WAY OF RECORD

Charles T. Sampson



LOD # 32

42,381 50 SHEETS 5 SQUARE
42,382 100 SHEETS 5 SQUARE
42,383 200 SHEETS 5 SQUARE

42,381 50 SHEETS 5 SQUARE
42,382 100 SHEETS 5 SQUARE
42,383 200 SHEETS 5 SQUARE

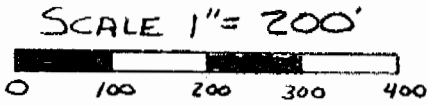




LEGEND

- = SQUARE I.P. FOUND
- = I.P. SET
- ⊙ = I. PIPE FOUND
- = P.K. NAIL SET OR SPIKE

Charles T. Sampson



DATE 3-3-1989

CHARLES POWELL

24.69 AC.
295-504

I.P. SET
AT
CORNER FENCE POST

S 84° 18' 36" E 1107.60'

NORTH LINE OF FRACTION No. 32
N.W. CORNER
FRACTION No. 32

S 21° 57' 57" E
67.62'

JOHN BLAZIER Vol. 252 P. 247
146.52 AC.

N 06° 08' 00" E 2277.29'
WEST LINE OF FRACTION No. 32

CURVE No. 41
Δ RT. = 9° 00' 00"
T = 112.73'
L = 225.00'
CH. = 224.77'
R = 1432.40'

CHORD S 17° 27' 57" E
224.77'

DEWEY F. KING et. al.

347-839, 218-38, 366-757

127.02 AC. TOTAL

U.S. RT. No. 32

CHORD S 10° 19' 27" E
176.07'

SURVEY PLAT FOR

DEWEY F. KING

SURVEYED ACRES = 75.806

CURVE No. 42
Δ RT. = 5° 17' 00"
T = 88.13'
L = 176.11'
CH. = 176.07'
R = 1910.09'

SITUATED IN FRACTION No. 32 SECTION No. 27
TOWN 4, RANGE 13, LODI TOWNSHIP,
ATHENS COUNTY, OHIO

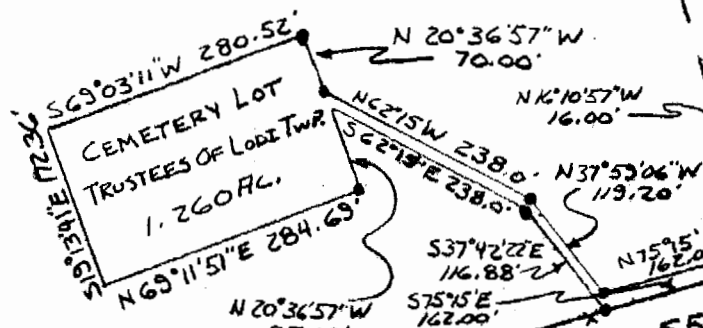
60' RM LINE
60' GRAV LINE

S 07° 40' 57" E 477.59'

CURVE No. 43

Δ LT. = 8° 30' 00"
T = 141.93'
L = 283.33'
CH. = 283.08'
R = 1909.90'

CHORD
S 11° 55' 57" E
283.08'



S 59.92'

1261.19'
N 84° 48' 33" W 1321.11'

I. PIPE FOUND

S 74° 30' 00" W 533.55'

I PIN FOUND

I.P. FOUND
+ 36.70'

ROBERT BOBO
34.77 AC.
185-210

2