



SOUTHEASTERN LAND SURVEYS

LEONARD F. SWOYER
REGISTERED PROFESSIONAL LAND SURVEYOR

3428 Pleasant Hill Road
Athens, Ohio 45701
740/593-8701

TRACT 1

Situated in Section 4, Lodi Township, Town 4, Range 13, Athens County, Ohio and described as follows:

Commencing at the southwest corner of Section 3 of Lodi Township; thence on an assumed bearing North 00 Degrees 43 Minutes 53 Seconds East, passing a cross-notched stone* at 2032.80 feet and a set iron pin* at 2155.80 feet, for a total distance of 3374.76 feet to a stone* on the grantor's westerly line and east line of a 110.70 acre tract described in Volume 368 Page 227 of the Athens County Deed Records; thence along the grantor's westerly line and the east line of said 110.70 acre tract the following four bearings and distances: 1) North 20 Degrees 09 Minutes 11 Seconds West a distance of 354.47 feet to a stone*; thence 2) North 44 Degrees 16 Minutes 22 Seconds West a distance of 314.40 feet to a stone*; thence 3) North 33 Degrees 01 Minutes 22 Seconds West a distance of 198.00 feet to a set iron pin*; thence 4) North 18 Degrees 31 Minutes 22 Seconds West a distance of 363.00 feet to a set iron pin* at the northeast corner of said 110.70 acre tract; thence along the northerly projection of the north line of said 110.70 acre tract North 67 Degrees 13 Minutes 38 Seconds East, passing set iron pins at 635.13 feet, and 674.49 feet for a total distance of 1250.21 feet to a set iron pin; thence North 01 Degrees 10 Minutes 10 Seconds East a distance of 360.77 feet to a set iron pin, THE TRUE POINT OF BEGINNING; thence North 01 Degrees 10 Minutes 10 Seconds East a distance of 976.80 feet to a set iron pin* on the grantor's north line on the south line of a 64.50 acre tract described in Volume 57 Page 785 of the Athens County Official Deed Records; thence along the grantor's north line and the south line of said 64.50 acre tract and the south line of a 12.00 acre tract described in Volume 342 Page 389 of the Athens County Deed Records South 89 Degrees 03 Minutes 58 Seconds East a distance of 1909.43 feet to railroad spike set* in Athens County Road 47 at the grantor's northeast corner at the southeast corner of said 12.00 acre tract; thence along the grantor's east line and said road the following ten bearings and distances: 1) South 35 Degrees 21 Minutes 44 Seconds East a distance of 69.07 feet to a point; thence 2) South 29 Degrees 57 Minutes 56 Seconds East a distance of 150.84 feet to a point; thence 3) South 27 Degrees 36 Minutes 22 Seconds East a distance of 149.98 feet to a point; thence 4) South 24 Degrees 54 Minutes 51 Seconds East a distance of 141.52 feet to a point; thence 5) South 20 Degrees 56 Minutes 41 Seconds East a distance of 121.74 feet to a point; thence 6) South 17 Degrees 15 Minutes 20 Seconds East a distance of 135.86 feet to a point; thence 7) South 15 Degrees 31 Minutes 30 Seconds East a distance of 98.75 feet to a point; thence 8) South 16 Degrees 00 Minutes 34 Seconds East a distance of 70.01 feet to a point; thence 9) South 11 Degrees 33 Minutes 35 Seconds East a distance of 108.58 feet to a point; thence 10) South 05 Degrees 03 Minutes 37 Seconds East a distance of 36.69 feet to a point; thence leaving the grantor's east line and leaving said road North 88 Degrees 43 Minutes 51 Seconds West, passing a set iron pins at 17.30 and 1231.84 feet, for a total distance of 2328.67 feet to the POINT OF BEGINNING and containing 48.794 acres and being a part of a 303.990 acre tract described in Volume 299 Page 1546 of the Athens County Official Deed Records.

*Denotes calculated location of monument based on a previous survey.

Note: Unless otherwise noted, all set iron pins are 5/8 inch diameter rebar and 30 inches in length and capped with a plastic identification marker inscribed " L.F. SWOYER PS 6765. "

The above description was prepared under the supervision of Leonard F. Swoyer Registered Professional Land Surveyor No. 6765 and based on a survey performed by Southeastern Land Surveys dated September 15, 2003.

Subject to all easements and right of ways of record.

Description checked for
Mathematical Accuracy
ATHENS COUNTY
ENGINEER'S OFFICE

BY: S. Blausen
DATE: 9-23-03

PROPERTY

CONSTRUCTION

SUBDIVISIONS

Lodi #3 & #4



SOUTHEASTERN LAND SURVEYS

LEONARD R. SWOYER
REGISTERED PROFESSIONAL LAND SURVEYOR

3428 Pleasant Hill Road
Athens, Ohio 45701
740/593-8701

TRACT 2

Situated in Section 3, Lodi Township, Town 4, Range 13, Athens County, Ohio and described as follows:

Commencing at the southwest corner of Section 3 of Lodi Township; thence on an assumed bearing North 00 Degrees 43 Minutes 53 Seconds East, passing a cross-notched stone* at 2032.80 feet and a set iron pin* at 2155.80 feet, for a total distance of 3374.76 feet to a stone* on the grantor's westerly line and east line of a 110.70 acre tract described in Volume 368 Page 227 of the Athens County Deed Records; thence along the grantor's westerly line and east line of said 110.70 acre tract the following four bearings and distances: 1) North 20 Degrees 09 Minutes 11 Seconds West a distance of 354.47 feet to a stone*; thence 2) North 44 Degrees 16 Minutes 22 Seconds West a distance of 314.40 feet to a stone*; thence 3) North 33 Degrees 01 Minutes 22 Seconds West a distance of 198.00 feet to a set iron pin*; thence 4) North 18 Degrees 31 Minutes 22 Seconds West a distance of 363.00 feet to a set iron pin* at the northeast corner of said 110.70 acre tract; thence along the northerly projection of the north line of said 110.70 acre tract North 67 Degrees 13 Minutes 38 Seconds East, passing set iron pins at 635.13 feet, and 674.49 feet for a total distance of 1250.21 feet to a set iron pin; thence North 01 Degrees 10 Minutes 10 Seconds East a distance of 360.77 feet to a set iron pin; thence South 88 Degrees 43 Minutes 51 Seconds East a distance of 1072.89 feet to a point in an existing creek bed, THE TRUE POINT OF BEGINNING; thence South 88 Degrees 43 Minutes 51 Seconds East, passing set iron pins at 23.94 feet and 1238.48 feet, for a total distance of 1255.77 feet to a point in Athens County Road 47; thence along said road the following two bearings and distances: 1) South 05 Degrees 03 Minutes 37 Seconds East a distance of 331.68 feet to a point; thence 2) South 00 Degrees 42 Minutes 09 Seconds East a distance of 143.55 feet to a point; thence leaving said road South 81 Degrees 47 Minutes 13 Seconds West a distance of 8.14 feet to drill hole set on top of the west concrete wall of a bridge; thence along an existing creek bed the following seventeen bearings and distances:

- 1) North 80 Degrees 01 Minutes 59 Seconds West a distance of 22.19 feet a point; thence
- 2) North 60 Degrees 12 Minutes 10 Seconds West a distance of 33.79 feet a point; thence
- 3) South 84 Degrees 36 Minutes 44 Seconds West a distance of 60.99 feet a point; thence
- 4) North 64 Degrees 49 Minutes 09 Seconds West a distance of 92.14 feet a point; thence
- 5) North 79 Degrees 44 Minutes 06 Seconds West a distance of 50.64 feet a point; thence
- 6) North 62 Degrees 42 Minutes 21 Seconds West a distance of 60.62 feet a point; thence
- 7) North 76 Degrees 48 Minutes 36 Seconds West a distance of 121.87 feet a point; thence
- 8) North 66 Degrees 02 Minutes 27 Seconds West a distance of 142.87 feet a point; thence
- 9) North 71 Degrees 19 Minutes 14 Seconds West a distance of 83.08 feet a point; thence
- 10) South 25 Degrees 50 Minutes 32 Seconds West a distance of 36.39 feet a point; thence
- 11) North 87 Degrees 03 Minutes 06 Seconds West a distance of 119.09 feet a point; thence
- 12) North 88 Degrees 49 Minutes 03 Seconds West a distance of 226.19 feet a point; thence
- 13) North 67 Degrees 07 Minutes 27 Seconds West a distance of 127.28 feet a point; thence
- 14) North 45 Degrees 25 Minutes 30 Seconds West a distance of 102.86 feet a point; thence
- 15) North 26 Degrees 27 Minutes 47 Seconds West a distance of 72.42 feet a point; thence
- 16) North 28 Degrees 43 Minutes 01 Seconds West a distance of 111.22 feet a point; thence
- 17) North 20 Degrees 56 Minutes 42 Seconds West a distance of 40.11 feet to the POINT OF BEGINNING and containing 9.575 acres and being a part of a 303.990 acre tract described in Volume 299 Page 1546 of the Athens County Official Deed Records.

*Denotes calculated location of monument based on a previous survey.

Note: Unless otherwise noted, all set iron pins are 5/8 inch diameter rebar and 30 inches in length and capped with a plastic identification marker inscribed " L.F. SWOYER PS 6765."

The above description was prepared under the supervision of Leonard F. Swoyer Registered Professional Land Surveyor No. 6765 and based on a survey performed by Southeastern Land Surveys dated September 15, 2003.

Subject to all easements and right of ways of record.

Description checked for
Mathematical Accuracy
ATHENS COUNTY
ENGINEER'S OFFICE
BY: S. Blouse
DATE: 9-23-03

PROPERTY

CONSTRUCTION

SUBDIVISIONS



SOUTHEASTERN LAND SURVEYS

LEONARD R. SWOYER
REGISTERED PROFESSIONAL LAND SURVEYOR

3428 Pleasant Hill Road
Athens, Ohio 45701
740/593-8701

TRACT 3

Situated in Section 3, Lodi Township, Town 4, Range 13, Athens County, Ohio and described as follows:

Commencing at the southwest corner of Section 3 of Lodi Township; thence on an assumed bearing North 00 Degrees 43 Minutes 53 Seconds East, passing a cross-notched stone* at 2032.80 feet and a set iron pin* at 2155.80 feet, for a total distance of 3374.76 feet to a stone* on the grantor's westerly line and east line of a 110.70 acre tract described in Volume 368 Page 227 of the Athens County Deed Records; thence along the grantor's westerly line and east line of said 110.70 acre tract the following four bearings and distances: 1) North 20 Degrees 09 Minutes 11 Seconds West a distance of 354.47 feet to a stone; thence 2) North 44 Degrees 16 Minutes 22 Seconds West a distance of 314.40 feet to a stone; thence 3) North 33 Degrees 01 Minutes 22 Seconds West a distance of 198.00 feet to a set iron pin*; thence 4) North 18 Degrees 31 Minutes 22 Seconds West a distance of 363.00 feet to a set iron pin* at the northeast corner of said 110.70 acre tract; thence along the northerly projection of the north line of said 110.70 acre tract North 67 Degrees 13 Minutes 38 Seconds East, passing a set iron pin at 635.13 feet, for a total distance of 658.19 feet to a point, THE TRUE POINT OF BEGINNING; thence North 67 Degrees 13 Minutes 38 Seconds East, passing a set iron pin at 16.30 feet, for a total distance of 592.02 feet to an iron pin set; thence North 01 Degrees 10 Minutes 10 Seconds East a distance of 360.77 feet to a set iron pin; thence South 88 Degrees 43 Minutes 51 Seconds East a distance of 1072.89 feet to a point in an existing creek bed, witnessed by a set iron pin which bears South 88 Degrees 43 Minutes 51 Seconds East a distance of 23.94 feet; thence along said creek bed the following seventeen bearings and distances: 1) South 20 Degrees 56 Minutes 42 Seconds East a distance of 40.11 feet to a point; thence 2) South 28 Degrees 43 Minutes 01 Seconds East a distance of 111.22 feet to a point; thence 3) South 26 Degrees 27 Minutes 47 Seconds East a distance of 72.42 feet to a point; thence 4) South 45 Degrees 25 Minutes 30 Seconds East a distance of 102.86 feet to a point; thence 5) South 67 Degrees 07 Minutes 27 Seconds East a distance of 127.28 feet to a point; thence 6) South 88 Degrees 49 Minutes 03 Seconds East a distance of 226.19 feet to a point; thence 7) South 87 Degrees 03 Minutes 06 Seconds East a distance of 119.09 feet to a point; thence 8) North 25 Degrees 50 Minutes 32 Seconds East a distance of 36.39 feet to a point; thence 9) South 71 Degrees 19 Minutes 14 Seconds East a distance of 83.08 feet to a point; thence 10) South 66 Degrees 02 Minutes 27 Seconds East a distance of 142.87 feet to a point; thence 11) South 76 Degrees 48 Minutes 36 Seconds East a distance of 121.87 feet to a point; thence 12) South 62 Degrees 42 Minutes 21 Seconds East a distance of 60.62 feet to a point; thence 13) South 79 Degrees 44 Minutes 06 Seconds East a distance of 50.64 feet to a point; thence 14) South 64 Degrees 49 Minutes 09 Seconds East a distance of 92.14 feet to a point; thence 15) North 84 Degrees 36 Minutes 44 Seconds East a distance of 60.99 feet to a point; thence 16) South 60 Degrees 12 Minutes 10 Seconds East a distance of 33.79 feet to a point; thence 17) South 80 Degrees 01 Minutes 59 Seconds East a distance of 22.19 feet to a drill hole set on the top of the west wall of a bridge; thence North 81 Degrees 47 Minutes 13 Seconds East a distance of 8.14 feet to a point in Athens County Road 47; thence along said road the following ten bearings and distances: 1) South 09 Degrees 11 Minutes 33 Seconds West a distance of 161.85 feet to a point; thence 2) South 17 Degrees 48 Minutes 20 Seconds West a distance of 162.42 feet to a point; thence 3) South 21 Degrees 40 Minutes 05 Seconds West a distance of 285.44 feet to a point; thence 4) South 23 Degrees 15 Minutes 27 Seconds West a distance of 126.64 feet to a point; thence 5) South 25 Degrees 50 Minutes 15 Seconds West a distance of 160.63 feet to a point; thence 6) South 27 Degrees 07 Minutes 53 Seconds West a distance of 254.68 feet to a point; thence 7) South 24 Degrees 13 Minutes 28 Seconds West a distance of 143.14 feet to a point; thence 8) South 18 Degrees 49 Minutes 03 Seconds West a distance of 83.21 feet to a point; thence 9) South 14 Degrees 51 Minutes 19 Seconds West a distance of 176.74 feet to a point; thence 10) South 04 Degrees 26 Minutes 00 Seconds West a distance of 162.63 feet to a point at the intersection of said Athens County Road 47 with Athens County Road 75; thence along said Athens County Road 75 the following 25 bearings and distances: 1) South 68 Degrees 46 Minutes 45 Seconds West a distance of 53.02 feet to a point; thence 2) South 79 Degrees 58 Minutes 01 Seconds West a distance of 54.21 feet to a point; thence 3) South 88 Degrees 29 Minutes 10 Seconds West a distance of 74.08 feet to a point; thence 4) North 84 Degrees 24 Minutes 33 Seconds West a distance of 68.68 feet to a point; thence 5) North 72 Degrees 06 Minutes 44 Seconds West a distance of 64.08 feet to a point; thence 6) North 59 Degrees 59 Minutes 14 Seconds West a distance of 70.31 feet to a point; thence 7) North 47 Degrees 55 Minutes 08 Seconds West a distance of 78.41 feet to a point; thence 8) North 39 Degrees 23 Minutes 09 Seconds West a distance of 103.78 feet to a point; thence 9) North 39 Degrees 49 Minutes 32 Seconds West

PROPERTY

CONSTRUCTION

Description checked for
Mathematical Accuracy
ATHENS COUNTY
ENGINEER'S OFFICE
BY: J. Blawie
DATE: 9-23-03

SUBDIVISIONS



SOUTHEASTERN LAND SURVEYS

LEONARD F. SWOYER
REGISTERED PROFESSIONAL LAND SURVEYOR

3428 Pleasant Hill Road
Athens, Ohio 45701
740/593-8701

a distance of 125.78 feet to a point; thence 10) North 53 Degrees 04 Minutes 01 Seconds West a distance of 64.87 feet to a point; thence 11) North 64 Degrees 19 Minutes 59 Seconds West a distance of 71.63 feet to a point; thence 12) North 75 Degrees 17 Minutes 47 Seconds West a distance of 110.22 feet to a point; thence 13) North 76 Degrees 56 Minutes 13 Seconds West a distance of 108.50 feet to a point; thence 14) North 73 Degrees 01 Minutes 28 Seconds West a distance of 95.71 feet to a point; thence 15) North 68 Degrees 43 Minutes 40 Seconds West a distance of 50.15 feet to a point; thence 16) North 64 Degrees 03 Minutes 30 Seconds West a distance of 112.24 feet to a point; thence 17) North 62 Degrees 14 Minutes 58 Seconds West a distance of 155.00 feet to a point; thence 18) North 60 Degrees 10 Minutes 03 Seconds West a distance of 89.12 feet; thence 19) North 54 Degrees 22 Minutes 08 Seconds West a distance of 90.24 feet to a point; thence 20) North 47 Degrees 53 Minutes 33 Seconds West a distance of 154.38 feet to a point; thence 21) North 45 Degrees 49 Minutes 03 Seconds West a distance of 251.22 feet to a point; thence 22) North 45 Degrees 44 Minutes 06 Seconds West a distance of 257.86 feet to a point; thence 23) North 45 Degrees 49 Minutes 20 Seconds West a distance of 296.74 feet to a point; thence 24) North 45 Degrees 04 Minutes 26 Seconds West a distance of 268.29 feet to a point; thence 25) North 44 Degrees 21 Minutes 07 Seconds West a distance of 60.44 feet to the POINT OF BEGINNING and containing 82.777 acres and being part of a 303.990 acre tract described in Volume 299 Page 1546 of the Athens County Official Deed Records.

*Denotes calculated location of monument based on a previous survey.

Note: Unless otherwise noted, all set iron pins are 5/8 inch diameter rebar and 30 inches in length and capped with a plastic identification marker inscribed " L.F. SWOYER PS 6765."

The above description was prepared under the supervision of Leonard F. Swoyer Registered Professional Land Surveyor No. 6765 and based on a survey performed by Southeastern Land Surveys dated September 15, 2003.

Subject to all easements and right of ways of record.



SOUTHEASTERN LAND SURVEYS

LEONARD F. SWOYER
REGISTERED PROFESSIONAL LAND SURVEYOR

3428 Pleasant Hill Road
Athens, Ohio 45701
740/593-8701

TRACT 4

Situated in Section 3 and Fractions 3 and 12 of Section 9, Lodi Township, Town 4, Range 13, Athens County, Ohio and described as follows:

Commencing at the southwest corner of Section 3 of Lodi Township; thence on an assumed bearing North 00 Degrees 43 Minutes 53 Seconds East, passing a cross-notched stone* at 2032.80 feet for a total distance of 2155.80 feet to a set iron pin* at the grantor's southeast corner on the east line of a 110.70 acre tract described in Volume 368 Page 227 of the Athens County Deed Records at the northwest corner of a 151.76 acre tract described in Volume 268 Page 613 of the Athens County Deed Records, THE TRUE POINT OF BEGINNING; thence along the grantor's west line and the east line of said 110.70 acre tract the following five bearings and distances: 1) North 00 Degrees 43 Minutes 53 Seconds East a distance of 1218.96 feet to a found stone*; thence 2) North 20 Degrees 09 Minutes 11 Seconds West a distance of 354.47 feet to a found stone*; thence 3) North 44 Degrees 16 Minutes 22 Seconds West a distance of 314.40 feet to a found stone*; thence 4) North 33 Degrees 01 Minutes 22 Seconds West a distance of 198.00 feet to a set iron pin*; thence 5) North 18 Degrees 31 Minutes 22 Seconds West a distance of 363.00 feet to a set iron pin* at the northeast corner of said 110.70 acre tract; thence along the northeasterly prolongation of the north line of said 110.70 acre tract North 67 Degrees 13 Minutes 38 Seconds East, passing a set iron pin at 635.13 feet, for a total distance of 658.19 feet to a point in Athens County Road 75; thence along said road the following seven bearings and distances: 1) South 44 Degrees 21 Minutes 07 Seconds East a distance of 60.44 feet to a point; thence 2) South 45 Degrees 04 Minutes 26 Seconds East a distance of 268.29 feet to a point; thence 3) South 45 Degrees 49 Minutes 20 Seconds East a distance of 296.74 feet to a point; thence 4) South 45 Degrees 44 Minutes 06 Seconds East a distance of 257.86 feet to a point; thence 5) South 45 Degrees 49 Minutes 03 Seconds East a distance of 251.22 feet to a point; thence 6) South 47 Degrees 53 Minutes 33 Seconds East a distance of 154.38 feet to a point; thence 7) South 54 Degrees 22 Minutes 08 Seconds East a distance of 90.24 feet to a point; thence leaving said road South 00 Degrees 18 Minutes 08 Seconds West, passing a set iron pin at 24.12 feet, for a total distance of 1652.52 feet to a set iron pin* on the grantor's south line, the north line of aforesaid 151.76 acre tract described in Volume 268 Page 613 of the Athens County Deed Records; thence along the grantor's south line and the north line of said 151.76 acre tract (see Boundary Agreement Recorded in Volume 324 Page 1 of the Athens County Official Deed Records) the following two bearings and distances: 1) North 89 Degrees 18 Minutes 54 Seconds West a distance of 223.74 feet to a set iron pin*; thence 2) North 85 Degrees 55 Minutes 03 Seconds West a distance of 825.00 feet to the POINT OF BEGINNING and containing 59.093 acres and being a part of 303.990 acre tract described in Volume 299 Page 1546 of the Athens County Official Deed Records. There are 50.16 acres in Section 3, 3.081 acres in Fraction 3 Section 9, and 5.996 acres in Fraction 12 of Section 9.

*Denotes calculated location of monument based on a previous survey.

Note: Unless otherwise noted, all set iron pins are 5/8 inch diameter rebar and 30 inches in length and capped with a plastic identification marker inscribed " L.F. SWOYER PS 6765."

The above description was prepared under the supervision of Leonard F. Swoyer Registered Professional Land Surveyor No. 6765 and based on a survey performed by Southeastern Land Surveys dated September 15, 2003.

Subject to all easements and right of ways of record.

Description checked for
Mathematical Accuracy
ATHENS COUNTY
ENGINEER'S OFFICE

BY:

DATE:

S. Blawie
9-23-03

PROPERTY

CONSTRUCTION

SUBDIVISIONS



SOUTHEASTERN LAND SURVEYS

LEONARD F. SWOYER
REGISTERED PROFESSIONAL LAND SURVEYOR

3428 Pleasant Hill Road
Athens, Ohio 45701
740/593-8701

TRACT 5

Situated in Section 3, Lodi Township, Town 4, Range 13, Athens County, Ohio and described as follows:

Commencing at the southwest corner of Section 3 of Lodi Township; thence on an assumed bearing North 00 Degrees 43 Minutes 53 Seconds East, passing a cross-notched stone* at 2032.80 feet for a total distance of 2155.80 feet to a set iron pin* at the grantor's southwest corner on the east line of a 110.70 acre tract described in Volume 368 Page 227 of the Athens County Deed Records at the northwest corner of a 151.76 acre tract described in Volume 268 Page 613 of the Athens County Deed Records; thence along the grantor's south line and the north line of said 151.76 acre tract (see Boundary Agreement in Volume 324 Page 1 of the Athens County Official Deed Records) the following two bearings and distances: 1) South 85 Degrees 55 Minutes 03 Seconds East a distance of 825.00 feet to a set iron pin*; thence 2) South 89 Degrees 18 Minutes 54 Seconds East a distance of 223.74 feet to a set iron pin* THE TRUE POINT OF BEGINNING; thence along a new line North 00 Degrees 18 Minutes 08 Seconds East, passing a set iron pin at 1628.40 feet, for a total distance of 1652.52 feet to a point in Athens County Road 75; thence along said road the following eighteen bearings and distances: 1) South 60 Degrees 10 Minutes 03 Seconds East a distance of 89.12 feet to a point; thence 2) South 62 Degrees 14 Minutes 58 Seconds East a distance of 155.00 feet to a point; thence 3) South 64 Degrees 03 Minutes 30 Seconds East a distance of 112.24 feet to a point; thence 4) South 68 Degrees 43 Minutes 40 Seconds East a distance of 50.15 feet to a point; thence 5) South 73 Degrees 01 Minutes 28 Seconds East a distance of 95.71 feet to a point; thence 6) South 76 Degrees 56 Minutes 13 Seconds East a distance of 108.50 feet to a point; thence 7) South 75 Degrees 17 Minutes 47 Seconds East a distance of 110.22 feet to a point; thence 8) South 64 Degrees 19 Minutes 59 Seconds East a distance of 71.63 feet to a point; thence 9) South 53 Degrees 04 Minutes 01 Seconds East a distance of 64.87 feet to a point; thence 10) South 39 Degrees 49 Minutes 32 Seconds East a distance of 125.78 feet to a point; thence 11) South 39 Degrees 23 Minutes 09 Seconds East a distance of 103.78 feet to a point; thence 12) South 47 Degrees 55 Minutes 08 Seconds East a distance of 78.41 feet to a point; thence 13) South 59 Degrees 59 Minutes 14 Seconds East a distance of 70.31 feet to a point; thence 14) South 72 Degrees 06 Minutes 44 Seconds East a distance of 64.08 feet to a point; thence 15) South 84 Degrees 24 Minutes 33 Seconds East a distance of 68.68 feet to a point; thence 16) North 88 Degrees 29 Minutes 10 Seconds East a distance of 74.08 feet to a point; thence 17) North 79 Degrees 58 Minutes 01 Seconds East a distance of 54.21 feet to a point; thence 18) North 68 Degrees 46 Minutes 45 Seconds East a distance of 53.02 feet to a point on the grantor's east line at the intersection of said road with Athens County Road 47; thence along the grantor's east line and said Athens County Road 47 the following three bearings and distances: 1) South 00 Degrees 25 Minutes 44 Seconds East a distance of 494.40 feet to a point; thence 2) South 01 Degrees 04 Minutes 40 Seconds West a distance of 274.41 feet to a point; thence 3) South 06 Degrees 19 Minutes 20 Seconds East a distance of 142.84 feet to a point at the grantor's southeast corner on the north line of aforesaid 151.76 acre tract; thence along the grantor's south line and north line of said 151.76 acre tract (see Boundary Agreement in Volume 324 Page 1 of the Athens County Official Deed Records) the following nine bearings and distances: 1) North 86 Degrees 50 Minutes 13 Seconds West, passing a set iron pin at 54.12 feet, for a total distance of 423.72 feet to a set iron pin*; thence 2) North 81 Degrees 16 Minutes 36 Seconds West a distance of 109.41 feet to a set iron pin*; thence 3) North 75 Degrees 37 Minutes 22 Seconds West a distance of 91.89 feet to a set iron pin*; thence 4) North 62 Degrees 14 Minutes 27 Seconds West a distance of 132.65 feet to a set iron pin*; thence 5) North 41 Degrees 27 Minutes 45 Seconds West a distance of 91.09 feet to a set iron pin*; thence 6) North 39 Degrees 06 Minutes 53 Seconds West a distance of 26.49 feet to a set iron pin*; thence 7) South 60 Degrees 14 Minutes 45 Seconds West a distance of 90.33 feet to a set iron pin*; thence 8) South 58 Degrees 58 Minutes 01 Seconds West a distance of 231.66 feet to a set iron pin*; thence 9) South 55 Degrees 28 Minutes 58 Seconds West a distance of 346.50 feet to the POINT OF BEGINNING and containing 35.162 acres and being part of a 303.990 acre tract described in Volume 299 Page 1546 of the Athens County Official Deed Records.

*Denotes calculated location of monument based on a previous survey.

Note: Unless otherwise noted, all set iron pins are 5/8 inch diameter rebar and 30 inches in length and capped with a plastic identification marker inscribed " L.F. SWOYER PS 6765." The above description was prepared under the supervision of Leonard F. Swoyer Registered Professional Land Surveyor No. 6765 and based on a survey performed by Southeastern Land Surveys dated September 15, 2003.

Subject to all easements and right of ways of record.

Description checked for
Mathematical Accuracy
ATHENS COUNTY
ENGINEER'S OFFICE

BY: S. Blause SUBDIVISIONS
DATE: 9-23-03

PROPERTY

CONSTRUCTION



SOUTHEASTERN LAND SURVEYS

LEONARD F. SWOYER
REGISTERED PROFESSIONAL LAND SURVEYOR

3428 Pleasant Hill Road
Athens, Ohio 45701
740/593-8701

TRACT 6

Situated in Sections 3 and 4 and in Fractions 3 and 12 of Section 9, and Fraction 12 of Section 10, Lodi Township, Town 4, Range 13, Athens County, Ohio and described as follows:

Commencing at the southwest corner of Section 3 of Lodi Township; thence on an assumed bearing North 00 Degrees 43 Minutes 53 Seconds East, passing a cross-notched stone* at 2032.80 feet and a set iron pin* at 2155.80 feet, for a total distance of 3374.76 feet to a stone* on the grantor's westerly line and east line of a 110.70 acre tract described in Volume 368 Page 227 of the Athens County Deed Records; thence along the grantor's westerly line and east line of said 110.70 acre tract the following four bearings and distances: 1) North 20 Degrees 09 Minutes 11 Seconds West a distance of 354.47 feet to a stone*; thence 2) North 44 Degrees 16 Minutes 22 Seconds West a distance of 314.40 feet to a stone*; thence 3) North 33 Degrees 01 Minutes 22 Seconds West a distance of 198.00 feet to a set iron pin*; thence 4) North 18 Degrees 31 Minutes 22 Seconds West a distance of 363.00 feet to a set iron pin* at the northeast corner of said 110.70 acre tract. THE TRUE POINT OF BEGINNING; thence along the grantor's westerly line and the north line of said 110.70 acre tract and the north line of a 0.136 acre tract described in Volume 324 Page 390 of the Athens County Official Deed Records South 67 Degrees 13 Minutes 38 Seconds West a distance of 969.21 feet to a railroad spike set* in Lodi Township Road 77; thence along the grantor's westerly line and along said road North 05 Degrees 50 Minutes 16 Seconds East a distance of 54.69 feet to a point on the east line of a 92.55 acre tract described in Volume 70 Page 599 of the Athens County Official Deed Records; thence along said Lodi Township Road 77 and the grantor's westerly line and the east line of said 92.55 acre tract the following seven bearings and distances: 1) North 27 Degrees 33 Minutes 09 Seconds East a distance of 107.60 feet to thence 2) North 46 Degrees 27 Minutes 25 Seconds East a distance of 194.23 feet to a point; thence 3) North 28 Degrees 39 Minutes 42 Seconds East a distance of 63.58 feet to a point; thence 4) North 07 Degrees 57 Minutes 12 Seconds East a distance of 45.88 feet to a point; thence 5) North 00 Degrees 52 Minutes 07 Seconds West a distance of 121.21 feet to a point; thence 6) North 03 Degrees 01 Minutes 20 Seconds West a distance of 347.39 feet to a point; thence 7) North 03 Degrees 10 Minutes 19 Seconds East a distance of 82.14 feet to a point at the intersection of said road with Athens County Road 75; thence along the grantor's westerly line and the east line of said 92.55 acre tract and along said Athens County Road 75 the following three bearings and distances: 1) North 43 Degrees 21 Minutes 02 Seconds East a distance of 52.67 feet to a point; thence 2) North 69 Degrees 01 Minutes 42 Seconds East a distance of 112.73 feet to a point; thence 3) North 68 Degrees 34 Minutes 21 Seconds East a distance of 43.62 feet to a point; thence leaving said road and along the grantor's westerly line and the east line of said 92.55 acre tract North 00 Degrees 47 Minutes 23 Seconds East, passing a found iron pin* at 48.53 feet, for a total distance of 1193.76 feet to a found iron pin* at the grantor's northwest corner, the northeast corner of said 92.55 acre tract on the south line of a 10.0 acre tract described in Volume 57 Page 785 of the Athens County Official Deed Records; thence along the grantor's north line and along the south line of said 10.0 acre tract and the south line of a 64.50 acre tract also described in Volume 57 Page 785 of the Athens County Official Deed Records South 89 Degrees 04 Minutes 26 Seconds East a distance of 1658.09 feet to a set iron pin*; thence along a new line South 01 Degrees 10 Minutes 10 Seconds West, passing a set iron pin at 976.80 feet, for a total distance of 1337.57 feet to a set iron pin*; thence South 67 Degrees 13 Minutes 38 Seconds West, passing set iron pins at 575.71 feet, and 615.08 feet for a total distance of 1250.21 feet to the POINT OF BEGINNING and containing 68.605 acres and being a part of a 303.990 acre tract described in Volume 299 Page 1546 of the Athens County Official Deed Records and being all 0.016 acres of a 0.016 acre tract described in Volume 324 Page 393 of the Athens County Official Deed Records. There are 0.016 acres in Fraction 3 of Section 9, 25.431 acres in Fraction 12 of Section 9, 24.379 acres in Fraction 12 of Section 10, and 6.237 acres in Section 3 and 12.542 acres in Section 4.

*Denotes calculated location of monument based on a previous survey.

Note: Unless otherwise noted, all set iron pins are 5/8 inch diameter rebar and 30 inches in length and capped with a plastic identification marker inscribed " L.F. SWOYER PS 6765."

The above description was prepared under the supervision of Leonard F. Swoyer Registered Professional Land Surveyor No. 6765 and based on a survey performed by Southeastern Land Surveys dated September 15, 2003.

Subject to all easements and right of ways of record.

PROPERTY

CONSTRUCTION

SUBDIVISIONS

Description checked for
Mathematical Accuracy
ATHENS COUNTY
ENGINEER'S OFFICE
BY:
DATE:

S. B. Swoyer
9-23-03

10.0 AC.

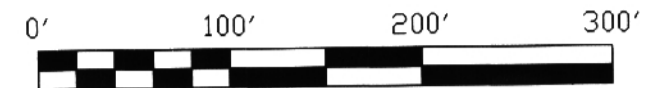
DAVID & JAMES NIGGEMEYER 57-785 D.R. 64.50 AC.

342-389
12.00 AC.

77.22 AC.

39.5 AC.

JOSEPH C. PATERA
255-324 D.R.



LEGEND

These standard symbols will be found in the drawing.

- = IRON PIN SET - THIS SURVEY
- = IRON PIN SET (CALC. LOCATION)
- = IRON PIN FOUND (CALC. LOCATION)
- ⊞ = STONE FOUND (X NOTCHED) - CALC. LOCATION
- = STONE FOUND - CALC. LOCATION
- ⊕ = RAILROAD SPIKE SET (CALC. LOCATION)

TRACT 6 68.605 ACRES

TRACT 1 48.794 ACRES

LINE	BEARING	DISTANCE
L1	S 35°21'44" E	69.07'
L2	S 29°57'56" E	150.84'
L3	S 27°36'22" E	149.98'
L4	S 24°54'51" E	141.52'
L5	S 20°56'41" E	121.74'
L6	S 17°15'20" E	135.86'
L7	S 15°31'30" E	98.75'
L8	S 16°00'34" E	70.01'
L9	S 11°33'35" E	108.58'
L10	S 05°03'37" E	36.69'

TRACT 2 9.575 ACRES

TRACT 3 82.777 ACRES

LINE	BEARING	DISTANCE
L11	S 05°03'37" E	331.68'
L12	S 00°42'09" E	143.55'

LINE	BEARING	DISTANCE
L13	S 81°47'13" W	8.14'
L14	N 80°01'59" W	22.19'
L15	N 60°12'10" W	33.79'
L16	S 84°36'44" W	60.99'
L17	N 64°49'09" W	92.14'
L18	N 79°44'06" W	50.64'
L19	N 62°42'21" W	60.62'
L20	N 76°48'36" W	121.87'
L21	N 65°02'27" W	142.87'
L22	N 71°19'14" W	93.08'
L23	S 25°50'32" W	36.39'
L24	N 87°50'06" W	119.09'
L25	N 88°49'03" W	226.19'
L26	N 67°07'27" W	127.28'
L27	N 45°25'30" W	102.86'
L28	N 26°27'47" W	72.42'
L29	N 28°43'01" W	111.22'
L30	N 20°56'42" W	40.11'

LINE	BEARING	DISTANCE
L41	S 68°46'45" W	53.02'
L42	S 79°58'01" W	54.21'
L43	S 88°29'10" W	74.08'
L44	N 84°24'33" W	68.68'
L45	N 72°06'44" W	64.08'
L46	N 59°59'14" W	70.31'
L47	N 47°55'08" W	78.41'
L48	N 39°49'32" W	103.78'
L49	N 38°49'32" W	25.78'
L50	N 53°04'01" W	64.87'
L51	N 64°12'59" W	71.63'
L52	N 75°17'47" W	110.22'
L53	N 76°56'13" W	108.50'
L54	N 73°01'28" W	95.71'
L55	N 68°43'40" W	50.15'
L56	N 64°03'30" W	112.24'
L57	N 62°14'58" W	155.00'
L58	N 60°10'03" W	89.12'
L59	N 54°22'08" W	90.24'
L60	N 47°53'33" W	54.38'
L61	N 45°49'03" W	251.22'
L62	N 45°44'06" W	27.86'
L63	N 45°49'20" W	296.74'
L64	N 45°04'26" W	268.29'
L65	N 44°21'07" W	60.44'

LINE	BEARING	DISTANCE
L31	S 09°11'33" W	161.85'
L32	S 17°48'20" W	162.42'
L33	S 21°40'05" W	285.44'
L34	S 23°15'27" W	126.64'
L35	S 25°50'15" W	160.63'
L36	S 27°07'53" W	254.68'
L37	S 24°13'28" W	143.44'
L38	S 18°49'03" W	83.21'
L39	S 14°51'19" W	176.74'
L40	S 04°26'00" W	162.63'

LINE	BEARING	DISTANCE
L66	S 00°25'44" E	494.40'
L67	S 01°04'40" W	274.41'
L68	S 06°19'20" E	142.84'

LINE	BEARING	DISTANCE
L69	N 86°50'13" W	423.72'
L70	N 81°16'36" W	109.41'
L71	N 75°37'22" W	91.89'
L72	N 62°14'27" W	132.65'
L73	N 41°27'45" W	91.09'
L74	N 39°06'53" W	26.49'
L75	S 60°14'45" W	90.33'
L76	S 58°58'01" W	231.66'
L77	S 55°28'58" W	346.50'

KENNETH & JANET BELL
304-111
39.56 AC.

JOSEPH W. & PATRICIA A. DAVIDSON ETAL.
299-1546 D.R.
303.990 ACRES

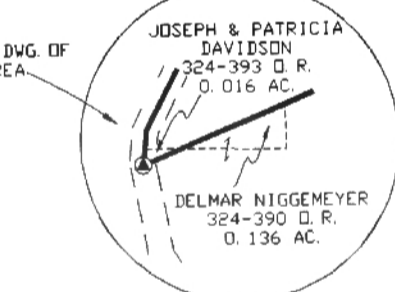
LAWRENCE AMBROSE HOWARD
268-613
151.76 AC.

LAWRENCE AMBROSE AND ZELDA HOWARD
1.49 AC. 32-864 D.R.)

GERALD SVENDSEN
70-559 D.R.
92.55 AC.

GERALD SVENDSEN
70-559 D.R.
92.55 AC.

LINE	BEARING	DISTANCE
L78	N 05°50'16" E	54.69'
L79	N 27°33'09" E	107.60'
L80	N 46°27'25" E	194.23'
L81	N 28°39'42" E	63.58'
L82	N 07°57'12" E	45.88'
L83	N 00°52'07" W	121.21'
L84	N 03°01'20" W	347.39'
L85	N 03°10'19" E	82.14'
L86	N 43°21'02" E	52.67'
L87	N 69°01'42" E	112.73'
L88	N 68°34'21" E	43.62'



DELMAR L. NIGGEMEYER
368-227
110.70 AC.

PLAT OF SURVEY OF TRACTS 1 THROUGH 6, INCLUSIVE, SITUATED IN FRACTIONS 3 AND 12 OF SECTIONS 9 AND 10 AND SECTIONS 3 AND 4 OF LODI TOWNSHIP, TOWN 4, RANGE 13, ATHENS COUNTY, OHIO.

PREPARED BY:
SOUTHEASTERN LAND SURVEYS
SEPTEMBER 15, 2003
FOR: MR. JOE DAVIDSON

LEONARD F. SWOYER, P. 6765



GLADYS WEISENBACH ETAL
373-743 59.18 AC.

BOUNDARY AGREEMENT LINE (REF: V.324-PG.1 D.R.)

N 00°43'53" E 123.00'

N 85°55'03" W 825.00'

N 89°18'54" W 223.74'

N 00°43'53" E 2032.80' (30.80 CHAINS) REF: VOL. 6 PG. 301 ATHENS CO. ENGR. SURVEY RECORDS.

THE S.W. CORNER OF SEC. 3

Description checked for Mathematical Accuracy
ATHENS COUNTY ENGINEERS OFFICE
BY: *S. Davidson*
DATE: 9-23-03