



ROBINSON SURVEYING

MEMBER-PROFESSIONAL LAND SURVEYORS OF OHIO
12355 LIARS CORNER ROAD, MILLFIELD, OHIO 45761

ALAN D. ROBINSON
Registered Land Surveyor

TELEPHONE
(740) 593-8774

DESCRIPTION OF A 12.203 ACRE TRACT

Situated in Section 30, Town 4, Range 13, Lodi Township, Athens County, Ohio, and being a part of a 31.32 acre tract now belonging to Paul Erwin and described in Volume 268 Page 561 Athens County Deed Records and being more particularly described as follows:

Commencing at the Northeast corner Section 30 (calculated);
 thence, following the North line of said Section on an assumed Bearing and distance, North 86 degrees 49 minutes 54 seconds West, a distance of 1092.27 feet to a Twin Hickory Tree found, passing an iron pin found at 777.82 feet, said Hickory Tree found being the POINT OF BEGINNING of the following described tract;
 thence, leaving said Section line, South 55 degrees 38 minutes 07 seconds West, a distance of 150.70 feet to an iron pin found;
 thence South 11 degrees 47 minutes 38 seconds East, a distance of 724.99 feet to a point in County Road 75, passing an iron pin set at 700.93 feet;
 thence, following said Road, South 70 degrees 19 minutes 07 seconds West, a distance of 306.24 feet to a point;
 thence South 81 degrees 32 minutes 36 seconds West, a distance of 138.23 feet to a point;
 thence South 87 degrees 28 minutes 04 seconds West, a distance of 436.30 feet to a point;
 thence South 86 degrees 00 minutes 49 seconds West, a distance of 85.99 feet to a point at a culvert being a Southwest corner of the Grantor's tract;
 thence, leaving said road and following a creek, North 34 degrees 43 minutes 24 seconds East, a distance of 40.03 feet to a point;
 thence North 27 degrees 29 minutes 50 seconds East, a distance of 170.86 feet to a point;
 thence North 24 degrees 46 minutes 15 seconds East, a distance of 97.91 feet to a point;
 thence North 14 degrees 24 minutes 19 seconds East, a distance of 65.43 feet to a point;
 thence North 41 degrees 28 minutes 34 seconds East, a distance of 31.03 feet to a point;
 thence North 30 degrees 50 minutes 04 seconds East, a distance of 39.00 feet to a point;
 thence North 40 degrees 34 minutes 05 seconds East, a distance of 20.18 feet to a point;
 thence North 17 degrees 19 minutes 03 seconds East, a distance of 34.72 feet to a point;
 thence North 24 degrees 28 minutes 25 seconds East, a distance of 33.49 feet to a point;
 thence North 55 degrees 57 minutes 32 seconds East, a distance of 26.82 feet to a point;
 thence North 42 degrees 25 minutes 21 seconds East, a distance of 45.95 feet to a point;
 thence North 42 degrees 38 minutes 21 seconds East, a distance of 40.20 feet to a point;
 thence North 32 degrees 38 minutes 26 seconds East, a distance of 57.21 feet to a point;
 thence North 31 degrees 05 minutes 44 seconds East, a distance of 67.97 feet to a point;
 thence North 52 degrees 09 minutes 29 seconds East, a distance of 44.96 feet to a point;
 thence North 42 degrees 34 minutes 06 seconds East, a distance of 170.70 feet to a point;
 thence North 8 degrees 37 minutes 24 seconds East, a distance of 41.96 feet to a point;
 thence North 26 degrees 34 minutes 51 seconds East, a distance of 47.31 feet to a point;
 thence North 68 degrees 51 minutes 05 seconds East, a distance of 53.01 feet to a point;
 Thence-North 48 degrees 32 minutes 01 second East, a distance of 67.09 feet to a point in the aforementioned Section line;
 thence, leaving said creek and following said Section line, South 86 degrees 49 minutes 54 seconds East, a distance of 261.93 feet to the POINT OF BEGINNING, passing an iron pin set at 38.75 feet; said described tract containing 12.203 acres (531,568.1430 square feet).

Bearings are based on previous Surveys and are used to denote angles only.

Subject to all easements and right-of-way of record.

All iron pins set are 5/8 inch by 30-inch long rebar with a yellow cap stamped Alan Robinson RLS 8049.

Alan D. Robinson P.S. 8049 bases the above description on a field Survey completed February 5, 2001, *Alan D. Robinson*

Description checked for
 Mathematical Accuracy
 ATHENS COUNTY
 ENGINEER'S OFFICE
 BY: *S. Blaus*
 DATE: *2-5-01*

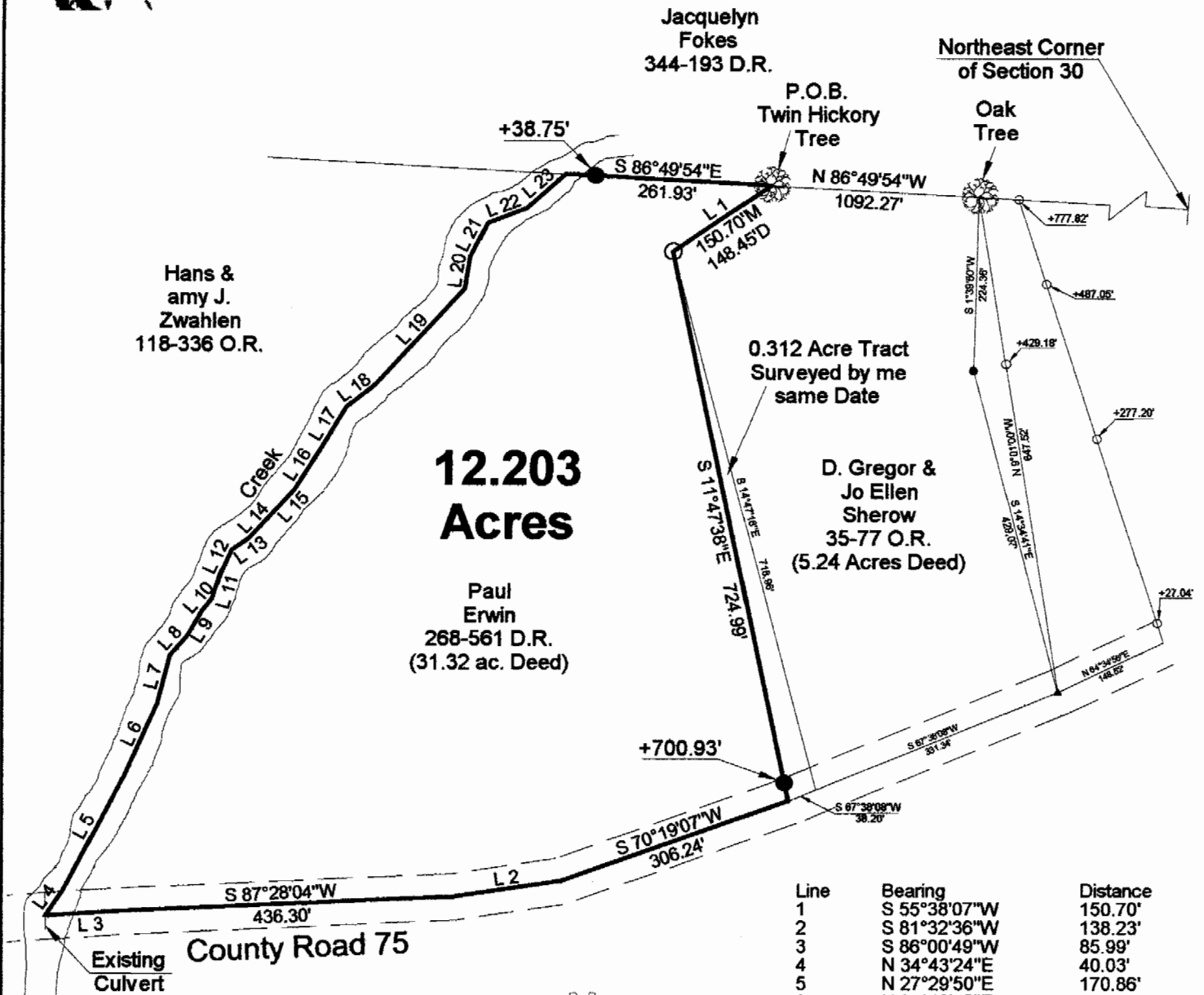


Lod # 30

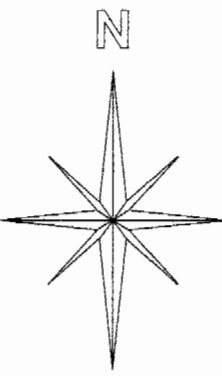


ROBINSON SURVEYING

12355 Liars Corner Rd.
 Millfield, Ohio 45761
 (740) 593-8774
 1-800-296-9984



Line	Bearing	Distance
1	S 55°38'07"W	150.70'
2	S 81°32'36"W	138.23'
3	S 86°00'49"W	85.99'
4	N 34°43'24"E	40.03'
5	N 27°29'50"E	170.86'
6	N 24°46'15"E	97.91'
7	N 14°24'19"E	65.43'
8	N 41°28'34"E	31.03'
9	N 30°50'04"E	39.00'
10	N 40°34'05"E	20.18'
11	N 17°19'03"E	34.72'
12	N 24°28'25"E	33.49'
13	N 55°57'32"E	26.82'
14	N 42°25'21"E	45.95'
15	N 42°38'21"E	40.20'
16	N 32°38'26"E	57.21'
17	N 31°05'44"E	67.97'
18	N 52°09'29"E	44.96'
19	N 42°34'06"E	170.70'
20	N 8°37'24"E	41.96'
21	N 26°34'51"E	47.31'
22	N 68°51'05"E	53.01'
23	N 48°32'01"E	67.09'

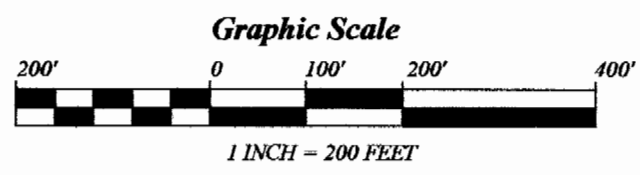


Description checked for
 Mathematical Accuracy
 ATHENS COUNTY
 ENGINEER'S OFFICE
 BY: S. Blause
 DATE: 2-5-01

- = Iron Pin Set W/A Yellow Cap
 Stamped Alan Robinson RLS 8049
- = Iron Pin Found
- △ = Rail Road Spike Set
- ▲ = Rail Road Spike found
- ☒ = Stone Found
- M = Measured
- D = Deed
- C = Calculated

BEARING REFERENCE
 BASED ON PREVIOUS SURVEYS AND
 ARE USED TO DENOTE ANGLES ONLY

References
 Deeds as Noted
 Previous Surveys
 Current Tax Plats
 Existing Monumentation



Plat of Survey of a 12.203 acre Tract
 Surveyed for: **Paul Erwin** Date **02/05/2001**
 Subdivision: _____
 Section 30, Town 4, Range 13, Iodi Township
 Athens County, State of Ohio
Alan D. Robinson Registered Professional Land Surveyor No. 8049
Alan D. Robinson

