

6.13 ACRE PARCEL

Situated in Lodi Township, Athens County, State of Ohio, and being in Section 34, Town 4 North, Range 13 West of the Ohio Company's Purchase and being described as follows: beginning at a point, said point being N 89° 26' 15" E, a distance of 1856.37' along the north line of said Section 34 and the south line of the Couladis parcel as described in the Athens County Official Records Volume 348, Page 784, Tracts 2 and the north line of the Jeffers parcel as described in the Athens County Official Records Volume 494, Page 97 and thence S 00° 15' 30" W, a distance of 349.07' along the west line of the Gwinn parcel as described in the Athens County Official Records Volume 186, Page 701 and the east line of the Jeffers parcel as described in the Athens County Official Records Volume 494, Page 97 from the southwest corner of Section 35, Lodi Township;

thence S 45° 49' 04" W, a distance of 696.05' along a newly created line through the Jeffers parcel as described in the Athens County Official Records Volume 494, Page 97 to an iron pin set;

thence S 31° 38' 20" E, a distance of 408.29' along a newly created line through the Jeffers parcel as described in the Athens County Official Records Volume 494, Page 97 to an iron pin set;

thence S 73° 57' 03" E, a distance of 292.25' along a newly created line through the Jeffers parcel as described in the Athens County Official Records Volume 494, Page 97 to the east line of the Jeffers parcel as described in the Athens County Official Records Volume 494, Page 97 and the west line of the Gwinn parcel as described in the Athens County Official Records Volume 186, Page 701 to a 20' White Oak Tree;

thence N 00° 15' 30" E, a distance of 913.52' along the east line of the Jeffers parcel as described in the Athens County Official Records Volume 494, Page 97 and the west line of the Gwinn parcel as described in the Athens County Official Records Volume 186, Page 701 to the POINT OF BEGINNING; said described tract containing 6.13 Acres, more or less, excepting all legal utility easements and rights of way.

Reference Deed:

6.13 ACRES FROM OFFICIAL RECORDS VOLUME 494, PAGE 97, TRACT 3

Bearings are assumed and are for angle measurement only.

Note: This parcel must be conveyed to an adjoiner.

The above description is based on a survey in March 2014 by E & E Borderline Surveying, Robert R. Eason, Ohio P.S. No. 7033.

Description Checked for
Mathematical Accuracy
Athens County
ENGINEER'S OFFICE
BY: Perenchy Jullino
DATE: 3/20/14



**PLAT OF PARCELS SURVEYED
FOR
JEFFERS**

LODI TOWNSHIP, ATHENS COUNTY, OHIO, SECTION 34, T4N, 14N, R13W

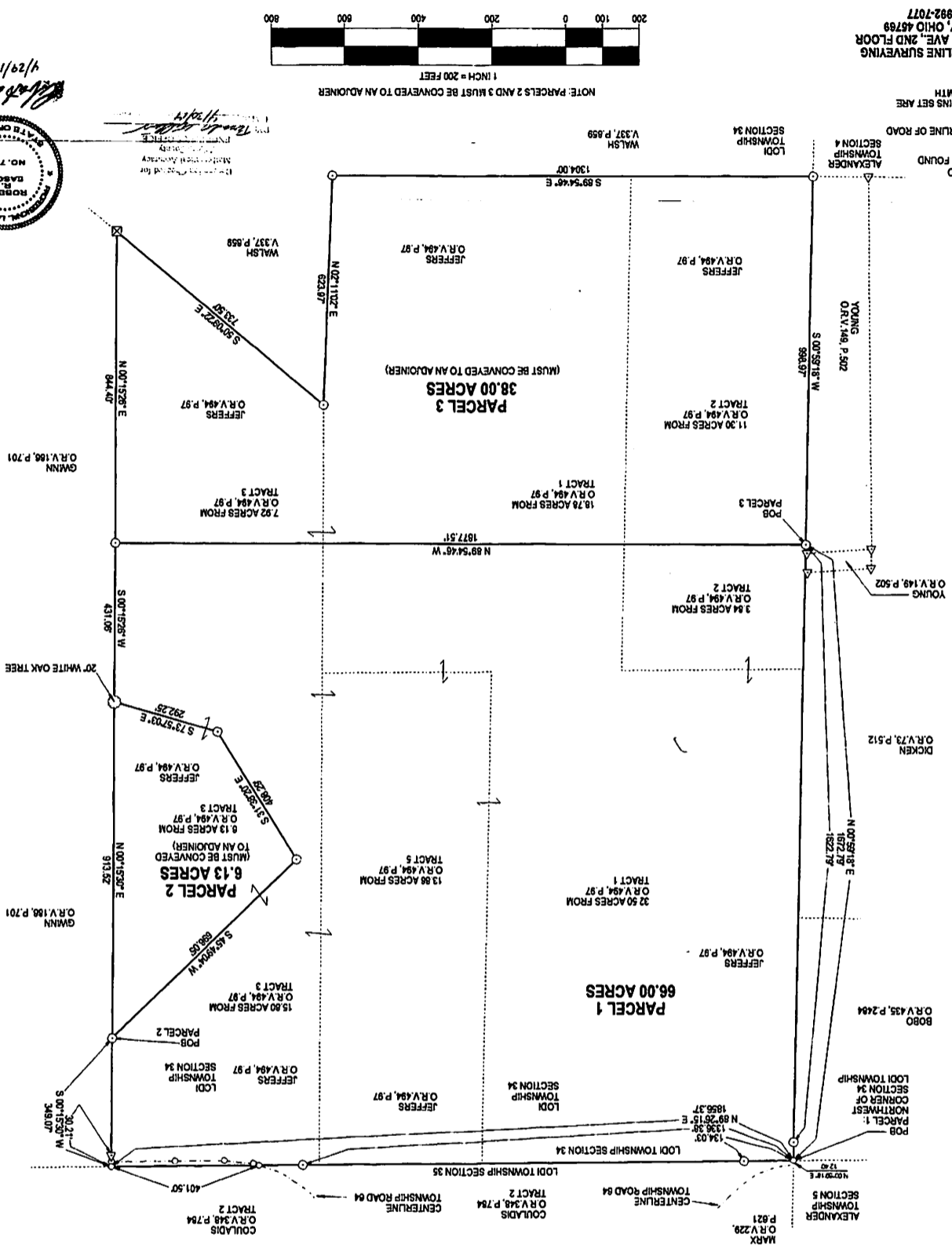
REFERENCE DEED.

PARCEL 1: 66.00 ACRES TOTAL
32.50 ACRES FROM OFFICIAL RECORDS VOLUME 494, PAGE 97, TRACT 1
13.86 ACRES FROM OFFICIAL RECORDS VOLUME 494, PAGE 97, TRACT 3
15.80 ACRES FROM OFFICIAL RECORDS VOLUME 494, PAGE 97, TRACT 2
3.84 ACRES FROM OFFICIAL RECORDS VOLUME 494, PAGE 97, TRACT 2

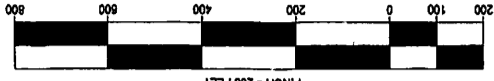
PARCEL 2: 6.13 ACRES TOTAL
6.13 ACRES FROM OFFICIAL RECORDS VOLUME 494, PAGE 97, TRACT 3

PARCEL 3: 38.00 ACRES TOTAL
18.78 ACRES FROM OFFICIAL RECORDS VOLUME 494, PAGE 97, TRACT 1
7.82 ACRES FROM OFFICIAL RECORDS VOLUME 494, PAGE 97, TRACT 3
11.30 ACRES FROM OFFICIAL RECORDS VOLUME 494, PAGE 97, TRACT 2

BEARINGS ARE ASSUMED AND ARE FOR ANGLE MEASUREMENT ONLY.
THIS PLAT SHOWS NO LEGAL EASEMENTS OR RIGHTS OF WAY.



E & E BORDERLINE SURVEYING
104 MULBERRY AVE, 2ND FLOOR
POWEROY, OHIO 45769
(740) 992-7077



NOTE: ALL IRON PINS SET ARE
5/8" X 30" REBAR WITH
PLASTIC ID CAP

○ SURVEY POINT
● IRON PIN SET
▲ IRON PIN FOUND
□ CORNERSTONE FOUND
○ 20' WHITE OAK
--- CENTERLINE OF ROAD



4/29/14

PLAT OF PARCELS SURVEYED FOR JEFFERS

LODI TOWNSHIP, ATHENS COUNTY, OHIO, SECTION 34, T4N, R13W

REFERENCE DEED:

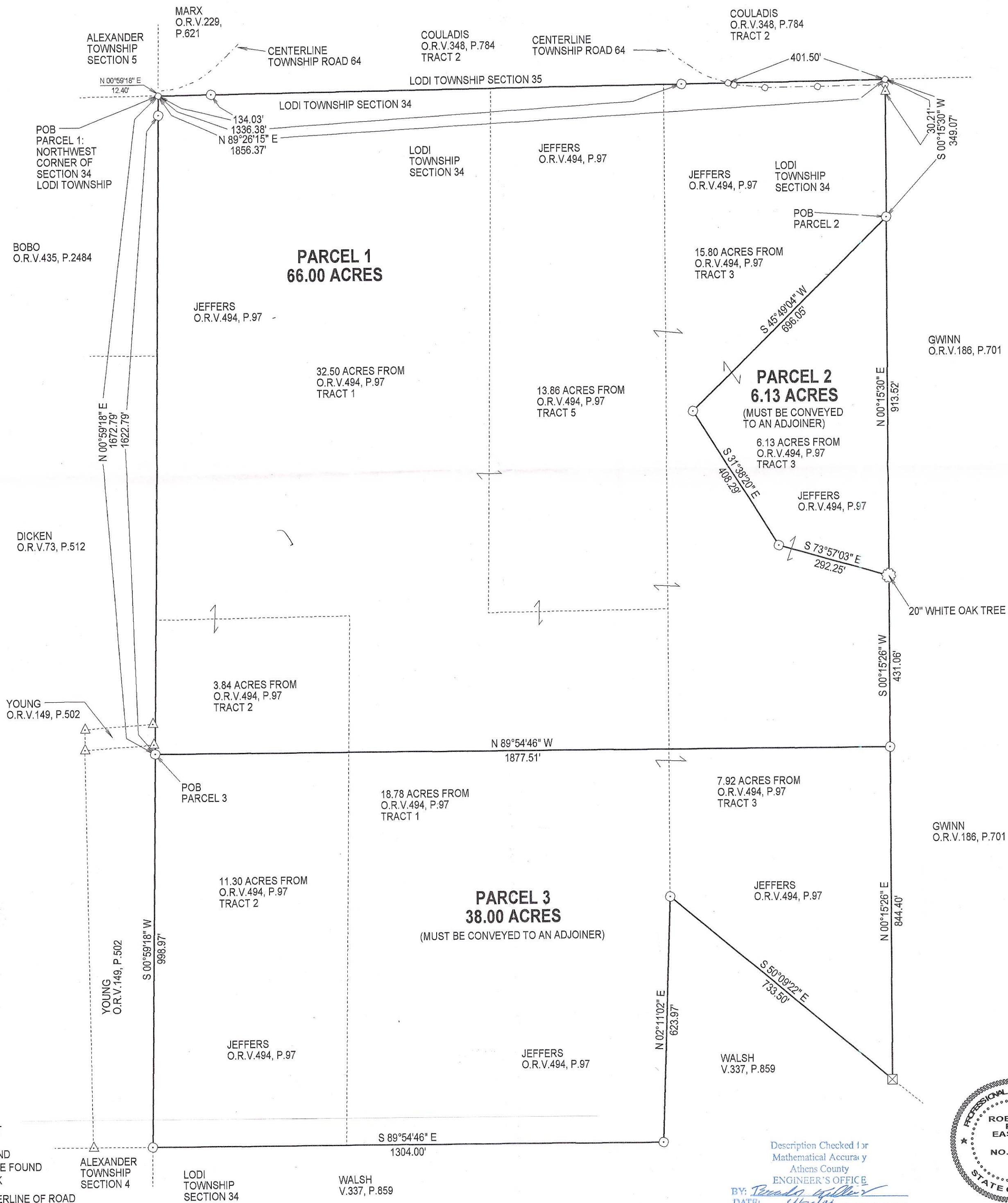
PARCEL 1: 66.00 ACRES TOTAL
 32.50 ACRES FROM OFFICIAL RECORDS VOLUME 494, PAGE 97, TRACT 1
 13.86 ACRES FROM OFFICIAL RECORDS VOLUME 494, PAGE 97, TRACT 5
 15.80 ACRES FROM OFFICIAL RECORDS VOLUME 494, PAGE 97, TRACT 3
 3.84 ACRES FROM OFFICIAL RECORDS VOLUME 494, PAGE 97, TRACT 2

PARCEL 2: 6.13 ACRES TOTAL
 6.13 ACRES FROM OFFICIAL RECORDS VOLUME 494, PAGE 97, TRACT 3

PARCEL 3: 38.00 ACRES TOTAL
 18.78 ACRES FROM OFFICIAL RECORDS VOLUME 494, PAGE 97, TRACT 1
 7.92 ACRES FROM OFFICIAL RECORDS VOLUME 494, PAGE 97, TRACT 3
 11.30 ACRES FROM OFFICIAL RECORDS VOLUME 494, PAGE 97, TRACT 2

BEARINGS ARE ASSUMED AND ARE FOR ANGLE MEASUREMENT ONLY.

THIS PLAT SHOWS NO LEGAL EASEMENTS OR RIGHTS OF WAY.

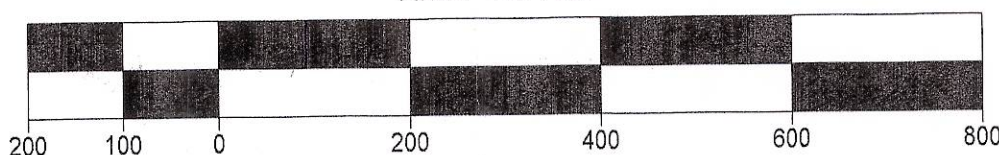


- SURVEY POINT
- ⊙ IRON PIN SET
- ▲ IRON PIN FOUND
- ⊠ CORNERSTONE FOUND
- 20" WHITE OAK
- CENTERLINE OF ROAD

NOTE: ALL IRON PINS SET ARE
 5/8" X 30" REBAR WITH
 PLASTIC ID CAP

NOTE: PARCELS 2 AND 3 MUST BE CONVEYED TO AN ADJOINER

1 INCH = 200 FEET



E & E BORDERLINE SURVEYING
 104 MULBERRY AVE., 2ND FLOOR
 POMEROY, OHIO 45769
 (740) 992-7077

Description Checked for
 Mathematical Accuracy
 Athens County
 ENGINEER'S OFFICE
 BY: *Robert Eason*
 DATE: *4/29/14*



Robert Eason
 4/29/14