

Situated in Section 4, T.4, R.13, Lodi Township, Athens County, Ohio and being more particularly described as follows:

Beginning at a stone found at the North-east corner of Section 4, thence South 0 degrees 52 minutes 14 seconds East, a distance of 554.71 feet to a point in Township Road 102, passing an iron pin set at 542.71 feet;
thence, along said road, North 57 degrees 30 minutes 32 seconds West, a distance of 191.98 feet;
thence North 72 degrees 15 minutes 28 seconds West, a distance of 126.31 feet;
thence North 81 degrees 32 minutes 45 seconds West, a distance of 103.86 feet;
thence South 85 degrees 02 minutes 49 seconds West, a distance of 118.71 feet;
thence South 70 degrees 27 minutes 41 seconds West, a distance of 483.36 feet;
thence South 63 degrees 58 minutes 20 seconds West, a distance of 209.83 feet;
thence, leaving said road, North 53 degrees 32 minutes 07 seconds West, a distance of 1142.87 feet to an iron pin set, passing an iron pin set at 20.00 feet;
thence, along the North-line of Section 4, South 89 degrees 30 minutes 47 seconds East, a distance of 2058.07 feet to the POINT OF BEGINNING; said described tract containing 20.048 acres.

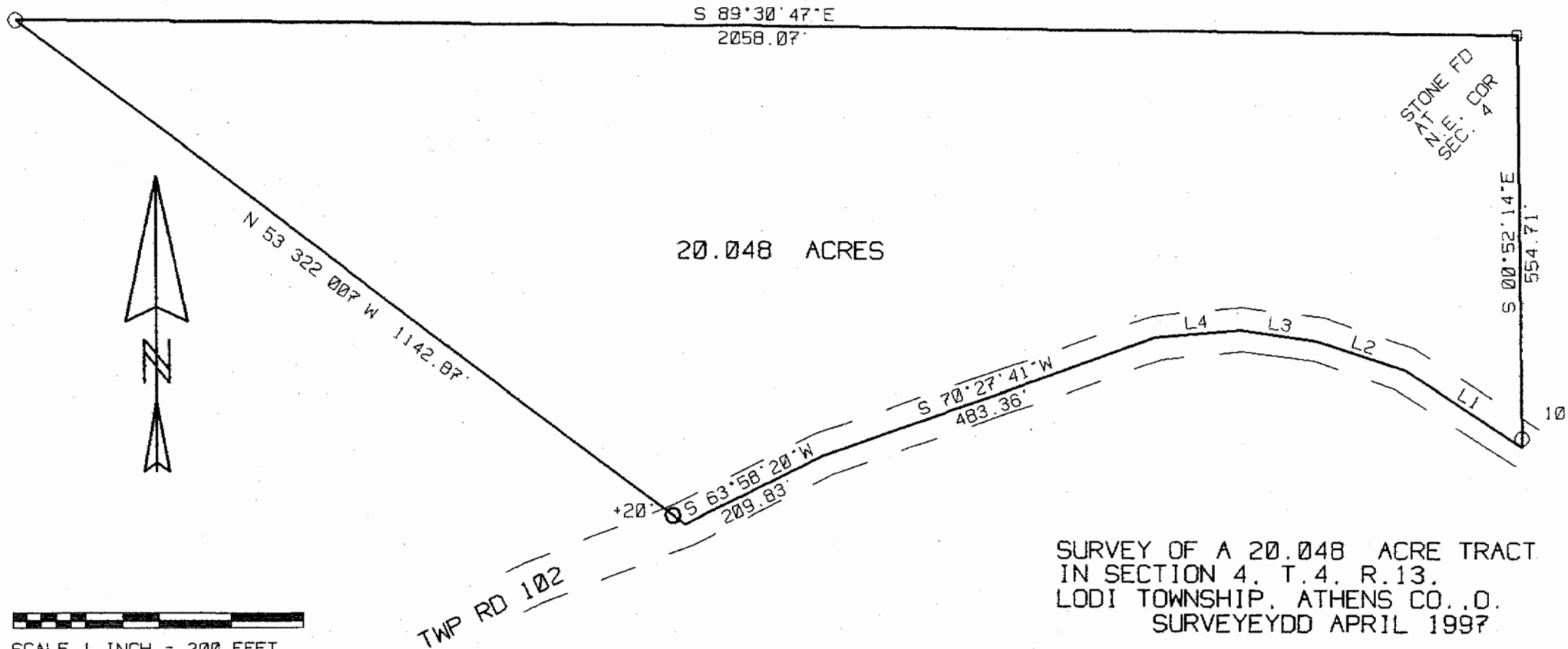
Subject to all easements and rights of way of record.

The above description is based on a field survey completed April 1997 by John M. Branner P.S. 6805

Division of Land for
Mathematical Accuracy
ATHENS COUNTY
ENGINEER'S OFFICE
BY: S. Blause
DATE: 4-29-97

33

Lod #4



20.048 ACRES



SCALE 1 INCH = 200 FEET
 = IRON PIN SET
 ASSUMED BEARINGS

LINE	BEARING	DISTANCE
L 1	N 57°30'32"W	191.98'
L 2	N 72°15'28"W	126.31'
L 3	N 81°32'45"W	103.86'
L 4	S 85°02'49"W	118.71'
L 5	S 72°05'46"W	80.86'

SURVEY OF A 20.048 ACRE TRACT
 IN SECTION 4, T.4, R.13.
 LODI TOWNSHIP, ATHENS CO., O.
 SURVEYED APRIL 1997

JOHN M. BRANNER P.S. 6805
 12500 N. PEACH RIDGE ROAD
 ATHENS, OHIO 614-592-5778

DATE 4-29-97
J. Beause

74