

DESCRIPTION OF A 30.03 ACRE TRACT

Situated in Section 4, T.4, R.13, Lodi Township, Athens County, Ohio and being more particularly described as follows:

Beginning at an iron pin set at the South-west corner of the North-east Quarter of Section 4,

thence North 00 Degrees 00 Minutes East, a distance of 1166.19 feet to a point in Township Road 102, passing an iron pin set at 1127.78 feet;

thence, along said road, North 84 degrees 36 minutes 54 seconds East, a distance of 158.25 feet;

thence North 68 degrees 43 minutes 27 seconds East, a distance of 448.25 feet;

thence North 71 degrees 03 minutes 00 seconds East, a distance of 356.04 feet;

thence North 63 degrees 38 minutes 12 seconds East, a distance of 153.65 feet;

thence, leaving said road, South 29 degrees 11 minutes 53 seconds East, a distance of 135.42 feet, passing an iron pin set at 13.25 feet;

thence South 10 degrees 29 minutes 32 seconds West, a distance of 1446.31 feet to an iron pin set;

thence North 89 degrees 08 minutes 23 seconds West, a distance of 852.45 feet to the POINT OF BEGINNING; said described tract containing 30.035 acres.

Subject to all easements and rights of way of record.

John M. Branner
John M. Branner P.S. 6805

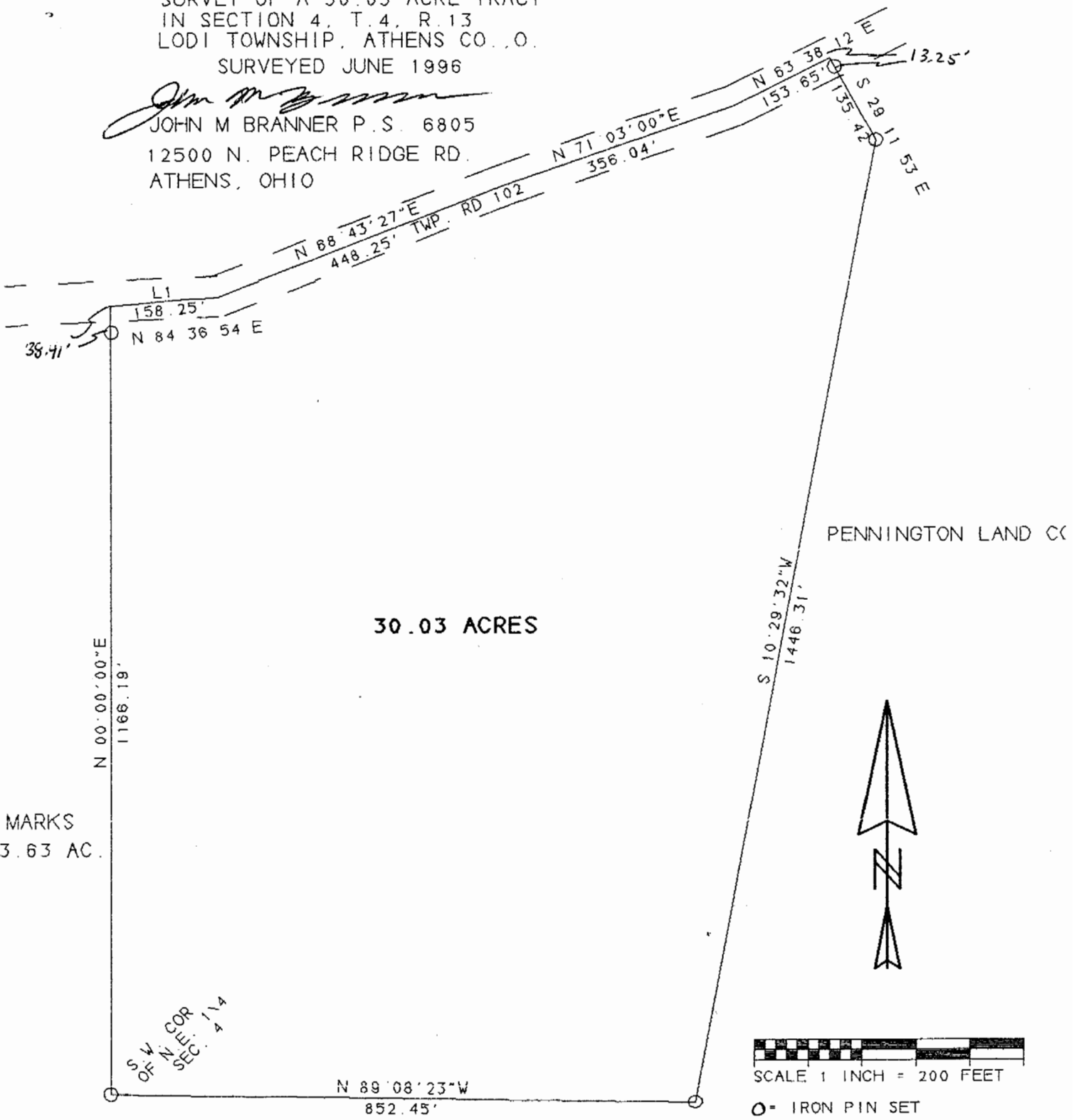
Description checked for
Mathematical Accuracy
ATHENS COUNTY
ENGINEER'S OFFICE
BY: Donna McLean
DATE: 6-24-96

*Lodi Twp.
Sect. 4*

7

SURVEY OF A 30.03 ACRE TRACT
 IN SECTION 4, T. 4, R. 13
 LODI TOWNSHIP, ATHENS CO., O.
 SURVEYED JUNE 1996

John M Branner
 JOHN M BRANNER P.S. 6805
 12500 N. PEACH RIDGE RD.
 ATHENS, OHIO



SCALE 1 INCH = 200 FEET

○ = IRON PIN SET

8