

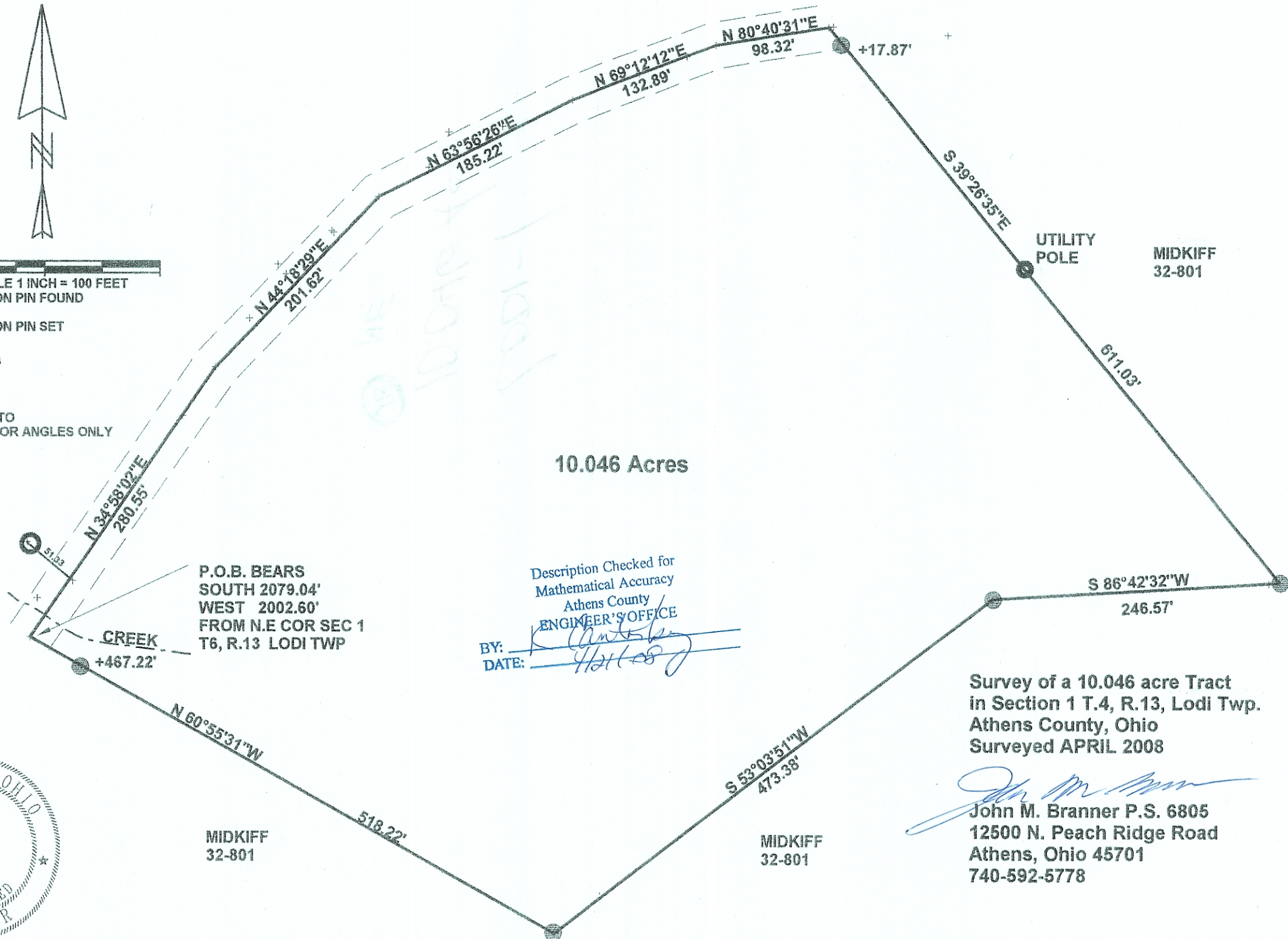


SCALE 1 INCH = 100 FEET

○ = IRON PIN FOUND

● = IRON PIN SET

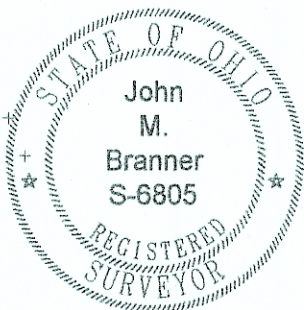
Reference Documents
Prior Surveys
Tax -Plat
Deeds
ASSUMED BEARING TO
BE USED FOR INTERIOR ANGLES ONLY



10.046 Acres

P.O.B. BEARS
SOUTH 2079.04'
WEST 2002.60'
FROM N.E COR SEC 1
T6, R.13 LODI TWP

Description Checked for
Mathematical Accuracy
Athens County
ENGINEER'S OFFICE
BY: *[Signature]*
DATE: *11/11/08*



Survey of a 10.046 acre Tract
in Section 1 T.4, R.13, Lodi Twp.
Athens County, Ohio
Surveyed APRIL 2008

[Signature]
John M. Branner P.S. 6805
12500 N. Peach Ridge Road
Athens, Ohio 45701
740-592-5778

MIDKIFF
32-801

MIDKIFF
32-801

MIDKIFF
32-801