

Branner Surveying

12500 N. Peach Ridge
Athens, Ohio

Situated in Section 32, T.4, R.13, Lodi Township, Athens County, Ohio and being more particularly described as follows:

Commencing at a stone in the southeast corner of Section 32, Lodi Township thence, South 3 degrees 37 minutes 16 seconds West, a distance of 442.78 feet,

Thence, North 52 degrees 22 minutes 17 seconds West, a distance of 342.54 feet to an iron pin found,

Thence, North 18 degrees 36 minutes 37 seconds West, a distance of 270.55 feet to an iron pin found,

Thence, North 69 degrees 2 minutes 42 seconds East, a distance of 122.79 feet to an iron pin found,

Thence, North 24 degrees 3 minutes 18 seconds West, a distance of 131.92 feet to an iron pin found,

Thence, South 65 degrees 43 minutes 56 seconds West, a distance of 204.15 feet to an iron pin found,

Thence, North 36 degrees 28 minutes 5 seconds West, a distance of 266.77 feet to a point, *the point of beginning*,

Thence, North 36 degrees 28 minutes 5 seconds West, a distance of 522.97 feet to an iron pin found,

Thence, North 33 degrees 41 minutes 16 seconds West, a distance of 603.14 feet to an iron pin found,

Thence, North 3 degrees 36 minutes 36 seconds East, a distance of 130.61 feet to an iron pin found,

Thence, North 78 degrees 47 minutes 13 seconds East, a distance of 205.63 feet to an iron pin found,

Thence, North 4 degrees 31 minutes 39 seconds East, a distance of 44.98 feet to a point in Township Road 68,

Thence, along said road, South 82 degrees 47 minutes 14 seconds East, a distance of 41.45 feet to a point,

Thence, South 72 degrees 44 minutes 56 seconds East, a distance of 161.74 feet to a point,

Thence, North 88 degrees 1 minute 39 seconds East, a distance of 146.96 feet to a point,

Thence, South 80 degrees 3 minutes 17 seconds East, a distance of 169.23 feet to a point,

Thence, South 76 degrees 17 minutes 22 seconds East, a distance of 191.38 feet to a point,

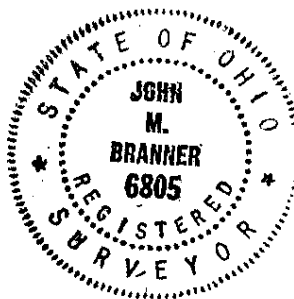
Thence, South 64 degrees 13 minutes 18 seconds East, a distance of 102.81 feet to a point,

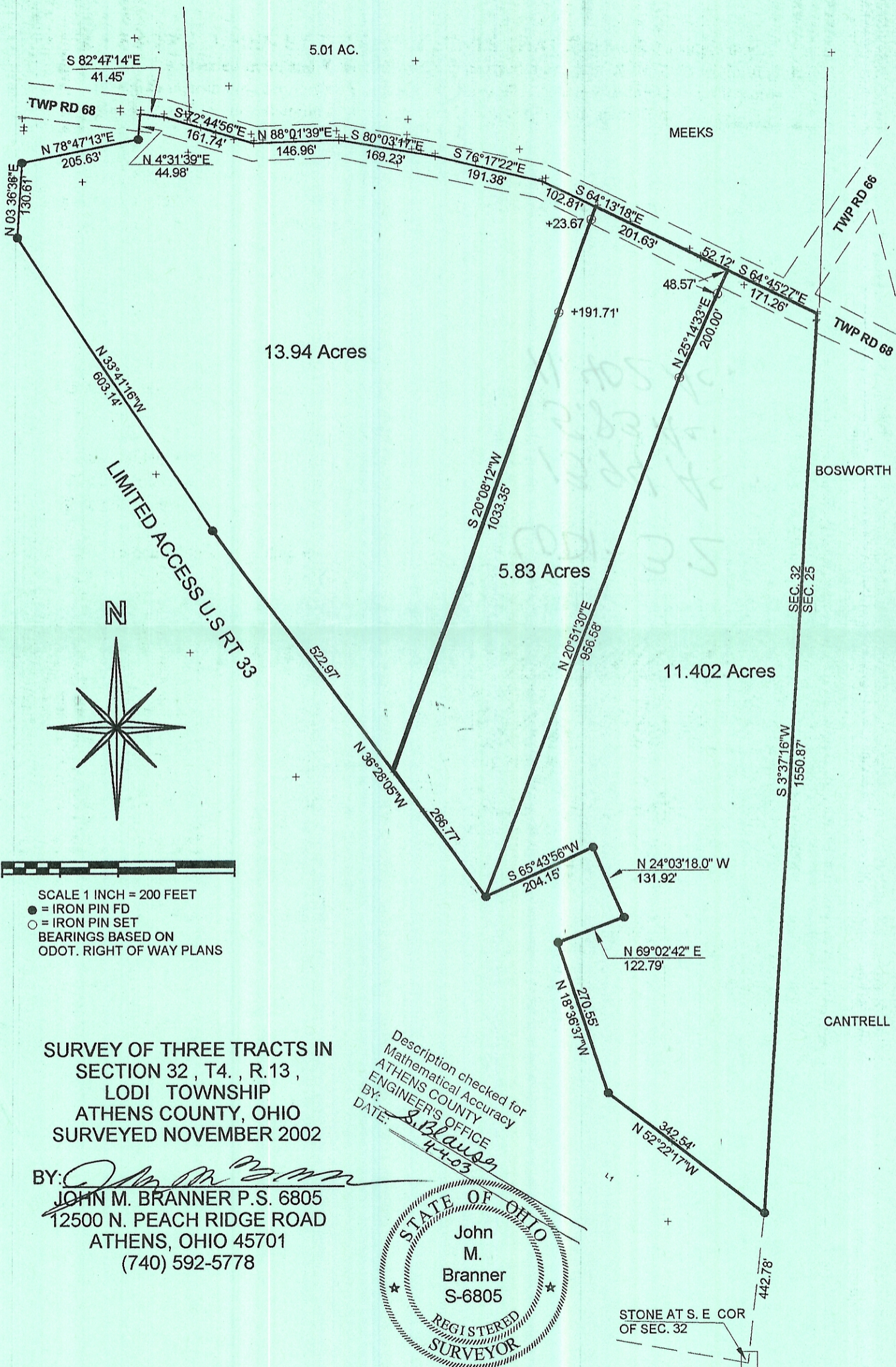
Thence, leaving said road, South 20 degrees 8 minutes 12 seconds West, a distance of 1033.35 feet to the point of beginning, passing iron pins set at 23.67 feet and 191.71 feet, describing a tract containing 13.94 acres.

Subject to all easements and rights of way.

Based on a field survey completed March 2003 by John M. Branner, P.S. 6508.

Description checked for
Mathematical Accuracy
ATHENS COUNTY
ENGINEER'S OFFICE
BY: S. Blaus
DATE: 4-4-03





S 82°47'14"E
41.45'

TWP RD 68

N 78°47'13"E
205.63'

N 4°31'39"E
44.98'

S 72°44'56"E
161.74'

N 88°01'39"E
146.96'

S 80°03'17"E
169.23'

S 76°17'22"E
191.38'

N 03°36'38"E
130.61'

5.01 AC.

MEEKS

13.94 Acres

LIMITED ACCESS U.S. RT 33

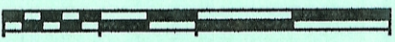
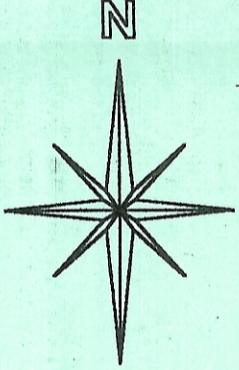
5.83 Acres

11.402 Acres

BOSWORTH

SEC. 32
SEC. 25

CANTRELL

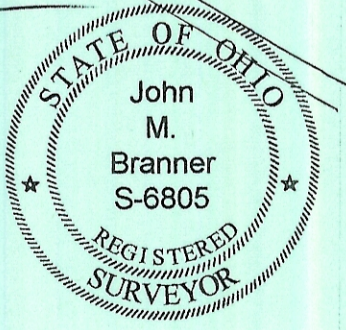


SCALE 1 INCH = 200 FEET
● = IRON PIN FD
○ = IRON PIN SET
BEARINGS BASED ON
ODOT. RIGHT OF WAY PLANS

SURVEY OF THREE TRACTS IN
SECTION 32, T4., R.13,
LODI TOWNSHIP
ATHENS COUNTY, OHIO
SURVEYED NOVEMBER 2002

BY: *John M. Branner*
JOHN M. BRANNER P.S. 6805
12500 N. PEACH RIDGE ROAD
ATHENS, OHIO 45701
(740) 592-5778

Description checked for
Mathematical Accuracy
ATHENS COUNTY
ENGINEER'S OFFICE
BY: *S. Blaus*
DATE: *4-4-03*



STONE AT S. E. COR
OF SEC. 32