

Branner Surveying
12500 N. Peach Ridge
Athens, Ohio

Situated in Section 32, T.4, R.13, Lodi Township, Athens County, Ohio and being more particularly described as follows:

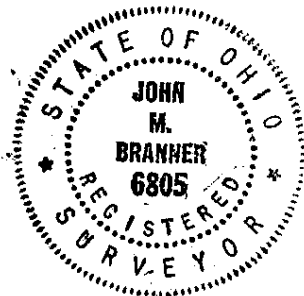
Commencing at a stone in the southeast corner of Section 32, Lodi Township thence, South 3 degrees 37 minutes 16 seconds West, a distance of 442.78 feet,
Thence, North 52 degrees 22 minutes 17 seconds West, a distance of 342.54 feet to an iron pin found,
Thence, North 18 degrees 36 minutes 37 seconds West, a distance of 270.55 feet to an iron pin found,
Thence, North 69 degrees 2 minutes 42 seconds East, a distance of 122.79 feet to an iron pin found,
Thence, North 24 degrees 3 minutes 18 seconds West, a distance of 131.92 feet to an iron pin found,
Thence, South 65 degrees 43 minutes 56 seconds West, a distance of 204.15 feet to an iron pin found, the *point of beginning*,

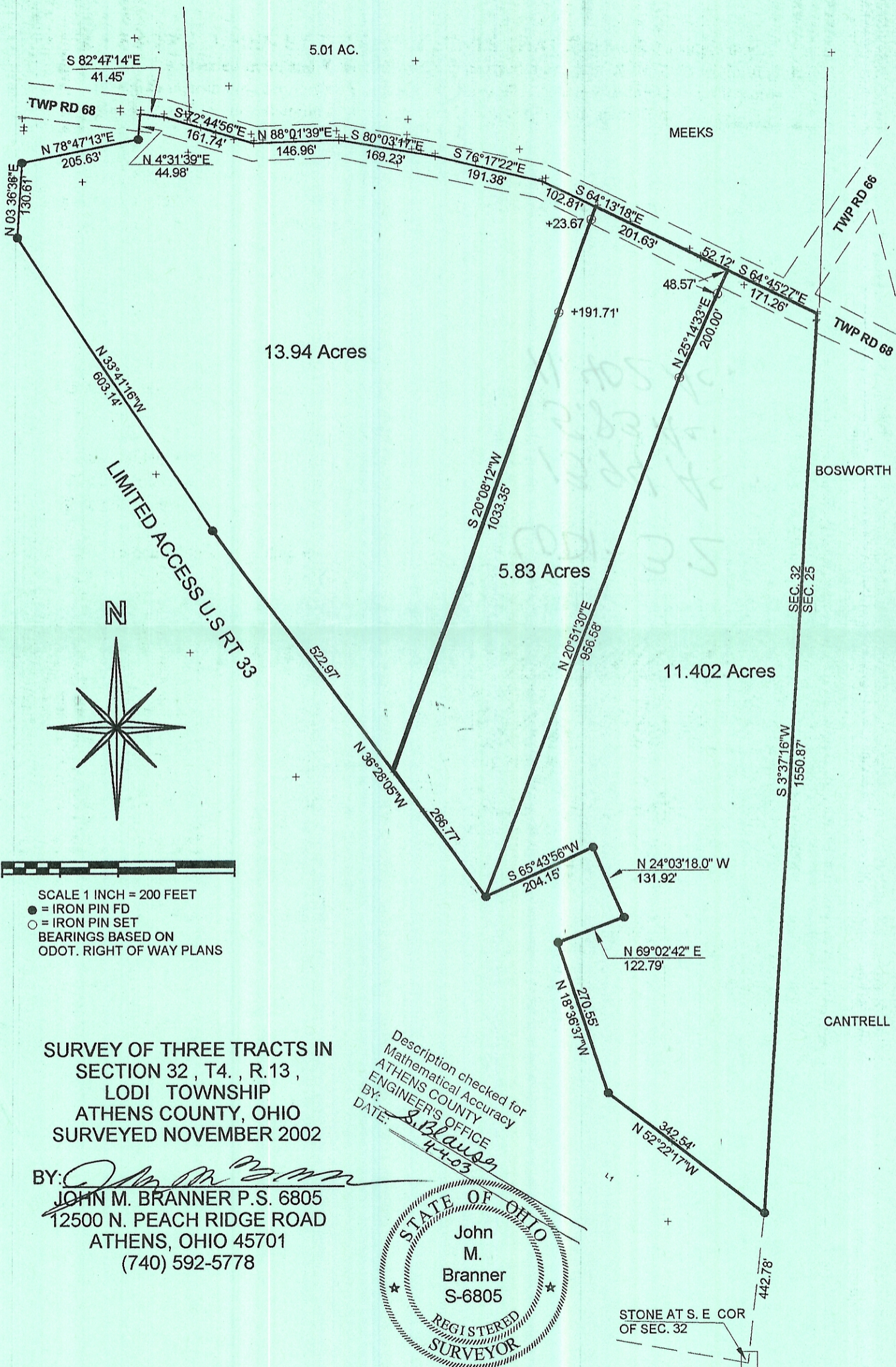
Thence, North 36 degrees 28 minutes 5 seconds West, a distance of 266.77 feet to a point,
Thence, North 20 degrees 8 minutes 12 seconds East, a distance of 1033.35 feet to point in Township Road 68, passing iron pins set at 841.64 feet and 1009.68 feet,
Thence, following said road, South 64 degrees 13 minutes 18 seconds East, a distance of 201.63 feet to a point,
Thence, South 64 degrees 45 minutes 27 seconds East, 52.12 feet;
Thence, leaving said road, South 25 degrees 14 minutes 33 seconds West, a distance of 200.00 feet to an iron pin set, passing an iron pin set at 48.57 feet,
Thence, South 20 degrees 51 minutes 30 seconds West, a distance of 956.58 feet to the point of beginning, describing a tract containing 5.83 acres.

Subject to all easements and rights of way.

Based on a field survey completed March 2003 by John M. Branner, P.S. 6508.

Description checked for
Mathematical Accuracy
ATHENS COUNTY
ENGINEER'S OFFICE
BY: L. Blaus
DATE: 4-4-03

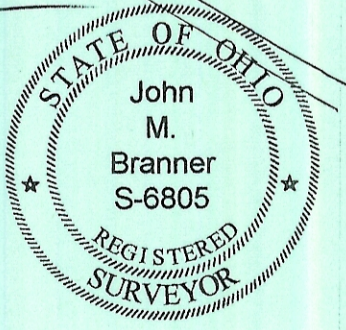




SURVEY OF THREE TRACTS IN
SECTION 32, T4., R.13,
LODI TOWNSHIP
ATHENS COUNTY, OHIO
SURVEYED NOVEMBER 2002

BY: *John M. Branner*
JOHN M. BRANNER P.S. 6805
12500 N. PEACH RIDGE ROAD
ATHENS, OHIO 45701
(740) 592-5778

Description checked for
Mathematical Accuracy
ATHENS COUNTY
ENGINEER'S OFFICE
BY: *S. Blaus*
DATE: *4-4-03*



STONE AT S. E. COR
OF SEC. 32