

Calvin & Jamie Jordan  
363-1234 OR

Delbert Marks  
116-389 OR

Plat of Survey of 0.186 Acres  
Situated in Section 4, Town 4, Range 13,  
Lodi Township, Athens County, Ohio  
Being the Bishop Cemetery Lot  
Surveyed June 2005 for:  
Lodi Township Trustees

*Charles T. Newman*  
Charles T. Newman

Delbert Marks  
116-389 OR

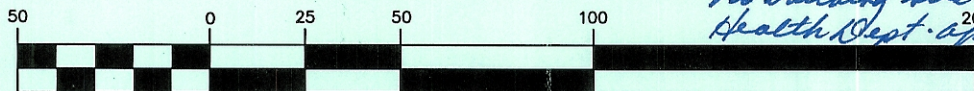
LINE TABLE		
LINE	LENGTH	BEARING
L1	26.41	N61°52'17"W

- ▲ = Fence Post
- = Iron Pin Found
- = Iron Pin Set

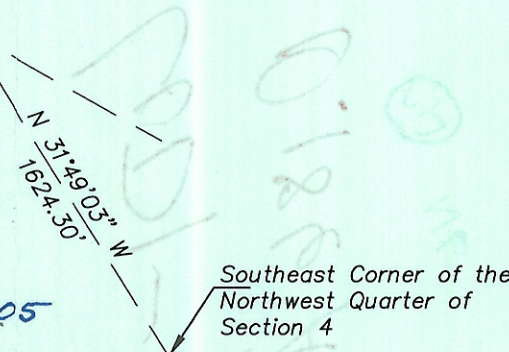
"Approved by the Athens  
County Regional Planning  
Commission; No plat  
Required"

*Rob Eichenberg* 8-18-05  
Planning Director Date  
*No building site intended.*  
*Health Dept. approval not*  
*required.*

GRAPHIC SCALE

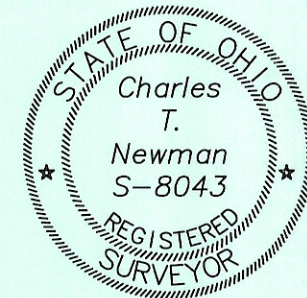


( IN FEET )  
1 inch = 50 ft.



Southeast Corner of the  
Northwest Quarter of  
Section 4

Description Checked for  
Mathematical Accuracy  
Athens County  
ENGINEER'S OFFICE  
BY: *S. Blause*  
DATE: *7-7-05*



Member of Professional Land Surveys, Subdivisions  
Land Surveyors of Ohio

*C. TIM NEWMAN*  
Professional Surveyor

66 Elmwood Place Athens, Ohio 45701  
740-594-1884 FAX 740-594-9413