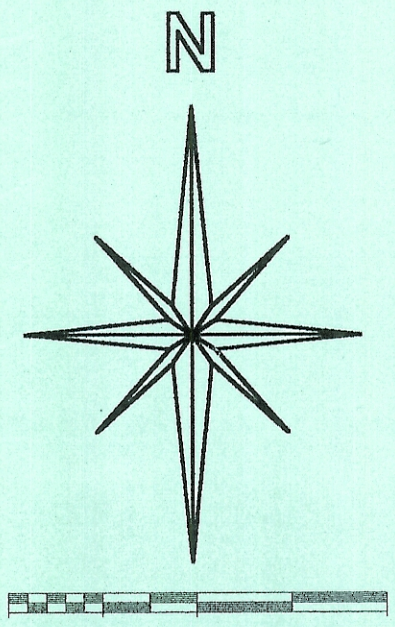
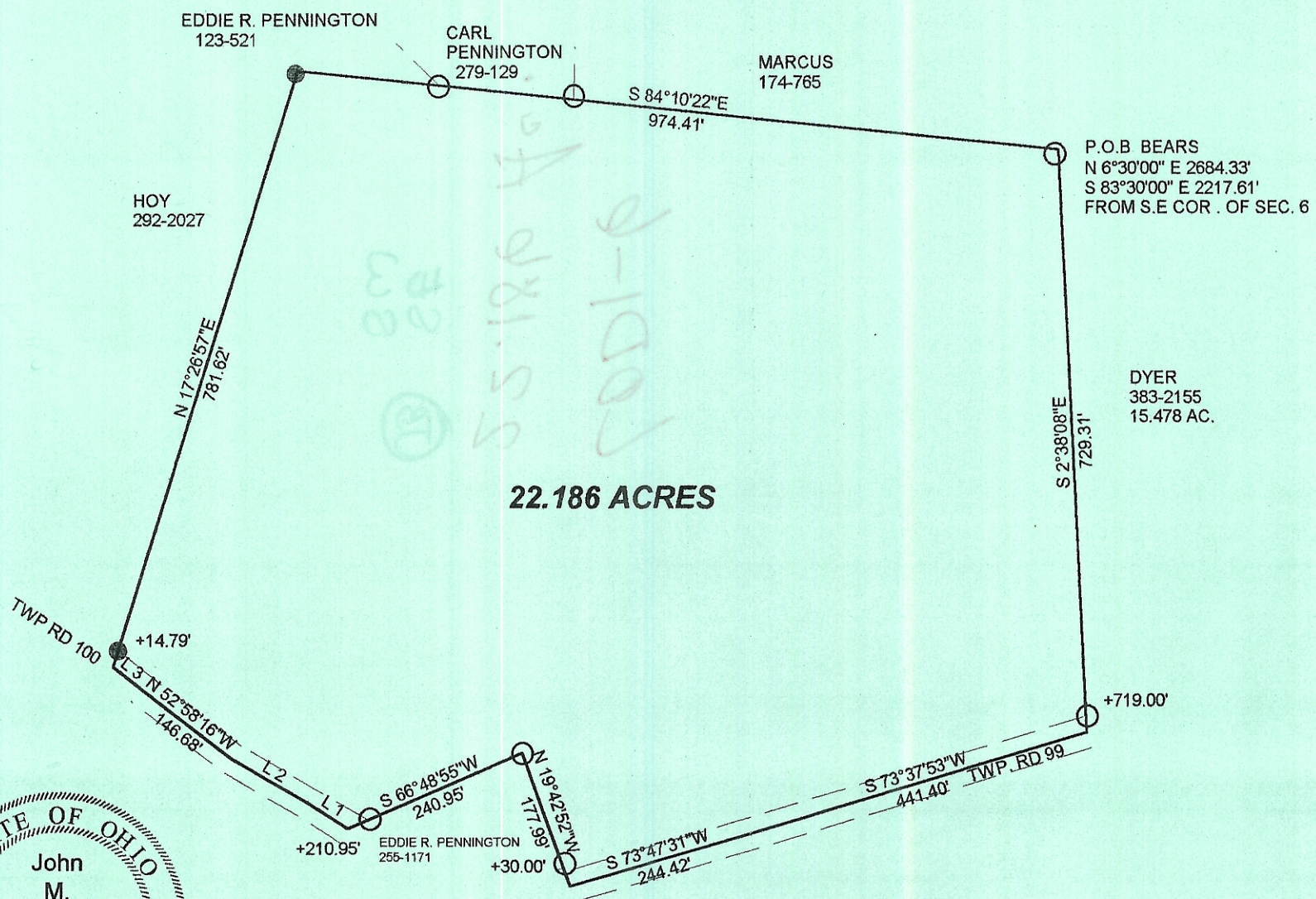


"EXHIBIT B-1"



Line	Bearing	Distance
1	N 57°48'30"W	61.31'
2	N 59°54'26"W	109.68'
3	N 52°34'37"W	42.37'



- SCALE 1 INCH = 200 FEET
- = IRON PIN SET
- = IRON PIN FD.
- ▲ = RAIL ROAD SPIKE SET
- = STONE FOUND
- ASSUMED BEARINGS TO BE USED TO DENOTE INTERIOR ANGLE ONLY

**SURVEY OF 22.186 ACRE TRACT  
 IN SECTION 6 , T.4 , R.13 ,  
 LODI TOWNSHIP  
 ATHENS COUNTY, OHIO  
 SURVEYED AUGUST. 2005**

Description Checked for  
 Mathematical Accuracy  
 Athens County  
 ENGINEER'S OFFICE  
 BY: *J. Blauas*  
 DATE: *8-30-05*

BY: *John M. Branner*  
**JOHN M. BRANNER P.S. 6805  
 12500 N. PEACH RIDGE ROAD  
 ATHENS, OHIO 45701  
 (740) 592-5778**