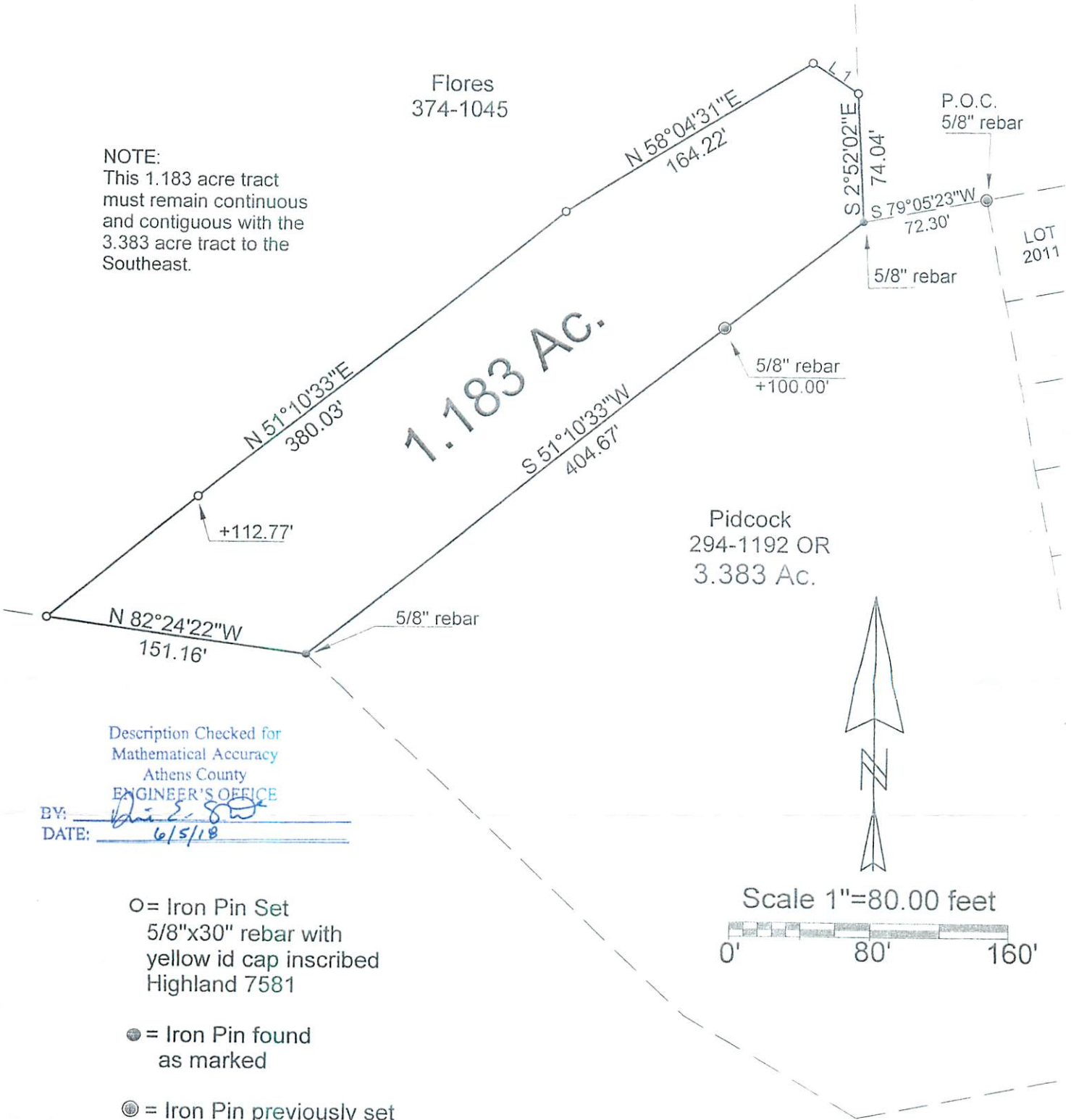




NOTE:  
This 1.183 acre tract  
must remain continuous  
and contiguous with the  
3.383 acre tract to the  
Southeast.



Description Checked for  
Mathematical Accuracy  
Athens County  
ENGINEER'S OFFICE

BY: [Signature]  
DATE: 6/5/18

O = Iron Pin Set  
5/8"x30" rebar with  
yellow id cap inscribed  
Highland 7581

● = Iron Pin found  
as marked

⊙ = Iron Pin previously set  
as marked

Scale 1"=80.00 feet

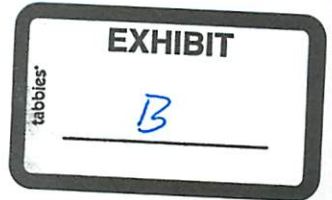


Doctors OhioHealth Corp.  
279-343 OR

Basis of Bearing  
Assumed

References  
Surveys  
Tax Plats  
Deeds

Line	Bearing	Distance
1	S 56°07'16"E	31.25'



PLAT OF SURVEY OF A 1.183 Ac. TRACT

SURVEYED FOR PIDCOCK

SUBDIVISION RL-650

TOWNSHIP YORIK SECTION 30 TOWN 12 RANGE 15

CORPORATION NELSONVILLE COUNTY ATHENS STATE OHIO

SCALE 1"= 80' DATE JUNE, 2018

Kenneth E. Highland  
80 Fayette St.  
Nelsonville, Ohio 45764  
740-753-1264



[Signature]  
Kenneth E. Highland S. 7581