

BRANNER SURVEYING

MEMBER PROFESSIONAL LAND SURVEYORS OF OHIO

12500 N. PEACH RIDGE ROAD
ATHENS, OHIO 45701

JOHN M. BRANNER
Registered Land Surveyor

TELEPHONE
(614) 592-6778

DESCRIPTION OF A 34.29 ACRE TRACT

Situated in Section 13, T.6, R.12, Rome Township, Athens County, Ohio and being more particularly described as follows:

Beginning at a stone at the South-east corner of Section 13,

thence North 88 degrees 16 minutes 51 seconds West, a distance of 1762.89 feet to an iron pin found at the South-east corner of a 1.05 acre tract (Vol. 349, Page 795);

thence, along the East-line of said tract, North 16 degrees 17 minutes 38 seconds West, a distance of 266.74 feet to a point in County Road 53, passing an iron pin found at 246.14 feet;

thence, along said road the following bearings and distances:

North 69 degrees 13 minutes 57 seconds East, a distance of 93.60 feet;

North 75 degrees 56 minutes 24 seconds East, a distance of 353.28 feet;

North 64 degrees 46 minutes 23 seconds East, a distance of 137.73 feet;

North 52 degrees 26 minutes 24 seconds East, a distance of 644.04 feet;

North 47 degrees 28 minutes 48 seconds East, a distance of 240.84 feet;

North 41 degrees 55 minutes 41 seconds East, a distance of 221.16 feet;

North 44 degrees 16 minutes 11 seconds East, a distance of 303.79 feet;

thence, leaving said road, South 88 degrees 15 minutes 30 seconds East, a distance of 290.04 feet to an iron pin, passing an iron pin set at 47.5 feet

thence South 2 degrees 15 minutes 11 seconds West, a distance of 1416.37 feet to the POINT OF BEGINNING; said described tract containing 34.291 acres.

Subject to all easements and rights of way of record.



John M. Branner
JOHN M. BRANNER P.S. 6805

Description checked for
Mathematical Accuracy
ATHENS COUNTY
ENGINEER'S OFFICE
BY: S. Blaise
DATE: 4-19-94

12
Rom #13

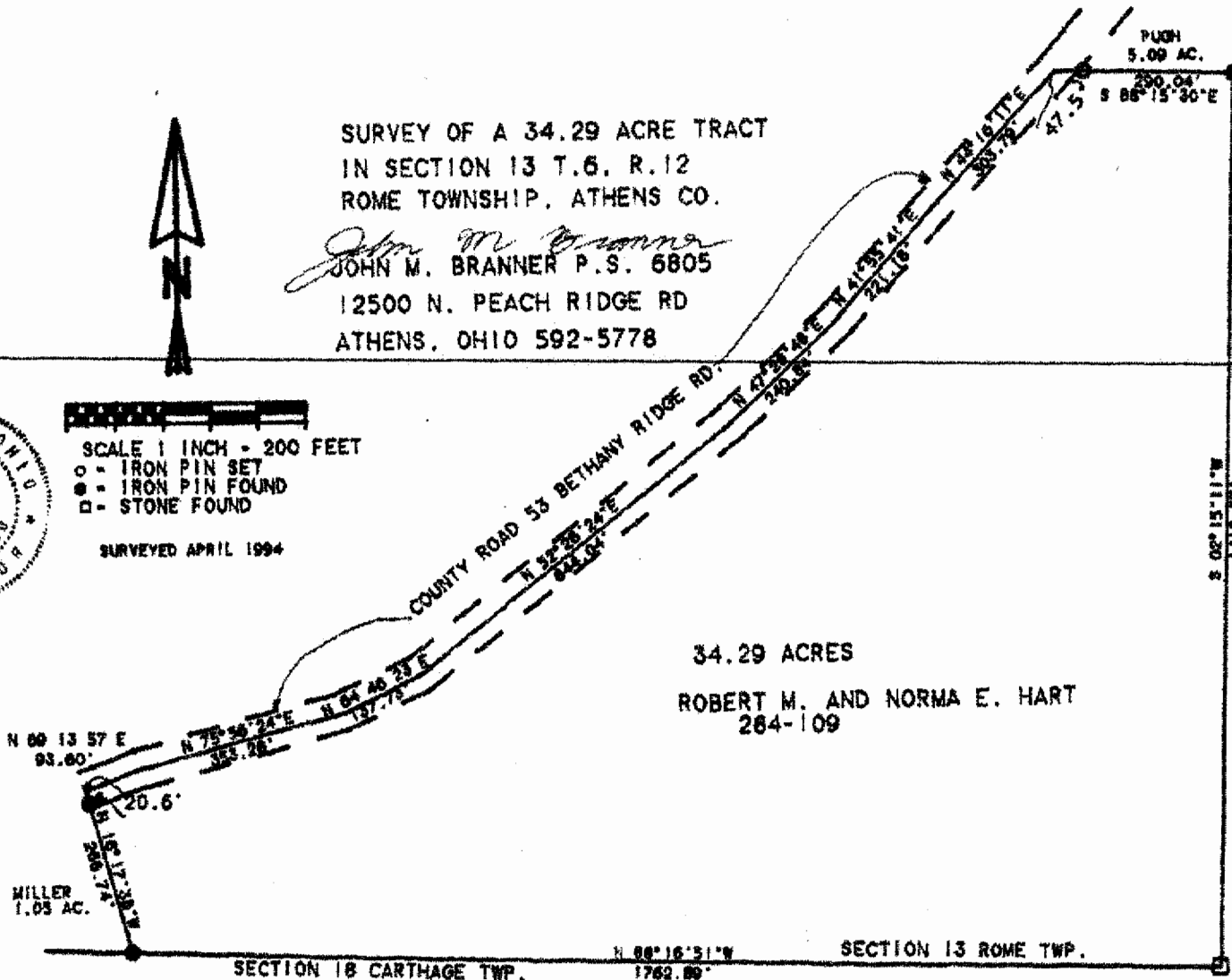


SURVEY OF A 34.29 ACRE TRACT
 IN SECTION 13 T.6, R.12
 ROME TOWNSHIP, ATHENS CO.

John M. Branner
 JOHN M. BRANNER P.S. 6805
 12500 N. PEACH RIDGE RD
 ATHENS, OHIO 592-5778



SCALE 1 INCH = 200 FEET
 ○ - IRON PIN SET
 ● - IRON PIN FOUND
 □ - STONE FOUND
 SURVEYED APRIL 1994



34.29 ACRES
 ROBERT M. AND NORMA E. HART
 264-109

14