

SURVEY DESCRIPTION OF AN 6.854 ACRE TRACT ON STATE ROUTE 329

Situated in Rome Township, Athens County, Ohio; being part of Section 18, Township 6, Range 12; and being more particularly described as follows:

Commencing for reference at a 5/8" iron pin found at the Northwest corner of said Section 18; thence with the North line of said Section 18 North 89 degrees 22 minutes 39 seconds East a distance of 795.75 feet to a 5/8" iron pin set and passing a 5/8" iron pin found at a distance of 54.74 feet; thence leaving the North line of Section 18 South 40 degrees 30 minutes 31 seconds West a distance of 770.26 feet to a 5/8" iron pin set and passing a 5/8" iron pin set at a distance of 167.63 feet; thence South 0 degrees 00 minutes 00 seconds West a distance of 389.08 feet to a 5/8" iron pin set; thence North 83 degrees 46 minutes 11 seconds East a distance of 1370.96 feet to a PK nail set in the center of State Route 329, passing a 5/8" iron pin set at a distance of 1340.96 feet, and being the point of **Beginning** of the tract of land to be described;

thence leaving the center of State Route 329 and continuing North 83 degrees 46 minutes 11 seconds East a distance of 464.71 feet to a point in the center of Federal Creek and passing a 5/8" iron pin set at a distance of 20.00 feet;

thence with the center of Federal Creek the following three bearings and distances:

- 1) South 74 degrees 51 minutes 40 seconds East a distance of 214.41 feet to a point;
- 2) South 51 degrees 21 minutes 21 seconds East a distance of 219.54 feet to a point;
- 3) South 50 degrees 39 minutes 34 seconds East a distance of 317.24 feet to a point;

thence leaving the center of Federal Creek South 0 degrees 21 minutes 08 seconds East a distance of 129.27 feet to a PK nail set in the center of State Route 329 and passing a 5/8" iron pin set at a distance of 68.85 feet;

thence with the center of State Route 329 the following sixteen bearings and distances:

- 1) North 79 degrees 18 minutes 03 seconds West a distance of 7.56 feet to a PK nail set;
 - 2) North 79 degrees 36 minutes 08 seconds West a distance of 120.80 feet to a PK nail set;
 - 3) North 80 degrees 30 minutes 04 seconds West a distance of 149.91 feet to a PK nail set;
 - 4) North 80 degrees 28 minutes 12 seconds West a distance of 138.77 feet to a PK nail set;
 - 5) North 78 degrees 25 minutes 02 seconds West a distance of 63.11 feet to a PK nail set;
 - 6) North 74 degrees 45 minutes 10 seconds West a distance of 50.18 feet to a PK nail set;
 - 7) North 71 degrees 21 minutes 59 seconds West a distance of 75.81 feet to a PK nail set;
 - 8) North 68 degrees 49 minutes 42 seconds West a distance of 74.98 feet to a PK nail set;
 - 9) North 65 degrees 31 minutes 40 seconds West a distance of 70.88 feet to a PK nail set;
 - 10) North 61 degrees 38 minutes 20 seconds West a distance of 70.54 feet to a PK nail set;
 - 11) North 58 degrees 45 minutes 16 seconds West a distance of 83.83 feet to a PK nail set;
 - 12) North 54 degrees 47 minutes 03 seconds West a distance of 71.74 feet to a PK nail set;
 - 13) North 50 degrees 46 minutes 17 seconds West a distance of 66.74 feet to a PK nail set;
 - 14) North 45 degrees 30 minutes 22 seconds West a distance of 62.73 feet to a PK nail set;
 - 15) North 39 degrees 58 minutes 22 seconds West a distance of 60.72 feet to a PK nail set;
 - 16) North 35 degrees 05 minutes 42 seconds West a distance of 54.41 feet to the point of beginning,
- containing 6.854 acres more or less, and subject to the public easement of State Route 329 and any other public or private easements of record.

The above 6.854 acre survey is intended to describe part of the 341.034 acre surveyed tract as deeded to Larry P. Gerstner, et. al., deed reference Volume OR263, Page 1295, Athens County Recorder's Office. This survey was based upon information obtained from tax maps, deed descriptions, previous surveys, existing monumentation, and an existing public road. The reference bearing for this survey is the West line of Section 18 as North 0 degrees 00 minutes 00 seconds East. Bearings are based upon an assumed meridian and are to denote angles only. All iron pins set by this survey are 5/8" by 30" and are capped by a 1-1/4" plastic identification cap stamped LPG-6344. The above described property was surveyed by Larry P. Gerstner, Ohio Registered Surveyor No. 6344, on February 22, 1998, July 13, 1998 and August 10, 1998.



Description checked for
Mathematical Accuracy
ATHENS COUNTY
ENGINEER'S OFFICE
BY: *S. Blaise*
DATE: *12-3-02*

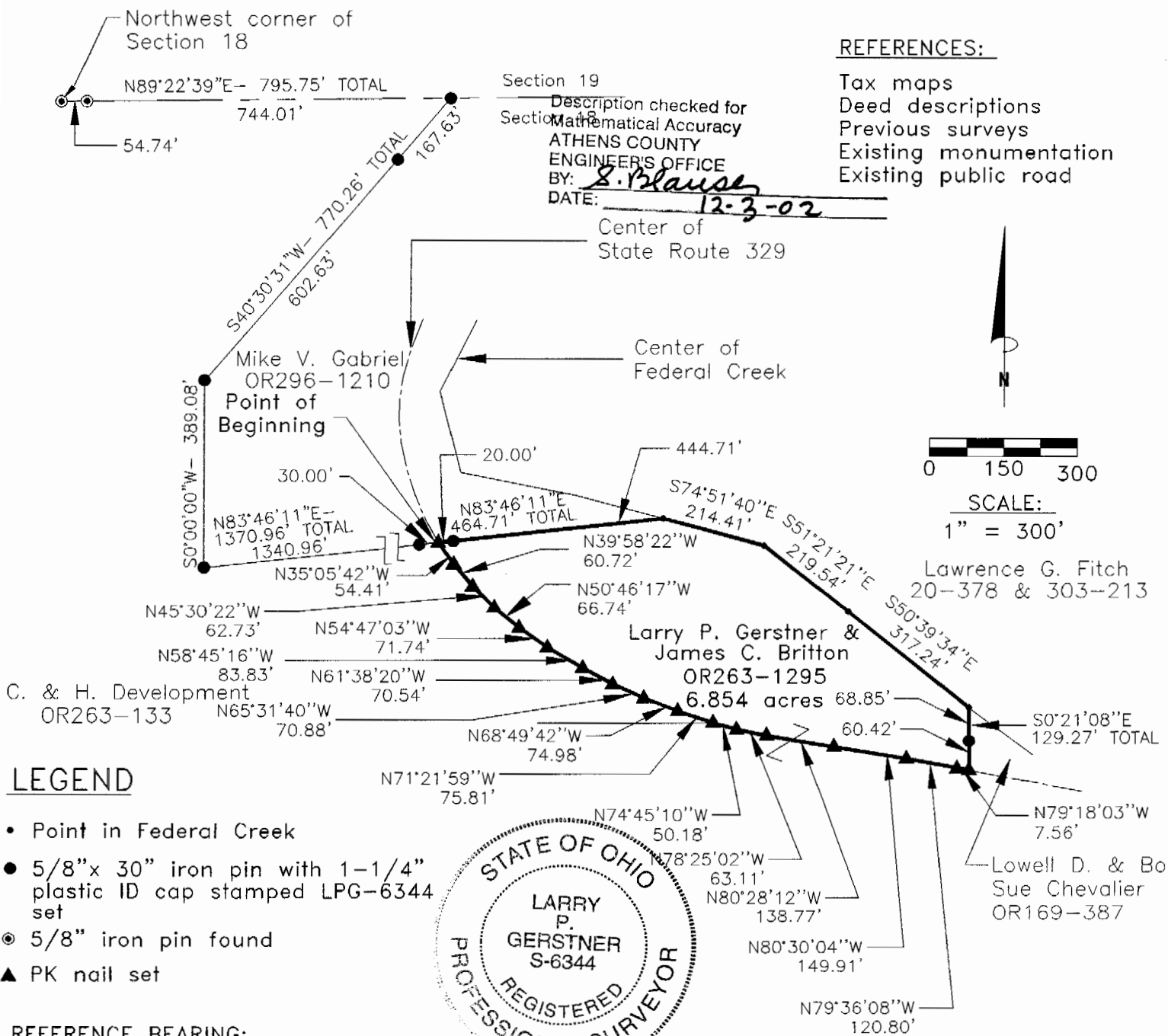
Larry P. Gerstner

20m#18

Survey by:
Larry P. Gerstner - Engineering and Surveying
9 East Second Street, Suite A, Logan, Ohio 43138 385-4260

PLAT OF A 6.854 ACRE TRACT ON STATE ROUTE 329

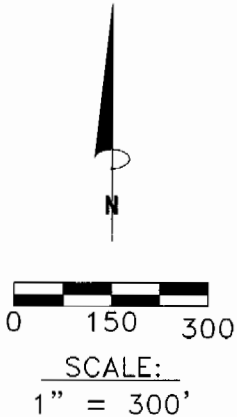
Situated in Rome Township, Athens County, Ohio; being part of Section 18, Township 6, Range 12.



REFERENCES:

- Tax maps
- Deed descriptions
- Previous surveys
- Existing monumentation
- Existing public road

Description checked for
 Mathematical Accuracy
 ATHENS COUNTY
 ENGINEER'S OFFICE
 BY: S. Blausen
 DATE: 12-3-02



Lawrence G. Fitch
 20-378 & 303-213

LEGEND

- Point in Federal Creek
- 5/8"x 30" iron pin with 1-1/4" plastic ID cap stamped LPG-6344 set
- ⊙ 5/8" iron pin found
- ▲ PK nail set

REFERENCE BEARING:

The West line of Section 18 as North 0 degrees 00 minutes 00 seconds East. Bearings are based upon an assumed meridian and are to denote angles only.

CERTIFICATION:

I hereby certify that an actual survey was made under my supervision of the premises shown hereon on the 22nd day of February, 1998, the 13th day of July, 1998 and the 10th day of August, 1998 and that the plat is a correct representation of the premises as described by said survey.

Larry P. Gerstner
 Registered Surveyor No. 6344

Survey by: Larry P. Gerstner - Engineering and Surveying
 9 East Second Street, Suite A, Logan, Ohio 43138
 (740) 385-4260

2