

SURVEY DESCRIPTION OF A 5.008 ACRE TRACT ON STATE ROUTE 329

Situated in Rome Township, Athens County, Ohio; being part of Section 18, Township 6, Range 12; and being more particularly described as follows:

Commencing for reference at a 5/8" iron pin found at the Northwest corner of said Section 18; thence South 51 degrees 20 minutes 47 seconds East a distance of 3202.90 feet to a 5/8" iron pin previously set; thence South 16 degrees 03 minutes 15 seconds West a distance of 1008.26 feet to a point and being the point of **Beginning** of the tract of land to be described;

thence South 73 degrees 56 minutes 45 seconds East a distance of 837.80 feet to a 5/8" iron pin set and passing a 5/8" iron pin previously set at a distance of 2.01 feet;

thence South 39 degrees 19 minutes 38 seconds East a distance of 124.96 feet to a 5/8" iron pin set;

thence South 67 degrees 01 minute 43 seconds East a distance of 62.83 feet to a MAG nail set in the center of State Route 329;

thence South 65 degrees 13 minutes 07 seconds East a distance of 99.44 feet to a point in the center of Federal Creek and passing a 5/8" iron pin set at a distance of 52.87 feet;

thence with the center of Federal Creek the following two bearings and distances:

1) South 10 degrees 31 minutes 40 seconds West a distance of 127.30 feet to a point;

2) South 1 degree 55 minutes 55 seconds West a distance of 7.31 feet to a point;

thence leaving the center of Federal Creek North 72 degrees 26 minutes 00 seconds West a distance of 1115.73 feet to a 5/8" iron pin previously set, passing a MAG nail set in the center of State Route 329 at a distance of 72.49 feet, and passing 5/8" iron pins set at distances of 47.49 feet, 97.49 feet, and 215.72 feet;

thence North 16 degrees 03 minutes 15 seconds East a distance of 197.99 feet to the point of beginning, containing 5.008 acres more or less, and subject to the public easement of State Route 329 and any other public or private easements of record.

The above 5.008 acre survey is intended to describe part of the 341.034 acre surveyed tract as deeded to Larry P. Gerstner and James C. Britton by deed reference Volume OR263, Page 1295, Athens County Recorder's Office. This survey was based upon information obtained from tax maps, deed descriptions, previous surveys, existing monumentation, and an existing public road. The reference bearing for this survey is the West line of Section 18 as North 0 degrees 00 minutes 00 seconds East. Bearings are based upon an assumed meridian and are to denote angles only. All iron pins set by this survey or previously set are 5/8" by 30" and are capped by a 1-1/4" plastic identification cap stamped LPG-6344. The above described property was surveyed by Larry P. Gerstner, Ohio Registered Surveyor No. 6344, on February 1, 2000.



Larry P. Gerstner

Description checked for
Mathematical Accuracy
ATHENS COUNTY
ENGINEER'S OFFICE
BY: *S. Blausen*
DATE: 2-3-2000

Survey by:

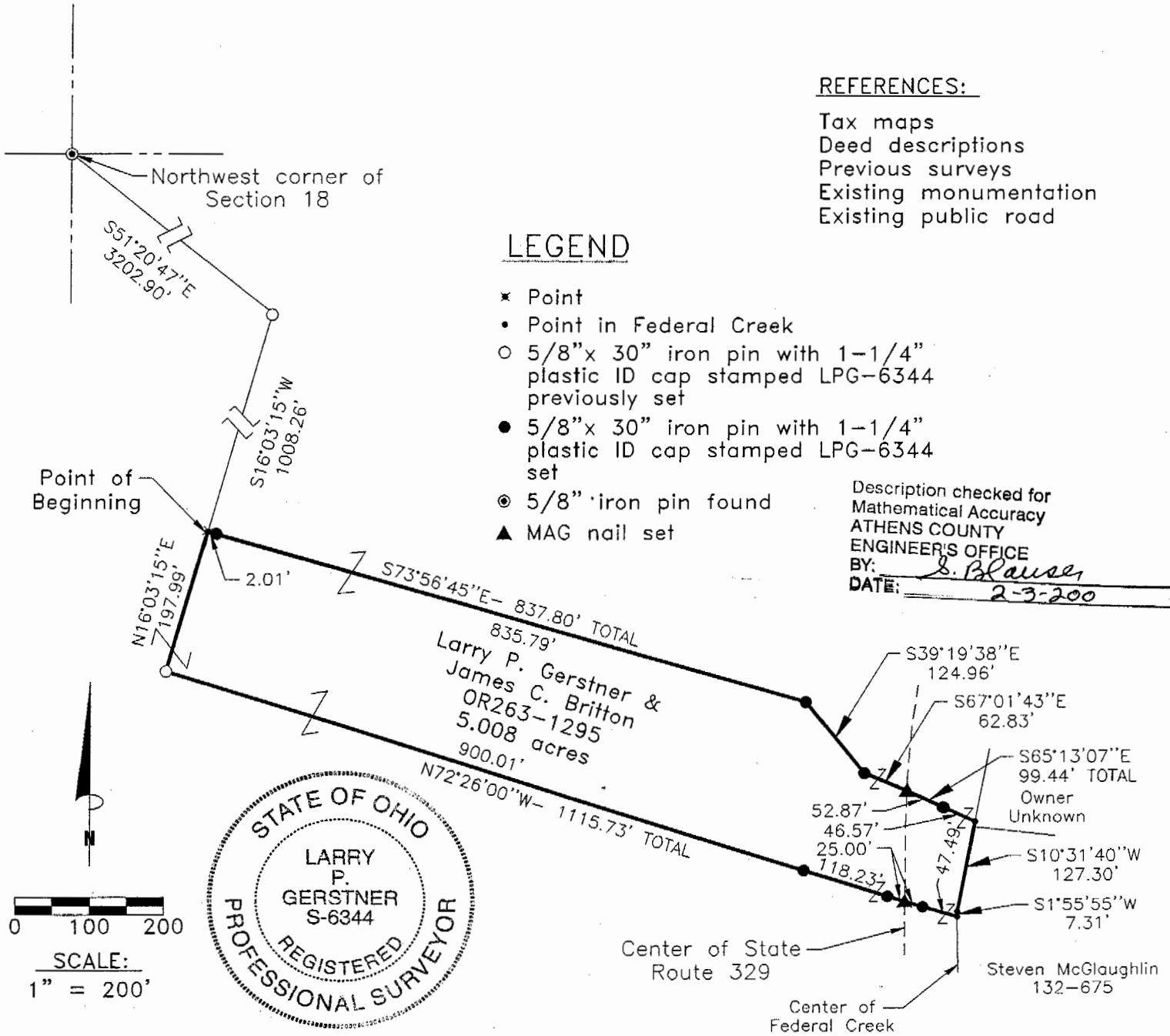
Larry P. Gerstner - Engineering and Surveying
9 East Second Street, Suite A, Logan, Ohio 43138 385-4260

000029

Rem #18

PLAT OF A 5.008 ACRE TRACT ON STATE ROUTE 329

Situated in Rome Township, Athens County, Ohio; being part of Section 18, Township 6, Range 12.



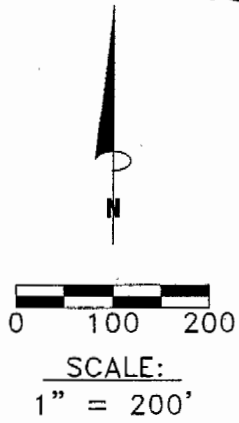
REFERENCES:

- Tax maps
- Deed descriptions
- Previous surveys
- Existing monumentation
- Existing public road

LEGEND

- × Point
- Point in Federal Creek
- 5/8" x 30" iron pin with 1-1/4" plastic ID cap stamped LPG-6344 previously set
- 5/8" x 30" iron pin with 1-1/4" plastic ID cap stamped LPG-6344 set
- ⊙ 5/8" iron pin found
- ▲ MAG nail set

Description checked for
Mathematical Accuracy
ATHENS COUNTY
ENGINEER'S OFFICE
BY: S. Blause
DATE: 2-3-200



REFERENCE BEARING:

The West line of Section 18 as North 0 degrees 00 minutes 00 seconds East. Bearings are based upon an assumed meridian and are to denote angles only.

CERTIFICATION:

I hereby certify that an actual survey was made under my supervision of the premises shown hereon on the 1st day of February, 2000 and that the plat is a correct representation of the premises as described by said survey.

Larry P. Gerstner
Registered Surveyor No. 6344

Survey by: Larry P. Gerstner - Engineering and Surveying
9 East Second Street, Suite A, Logan, Ohio 43138
(740) 385-4260

000030