

EXHIBIT

***Sharon Hahn***  
**290.408 ACRES**

Situated in the State of Ohio, County of Athens, Rome Township, Section 14 and 20, Township 6, Range 12, part of Fractions 19, 25, 31, and 7, being all of the tract conveyed to Sharon R. Hahn and recorded in Official Records 457, Page 2620 in the Athens County Recorder's Office, and being more particularly described as follows:

Beginning at a stone (found), said stone being the Northeast corner of said Fraction 19 and being the POINT OF BEGINNING for the said parcel herein described;

Thence, with the East line of said Fraction 19, South 03 degrees 13 minutes 16 seconds West 2038.21 feet to a 5/8 inch rebar (set) at the common corner for the parcel conveyed to James D. and Shirley F. Hayes in Official Record 201, page 108 in the Athens County Recorders;

Thence, with said Hayes Line, North 66 degrees 25 minutes 44 seconds West 3248.77 feet to a point in the middle of the Hocking River passing a 5/8 inch rebar (set) at 2453.77 feet and 3073.77 feet.

Thence, with the center of the Hocking River the following twenty two calls:

North 85 degrees 25 minutes 26 seconds East 241.45 feet;  
South 80 degrees 20 minutes 31 seconds East 566.53 feet;  
North 53 degrees 28 minutes 02 seconds East 283.04 feet;  
North 17 degrees 46 minutes 23 seconds East 403.78 feet;  
North 12 degrees 41 minutes 32 seconds East 533.43 feet;  
North 01 degrees 02 minutes 01 seconds East 620.64 feet;  
North 10 degrees 56 minutes 03 seconds West 698.16 feet;  
North 15 degrees 31 minutes 20 seconds West 328.44 feet;  
North 29 degrees 54 minutes 38 seconds West 570.48 feet;  
North 07 degrees 27 minutes 31 seconds West 202.58 feet;  
North 02 degrees 18 minutes 46 seconds East 285.37 feet;  
North 20 degrees 25 minutes 27 seconds East 235.11 feet;  
North 43 degrees 12 minutes 07 seconds East 218.69 feet;  
North 67 degrees 00 minutes 01 seconds East 341.88 feet;  
North 82 degrees 54 minutes 43 seconds East 335.95 feet;  
South 80 degrees 45 minutes 10 seconds East 353.34 feet;  
South 58 degrees 02 minutes 00 seconds East 301.83 feet;  
South 45 degrees 35 minutes 25 seconds East 1443.97 feet;  
South 35 degrees 25 minutes 14 seconds East 263.06 feet;  
South 26 degrees 47 minutes 30 seconds East 641.28 feet;  
South 73 degrees 55 minutes 27 seconds East 275.63 feet;

North 58 degrees 39 minutes 54 seconds East 1127.37 feet to the northwest corner of a 6.00 acre tract conveyed to Timothy Sheridan in Official Record 207, page 719;

**Sharon Hahn**  
**290.408 ACRES**

Thence, leaving said Hocking River and with the West line of said Sheridan Tract, South 02 degrees 36 minutes 29 minutes West 2025.88 feet to a stone (found), passing a 5/8 inch rebar (found) at 293.17 feet, said stone being on the South line of said Fraction 7;

Thence, with the South line of said Fraction 7, North 86 degrees 28 minutes 59 seconds West 1763.06 feet to the **POINT OF BEGINNING**, containing 296.469 acres, from Auditor's Permanent Parcel No. K010010040600, K010010041500, K010010041600. Excepting from the above description

1) Railroad exception containing 4.560 acres

2) Bowers-Hawk Addition 1.501 acres

Leaving 290.408 acres

**Exception 1)** From the above described tract that portion of the abandon railroad conveyed to James B. Hayes in Official Records 113, page 754 and The Trustees of Rome Township in Official Record 125, page 76 and recorded in the Athens County Recorder's office

Situated in the State of Ohio, County of Athens, Rome Township, Section 14, Township 6, Range 12, part of Fractions 25, and 31, and being more particularly described as follows:

Beginning at a point on the South right of way line of the said abandon railroad and in the middle of the Hocking River, said point being North 53 degrees 23 minutes 58 seconds West 2390.14 feet from a stone (found) at the Northeast corner of Fraction 19;

Thence, with the center of the Hocking River, North 15 degrees 31 minutes 20 seconds West 118.67 feet to the North right of way line;

Thence, with the north right of way line, North 46 degrees 29 minutes 29 seconds East 1952.56 feet to a point in the middle of the Hocking River, passing a 5/8 inch rebar at 167.58 feet and 1830.70 feet;

Thence, with the Hocking River, South 45 degrees 35 minutes 25 seconds East 100.07 feet to a point;

Thence, with the South right of way line South 46 degrees 29 minutes 29 seconds West 2020.09 feet passing a 5/8 inch rebar (set) at 125.49 feet and 1788.62 feet to the point of beginning containing 4.560 acres;

**Exception 2)** The Bowers-Hawk Addition as recorded in Plat Book 10, Page 56 envelope 36A in the Athens County Recorder's Office containing 1.501 acres.

**Total acreage in this description 290.408 acres.**

All 5/8 inch rebar (set) are 30 inches long and have a 1-1/4 inch plastic identification cap stamped "Lockwood, Lanier, Mathias & Noland"

Description prepared from an actual field survey by Lockwood, Lanier, Mathias & Noland, Inc. under the supervision of Richard F. Mathias, P.S. #7798, August, 2011.

Bearings are based on true GPS North.



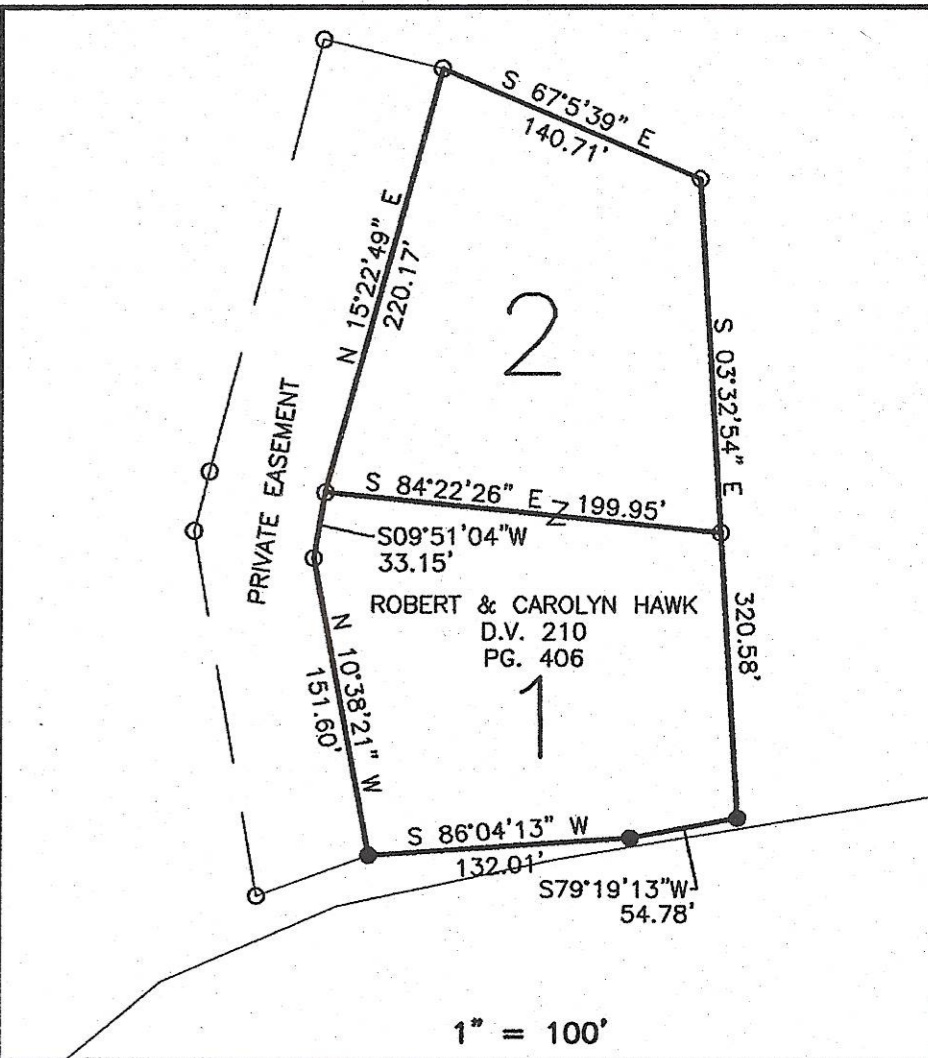
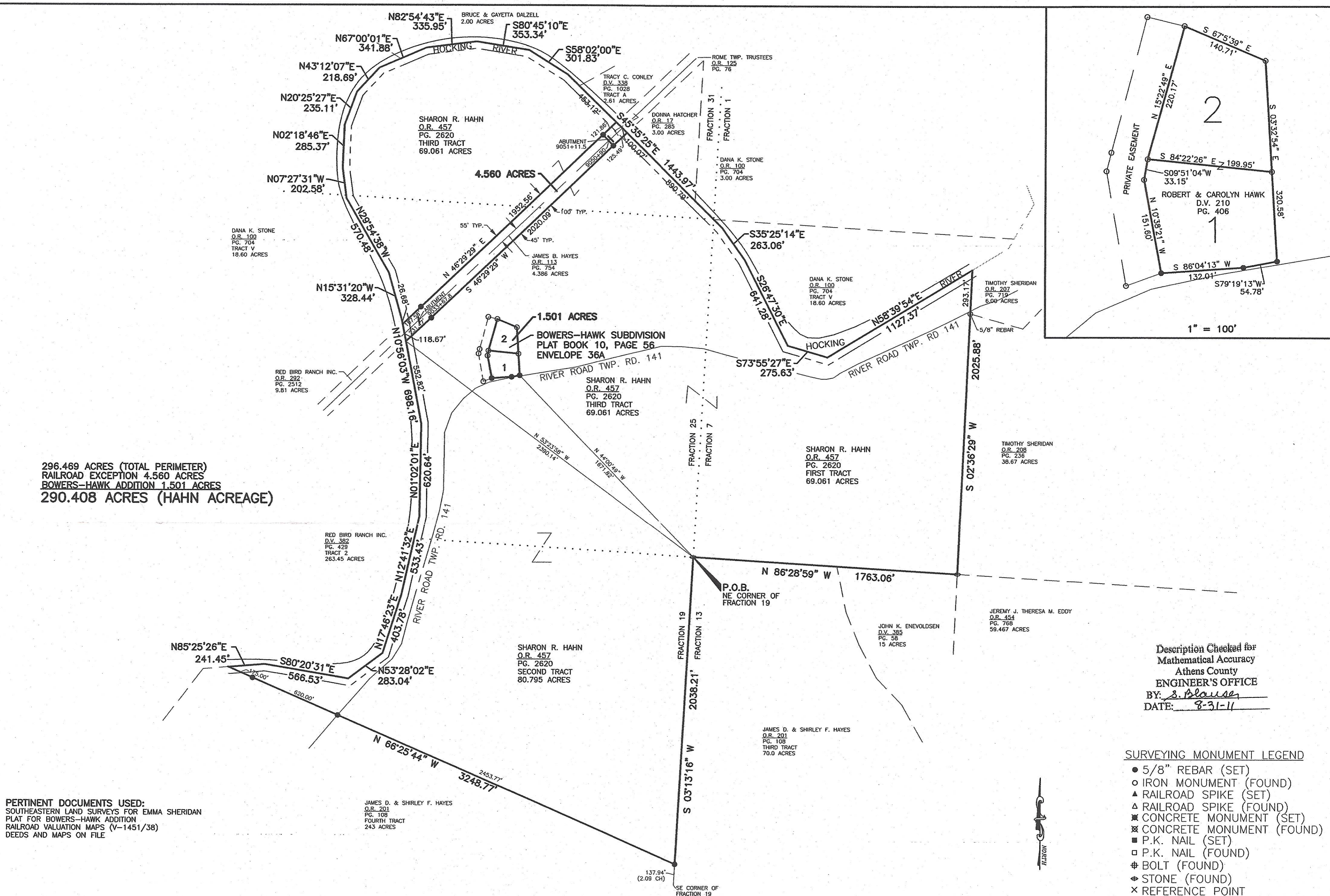
Description Checked for  
Mathematical Accuracy  
Athens County  
ENGINEER'S OFFICE  
BY: S. Blausen  
DATE: 8-31-11

8-30-11  
Date

Description Approved  
Jill A. Thompson  
Athens County Auditor

9/2/11





296.469 ACRES (TOTAL PERIMETER)  
RAILROAD EXCEPTION 4.560 ACRES  
BOWERS-HAWK ADDITION 1.501 ACRES  
290.408 ACRES (HAHN ACREAGE)

Description Checked for  
Mathematical Accuracy  
Athens County  
ENGINEER'S OFFICE  
BY: S. Blouse  
DATE: 8-31-11

- SURVEYING MONUMENT LEGEND**
- 5/8" REBAR (SET)
  - IRON MONUMENT (FOUND)
  - ▲ RAILROAD SPIKE (SET)
  - △ RAILROAD SPIKE (FOUND)
  - ⊠ CONCRETE MONUMENT (SET)
  - ⊞ CONCRETE MONUMENT (FOUND)
  - P.K. NAIL (SET)
  - P.K. NAIL (FOUND)
  - ⊕ BOLT (FOUND)
  - ⊙ STONE (FOUND)
  - × REFERENCE POINT

**PERTINENT DOCUMENTS USED:**  
SOUTHEASTERN LAND SURVEYS FOR EMMA SHERIDAN  
PLAT FOR BOWERS-HAWK ADDITION  
RAILROAD VALUATION MAPS (V-1451/38)  
DEEDS AND MAPS ON FILE

JAMES D. & SHIRLEY F. HAYES  
O.R. 201  
PG. 108  
FOURTH TRACT  
243 ACRES

SHARON R. HAHN  
O.R. 457  
PG. 2620  
SECOND TRACT  
80.795 ACRES

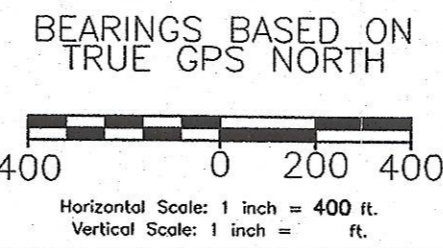
SHARON R. HAHN  
O.R. 457  
PG. 2620  
FIRST TRACT  
69.061 ACRES

JEREMY J. THERESA M. EDDY  
O.R. 454  
PG. 768  
59.467 ACRES

JAMES D. & SHIRLEY F. HAYES  
O.R. 201  
PG. 108  
THIRD TRACT  
70.0 ACRES

**PLAT OF SURVEY  
HAHN PROPERTY**  
SECTION 14 & SECTION 20, TWP., 6, RANGE 12  
PART OF FRACTION 19, 25, 31, & 7  
ROME TWP., ATHENS COUNTY, OHIO  
290.408  
AUGUST, 2011

**PLANS PREPARED FOR:**  
SHARON HAHN  
25272 CLEAR CREEK RD  
ROCKBRIDGE, OH 43149  
740 746-8486



STATE OF OHIO  
RICHARD F.  
PROFESSIONAL SURVEYOR No. 7798  
DATE: 8-30-11

**Lockwood, Lanier,  
Mathias & Noland, Inc.**  
Civil Engineers / Land Surveyors  
2475 Sugar Grove Rd. SE  
Lancaster, Ohio 43130  
(740) 687-5542 · Fax (740) 687-0086

DATE: AUGUST, 2011 No. 1 OF 1