

Description of a 5.31 acre tract

Beginning at a point in Rome Township Road 129, said point being the North-west corner of a 20.00 acre tract as recorded in Vol. 438, Page 1951 of the Official Records of Athens County, said point also bears East a distance of 412.50 feet (deed) and South 08 degrees 42 minutes 32 seconds West a distance of 1652.25 feet (deed) from the North-west corner of Section 25;

Thence, along Rome Twp. Rd. 129,
S 70°35'29" E a distance of 308.75feet;
S 70°34'51" E a distance of 329.79feet;
S 60°53'34" E a distance of 11.33 feet;
thence, leaving said road and along new lines created by this survey:
S 34°08'21" W a distance of 94.72 feet to an iron pin set, passing an iron pin set at 23.30 feet;
Thence, S 23°47'41" W a distance of 195.58feet to an iron pin set;
Thence, S 62°09'39" W a distance of 222.42feet to an iron pin set;
thence N 62°38'03" W a distance of 129.30 feet to an iron pin set;
thence N65°00'05" W a distance of 209.68 feet to a point in the east line of Koker(317-922 O.R.), passing an iron pin set at 173.91 feet;
thence, along an existing fence line and the East lines of (Koker 317-922 O.R.)
N 01°32'05" E a distance of 125.58feet;
thence N 03°05'52" E a distance of 234.16 feet;
thence N 04°21'38" E a distance of 71.78 feet;
which is the point of beginning, having an area of 5.31 acres

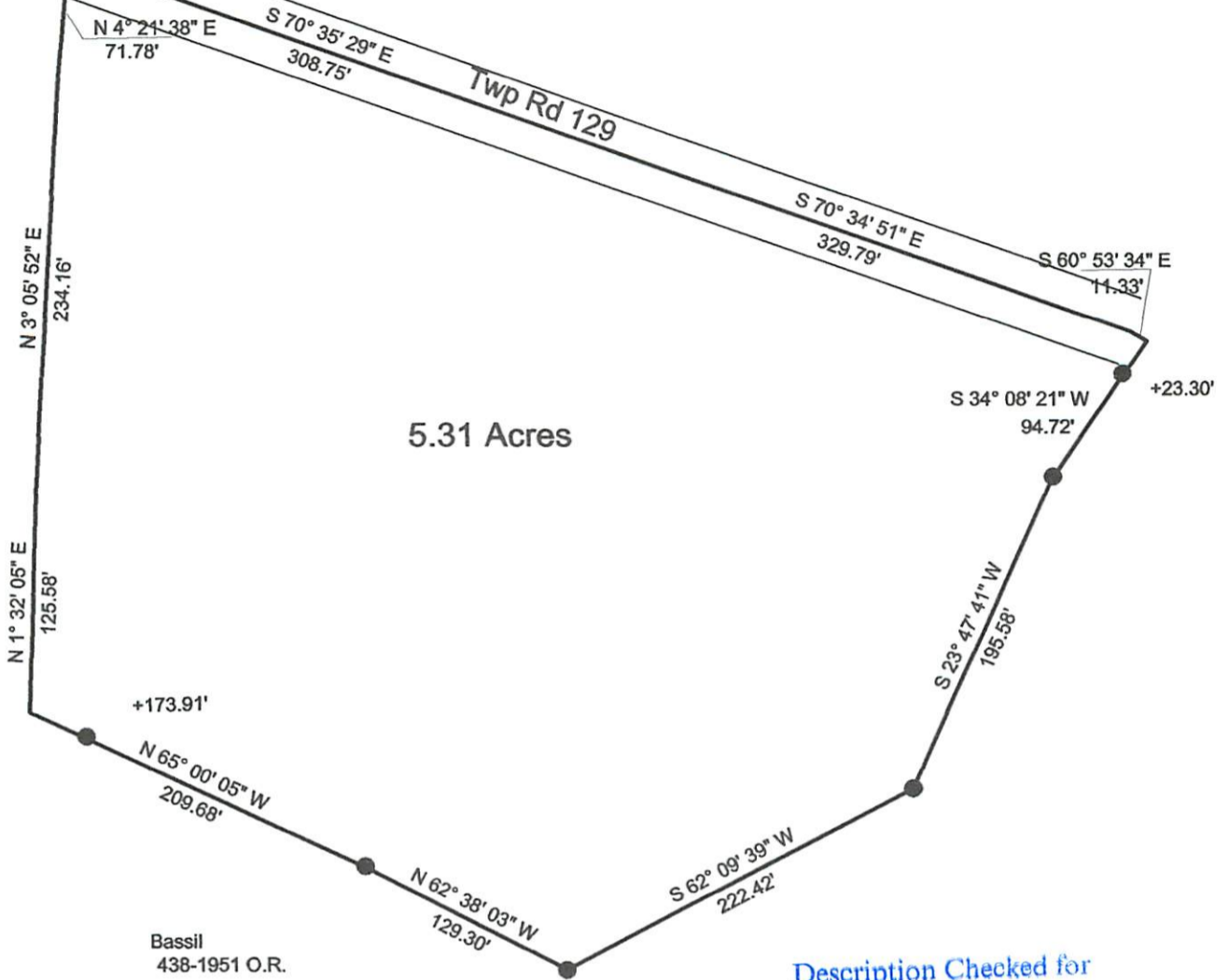
Subject to all easements and rights of way of record
Iron pins set are 5/8" by 30" long rebar w plastic I.D. Cap
Bearings based on N.A.D. 1983 Grid North
The above description is based on a field survey completed August 2011 by John M. Branner P.S. 6805



Description Checked for
Mathematical Accuracy
Athens County
ENGINEER'S OFFICE
BY: K Canterbury
DATE: 8-22-11

P.O.B. bears East, 412.50' [deed]
 S 08-42-32 W 1652.25' (deed)
 from N.W. cor. of Sec. 25

Koker
 317-922 O.R.



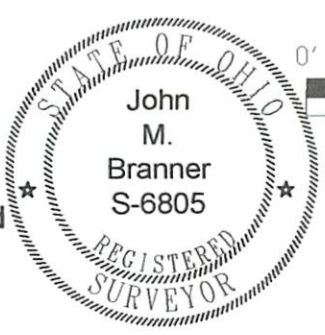
Description Checked for
 Mathematical Accuracy
 Athens County
 ENGINEER'S OFFICE
 BY: K Canterbury
 DATE: 8-22-11



Survey of a 5.31 Acre Tract
 in Section 25, T.6, R.12,
 Rome Township, Athens Co., O.

Surveyed August 2011

John M Branner
 John M. Branner P.S. 6805
 12500 N. Peach Ridge Road
 Athens, Ohio 45701
 740-592-5778



Scale 1 inch = 100 feet
 ● = Iron pin set
 = Iron pin fd.
 Bearings: Grid North N.A.D. 83