

LOT 8



# SOUTHEASTERN LAND SURVEYS

LEONARD F. SWOYER  
REGISTERED PROFESSIONAL LAND SURVEYOR

3428 Pleasant Hill Road  
Athens, Ohio 45701  
614/593-8701

Situated in the Northwest quarter of Section 26, Town 6, Range 12, Rome Township, Athens County,

Ohio and described as follows:

Commencing at a found cross notched stone at the northwest corner of said Section 26; thence on an assumed bearing of South 79 degrees 39 minutes 41 seconds East, a distance of 1367.45 feet to a set iron pin, THE TRUE POINT OF BEGINNING; thence South 83 degrees 23 minutes 52 seconds West (passing a set iron pin at 1155.09 feet) for a total distance of 1165.32 feet to a point in the center of Rome Township Road 226; thence along the center of said Rome Township Road 226 the following sixteen courses and distances:

1. South 6 degrees 49 minutes 20 seconds West, a distance of 34.23 feet to a point; thence
2. South 5 degrees 48 minutes 51 seconds East, a distance of 93.10 feet to a point; thence
3. South 28 degrees 21 minutes 26 seconds East, a distance of 73.93 feet to a point; thence
4. South 34 degrees 29 minutes 24 seconds East, a distance of 118.97 feet to a point; thence
5. South 45 degrees 57 minutes 30 seconds East, a distance of 76.64 feet to a point; thence
6. South 56 degrees 44 minutes 44 seconds East, a distance of 78.99 feet to a point; thence
7. South 59 degrees 05 minutes 01 second East, a distance of 248.25 feet to a point; thence
8. South 60 degrees 58 minutes 43 seconds East, a distance of 104.54 feet to a point; thence
9. South 75 degrees 18 minutes 56 seconds East, a distance of 69.04 feet to a point; thence
10. South 83 degrees 28 minutes 37 seconds East, a distance of 51.64 feet to a point; thence
11. North 88 degrees 13 minutes 27 seconds East, a distance of 55.92 feet to a point; thence
12. North 83 degrees 46 minutes 59 seconds East, a distance of 107.17 feet to a point; thence
13. North 89 degrees 21 minutes 11 seconds East, a distance of 109.81 feet to a point; thence

Description checked for  
Mathematical Accuracy  
ATHENS COUNTY  
ENGINEER'S OFFICE  
BY: S. Blawie  
DATE: 6-3-97

PROPERTY

CONSTRUCTION

SUBDIVISIONS

142

Rom # 26

14. South 77 degrees 05 minutes 50 seconds East, a distance of 24.26 feet to a point; thence
15. South 70 degrees 11 minutes 43 seconds East, a distance of 118.59 feet to a point; thence
16. South 58 degrees 49 minutes 04 seconds East, a distance of 55.96 feet to a point on the west line of a 24.6423 acre tract described in Volume 216 Page 382 of the Athens County Official Deed

Records; thence leaving the said Rome Township Road 26 and along the west line of said 24.6423 acre tract North 3 degrees 42 minutes 57 seconds East (passing a found iron pin at 33.82 feet) for a total distance of 783.58 feet to the point of beginning and containing 14.6124 acres, and being a part of tract VII described in Volume 382 Page 431 of the Athens County Deed Records.

Note: Unless otherwise noted, all set iron pins are 5/8 inch diameter rebar and 30 inches in length and capped with a plastic identification marker inscribed L.F. Swoyer R.L.S. 6765.

The above description was prepared under the supervision of Leonard F. Swoyer Professional Land Surveyor Number 6765 and based on a survey performed by Southeastern Land Surveys dated November 26, 1996.

Subject to all easements and right of ways of record.

143

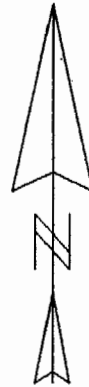


# SOUTHEASTERN LAND SURVEYS

LEONARD F. SWOYER  
REGISTERED PROFESSIONAL LAND SURVEYOR

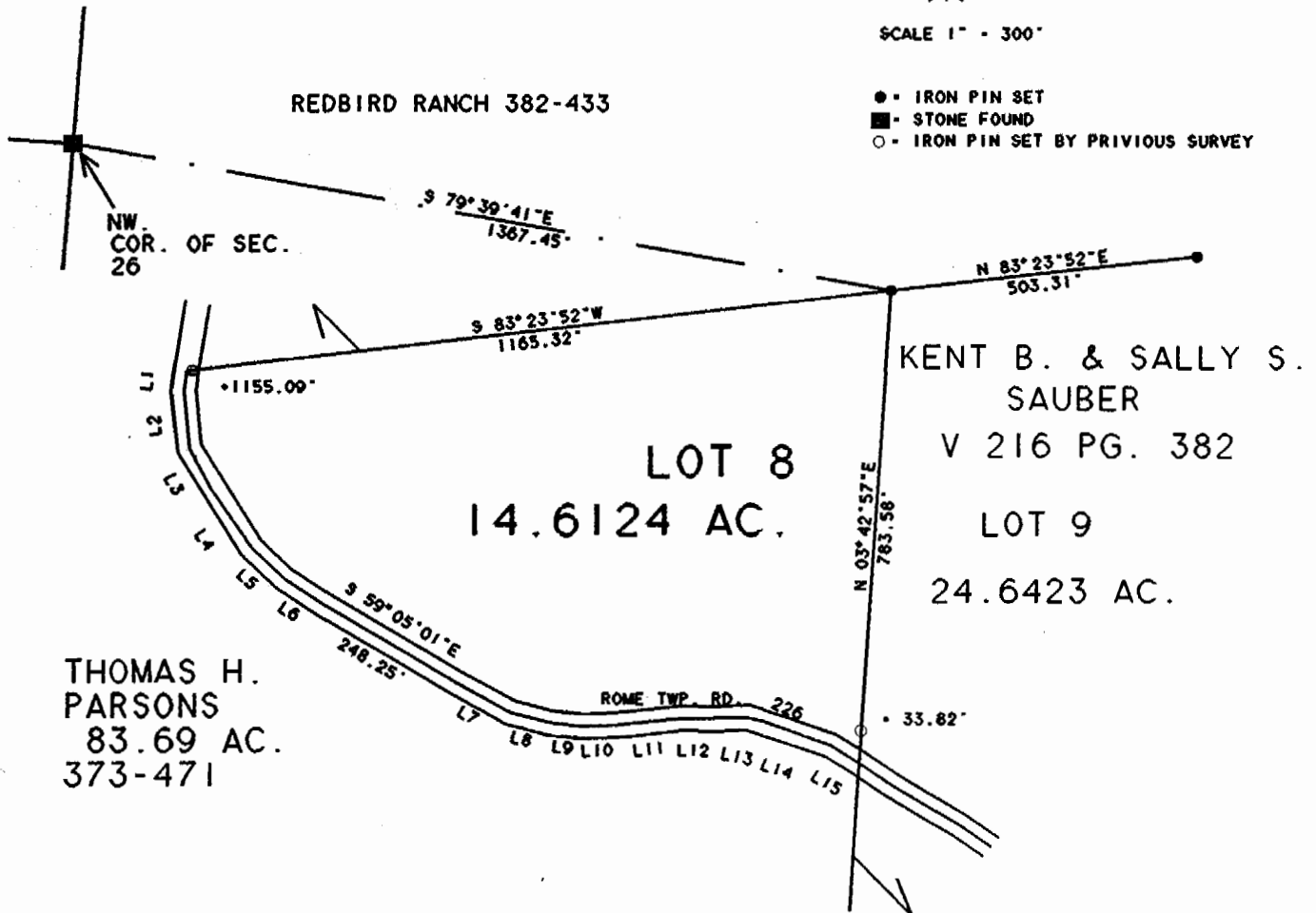
3428 Pleasant Hill Road  
Athens, Ohio 45701  
614/593-8701

LINE	BEARING	DISTANCE
L 1	S 06°49'20"W	34.23'
L 2	S 05°48'51"E	93.10'
L 3	S 28°21'26"E	73.93'
L 4	S 34°29'24"E	118.97'
L 5	S 45°57'30"E	76.64'
L 6	S 56°44'44"E	78.99'
L 7	S 60°58'43"E	104.54'
L 8	S 75°18'56"E	69.04'
L 9	S 83°28'37"E	51.64'
L 10	N 88°13'27"E	55.92'
L 11	N 83°46'59"E	107.17'
L 12	N 89°21'11"E	109.81'
L 13	S 77°05'50"E	24.26'
L 14	S 70°11'43"E	118.59'
L 15	S 58°49'04"E	55.96'



SCALE 1" = 300'

- - IRON PIN SET
- - STONE FOUND
- - IRON PIN SET BY PRVIOUS SURVEY



Description checked for  
Mathematical Accuracy  
ATHENS COUNTY  
ENGINEER'S OFFICE  
BY: S. Blausen  
DATE: 6-3-97

Plat of 14.6124 Ac. Scale 1" = 300'  
 Surveyed for REDBIRD RANCH INC. Date Nov. 26, 1996  
 Subdivision Northwest Quarter  
 Township Rome Section 26 Town 6 Range 12  
 Corporation --- County Athens State Ohio  
Leonard F. Swoyer Jr.  
 Leonard F. Swoyer Jr. Reg. Prof. Land Surveyor No. 6765

144