



SOUTHEASTERN LAND SURVEYS

LEONARD F. SWOYER
REGISTERED PROFESSIONAL LAND SURVEYOR

3428 Pleasant Hill Road
Athens, Ohio 45701
614/593-8701

Situated in the southwest quarter of Section 26, Town 6, Range 12, Rome Township, Athens County,

Ohio and described as follows:

Commencing at the northeast corner of the southwest quarter of said Section 26; thence on an assumed bearing of North 86 degrees 59 minutes 12 seconds West, a distance of 858.66 feet to a set iron pin at the northeast corner of a 45.31 acre tract described in Volume 292 Page 51 of the Athens County Deed Records, THE TRUE POINT OF BEGINNING; thence along a newly described line South 82 degrees 55 minutes 35 seconds East, a distance of 545.43 feet to a set iron pin; thence North 57 degrees 29 minutes 34 seconds East, a distance of 580.25 feet to a set iron pin; thence North 27 degrees 30 minutes 32 seconds East (passing a set iron pin at 189.34 feet) for a total distance of 198.64 feet to a point in the center of Rome Township Road 226; thence along the center of said Rome Township 226 and along the west property line of a 31.565 acre tract described in Volume 255 Page 1272 of the Athens County Official Deed Records and along the west property line of land described in Volume 207 page 278 of the Athens County Official Deed Records the following twelve courses and distances:

1. South 29 degrees 31 minutes 29 seconds East, a distance of 18.22 feet to a point; thence
2. South 11 degrees 45 minutes 19 seconds East, a distance of 54.87 feet to a point; thence
3. South 1 degree 53 minutes 19 seconds West, a distance of 43.91 feet to a point; thence
4. South 10 degrees 23 minutes 44 seconds West, a distance of 92.06 feet to a point; thence
5. South 12 degrees 14 minutes 51 seconds West, a distance of 135.07 feet to a point; thence
6. continuing South 12 degrees 14 minutes 51 seconds West along said line, a distance of 77.25 feet to a point; thence
7. South 8 degrees 13 minutes 39 seconds West, a distance of 66.67 feet to a point; thence

88
ROM # 26

8. South 1 degree 01 minute 46 seconds East, a distance of 8.45 feet to a point; thence
9. continuing South 1 degree 01 minute 46 seconds East along said line, a distance of 57.79 feet to a point; thence
10. South 5 degrees 54 minutes 31 seconds East, a distance of 183.94 feet to a point; thence
11. South 6 degrees 34 minutes 47 seconds East, a distance of 125.53 feet to a point; thence
12. South 4 degrees 57 minutes 38 seconds East, a distance of 120.84 feet to a point, the northeast corner of a 13.03 acre tract described in Volume 216 Page 626 of the Athens County Official Deed Records; thence leaving the center of Rome Township Road 226 and along the north line of said 13.03 acre tract the following six courses and distances
 1. South 87 degrees 07 minutes 57 seconds West, a distance of 9.76 feet to an iron pin*;
thence
 2. North 85 degrees 24 minutes 35 seconds West, a distance of 148.92 feet to an iron pin*;
thence
 3. North 60 degrees 57 minutes 14 seconds West, a distance of 378.19 feet to an iron pin*;
thence
 4. North 66 degrees 50 minutes 34 seconds West, a distance of 417.18 feet to an iron pin*;
thence
 5. South 65 degrees 48 minutes 11 seconds West, a distance of 267.71 feet to an iron pin*;
thence
 6. North 19 degrees 57 minutes 29 seconds West, a distance of 186.81 feet to an iron pin* at the northwest corner of the aforesaid 13.03 acre tract and the east line of an aforementioned 45.31 acre tract; thence along the east line of the aforementioned 45.31 acre tract North 27 degrees 28 minutes 50 seconds East, a distance of 141.95 feet to the point of beginning and containing 10.2972 acres, and being a part of a 70.75 acre tract described as TRACT XVII in Volume 382 Page 433 of the Athens County Deed Records.

Note: Unless otherwise noted all set iron pins are 5/8 inch diameter rebar, 30 inches in length and capped with a plastic identification marker inscribed L.F. Swoyer P.L.S. 6765.

*Denotes iron pins set during a previous survey of a 13.03 acre tract in December of 1995.

The above description was prepared under the supervision of Leonard F. Swoyer Registered Professional Land Surveyor Number 6765 and based on a field survey performed by Southeastern Land Surveys dated October 28, 1998. Subject to all easements and right of way of records.

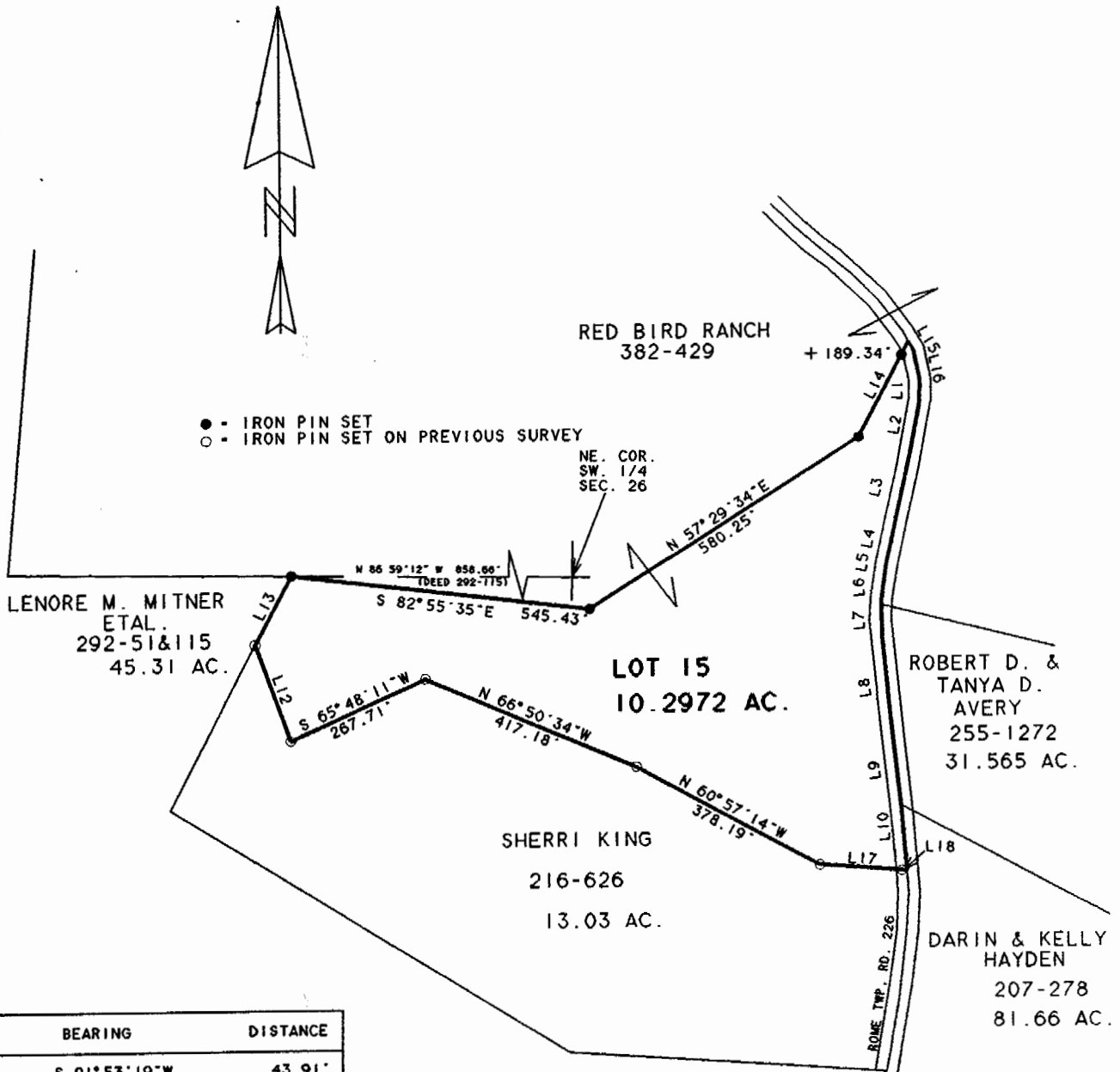
Description checked for
Mathematical Accuracy
ATHENS COUNTY
ENGINEER'S OFFICE
BY: S. Blaisdell
DATE: 10-30-98



SOUTHEASTERN LAND SURVEYS

LEONARD F. SWOYER
REGISTERED PROFESSIONAL LAND SURVEYOR

3428 Pleasant Hill Road
Athens, Ohio 45701
614/593-8701



LINE	BEARING	DISTANCE
L 1	S 01° 53' 19" W	43.91'
L 2	S 10° 23' 44" W	92.06'
L 3	S 12° 14' 51" W	135.07'
L 4	S 12° 14' 51" W	77.25'
L 5	S 08° 13' 39" W	66.67'
L 6	S 01° 01' 46" E	8.45'
L 7	S 01° 01' 46" E	57.79'
L 8	S 05° 54' 31" E	183.94'
L 9	S 06° 34' 47" E	125.53'
L 10	S 04° 57' 38" E	120.84'
L 11	N 85° 52' 02" W	158.60'
L 12	N 19° 57' 29" W	186.81'
L 13	N 27° 28' 50" E	141.95'
L 14	N 27° 30' 32" E	198.64'
L 15	S 29° 31' 29" E	18.22'
L 16	S 11° 45' 19" E	54.87'
L 17	N 85° 24' 35" W	148.92'
L 18	S 87° 07' 57" W	9.76'

Description checked for
Mathematical Accuracy
ATHENS COUNTY
ENGINEER'S OFFICE

BY: P. Blausg
DATE: 10-30-98

93

Plat of 10.2972 Ac. Scale 1" = 300'
 Surveyed for Red Bird Ranch Date Oct. 28, 1998
 Subdivision Southwest Quarter
 Township Rome Section 26 Town 6 Range 12
 Corporation ----- County Athens State Ohio
 Leonard F. Swoyer Jr. Reg. Prof. Land Surveyor No. 6765