

L E G A L   D E S C R I P T I O N

Situated in the State of Ohio, County of Athens, Township of Rome and being part of the South Half of Section 26, Town 6, Range 12 and being more fully described as follows:

Beginning at the Northeast corner of the Southeast quarter of said Section 26;

THENCE North 86 degrees 59 minutes 12 seconds West for a distance of 858.66 feet to a POINT (DEED);

THENCE South 27 degrees 28 minutes 55 seconds West for a distance of 141.95 feet to a POINT (DEED)

THENCE South 27 degrees 28 minutes 55 seconds West for a distance of 339.36 feet to a STONE FOUND;

THENCE South 36 degrees 23 minutes 03 seconds West for a distance of 561.07 feet to an IRON PIN SET and being the TRUE PLACE OF BEGINNING;

THENCE South 36 degrees 23 minutes 03 seconds West for a distance of 392.47 feet to an ODOT R/W MONUMENT;

THENCE South 28 degrees 34 minutes 39 seconds East for a distance of 266.59 feet to an ODOT R/W MONUMENT;

THENCE South 57 degrees 28 minutes 21 seconds East for a distance of 220.92 feet to an ODOT R/W MONUMENT;

THENCE South 39 degrees 24 minutes 16 seconds East for a distance of 217.57 feet to an ODOT R/W MONUMENT;

THENCE South 20 degrees 02 minutes 55 seconds East for a distance of 330.21 feet to an IRON PIN SET;

THENCE North 32 degrees 27 minutes 07 seconds East for a distance of 48.30 feet to an IRON PIN SET;

THENCE North 13 degrees 31 minutes 32 seconds West for a distance of 69.53 feet to an IRON PIN SET;

THENCE North 32 degrees 25 minutes 48 seconds East for a distance of 740.50 feet to an IRON PIN SET;

THENCE North 57 degrees 50 minutes 46 seconds West for a distance of 300.80 feet to an IRON PIN SET;

THENCE North 62 degrees 21 minutes 19 seconds West for a distance of 546.81 feet to the TRUE PLACE OF BEGINNING;

Together with and subject to covenants, easements, and restrictions of record.

Said property contains 11.52 acres more or less.

Survey and description made with field observation obtained In March of 2002, Using a basis of bearing per O.R 288, Page 829 By Karl Wm. Zartman Jr., P.S.7614

Prior Instrument Reference: O.R.185, Page 368.

Description checked for  
Mathematical Accuracy  
ATHENS COUNTY  
ENGINEER'S OFFICE  
BY: S. Blouse  
DATE: 4-19-02

45  
Row # 26

L E G A L   D E S C R I P T I O N

Situated in the State of Ohio, County of Athens, Township of Rome and being part of the South Half of Section 26, Town 6, Range 12 and more fully described as follows:

Beginning at the Northeast corner of the Southeast quarter of said Section 26;

THENCE North 86 degrees 59 minutes 12 seconds West for a distance of 858.66 feet to a POINT (DEED);

THENCE South 27 degrees 28 minutes 55 seconds West for a distance of 141.95 feet to a POINT (DEED);

THENCE South 27 degrees 28 minutes 55 seconds West for a distance of 339.36 feet to a STONE FOUND and being the TRUE PLACE OF BEGINNING;

THENCE South 36 degrees 23 minutes 03 seconds West for a distance of 561.07 feet to an IRON PIN SET;

THENCE South 62 degrees 21 minutes 19 seconds East for a distance of 546.81 feet to an IRON PIN SET;

THENCE South 57 degrees 50 minutes 46 seconds East for a distance of 300.80 feet to an IRON PIN SET;

THENCE South 32 degrees 25 minutes 48 seconds West for a distance of 740.50 feet to an IRON PIN SET;

THENCE South 13 degrees 31 minutes 32 seconds East for a distance of 69.53 feet to an IRON PIN SET;

THENCE North 32 degrees 27 minutes 07 seconds East for a distance of 48.30 feet to an IRON PIN FOUND;

THENCE North 32 degrees 25 minutes 48 seconds East for a Distance of 1257.35 feet to an IRON PIN FOUND and passing Iron Pin Set at 154.67, 311.28, 430.34, 661.83, 740.79, and 867.47 feet distant;

THENCE North 57 degrees 50 minutes 46 seconds West for a distance of 857.02 feet to the TRUE PLACE OF BEGINNING;

Together with and subject to covenants, easements, and restrictions of record.

Said property contains 11.52 acres more or less.

Survey and description made with field observation obtained In March of 2002, using a basis of bearing per O.R.288, Page 829 By Karl Wm. Zartman Jr., P.S.7614.

Prior Instrument Reference: O.R.185, Page 368.

Description checked for  
Mathematical Accuracy  
ATHENS COUNTY  
ENGINEER'S OFFICE  
BY: S. Blouse  
DATE: 4-19-02

STATE OF OHIO  
 COUNTY OF ATHENS  
 TOWNSHIP OF ROME  
 SECTION 26, TOWN 6, RANGE 12



- IRON PIN SET
- I.P.FOUND
- ⊞ STONE FOUND

\* BASIS OF BEARING



PER O.R.288-829

J.J. & K.L. JACOBS  
 O.R.286-1539  
 O.R.286-1539

M.M. BAKER  
 \*288-829 O.R.  
 13.03 AC

TRACT 1  
 11.52 ACRES  
 TO BE CONVEYED FROM  
 O.R.185-368

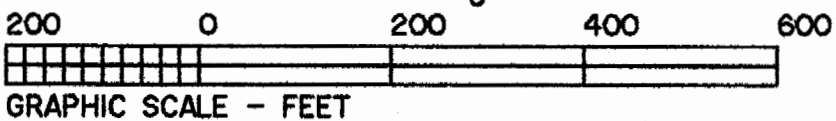
TRACT 2  
 11.52 ACRES  
 TO BE CONVEYED FROM  
 O.R.185-368

R.D. & L.S. TIMBLIN  
 75-263  
 11.60 AC

Checked for  
 Mathematical Accuracy  
 ATHENS COUNTY  
 ENGINEER'S OFFICE  
 BY: *S. Blausen*  
 DATE: *9-19-02*

O.R.238-592  
 ROUTE 50  
 R/W STATE OF OHIO  
 O.R.266-756

S.R.329



**ZARTMAN SURVEYS**  
 STAR RT. BOX 72 RENO, OH. 45773  
 PHONE: 740-473-9799/9777

DATE	REV	PROJECT #
3/2002	00	22015

*Karl Wm Zartman Jr*  
 KARL WM. ZARTMAN JR., P.S.7614

49