

**Branner Surveying
12500 N. Peach Ridge
Athens, Ohio**

Situated in Section 30, T.6, R.12, Rome Township, Athens County, Ohio and being more particularly described as follows:

Beginning at an iron pin found at the South-east corner of of a 7.005 acre tract, said pin bears South 00 degrees 07 minutes 56 seconds West, 1491.92 feet from the northeast corner of Section 30.

Thence, North 87 degrees 20 minutes 48 seconds West, a distance 749.65 feet to a point in County Road 84 (Felton Road), passing an iron pin set at 733.75 feet,

Thence, along said road, North 9 degrees 20 minutes 20 seconds East, a distance of 38.78 feet to a point,

Thence, North 13 degrees 41 minutes 24 seconds East, a distance of 111.58 feet to a point,

Thence, North 22 degrees 53 minutes 22 seconds East, a distance of 207.69 feet to a point,

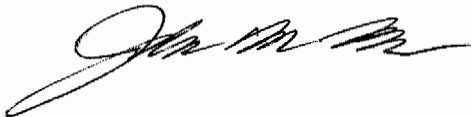
Thence, North 24 degrees 56 minutes 52 seconds East, a distance of 97.21 feet to a point,

Thence, North 24 degrees 16 minutes 41 seconds East, 59.25 feet to a point;

Thence, leaving said road, South 47 degrees 54 minutes 36 seconds East, a distance of 768.10 feet to the point of beginning, passing an iron pin found at 20.5 feet and containing 4.334 acres.

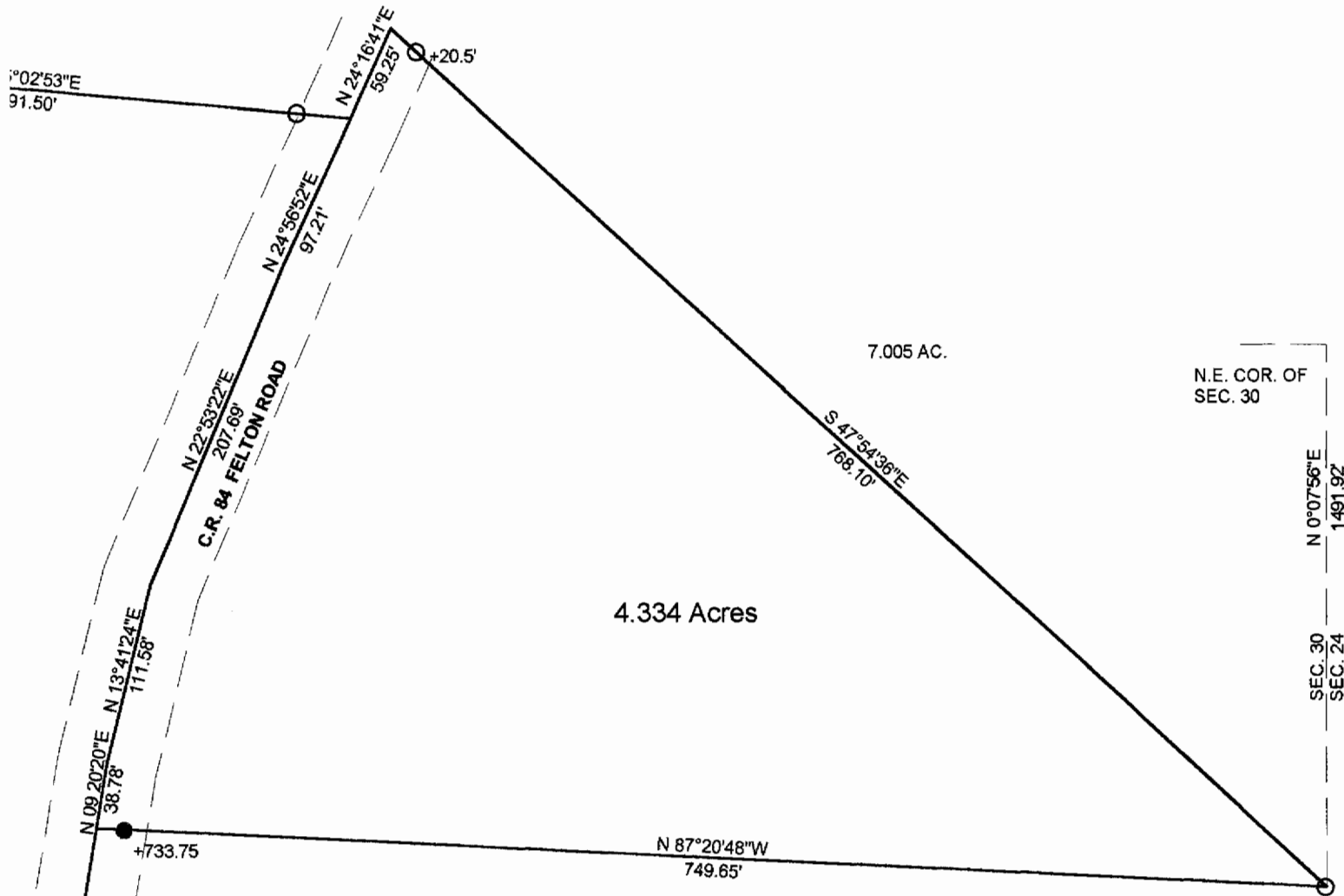
Subject to all easements and rights of way.

Based on a field survey completed August 2003, by John M. Branner, P.S. 6508.



Description checked for
Mathematical Accuracy
ATHENS COUNTY
ENGINEER'S OFFICE
BY: K. Cantab
DATE: 8/14/03

Rome # 30



N

SCALE 1 INCH = 100 FEET

● = IRON PIN SET

○ = IRON PIN FOUND

Description checked for
 Mathematical Accuracy
 ATHENS COUNTY
 ENGINEER'S OFFICE
 BY: *J. Cantab*
 DATE: *8/14/03*

SURVEY OF A 4.334 ACRE TRACT
 IN SECTION 30, T.6, R.12,
 ROME TOWNSHIP
 ATHENS COUNTY, OHIO
 SURVEYED AUGUST 2003

BY: *John M. Branner*
 JOHN M. BRANNER P.S. 6805
 12500 N. PEACH RIDGE ROAD
 ATHENS, OHIO 45701
 (740) 592-5778

