

**Branner Surveying**

**12500 N. Peach Ridge  
Athens, Ohio**

Situated in Section 30, T.6, R.12, Rome Township, Athens County, Ohio and being more particularly described as follows:

Beginning at an iron pin found at the South-east corner of of a 7.005 acre tract, said pin bears South 00 degrees 07 minutes 56 seconds West, 1491.92 feet from the northeast corner of Section 30.

Thence, South 0 degrees 7 minutes 56 seconds West along boundary line dividing Sections 30 and 24 of Rome Township, a distance of 208.38 feet to an iron pin set,

Thence, North 89 degrees 57 minutes 18 seconds West, a distance of 540.97 feet to iron pin set at fallen corner tree,

Thence, South 50 degrees 35 minutes 35 seconds West, a distance 449.30 feet to a point in County Road 84 (Felton Road), passing an iron pin set at 298.55 feet,

Thence, along said road, North 20 degrees 35 minutes 58 seconds East, a distance of 200.39 feet to a point,

Thence, North 14 degrees 10 minutes 41 seconds East, a distance of 155.49 feet to a point,

Thence, North 9 degrees 20 minutes 22 seconds East, a distance of 192.11 feet to a point,

Thence, leaving said road, South 87 degrees 20 minutes 48 seconds East, a distance of 749.65 feet to the point of beginning, passing an iron pin set at 15.90 feet and containing 4.788 acres.

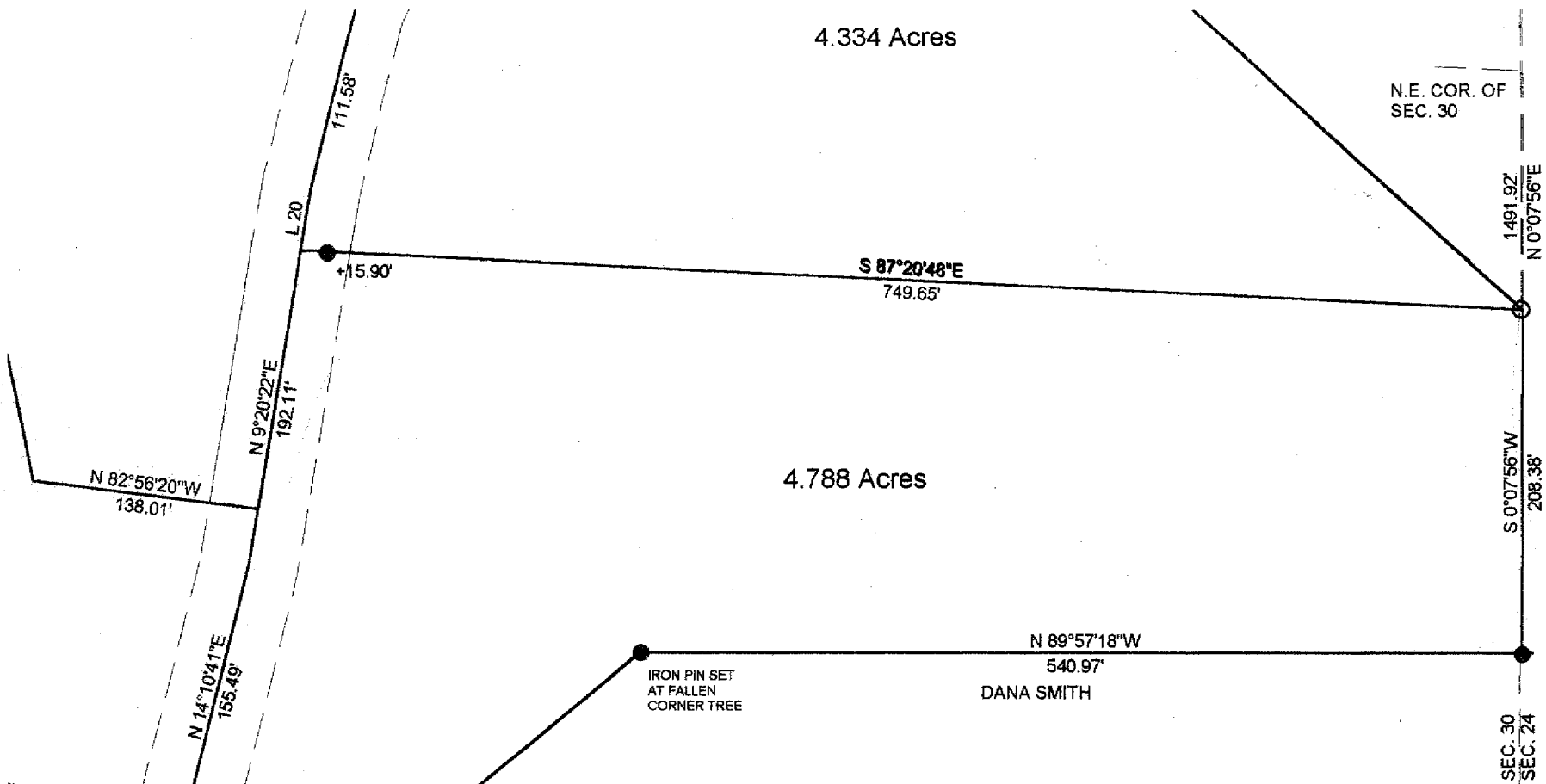
Subject to all easements and rights of way.

Based on a field survey completed August 2003 by John M. Branner, P.S. 6805.



Description checked for  
Mathematical Accuracy  
ATHENS COUNTY  
ENGINEER'S OFFICE  
BY: S. Blausen  
DATE: 8-12-03

Rom # 30



4.334 Acres

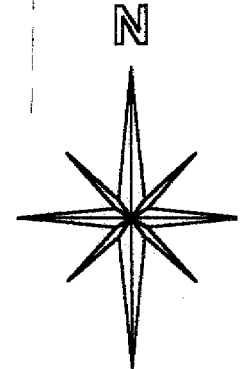
N.E. COR. OF  
SEC. 30

4.788 Acres

SURVEY OF A 4.788 ACRE TRACT  
IN SECTION 30, T.6, R.12,  
ROME TOWNSHIP  
ATHENS COUNTY, OHIO  
SURVEYED AUGUST 2003

BY: *John M. Branner*  
JOHN M. BRANNER P.S. 6805  
12500 N. PEACH RIDGE ROAD  
ATHENS, OHIO 45701  
(740) 592-5778

SCALE 1 INCH = 100 FEET  
● = IRON PIN SET  
○ = IRON PIN FOUND



Description checked for  
Mathematical Accuracy  
ATHENS COUNTY  
ENGINEER'S OFFICE  
BY: *S. Blausen*  
DATE: *8-12-03*