

BRANNER SURVEYING

MEMBER-PROFESSIONAL LAND SURVEYORS OF OHIO

12500 N. PEACH RIDGE ROAD
ATHENS, OHIO 45701

JOHN M. BRANNER
Registered Land Surveyor

TELEPHONE
(614) 592-5778

DESCRIPTION OF A 44.34 ACRE TRACT

Situated in Section 31, T.6, R.11, Rome Township, Athens County, Ohio and being more particularly described as follows:

Commencing at a stone found at the South-east corner of Section 31; thence, North 00 Degrees 02 Minutes 31 Seconds East, 3790.13 feet to a stone found at Grantor's South-east corner and being the POINT OF BEGINNING;

thence North 89 degrees 59 minutes 16 seconds West, a distance of 2249.56 feet to a point in Township Road 574, an iron pin bears North 89 Degrees 59 Minutes 16 Seconds West, 131.45 feet;

thence, along said road the following bearings and distances:

North 21 degrees 30 minutes 12 seconds East, a distance of 107.13 feet;

thence North 29 degrees 46 minutes 21 seconds East, a distance of 145.13 feet;

thence North 47 degrees 44 minutes 42 seconds East, a distance of 459.83 feet;

thence North 64 degrees 03 minutes 43 seconds East, a distance of 260.47 feet;

thence North 84 degrees 40 minutes 18 seconds East, a distance of 213.39 feet;

thence North 64 degrees 19 minutes 49 seconds East, a distance of 192.65 feet;

thence North 50 degrees 23 minutes 43 seconds East, a distance of 165.23 feet;

thence North 32 degrees 02 minutes 14 seconds East, a distance of 174.51 feet;

thence North 45 degrees 01 minute 22 seconds East, a distance of 182.00 feet;

thence North 63 degrees 06 minutes 38 seconds East, a distance of 400.83 feet;

thence South 89 degrees 30 minutes 37 seconds East, a distance of 197.46 feet;

thence South 85 degrees 01 minute 16 seconds East, a distance of 283.83 feet;

thence, leaving said road South 0 degrees 23 minutes 23 seconds West, a distance of 1289.42 feet, passing an iron pin found at 17.75 feet to the POINT OF BEGINNING; said described tract containing 44.341 acres.

Subject to all easements and rights of way of record.

DESCRIPTION CHECKED FOR
Mathematical Accuracy
ATHENS COUNTY
ENGINEER'S OFFICE

BY: a. c. yane
DATE: 6/23/94

102

Rome #31

104

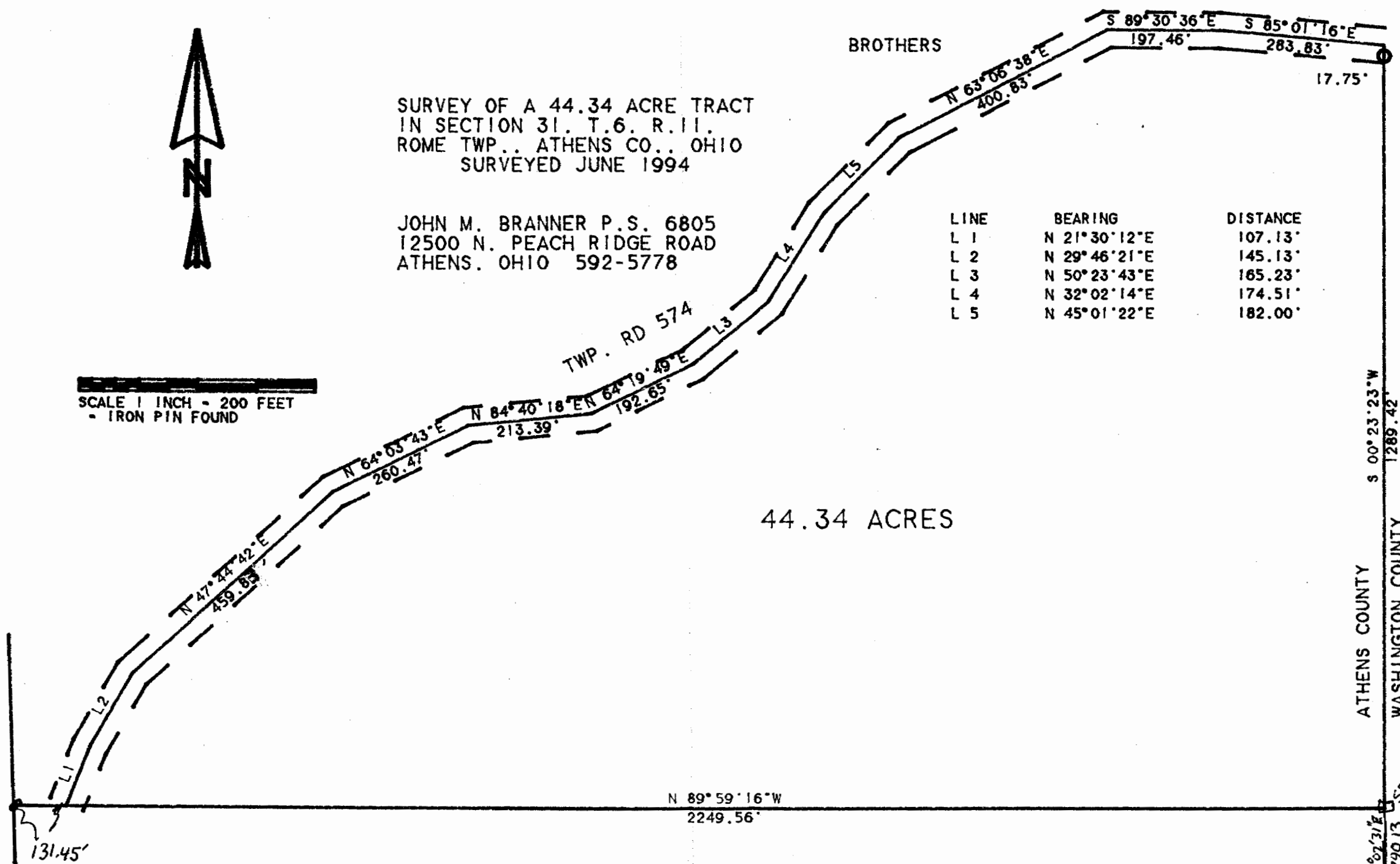


SURVEY OF A 44.34 ACRE TRACT
IN SECTION 31, T.6, R.11.
ROME TWP., ATHENS CO., OHIO
SURVEYED JUNE 1994

JOHN M. BRANNER P.S. 6805
12500 N. PEACH RIDGE ROAD
ATHENS, OHIO 592-5778

SCALE 1 INCH = 200 FEET
- IRON PIN FOUND

LINE	BEARING	DISTANCE
L 1	N 21° 30' 12" E	107.13'
L 2	N 29° 46' 21" E	145.13'
L 3	N 50° 23' 43" E	165.23'
L 4	N 32° 02' 14" E	174.51'
L 5	N 45° 01' 22" E	182.00'



44.34 ACRES

N 89° 59' 16" W
2249.56'

ATHENS COUNTY
WASHINGTON COUNTY
S 00° 23' 23" W
1289.42'
N 02° 12' 12" E
3790.13'

S.E. COR