

BRANNER SURVEYING

MEMBER-PROFESSIONAL LAND SURVEYORS OF OHIO

12500 N. PEACH RIDGE ROAD
ATHENS, OHIO 45701

JOHN M. BRANNER
Registered Land Surveyor

TELEPHONE
(740) 592-5778

DESCRIPTION OF A 26.001 ACRE TRACT

Situated in Section 36, T. 6, R. 12, Rome Township, Athens County, Ohio and being more particularly described as follows.

Commencing at a point in Township Road 222 Bearing South 2543.84 feet and East 1495.34 feet from the North-west corner of Section 36, said point being the POINT OF BEGINNING;
thence, following said Road, South 66 degrees 29 minutes 00 seconds East, a distance of 53.19 feet to a point;
thence, South 70 degrees 48 minutes 41 seconds East, a distance of 103.60 feet to a point;
thence, South 84 degrees 54 minutes 42 seconds East, a distance of 73.72 feet to a point;
thence, North 89 degrees 00 minutes 01 second East, a distance of 409.79 feet to a point;
thence, South 87 degrees 42 minutes 00 seconds East, a distance of 355.90 feet to a point;
thence, South 86 degrees 50 minutes 00 seconds East, a distance of 46.52 feet to a point;
thence, leaving said Road, South 0 degrees 07 minutes 10 seconds West, a distance of 913.31 feet to an iron pin set, passing an iron pin set at 25.00 feet;
thence, South 80 degrees 11 minutes 35 seconds West, a distance of 400.90 feet to an iron pin set;
thence, South 46 degrees 28 minutes 58 seconds West, a distance of 125.00 feet to an iron pin set;
thence, North 41 degrees 56 minutes 46 seconds West, a distance of 204.58 feet to an iron pin set;
thence, South 80 degrees 11 minutes 35 seconds West, a distance of 361.57 feet to an iron pin set;
thence, North 69 degrees 26 minutes 49 seconds West, a distance of 316.47 feet to an iron pin set;
thence, North 14 degrees 39 minutes 08 seconds East, a distance of 969.01 feet to the POINT OF BEGINNING, passing an iron pin set at 883.38 feet; said described tract containing 26.001 acres (1,132,612.0480 square feet).

Subject to all easements and right-of-ways of record.
All iron pins set are 5/8 inch x 30 inch long rebar.

The above description is based on a field survey completed November 1998 By: John M. Branner
P.S. 6805, 12500 N. Peach Ridge Road, Athens, Ohio 45701 (740) 592-5778

Description checked for
Mathematical Accuracy
ATHENS COUNTY
ENGINEER'S OFFICE
BY: K. Pantenburg
DATE: 11/30/98

Rome #36

121

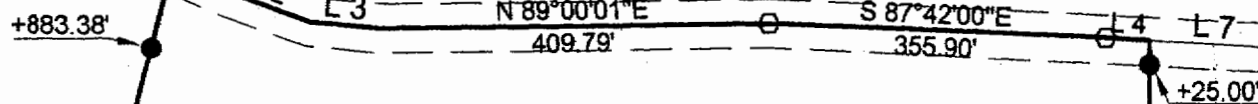
281

P.O.B.
BEARING SOUTH 2543.84 FEET
AND EAST 1495.34 FEET FROM
THE NORTH-WEST CORNER OF
SECTION 36

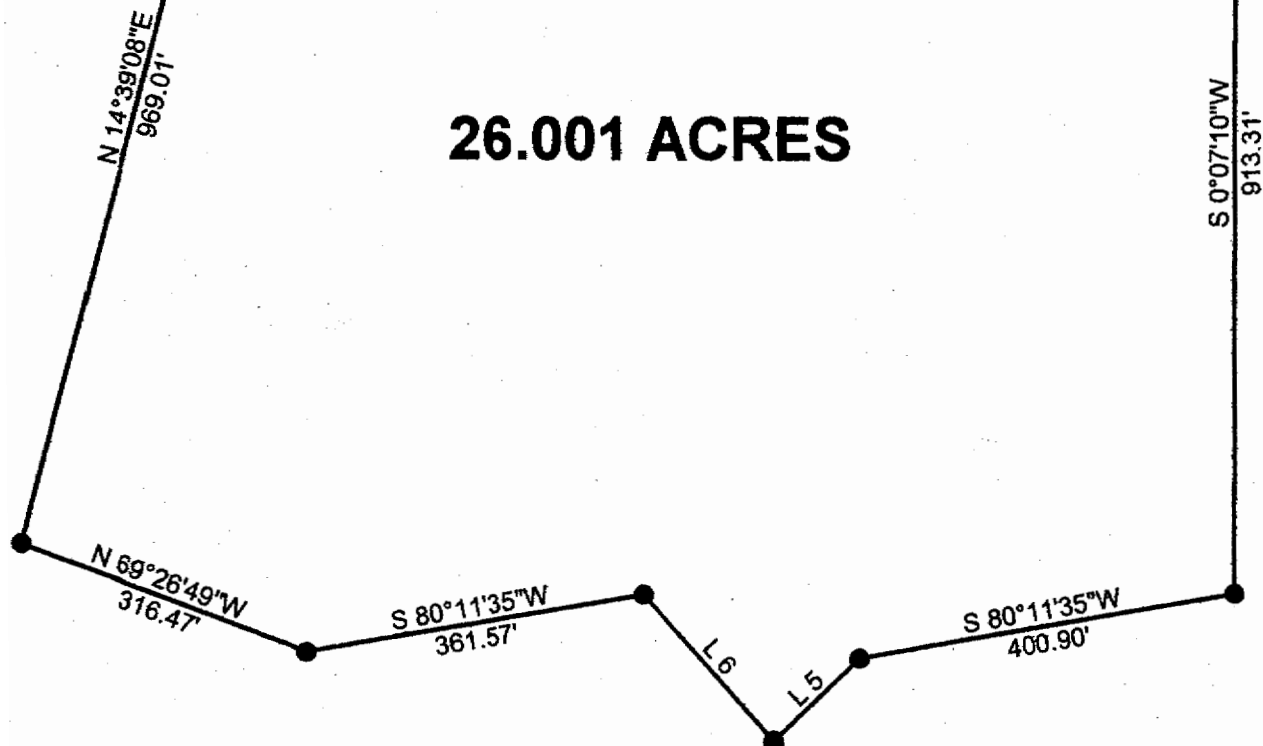
LARRY R. &
ANDREA S.
WEBB
347-841
211 AC.

LARRY R. &
ANDREA S.
WEBB
347-841
211 AC.

TOWNSHIP ROAD 222

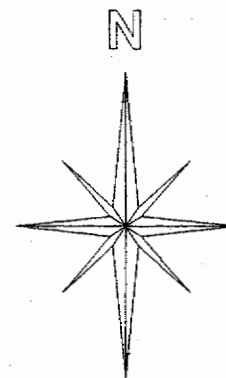


26.001 ACRES

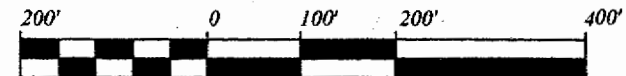


LARRY R. &
ANDREA S.
WEBB
347-841
211 AC.

Line	Bearing	Distance
1	S 66°29'00"E	53.19'
2	S 70°48'41"E	103.60'
3	S 84°54'42"E	73.72'
4	S 86°50'00"E	46.52'
5	S 46°28'58"W	125.00'
6	N 41°56'46"W	204.58'
7	S 86°50'00"E	135.88'



Graphic Scale



1 INCH = 200 FEET

- = IRON PINS FOUND
- = IRON PINS SET
- = NAIL FOUND

BEARINGS ARE BASED ON A SURVEY
OF A 116.314 ACRE TRACT AND
ARE USED TO DENOTE ANGLES ONLY

SURVEY OF A 26.001 ACRE TRACT
SECTION 36, T. 6, R.12, ROME TOWNSHIP
ATHENS COUNTY, OHIO
SURVEYED NOVEMBER 1998

JOHN M. BRANNER P.S. 6805
12500 N. PEACH RIDGE ROAD
ATHENS, OHIO 45701
(740) 592-5778

Description checked for
Mathematical Accuracy
ATHENS COUNTY
ENGINEER'S OFFICE
BY: R. Antebury
DATE: 11-30-98