

BRANNER SURVEYING

MEMBER-PROFESSIONAL LAND SURVEYORS OF OHIO

PEACH RIDGE ROAD
ROUTE 3 BOX 240B
ATHENS, OHIO 45701

JOHN M. BRANNER
Registered Land Surveyor

TELEPHONE
(614) 592-5778

DESCRIPTION OF A 234.55 ACRE TRACT

Situated in Fraction 1, Fraction 2, and Fraction 6, in Sections 9, 14 and 15 of T.6, R.12, Rome Township, Athens County, Ohio and being a Part of a Fourth Tract as recorded in Volume 267, Page 644, Athens County Deed Records and being more particularly described as follows:

Beginning at an iron Pin set at the South-east corner of Fraction 1, thence, along the South-line of said Fraction South 89 Degrees 16 Minutes 20 Seconds West, 2609.90' to a fence corner; thence, N 00 Degrees 56 Minutes 23 Seconds West, 3411.66' to an iron Pin at the South-west corner of a 41.78 acre tract; thence, along the South-line of said tract the following Eight (8) courses:

S 72 Degrees 39 Minutes 39 Seconds E , 639.11' to an iron Pin;

N 25 Degrees 22 Minutes 32 Seconds E , 189.61' to an iron Pin;

N 67 Degrees 48 Minutes 30 Seconds E , 125.42' to an iron Pin;

S 85 Degrees 52 Minutes 27 Seconds E , 252.45' to an iron Pin;

N 68 Degrees 35 Minutes 10 Seconds E , 351.98' to an iron Pin ;

S 42 Degrees 48 Minutes 27 Seconds E , 198.00' to an iron Pin ;

N 81 Degrees 40 Minutes 30 Seconds E , 374.33' to an iron Pin ;

N 41 Degrees 52 Minutes 17 Seconds E , 78.00' to a Point in State Route 144; thence, along said road S 84 Degrees 42 Minutes 00 Seconds East, 152.96' to a railroad spike set; thence, leaving said road and along the thread of an intermittent stream the following Seven (7) courses:

7
ROM #9/11/15

ORIGINAL RECORD

- N 43 Degrees 37 Minutes 51 Seconds E , 44.69' ;
- S 78 Degrees 04 Minutes 36 Seconds E , 61.37' ;
- S 58 Degrees 05 Minutes 44 Seconds E , 87.76' ;
- S 48 Degrees 54 Minutes 25 Seconds E , 127.43' ;
- N 87 Degrees 25 Minutes 35 Seconds E , 229.63' ;
- S 63 Degrees 46 Minutes 26 Seconds E , 139.08' ;
- N 89 Degrees 40 Minutes 19 Seconds E , 416.03' to the

center of the Hocking River; thence, down said river, S 26 Degrees 05 Minutes 22 Seconds E, 307.03' to a Point opposite the East bank of a creek, said Point being the North-west corner of the Cook and Crippen Mill Lot; thence, along the West-line of said lot, S 01 Degrees 59 Minutes 37 Seconds W , 107.04' to a Point on the North-line of a 4.81 acre tract; thence, along the lines of the 4.81 acre tract the following Five (5) courses:

- S 37 Degrees 07 Minutes 53 Seconds W , 113.88' to a Point in State Route 144 ;
- S 87 Degrees 37 Minutes 53 Seconds W , 128.00' to a Point in State Route 144;
- S 07 Degrees 04 Minutes 25 Seconds W , 231.16' to an iron Pin found;
- S 22 Degrees 49 Minutes 25 Seconds W , 35.80' to the South-west corner of the 4.81 acre tract;
- N 79 Degrees 34 Minutes 25 Seconds E , 231.80' to the West-line of the Cook and Crippen Mill Lot; thence, along the West-line of said lot, S 01 Degrees 59 Minutes 37 Seconds West, 1637.83' to an iron Pin at the North-line of Section 8; thence, along the North-line of said Section S 89 Degrees 12 Minutes 36 Seconds West, 528.00' to an iron Pin set at the North-west corner of Section 8; thence, S 00 Degrees 08 Minutes 40 Seconds East, 966.90' to the Point of beginning and containing 234.55 acres of which 127 acres are in Fraction 1, 47 acres are in Fraction 2, and 61.55 acres are in Fraction 6.

Subject to all easements and rights of way of record.

John M. Branner R.L.S. 6805

12/24/85

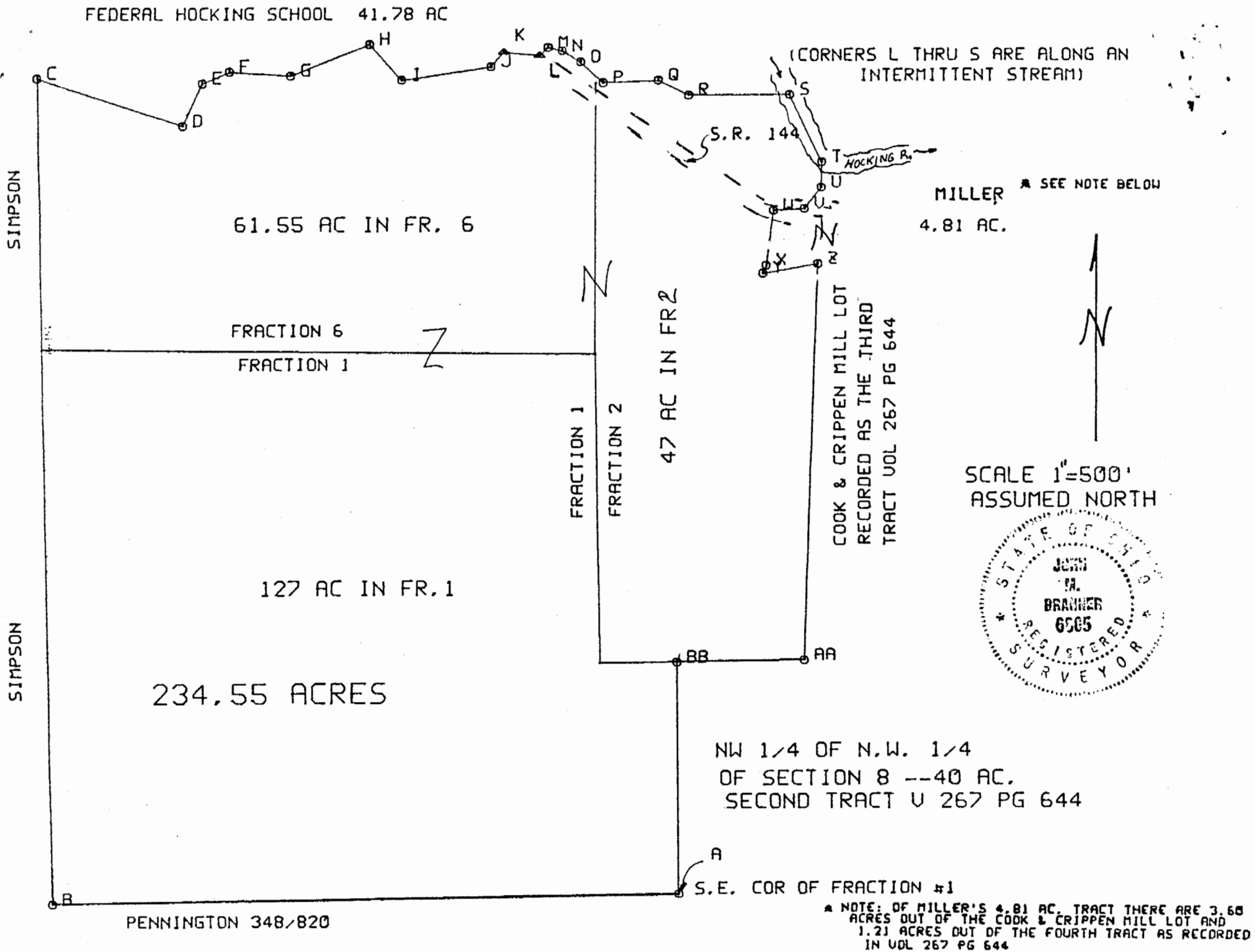
John Branner

12/24/85

RECORDED

INDEXED

SECTION CHECKED FOR



DESCRIPTION OF CORNERS

- A IRON PIN SET AT S.E. COR OF FRACTION #1
- 136" WHITE OAK BEARS S 64° E 6 LINKS AS
- PER U.S PG. 72 RECORD OF SURVEYS
- ATHENS COUNTY ENGINEER
- B FENCE CORNER (IRON PIN SET)
- C IRON PIN SOUTH-WEST CORNER OF -
- 41.78 ACRE TRACT
- D IRON PIN SOUTH-LINE OF 41.78 AC.
- E IRON PIN SOUTH-LINE OF 41.78 AC. TRACT
- F IRON PIN SOUTH-LINE OF 41.78 AC. TRACT
- G IRON PIN SOUTH-LINE OF 41.78 AC. TRACT
- H IRON PIN SOUTH-LINE OF 41.78 AC. TRACT
- I IRON PIN SOUTH-LINE OF 41.78 AC. TRACT
- J IRON PIN SOUTH-LINE OF 41.78 AC. TRACT
- K S.W COR OF 41.78 ACRE TRACT IN S.R. 144
- L RAILROAD SPIKE SET IN S.R. 144
- M THREAD OF INTERMITTENT STREAM
- N THREAD OF INTERMITTENT STREAM
- O THREAD OF INTERMITTENT STREAM
- P THREAD OF INTERMITTENT STREAM
- Q THREAD OF INTERMITTENT STREAM
- R THREAD OF INTERMITTENT STREAM
- S THREAD OF INTERMITTENT STREAM
- AND CENTER OF HOCKING RIVER
- T CENTER OF HOCKING RIVER
- OPPOSITE EAST SIDE OF CREEK
- U INTERSECTION OF WEST-LINE OF COOK&CRIPPEN MILL
- LOT WITH NORTH-LINE OF 4.81 ACRE TRACT
- V CORNER OF 4.81 ACRE TRACT IN S.R.144
- W CORNER OF 4.81 ACRE TRACT IN S.R.144
- X IRON PIN FOUND 4.81 ACRE TRACT
- Y SOUTH-WEST CORNER OF 4.81 ACRE TRACT
- Z INTERSECTION OF WEST-LINE OF COOK& CRIPPEN
- MILL LOT WITH SOUTH-LINE OF 4.81 ACRE TRACT
- AA IRON PIN SET AT SOUTH-WEST CORNER OF COOK&CRIPPEN
- MILL LOT ON NORTH-LINE OF SECTION 8
- BB IRON PIN SET NORTH-WEST CORNER OF SECTION 8

SURVEY DATA

LINE	BEARING	DISTANCE
A-B	S 89° 16' 20"W	2609.90'
B-C	N 00° 56' 23"W	3411.66'
C-D	S 72° 39' 39"E	639.11'
D-E	N 25° 22' 32"E	189.61'
E-F	N 67° 48' 30"E	125.42'
F-G	S 85° 52' 27"E	252.45'
G-H	N 68° 35' 10"E	351.98'
H-I	S 42° 48' 27"E	198.00'
I-J	N 81° 40' 30"E	374.33'
J-K	N 41° 52' 17"E	78.00'
K-L	S 84° 42' 00"E	152.96'
L-M	N 43° 37' 51"E	44.69'
M-N	S 78° 04' 36"E	61.37'
N-O	S 58° 05' 44"E	87.76'
O-P	S 48° 54' 25"E	127.43'
P-Q	N 87° 25' 35"E	229.63'
Q-R	S 63° 46' 26"E	139.08'
R-S	N 89° 40' 19"E	416.03'
S-T	S 26° 05' 22"E	307.03'
T-U	S 01° 59' 37"W	107.04'
U-V	S 37° 07' 53"W	113.88'
V-W	S 87° 37' 53"W	128.00'
W-X	S 07° 04' 25"W	231.16'
X-Y	S 22° 49' 25"W	35.80'
Y-Z	N 79° 34' 25"E	231.80'
Z-AA	S 01° 59' 37"W	
AA-BB	S 89° 12' 36"W	528.00'
BB-A	S 00° 08' 40"E	966.90'

SURVEY OF A 234.55 ACRE TRACT IN FR#1 FR#2 AND FR#6 IN T6 R12 ROME TWP. ATHENS CO. OHIO THIS SURVEY IS PART OF A FOURTH TRACT TRACT AS RECORDED IN VOL 267 PG 644 ATHENS COUNTY DEED RECORDS AND BASED ON A FIELD SURVEY IN 12/85

John M Branner
 JOHN M BRANNER R.L.S. 6805
 RT#3 ATHENS O. 614-592-5778

11