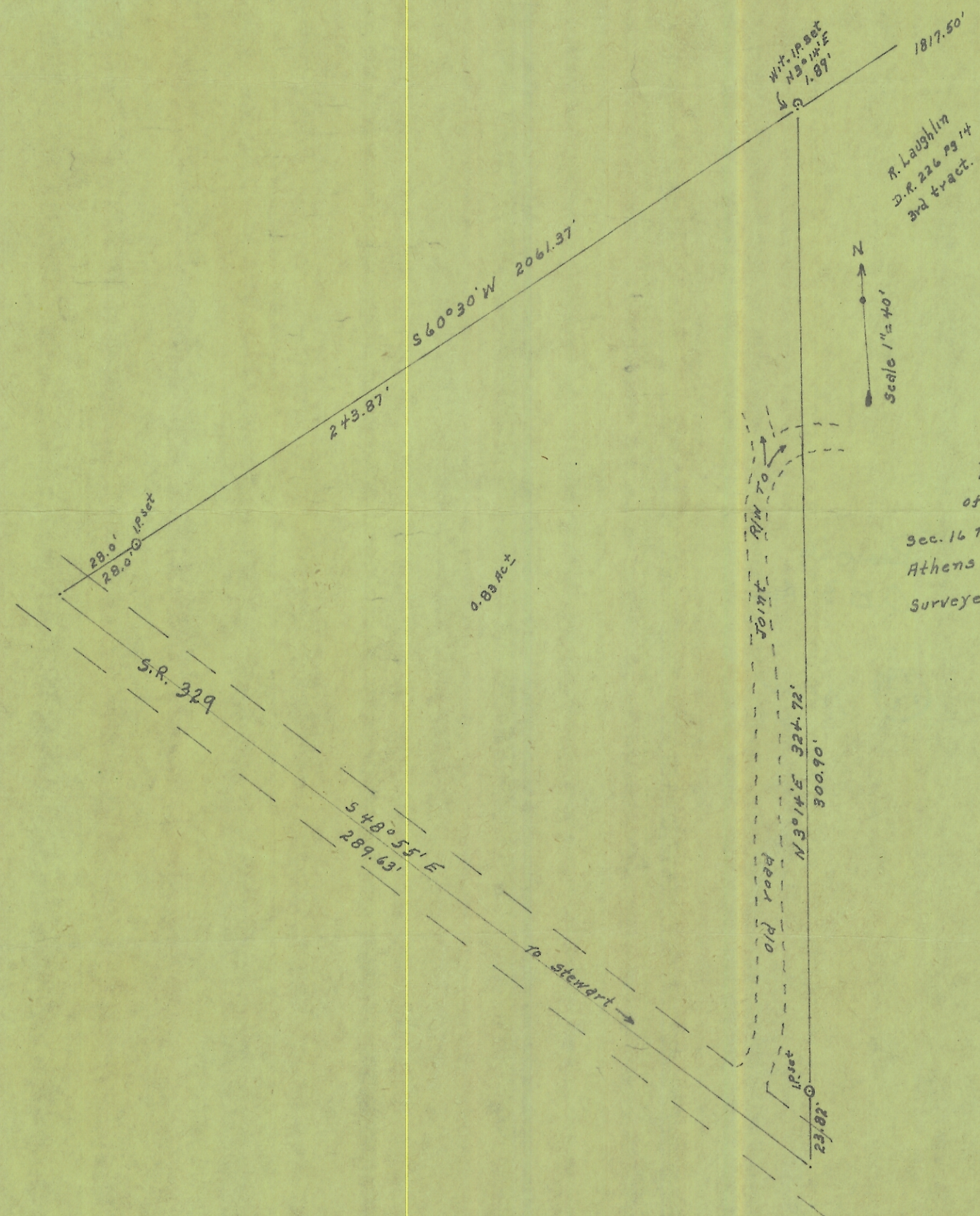


old stone
NW. Cor.
Lot #4
Sec. 16
Rome Twp.



PLAT
of a part of
Sec. 16 T. 6, R. 12, Rome Twp.
Athens Co. Ohio
Surveyed for Chas. Brown
2-27-63
by Joe L. Galvin
Reg. Sur. 1684.

0.89 Ac±

S.R. 329

S48°55'E
289.63'

to Stewart →

Joint
R/W to

Bearing P/O

1/2 set

Wit. 1/2 set
N 30 1/4 E
1.89'

N
Scale 1"=40'

R. Laughlin
D.R. 226 pg 14
3rd tract.

1817.50'

N3°14'E 324.72'

300.90'

23.82'