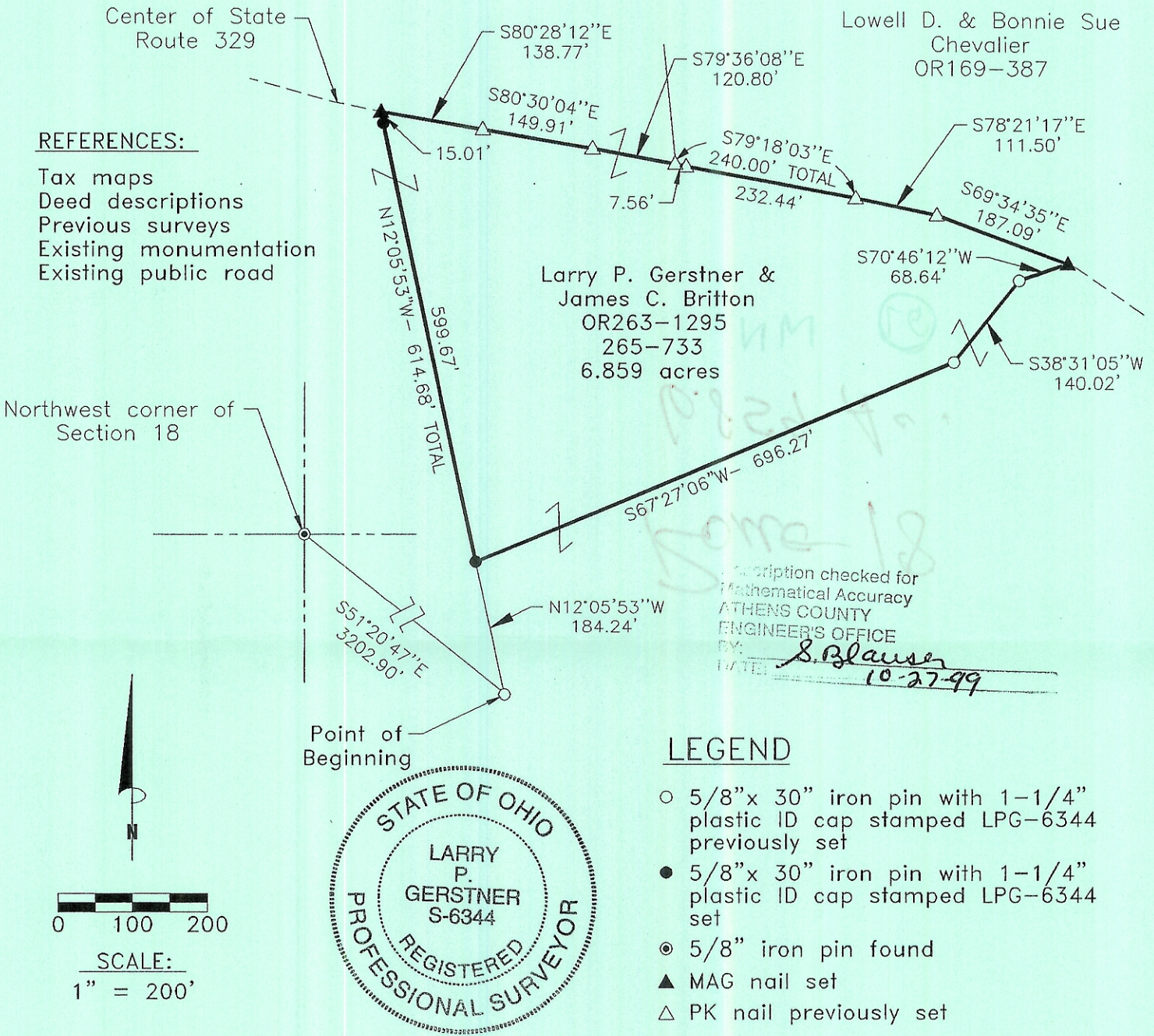


(MAIORANA)

PLAT OF A 6.859 ACRE TRACT ON STATE ROUTE 329

Situated in Rome Township, Athens County, Ohio; being part of Section 18, Township 6, Range 12.



Survey by:

Larry P. Gerstner - Engineering and Surveying
 9 East Second Street, Suite A, Logan, Ohio 43138
 (740) 385-4260

Larry P. Gerstner
 Registered Surveyor No. 6344