

BOWMAN AND ASSOCIATES  
91 BASIN STREET  
FRAZEYSBURG, OHIO 43822  
614-828-2204

SURVEY DESCRIPTION  
FOR  
BETTY & CHARLES LOVE

Situated in the Northwest quarter of Section #8, T-11, R-14, Ohio Company Purchase, Trimble Township, Village of Trimble, Athens County, Ohio. Being the lands of Betty and Charles Love as conveyed in Official Record Book 82, page 341 of the Athens County Deed records and being more particularly described as follows:

Beginning at an iron pin set at the intersection of the West Corporation line of Trimble with the centerline of Kennedy Road; thence, N.00°03'33"W. a distance of 185.30 feet along the West line of said corporation to a point in the center of Sunday Creek, passing a set iron pin at 132.09 feet; thence, following the center of Sunday Creek the next eleven courses and distances, S.41°44'52"E. a distance of 69.88 feet to a point; thence, S.36°20'15"E. a distance of 80.89 feet to a point; thence, S.47°32'32"E. a distance of 106.01 feet to a point; thence, S.51°21'49"E. a distance of 161.50 feet to a point; thence, S.56°16'12"E. a distance of 108.84 feet to a point; thence, N.72°58'58"E. a distance of 34.20 feet to a point; thence, S.80°50'26"E. a distance of 178.80 feet to a point; thence, S.70°34'01"E. a distance of 147.34 feet to a point; thence, S.48°55'37"E. a distance of 590.44 feet to a point; thence, on a curve to the right a distance of 376.86 feet (Chord S.11°04'05"E. 355.06 feet, radius 317.00') to a point; thence, S.34°31'06"W. a distance of 294.69 feet to the Northeast corner of the Glouster Community Bank lands (O.R. 89/805); thence, N.79°38'49"W. a distance of 135.84 feet along said bank lands to a 24" Locust tree, passing a set iron pin at 25.84 feet and at 125.84 feet; thence, N.15°23'49"W. a distance of 178.20 feet along the East line of M. Heiser (O.R. 22/482) to a found iron pin, passing a set iron pin at 10.00 feet; thence, N.83°38'49"W. a distance of 99.00 feet along the North line of said Heiser to a set iron pin; thence, S.02°56'11"W. a distance of 72.60 feet along the west line of said Heiser lands to a set iron pipe; thence, N.07°03'49"W. a distance of 67.00 feet M. Heiser lands (O.R. 73/981) to a set iron pipe; thence, N.83°48'49"W. a distance of 167.50 feet along the North line of said Heiser and P. McIntosh (353/167) to a set iron pipe on the East line of Mill Street; thence, N.07°03'49"W. a distance of 368.00 feet along said street to a set iron pipe; thence, N.83°48'49"W. a distance of 274.82 feet along the North line of the original Village of Glouster (P.B.2 Pg. 40) to a point in the center of Kennedy Road, passing a set iron pipe at 242.82 feet; thence, N.28°11'44"W. a distance of 343.01 feet along the centerline of said road to a point; thence, N.26°12'07"W. a distance of 328.97 feet along the centerline of said road to the point of beginning

The above described parcel contains 15.420 acres, more or less, and is subject to all legal easements and right of ways. North is based upon an assumed meridian. All set iron pins are 3/4" x 30" pipes with I.D. caps.

Description prepared from an actual field survey by Bowman & Associates, Stephen M. Bowman, P.S.#7135. March 27, 1991

Description checked for  
Mathematical Accuracy  
ATHENS COUNTY  
ENGINEER'S OFFICE  
BY: Cheryl Hedges  
DATE: 4/5/91

See 8

29

# BOWMAN AND ASSOCIATES

91 BASIN STR. FRAZEYSBURG, OHIO 43822 (614) 828-2204

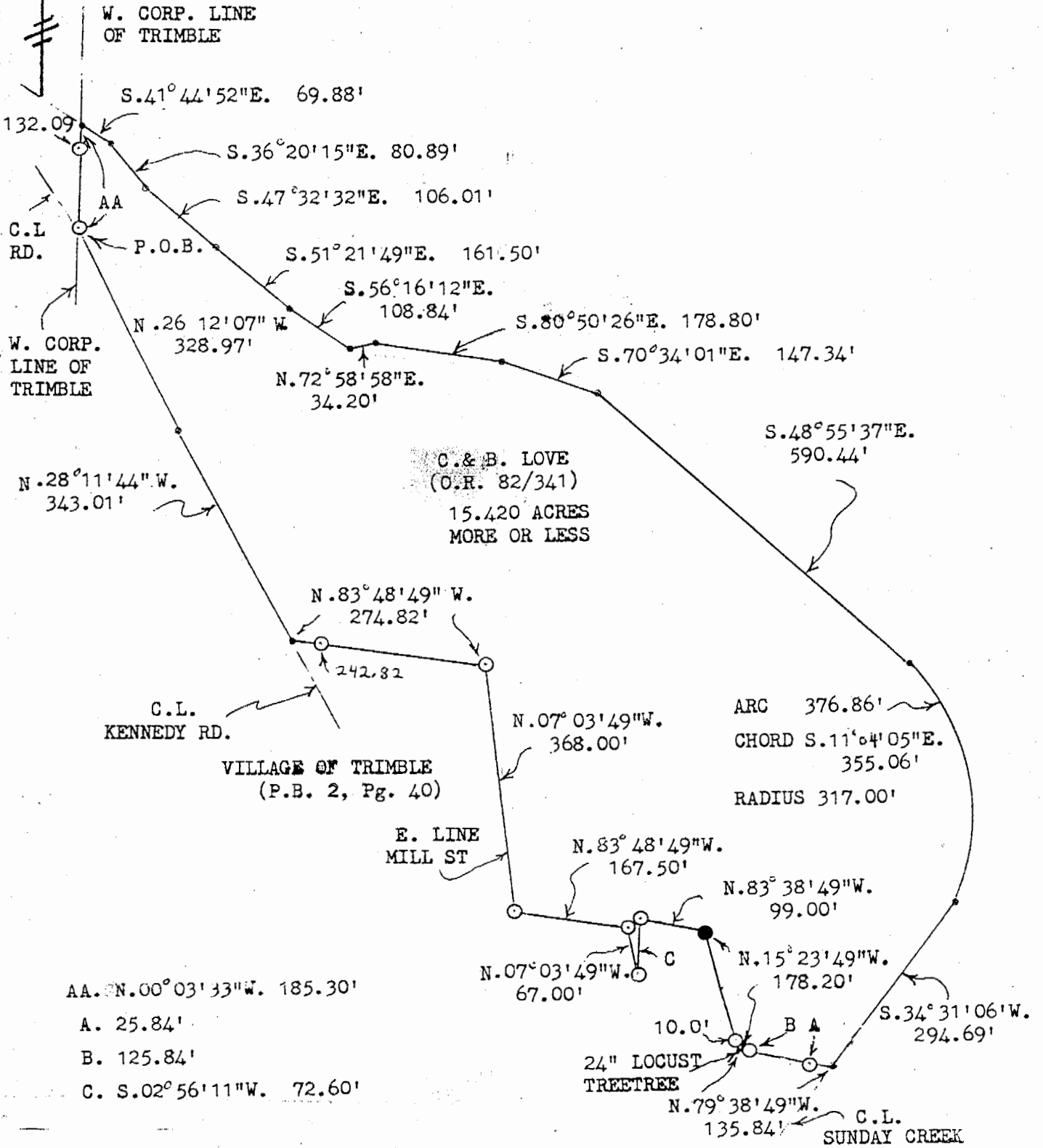
0' 200' 400'



SCALE 1" = 200.0'

## SURVEY PLAT FOR CHARLES & BETTY LOVE

SITUATED IN THE N.W. 1/4, SEC. #8, T-11, R-14, TRIMBLE TOWNSHIP, VILLAGE OF TRIMBLE, ATHENS COUNTY, OHIO. BEING THE LANDS OF CHARLES & BETTY LOVE AS CONVEYED IN OFFICIAL RECORD BOOK 82 PAGE 341 OF THE ATHENS COUNTY DEED RECORDS.



- AA. N.00°03'33"W. 185.30'
- A. 25.84'
- B. 125.84'
- C. S.02°56'11"W. 72.60'

### LEGEND

- ⊙ 3/4" x 30" PIPE W/I.D. CAP SET
- IRON PIN FOUND
- CENTERLINE CREEK
- CENTERLINE KENNEDY ROAD

NORTH IS BASED UPON AN ASSUMED MERIDIAN

*Stephen M. Bowman*

STEPHEN M. BOWMAN, P.S. #7135

4-04-91

DATE

30