


DESCRIPTION OF A 1.167 ACRE TRACT

Situated in Section 13, T.11, R.13, Trimble Township, Athens County, Ohio and being a part of a 1.3 acre tract described in Volume 358, Page 69, and part of a 2.857 acre tract described in Volume 377, Page 225, Athens County Deed Records and being more particularly described as follows:

Commencing at a stone at the Southeast corner of Section 13, thence, along the south-line of said section N 86°17'W, 901.00' to an iron pin in Grantor's south-line, said pin being the point of beginning for the tract of land herein described:

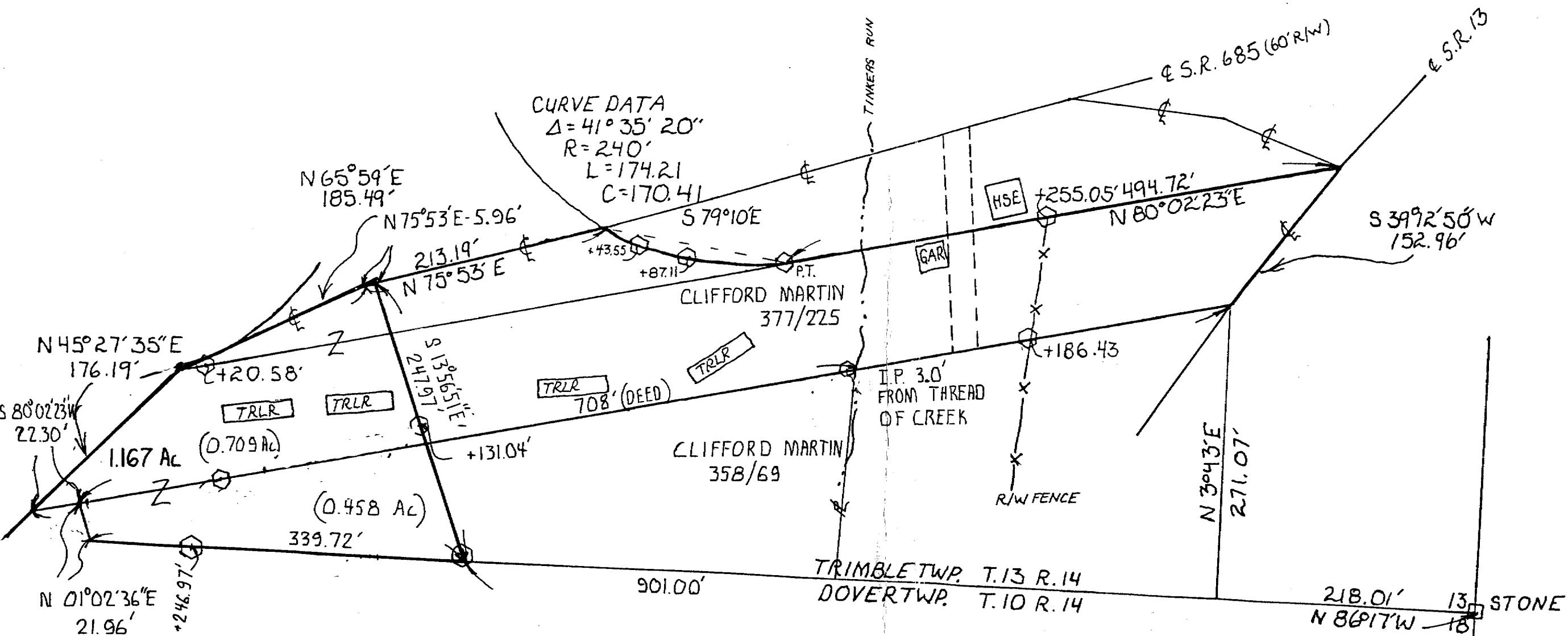
Thence, continuing N 86°17'W, 339.72' to the Grantor's South-west corner, passing an iron pin set at 246.97'; thence, N 01°02'36"E, 21.96' to a point in the south-line of the former Penn Central Corp. Property; thence, along the south-line S 80°02'23"W, 22.30' to a point in the center of State Route 685; thence, along said road, N 45°27'35"E, 176.19' to a point, (iron pin bears N 80°02'23"E, 20.58'); thence, N 65°59'E, 185.49' to a point; thence, N 75°53'E, 5.96' to a point; thence, leaving said road, S 13°56'51"E, 247.97' to the point of beginning, passing an iron pin at 131.04', and containing 1.167 acres of which 0.458 acres are out of the tract in Volume 358, Page 69, and 0.709 acres are out of the tract in Volume 377, Page 225, formerly Penn Central Corp. Property.

Subject to all easements and rights of way of record.

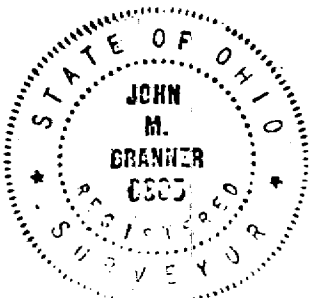

John M. Branner
Reg. Surveyor#6805

TRM 13

28



SURVEY OF A 1.167 Ac. TRACT
 IN SEC. 13, T. 11, R. 14, TRIMBLE
 TWP., ATHENS Co., OHIO
 FOR CLIFF MARTIN
 MARCH 84



John M. Branner
 JOHN M. BRANNER
 RLS 6805



□ STONE FOUND
 ○ IRON PIN SET
 SCALE: 1 inch = 100'

PREPARED BY:
 BRANNER SURVEYING
 ROUTE 3
 ATHENS OHIO
 (614) 592-5778