



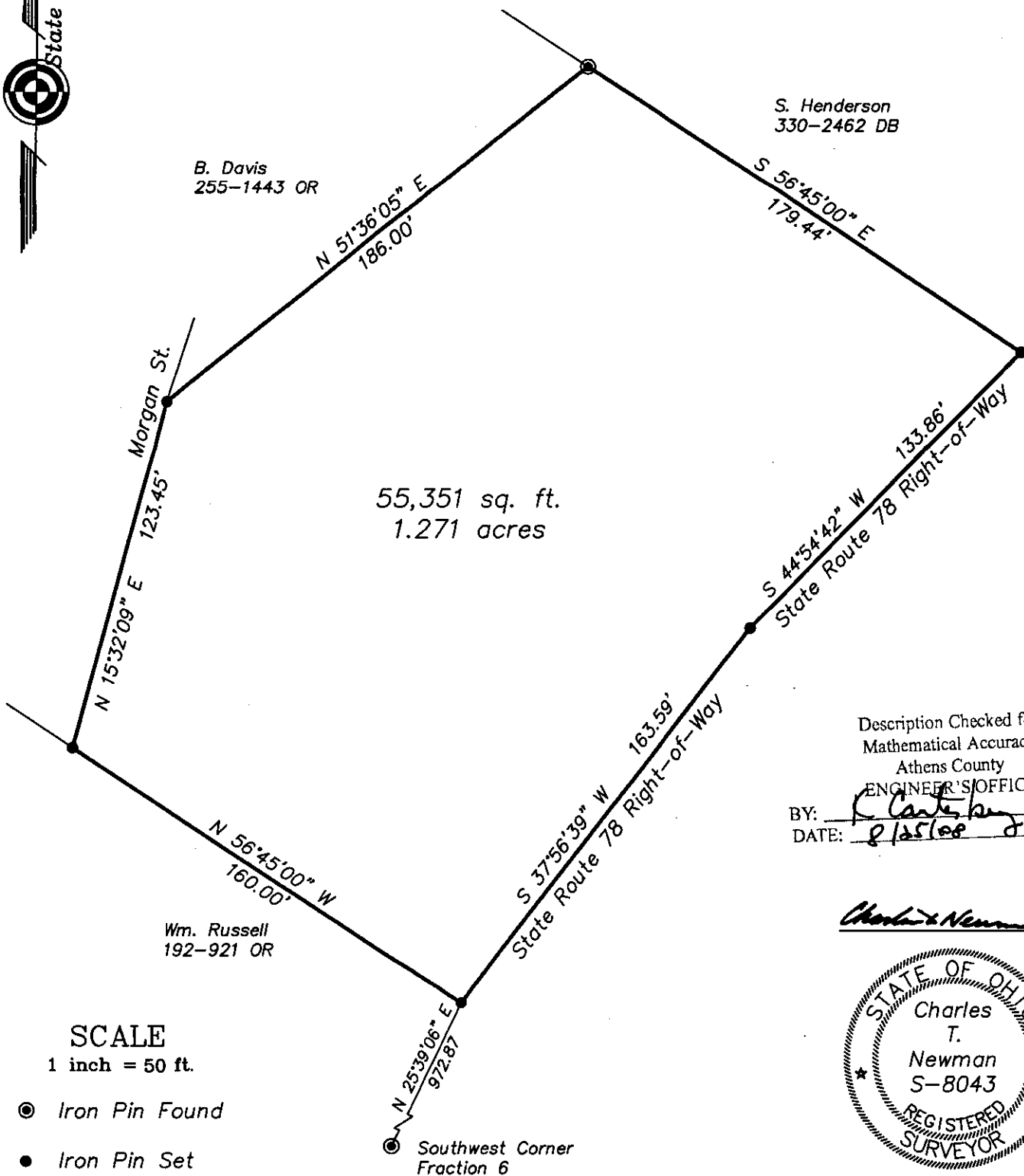
NEWMAN SURVEYING

66 Elmwood Place
Athens, Ohio 45701

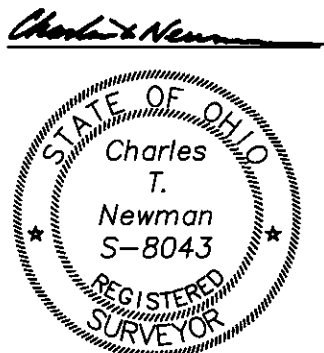
740-594-1884
FAX 740-594-9413



Plat of Survey 1.271 Acres
Situated in Fractional Section 6, Town 11, Range 14,
Village of Glouster, Trimble Township, Athens County, Ohio
Surveyed August 2008 for:
Joseph McCune



Description Checked for
 Mathematical Accuracy
 Athens County
 ENGINEER'S OFFICE
 BY: Charles T. Newman
 DATE: 8/25/08



SCALE

1 inch = 50 ft.

- ⊙ Iron Pin Found
- Iron Pin Set