

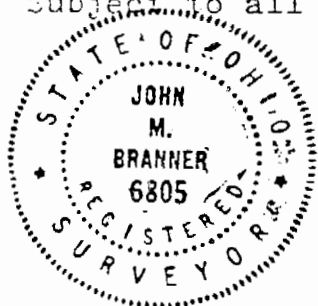
DESCRIPTION OF A 1.001 ACRE TRACT

Situated in the Village of Hollister, Fraction 18, T.11,R.14, Trimble Township, Athens County, Ohio and being a part of a tract of land recorded in Volume 358, Page 273, Athens County Deed Records and being more particularly described as follows:

Commencing at the Northeast corner of Lot 43, Village of Hollister; thence along the North line of said lot ,N 57°47'45" W, 150.00' to a point; thence, N 32°12'13" E, 217.70' to a point; thence, N 57°47'45" W, 180.00' to a point; thence, S 32°12'08" W, 187.70' to a point; thence, N 57°47'45" W, 124.00' to a point; thence, S 32°12'15" W, 175.50' to a point ; thence, N 57°47'43" W, 46.00' to a point; thence, S 32°09'48" W, 5.00' to a point; N 57°47'39" W, 50.00' to a point; thence, N 30°27'26" E, 45.00' to an iron pin in the South east corner of the 1.0 acre School Lot; thence, N 52°02'24" W, 118.39' to an iron pin in the South west corner of a 0.619 acre tract; thence along the West-line of said tract , N 30°44'38" W, 106.85' to an iron pin in the Northwest corner of said tract; thence, N 59°15'22" W, 14.00' to the point of beginning for the tract of land herein described:

Thence, S 30°44'38" W, 136.04' to a point in the Public Road, passing an iron pin set at 116.04'; thence along said road, N 50°01' W, 233.74' to a point; thence leaving said road, N 26°12'15" E, 192.59' to an iron pin set; thence, S 47°13' E, 251.48' to an iron pin set; thence, S 30°44'38" W, 40.96' to the point of beginning and containing 1.001 acres , of which 0.22 acres is out of the School Lot.

Subject to all easements and rights of way of record

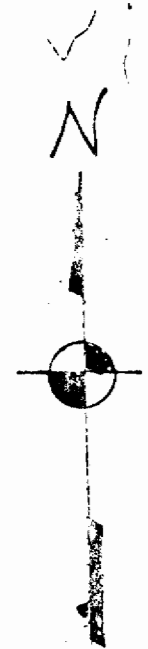


John M. Branner
John K. Branner - Registered Surveyor-6805

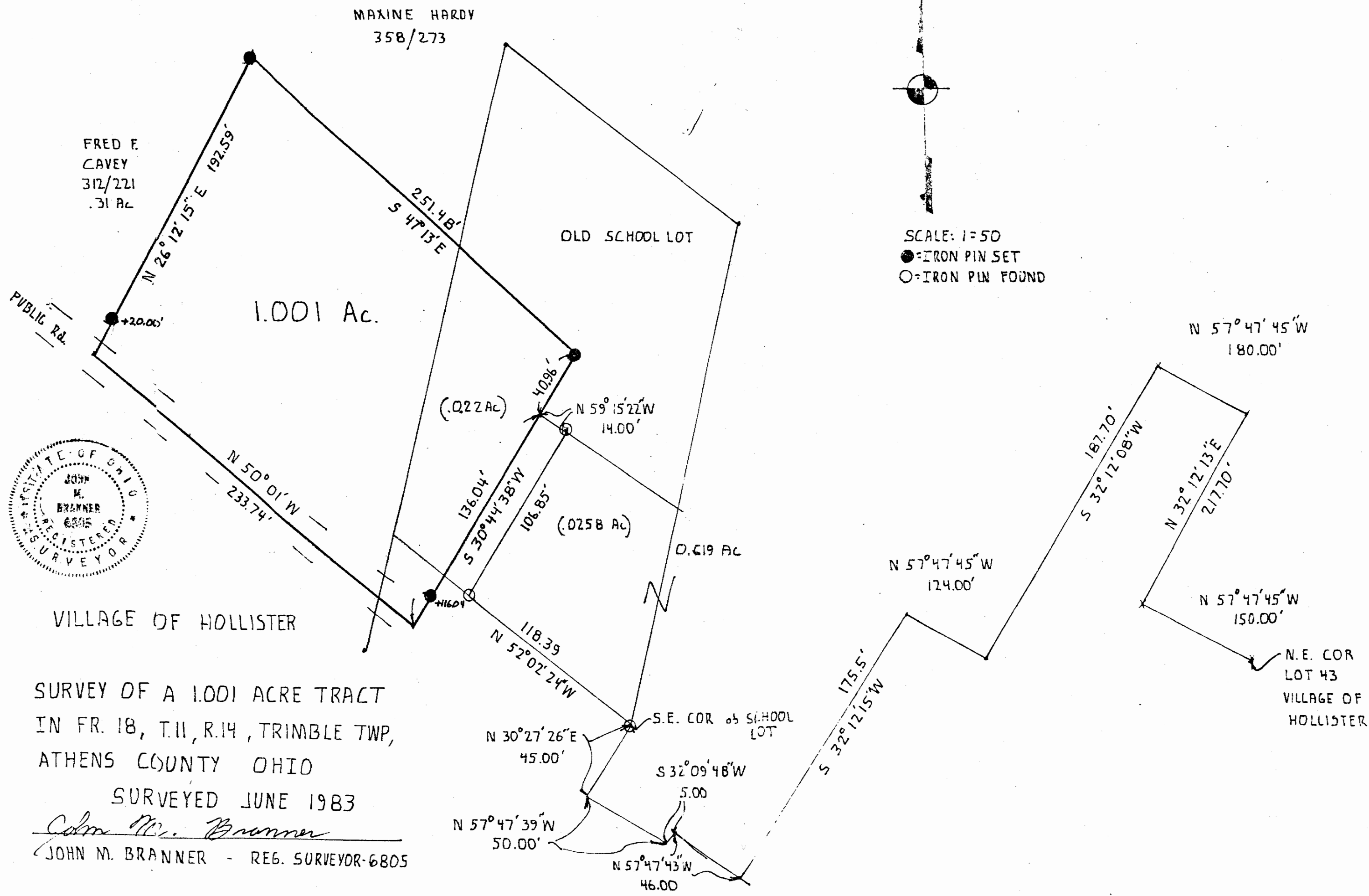
• Description checked for
Mathematical Accuracy
ATHENS COUNTY
ENGINEER'S OFFICE
BY *Bob Shields*
DATE 7-7-83

TRM sec 21 Sec #21

32



SCALE: 1=50
●=IRON PIN SET
○=IRON PIN FOUND



MAXINE HARDY
358/273

FRED F. CAVEY
312/221
.31 AC

1.001 Ac.

OLD SCHOOL LOT

PUBLIC RD.



VILLAGE OF HOLLISTER

SURVEY OF A 1.001 ACRE TRACT
IN FR. 18, T.11, R.14, TRIMBLE TWP,
ATHENS COUNTY OHIO

SURVEYED JUNE 1983

John M. Branner
JOHN M. BRANNER - REG. SURVEYOR-6805

N 57° 47' 45" W
180.00'

187.70'
S 32° 12' 08" W

N 32° 12' 13" E
217.70'

N 57° 47' 45" W
150.00'

N.E. COR
LOT 43
VILLAGE OF
HOLLISTER

N 57° 47' 45" W
124.00'

175.5'
S 32° 12' 15" W

S.E. COR of SCHOOL LOT

N 30° 27' 26" E
45.00'

S 32° 09' 48" W
5.00

N 57° 47' 39" W
50.00'

N 57° 47' 43" W
46.00

(.022 AC)

(.0258 AC)

0.619 AC

251.48'
S 47° 13' E

40.96'

N 59° 15' 22" W
14.00'

136.04'

S 30° 44' 38" W

106.85'

N 50° 01' W
233.74'

+20.00'

H1604