

5570 Wayne National Forest
Potts, Beulah, A-0195
Small Tracts Act Conveyance

LEGAL DESCRIPTION OF LANDS
BEING CONVEYED TO BEULAH POTTS

TOWNSHIP 11 NORTH, RANGE 14 WEST, OHIO RIVER SURVEY
TRIMBLE TOWNSHIP, ATHENS COUNTY, OHIO

SECTION 28, FRACTIONAL LOT 24:

Beginning for Reference at a stone, found, at the Northeast corner of Fractional Lot 24; **thence** running with the East line of said Fractional Lot 24, S 3°47'05" W a distance of 299.970 feet (91.431 m) to a point; **thence** leaving said East line N 86°01'56" W a distance of 55.010 feet (16.767 m) to Corner 1, an unmonumented point in the centerline of State Route 78, said point being the the **True Point of Beginning**; **thence** N 86°01'56" W a distance of 71.664 feet (21.843 m) to Corner 2, a 1/2" rebar with plastic cap, found, on the edge of the right-of-way of State Route 78; **thence** N 86°01'56" W a distance of 148.180 feet (45.165 m) to Corner 3, a 1/2" rebar with plastic cap, found; **thence** S 08°27'55" E a distance of 42.288' feet (12.889 m) to Corner 4, a 1/2" rebar with plastic cap, found; **thence** S 65°18'30" E a distance of 284.619 feet (86.752 m) to Corner 5, a 1/2" rebar with plastic cap, found, in the creek; **thence** with the centerline of said creek the following 11 courses:

N 72°28'01" W a distance of 42.589 feet (12.981 m) to Corner 6;
N 72°35'34" W a distance of 49.522 feet (15.094 m) to Corner 7;
N 62°34'08" W a distance of 69.754 feet (21.261 m) to Corner 8;
N 68°06'07" W a distance of 50.093 feet (15.268 m) to Corner 9;
N 59°19'59" W a distance of 16.742 feet (5.103 m) to Corner 10;
N 74°58'16" W a distance of 41.616 feet (12.685 m) to Corner 11;
N 56°58'52" W a distance of 24.444 feet (7.451 m) to Corner 12;
N 01°18'33" W a distance of 25.820 feet (7.870 m) to Corner 13;
N 02°10'18" E a distance of 33.707 feet (10.274 m) to Corner 14;
N 06°21'59" W a distance of 40.942 feet (12.479 m) to Corner 15;
N 51°46'17" W, a distance of 25.392 feet (7.740 m) to Corner 16;

thence, leaving the centerline of said creek, N 28°32'20" E, passing a 3/4" x 36" rebar with aluminum cap stamped "Cor. A" at 17.870 feet (5.447 m), for a total distance of 46.341 feet (14.125 m) to the centerline of State Route 78; **thence** following the centerline of said State Route 78, S 61°45'21" E a distance of 258.246 feet (78.713 m) to the True Place of Beginning, and **containing 0.364 acres (0.147 hectares)**, more or less.

Prior Reference: Athens County Deed Volume 301/202.
Athens County Tax Parcel No. _____

Description checked for
Mathematical Accuracy
ATHENS COUNTY
ENGINEER'S OFFICE
BY: S. Blawie
DATE: 8-11-95

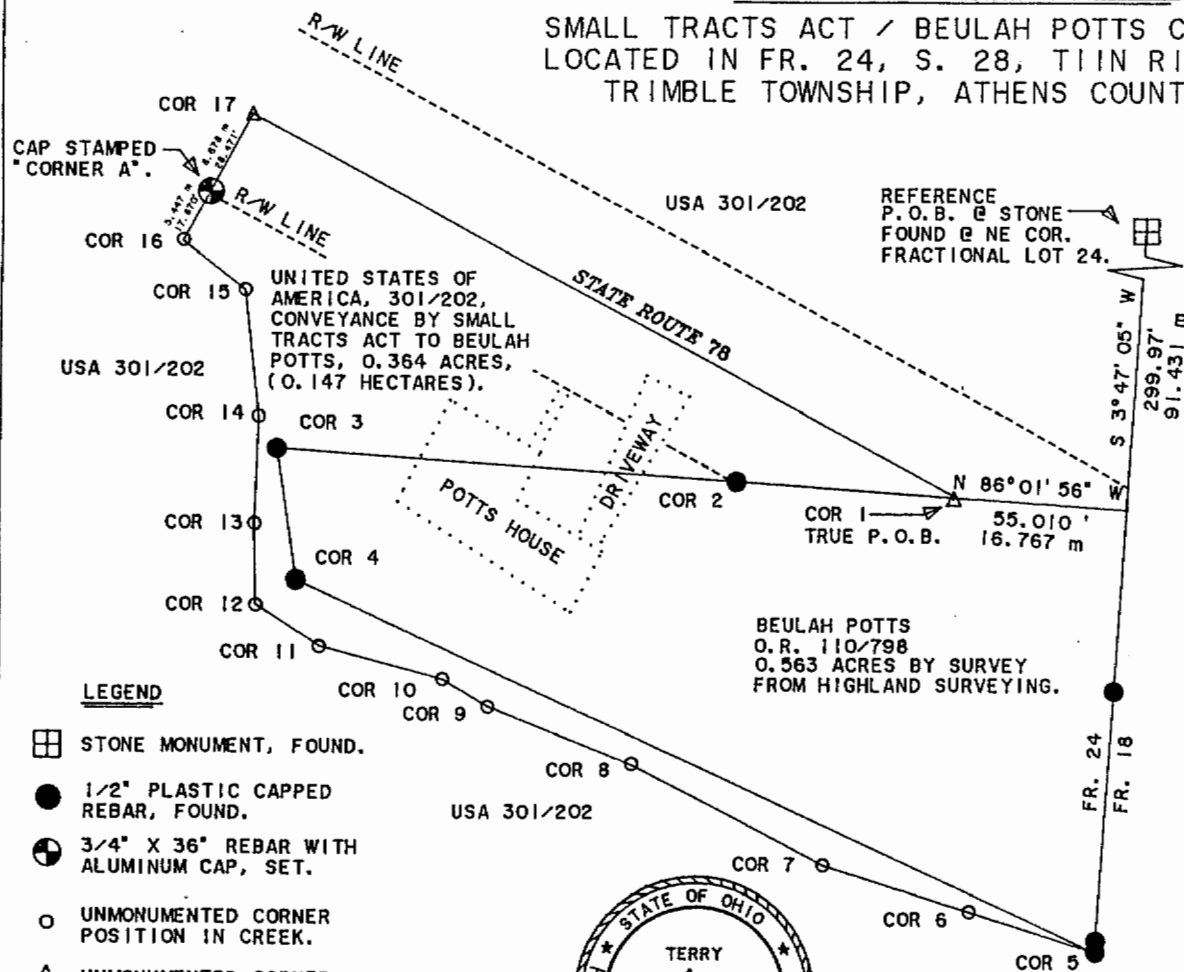
70

TRM # 28

71

PLAT OF SURVEY

SMALL TRACTS ACT / BEULAH POTTS CASE A-0195
 LOCATED IN FR. 24, S. 28, T11N R14W, O.R.S.
 TRIMBLE TOWNSHIP, ATHENS COUNTY, OHIO



BEARINGS WERE ALIGNED WITH KENNETH HIGHLAND SURVEY (P.S. 7581) OF SEPTEMBER, 1994.

COURSE	BEARING	DIST. FT.	DIST. M.
1-2	N 86°01' 56" W	71.664'	21.843 m
2-3	N 86°01' 56" W	148.180'	45.165 m
3-4	S 08°27' 55" E	42.288'	12.889 m
4-5	S 65°18' 30" E	284.619'	86.752 m
5-6	N 72°28' 01" W	42.589'	12.981 m
6-7	N 72°35' 34" W	49.522'	15.094 m
7-8	N 62°34' 08" W	69.754'	21.261 m
8-9	N 68°06' 07" W	50.093'	15.268 m
9-10	N 59°19' 59" W	16.742'	5.103 m
10-11	N 74°58' 16" W	41.616'	12.685 m
11-12	N 56°58' 52" W	24.444'	7.451 m
12-13	N 01°18' 33" W	25.820'	7.870 m
13-14	N 02°10' 18" E	33.707'	10.274 m
14-15	N 06°21' 59" W	40.942'	12.479 m
15-16	N 51°46' 17" W	25.392'	7.740 m
16-17	N 28°32' 20" E	46.341'	14.125 m
17-1	S 61°45' 21" E	258.246'	78.713 m

LEGEND

- STONE MONUMENT, FOUND.
- 1/2" PLASTIC CAPPED REBAR, FOUND.
- 3/4" X 36" REBAR WITH ALUMINUM CAP, SET.
- UNMONUMENTED CORNER POSITION IN CREEK.
- UNMONUMENTED CORNER POSITION IN HIGHWAY.



U.S.D.A. FOREST SERVICE, R-9 WAYNE NATIONAL FOREST

DATE OF FIELD SURVEY: _____

BY: _____

TERRY A. KRASKO, OHIO P.S. 6973/INDIANA P.L.S. 910017

PROJECT I.D.: _____

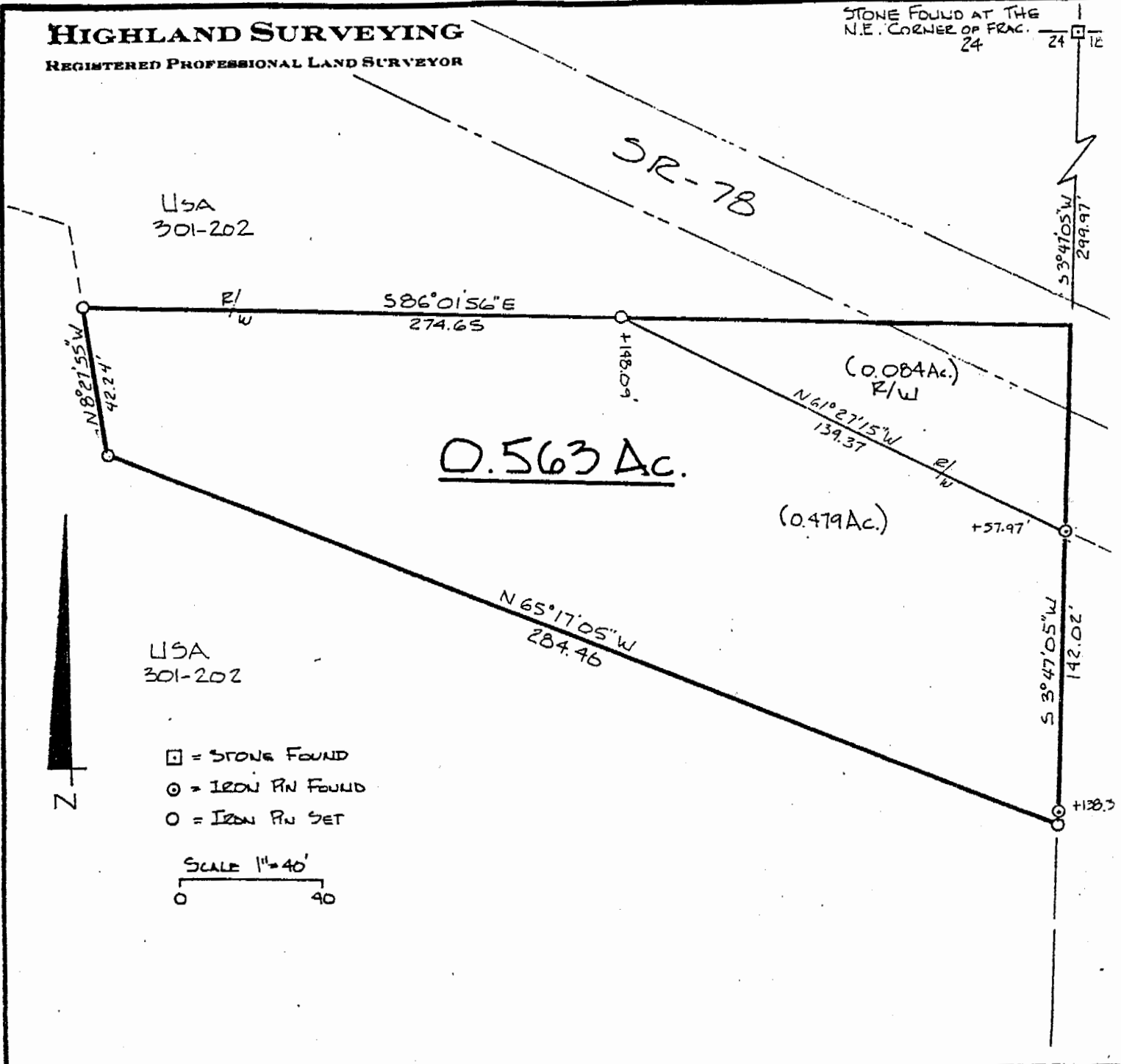
I certify that this survey was made at the request of a Line Officer at the Forest Supervisor's Office in Athens, Ohio.

BY: _____

FOREST SUPERVISOR
WAYNE NATIONAL FOREST

HIGHLAND SURVEYING
REGISTERED PROFESSIONAL LAND SURVEYOR

STONE FOUND AT THE
N.E. CORNER OF FRAC. 24



USA
301-202

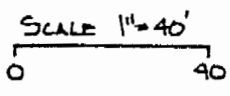
USA
301-202

0.563 Ac.

(0.084Ac.)
R/W

(0.479Ac.)

- ☐ = Stone Found
- ⊙ = Iron Pin Found
- = Iron Pin Set



PLAT of SURVEY OF 0.563 AC. TRACT
 SURVEYED for BEULAH POTTS
 SUBDIVISION FRAC. 24
 TOWNSHIP TRIMBLE SECTION 28 TOWN 11 RANGE 14
 CORPORATION _____ COUNTY ATHENS STATE OHIO
 SCALE 1" = 40' DATE SEPT 1994

KENNETH E. HIGHLAND
80 FAYETTE STREET
NELSONVILLE, OHIO 45764
614-753-1264

Kenneth E. Highland
Kenneth E. Highland S-7581



72