

EXHIBIT A
68.374 Acre Split

Situate in the State of Ohio, Athens County, Trimble Township, Sections 35 and 36, T11N, R14W, and being part of a 962.407 acre parcel recorded in O.R. 488, Page 176 of the Athens County Recorder's office and being more particularly described as follows:

Point of Beginning being an iron pin set at the northeast corner of Section 35, a point on the grantor's north line, the southwest corner of a 10.15 acre parcel conveyed to Scioto Land Company, LLC, a Delaware Limited Liability Company recorded in Official Record 392, Page 388 and the southeast corner of a 588.15 acre parcel conveyed to Scioto Land Company, LLC, a Delaware Limited Liability Company recorded in Official Record 392, Page 388;

Thence from the **Point of Beginning** South 04 degrees 00 minutes 36 seconds West for a distance of 852.35 feet along the east line of Section 35 to an iron pin set on the existing north right of way line of Wood Duck Road;

Thence along the existing north right of way line of Wood Duck Road the following three courses;

1. Along a curve to the left 115.84 feet having a radius of 265.20 feet, a delta of 25 degrees 01 minutes 35 seconds and a chord bearing of South 49 degrees 55 minutes 40 seconds West 114.92 feet to a point;
2. South 37 degrees 24 minutes 53 seconds West for a distance of 170.47 feet to a point;
3. Along a curve to the right 174.64 feet having a radius of 252.29 feet, a delta of 39 degrees 39 minutes 44 seconds and a chord bearing of South 57 degrees 14 minutes 45 seconds West 171.18 feet to a point;

Thence South 77 degrees 04 minutes 37 seconds West for a distance of 126.83 feet along the north right of way of Mallard Cove to a point;

Thence along the existing north right of way line of Mallard Cove with a curve to the left 134.42 feet having a radius of 50.00 feet, a delta of 154 degrees 02 minutes 04 seconds and a chord bearing of South 60 degrees 03 minutes 35 seconds West 97.44 feet to an iron pin set;

Thence South 73 degrees 02 minutes 33 seconds West for a distance of 781.82 feet across the grantor to the southeast corner of Lot 963 in Smoke Rise 1 recorded in Envelope 75 A & B;

Thence North 36 degrees 52 minutes 19 seconds West for a distance of 135.30 feet along the east line of Lot 963 in Smoke Rise 1 recorded in Envelope 75 A & B to the existing north right of way of Red Alder Road;

Thence along the existing north right of way of Red Alder Road the following four courses;

1. Along a curve to the left 132.34 feet having a radius of 50.00 feet, a delta of 151 degrees 38 minutes 49 seconds and a chord bearing of North 22 degrees 41 minutes 38 seconds West 96.95 feet to a point;

2. Along a curve to the right 19.93 feet having a radius of 25.00 feet, a delta of 45 degrees 40 minutes 13 seconds and a chord bearing of North 75 degrees 40 minutes 55 seconds West 19.40 feet to a point;

3. Along a curve to the left 30.35 feet having a radius of 444.23 feet, a delta of 03 degrees 54 minutes 53 seconds and a chord bearing of North 54 degrees 48 minutes 15 seconds West 30.35 feet to a point;

4. Along a curve to the right 36.92 feet having a radius of 25.00 feet, a delta of 84 degrees 37 minutes 28 seconds and a chord bearing of North 14 degrees 26 minutes 58 seconds West 33.66 feet to a point;

Thence North 27 degrees 51 minutes 46 seconds East for a distance of 97.50 feet to a point along the east right of way of Birch Cove;

Thence along the north right of way of Birch Cove along a curve to the left 261.80 feet having a radius of 50.00 feet, a delta of 300 degrees 00 minutes 00 seconds and a chord bearing of North 62 degrees 08 minutes 14 seconds West 50.00 feet to a point;

Thence South 27 degrees 51 minutes 46 seconds West for a distance of 98.80 feet along the west right of way of Birch Cove to a point;

Thence along the west right of way of Birch Cove along a curve to the right 36.28 feet having a radius of 25.00 feet, a delta of 83 degrees 08 minutes 27 seconds and a chord bearing of South 69 degrees 25 minutes 59 seconds West 33.18 feet to a point;

Thence along the existing north right of way of Red Alder Road the following fourteen course;

1. Along a curve to the left 57.06 feet having a radius of 444.23 feet, a delta of 07 degrees 21 minutes 36 seconds and a chord bearing of North 72 degrees 40 minutes 35 seconds West 57.02 feet to a point;

2. North 76 degrees 21 minutes 23 seconds West for a distance of 18.52 feet to a point;
 3. Along a curve to the right 166.24 feet having a radius of 194.24 feet, a delta of 49 degrees 02 minutes 13 seconds and a chord bearing of North 51 degrees 50 minutes 16 seconds West 161.21 feet to a point;
 4. North 27 degrees 19 minutes 10 seconds West for a distance of 133.78 feet to a point;
 5. Along a curve to the left 208.80 feet having a radius of 366.96 feet, a delta of 32 degrees 36 minutes 03 seconds and a chord bearing of North 43 degrees 37 minutes 11 seconds West 205.99 feet to a point;
 6. North 59 degrees 55 minutes 13 seconds West for a distance of 355.56 feet to a point;
 7. Along a curve to the left 203.39 feet having a radius of 1347.28 feet, a delta of 08 degrees 38 minutes 59 seconds and a chord bearing of North 64 degrees 14 minutes 42 seconds West 203.20 feet to a point;
 8. North 68 degrees 34 minutes 12 seconds West for a distance of 77.31 feet to a point;
 9. Along a curve to the right 161.67 feet having a radius of 172.34 feet, a delta of 53 degrees 44 minutes 50 seconds and a chord bearing of North 41 degrees 41 minutes 47 seconds West 155.80 feet to a point;
 10. North 14 degrees 49 minutes 22 seconds West for a distance of 234.43 feet to a point;
 11. Along a curve to the right 186.60 feet having a radius of 445.77 feet, a delta of 23 degrees 59 minutes 05 seconds and a chord bearing of North 02 degrees 49 minutes 49 seconds West 185.24 feet to a point;
 12. North 09 degrees 09 minutes 43 seconds East for a distance of 72.39 feet to a point;
 13. Along a curve to the right 177.35 feet having a radius of 774.91 feet, a delta of 13 degrees 06 minutes 48 seconds and a chord bearing of North 15 degrees 43 minutes 07 seconds East 176.97 feet to a point;
 14. Along a curve to the right 44.89 feet having a radius of 25.00 feet, a delta of 102 degrees 53 minutes 05 seconds and a chord bearing of North 73 degrees 43 minutes 03 seconds East 39.10 feet to a point on the existing south right of way line of Red Alder Cove;
- Thence South 54 degrees 50 minutes 24 seconds East for a distance of 415.13 feet along the existing south right of way of Red Alder Cove to a point;
- Thence along the existing south right of way of Red Alder Cove with a curve to the left 261.80 feet having a radius of 50.00 feet, a delta of 300 degrees 00 minutes 00 seconds and a chord bearing of

North 35 degrees 09 minutes 36 seconds East 50.00 feet to a point on the north right of way of Red Alder Cove;

Thence North 54 degrees 50 minutes 24 seconds West for a distance of 108.34 feet along the existing north right of way of Red Alder Cove to an iron pin set on the north line of Section 35;

Thence South 86 degrees 44 minutes 10 seconds East for a distance of 789.83 feet along the north line of Section 35 and the south line of Section 36 to an iron pin found on the south line of a 588.15 acre parcel conveyed to Scioto Land Company, LLC, a Delaware Limited Liability Company recorded in Official Record 392, Page 388;

Thence South 86 degrees 44 minutes 10 seconds East for a distance of 1572.92 feet along the north line of Section 35, the south line of Section 36, the south line of a 588.15 acre parcel conveyed to Scioto Land Company, LLC, a Delaware Limited Liability Company recorded in Official Record 392, Page 388 and the grantor's north line to the **Point of Beginning**.

Containing **68.374** acres more or less. 53.568 acres in Auditor's Permanent Parcel Number M010010090500 which presently contains 65.850 acres and 14.806 acres in Auditor's Permanent Parcel Number M020350364600 which presently contains 475.179 acres.

Subject to all legal easements and rights of way including public and private roads as shown on Smoke Rise 1 and 2 as recorded in Athens County Recorder's office in Envelope 75 A & B.

Plat of survey is attached hereto and made a part thereof.

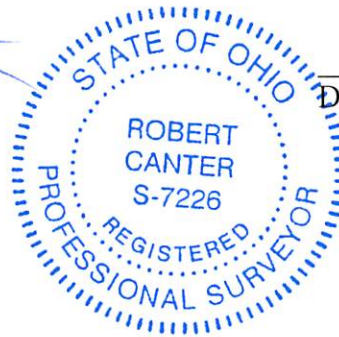
All iron pins set are 3/4"D x 30"L rebar with a cap stamped Canter S 7226.

This description was prepared under the direction and supervision of Robert C. Canter, Registered Surveyor No. 7226 and is based on a field survey made by Canter Surveying/GPS Services, Inc., completed May 2013.

Prior Instrument Reference: O.R. 488, Pg. 176, of the Athens County Recorder's Office.

Bearings are NAD 83(CORS), Ohio State Plane, South Zone Grid. Based on GPS observations. Reference the north line of Section 35 as being South 86 degrees 44 minutes 10 seconds East.

Robert C. Canter
Robert C. Canter, P.S. 7226



11-1-13
Date

Registration Checked for
Mathematical Accuracy
Athens County
RECORDER'S OFFICE
By: [Signature]
Date: 11/13/13

Legal Description Pre-Approval
APPROVED
All transfers are subject to
Athens County Conveyance Standards

NOV 15 2013

Jill Thompson
Athens County Auditor

SITUATE IN THE STATE OF OHIO, ATHENS COUNTY, TRIMBLE TOWNSHIP, SECTION 35 & 36, T11N, R14W AND BEING PART OF 962.407 ACRE PARCEL RECORDED IN O.R. 488, PG. 176

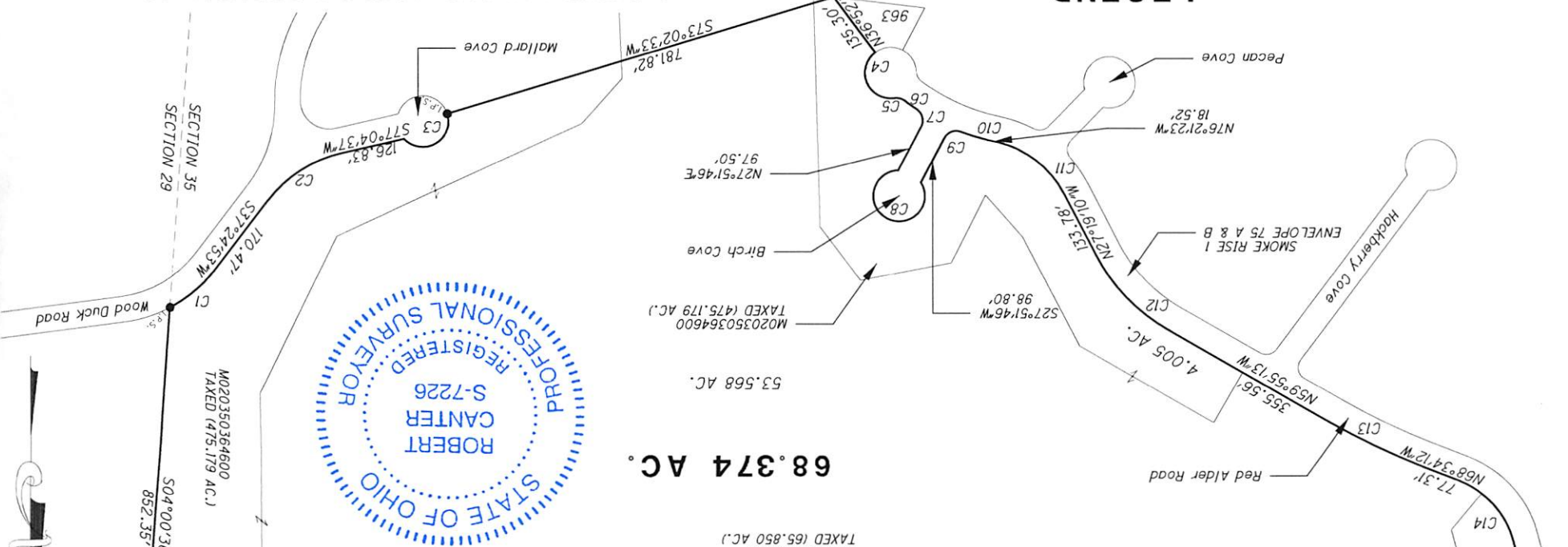
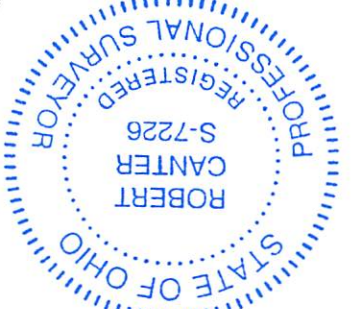
BEARINGS ARE NAD 83(CORS) BASED ON GPS OBSERVATIONS. REFERENCE THE NORTH LINE OF SECTION 35 AS BEING S86°44'10"E. 35 AS BEING S86°44'10"E.

SCOTO LAND COMPANY, LLC, A DELAWARE LIMITED LIABILITY COMPANY
 O.R. 392, PAGE 388
 M010010090600
 588.15 AC.

DELTAWARE LIMITED LIABILITY COMPANY
 O.R. 488, PG. 176
 M010010090500
 TAXED (65.850 AC.)

POINT OF BEGINNING
 NE CORNER SECTION 35

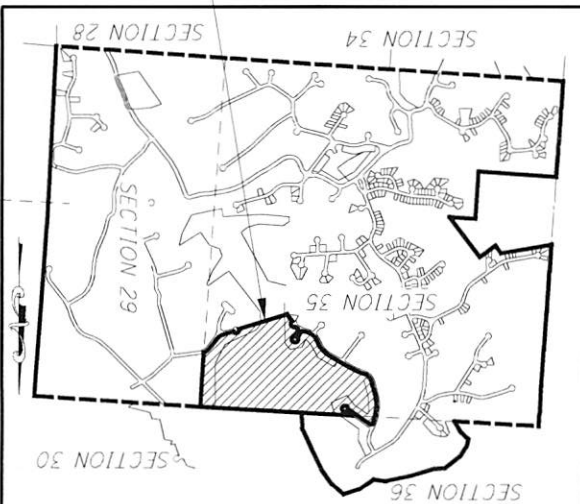
Description Checked for
 Mathematical Accuracy
 Athens County
 ENGINEER'S OFFICE
 BY: *Robert Cantner*
 DATE: 11/13/13



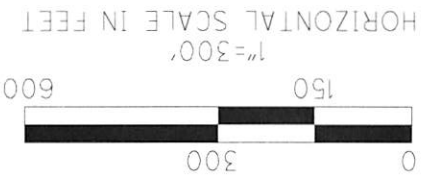
LEGEND

Q.I.R.F. IRON PIN FOUND
 3/4" x 30" IRON PIN SET WITH A CAP STAMPED CANTER S 7226
 I.R.S. ●

SURVEYED MAY 2013 UNDER THE DIRECTION OF ROBERT C. CANTER, P.S. 7226. SUBJECT TO ALL LEGAL EASEMENTS, LEASES AND RIGHTS OF WAY.
Robert Cantner
 11-1-13
 DATE
 ROBERT C. CANTER, PS 7226



CURVE	DELTA	RADIUS	LENGTH	CHORD
C1	25°01'35" (LT)	115.84'	265.20'	115.84'
C2	39°39'44" (RT)	252.29'	174.64'	171.18'
C3	154°02'04" (LT)	50.00'	134.42'	97.44'
C4	151°38'49" (LT)	50.00'	132.34'	96.95'
C5	45°40'13" (RT)	25.00'	19.93'	19.40'
C6	03°54'53" (LT)	30.35'	444.23'	30.35'
C7	84°37'28" (RT)	25.00'	36.92'	33.66'
C8	300°00'00" (LT)	50.00'	261.80'	50.00'
C9	83°08'27" (RT)	25.00'	36.28'	33.18'
C10	07°21'36" (LT)	444.23'	57.06'	57.02'
C11	49°02'13" (RT)	194.24'	166.24'	161.21'
C12	32°36'03" (LT)	208.80'	366.96'	205.99'
C13	08°38'59" (LT)	1347.28'	203.39'	203.20'
C14	53°44'50" (RT)	172.34'	161.67'	155.80'
C15	23°59'05" (RT)	445.77'	186.60'	185.24'
C16	13°06'48" (RT)	774.91'	177.35'	176.97'
C17	102°53'05" (RT)	25.00'	44.89'	39.10'
C18	300°00'00" (LT)	50.00'	261.80'	50.00'



6801 SR 56
 ATHENS, OHIO 45701
 740-592-5706

13029 SPLIT 12.DGN