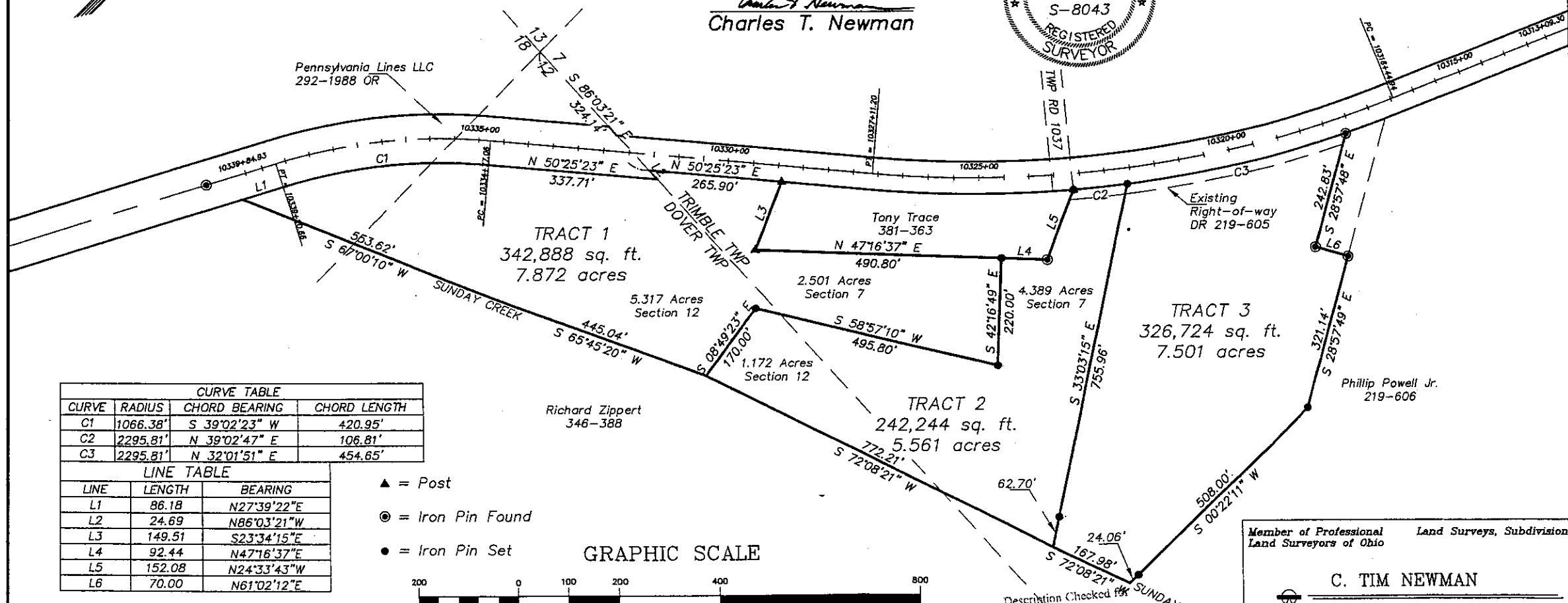
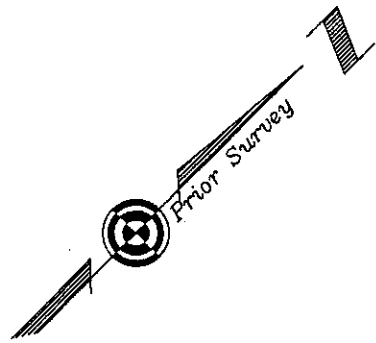
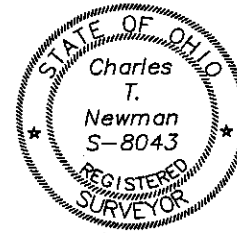


Plat of Survey of 3 Tracts
 Being part of Outlot 60 in the Village of Jacksonville
 Situated in Section 7 of Trimble Township, Town 11,
 Range 14 and Sections 12 and 18 of Dover Township,
 Town 10, Range 14, Athens County, Ohio
 Surveyed June 2007 for:
 Jack Jago

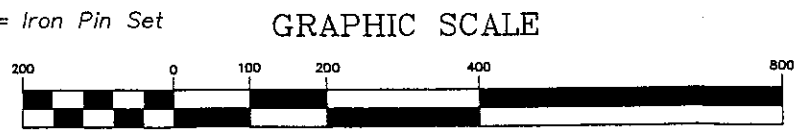
Charles T. Newman
 Charles T. Newman



CURVE TABLE			
CURVE	RADIUS	CHORD BEARING	CHORD LENGTH
C1	1066.38'	S 39°02'23" W	420.95'
C2	2295.81'	N 39°02'47" E	106.81'
C3	2295.81'	N 32°01'51" E	454.65'

LINE TABLE		
LINE	LENGTH	BEARING
L1	86.18	N27°39'22"E
L2	24.69	N86°03'21"W
L3	149.51	S23°34'15"E
L4	92.44	N47°16'37"E
L5	152.08	N24°33'43"W
L6	70.00	N61°02'12"E

- ▲ = Post
- ⊙ = Iron Pin Found
- = Iron Pin Set



(IN FEET)
 1 inch = 200 ft.

Description Checked for
 Mathematical Accuracy
 Athens County
 ENGINEER'S OFFICE
 BY: *J. Blau*
 DATE: 7-13-07

Member of Professional Land Surveys, Subdivisions
 Land Surveyors of Ohio

C. TIM NEWMAN
 Professional Surveyor

66 Elmwood Place Athens, Ohio 45701 740-594-1884
 FAX 740-594-9413