

BRANNER SURVEYING

MEMBER-PROFESSIONAL LAND SURVEYORS OF OHIO

12500 N. PEACH RIDGE ROAD
ATHENS, OHIO 45701

JOHN M. BRANNER
Registered Land Surveyor

TELEPHONE
(740) 592-5778

DESCRIPTION OF A 176.08 ACRE TRACT

Situated in Section 7, Town 11, Range 14, Trimble Township, Athens County, Ohio, and being a tract belonging to Ohio Mining Company and described in Volume 125 Page 8 Athens County Deed Records and being more particularly described as follows:
Commencing at the Southeast corner of Section 7;
thence, following the south line of said Section 7, North 86 degrees 21 minutes 46 seconds West, a distance of 916.26 feet to a to an iron pin found, said iron pin found being the POINT OF BEGINNING of the following described tract;
thence, continuing along said line, North 86 degrees 21 minutes 46 seconds West, a distance of 2866.06 feet to a point in the East bank of a creek;
thence, leaving said Section line and following the East bank of said creek, North 62 degrees 52 minutes 05 seconds East, a distance of 492.94 feet to a point;
thence, North 45 degrees 33 minutes 42 seconds East, a distance of 268.01 feet to a point;
thence, North 1 degree 14 minutes 43 seconds East, a distance of 170.96 feet to a point in the South line of a 42.62 acre tract described in Volume 105 Page 648 Official Records of Athens County;
thence, leaving the East bank of said creek and following said 42.62 acre tract, North 88 degrees 38 minutes 33 seconds East, a distance of 175.66 feet to a point;
thence North 44 degrees 18 minutes 14 seconds East, a distance of 1297.30 feet to a point;
thence North 0 degrees 12 minutes 00 seconds East, a distance of 749.98 feet to a point;
thence South 74 degrees 30 minutes 44 seconds West, a distance of 52.54 feet to a point;
thence South 62 degrees 38 minutes 52 seconds West, a distance of 247.46 feet to a point;
thence South 88 degrees 56 minutes 37 seconds West, a distance of 1288.18 feet to a point in the East line of Conrail Rail Road right-of-way;
thence, leaving said 42.62 acre tract and following the East line of said right-of-way, North 21 degrees 18 minutes 16 seconds East, a distance of 898.55 feet to a point at the Southwest corner of Pin Oak Estates Subdivision;
thence, leaving said right-of-way and following the south line of said Subdivision, South 89 degrees 34 minutes 48 seconds East, a distance of 1586.83 feet to a point;
Thence-North 1 degree 16 minutes 38 seconds West, a distance of 30.01 feet to a point;
thence, leaving said Subdivision, North 88 degrees 16 minutes 08 seconds East, a distance of 24.76 feet to an iron pin found at the Northwest corner of a 5.00 acre tract described in Volume 358 Page 617 Athens County Deed Records;
thence, following said tract, South 0 degrees 46 minutes 35 seconds East, a distance of 468.28 feet to a point;
thence South 2 degrees 11 minutes 17 seconds West, a distance of 212.20 feet to a point;
thence North 68 degrees 22 minutes 25 seconds East, a distance of 357.44 feet to a point;
thence south 86 degrees 44 minutes 35 seconds East, a distance of 216.17 feet to a point;
thence North 14 degrees 29 minutes 35 seconds West, a distance of 158.31 feet to a point at the Southwest corner of a 5.00 acre tract described in Volume 343 Page 427 Athens County Deed Records;
thence, leaving said tract and following said 5.00 acre tract, North 88 degrees 22 minutes 24 seconds East, a distance of 719.87 feet to a point in County Road 27;
thence, leaving said tract and following said Road, South 7 degrees 45 minutes 56 seconds East, a distance of 112.52 feet to a point;
thence South 4 degrees 38 minutes 25 seconds West, a distance of 151.74 feet to a point at the Southwest Corner of a 5.00 acre tract described in Volume 269 Page 133 Official Records of Athens County;



Description checked for
Mathematical Accuracy
ATHENS COUNTY
ENGINEER'S OFFICE

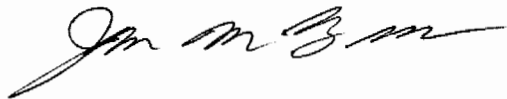
S. Blausen
7-7-2000

000052

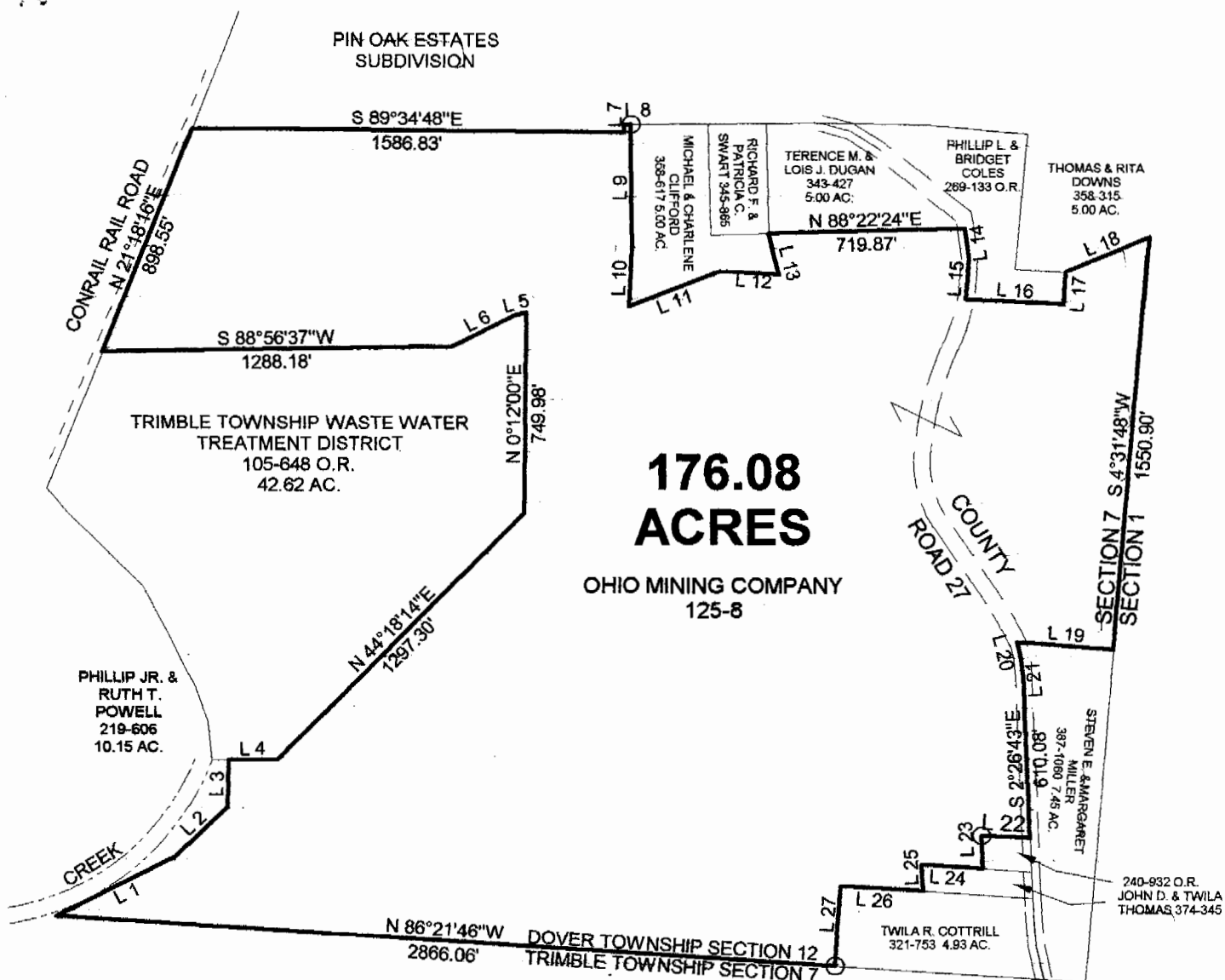
thence, leaving said Road and following said tract, South 87 degrees 05 minutes 35 seconds East, a distance of 358.06 feet to a point;
thence North 2 degrees 54 minutes 25 seconds East, a distance of 122.50 feet to a point at the Southern most corner of a 5.00 acre tract described in Volume 358 Page 315 Athens County Deed Records;
thence, leaving said tract and following said 5.00 acre tract, North 67 degrees 08 minutes 25 seconds East, a distance of 331.60 feet to a point in the East line of said Section 7;
thence, leaving said tract and following said East Section line, South 4 degrees 31 minutes 48 seconds West, a distance of 1550.90 feet to a point at the Northeast corner of a 7.45 acre tract described in Volume 367 Page 1060 Athens County Deed Records;
thence, leaving said Section line and following said tract, North 85 degrees 29 minutes 16 seconds West, a distance of 354.54 feet to a point in the aforementioned County Road 27;
thence, following said Road and said tract, South 14 degrees 07 minutes 16 seconds East, a distance of 64.98 feet to a point;
thence South 6 degrees 05 minutes 16 seconds East, a distance of 65.73 feet to a point;
thence South 2 degrees 26 minutes 43 seconds East, a distance of 610.08 feet to a point at the Northeast corner of a 0.50 acre tract described in Volume 240 Page 932 Official Records of Athens County;
thence, leaving said Road and said 7.45-acre tract and following said 0.50-acre tract, North 86 degrees 32 minutes 46 seconds West, a distance of 175.89 feet to an iron pin found;
thence South 3 degrees 05 minutes 28 seconds East, a distance of 124.50 feet to a point in the North line of a 1.00 acre tract described in Volume 374 Page 345 Athens County Deed Records;
thence, leaving said 0.50 acre tract and following said 1.00 acre tract, North 86 degrees 21 minutes 46 seconds West, a distance of 224.65 feet to a point;
thence, South 2 degrees 48 minutes 56 seconds East, a distance of 100.00 feet to a point in the North line of a 4.93 acre tract described in Volume 321 Page 753 Athens County Deed Records;
thence, leaving said 1.00 acre tract and following said 4.93 acre tract, North 86 degrees 21 minutes 46 seconds West, a distance of 301.74 feet to a point;
thence South 3 degrees 38 minutes 14 seconds West, a distance of 300.00 feet to the POINT OF BEGINNING; said described tract containing 176.08 acres more or less.

Subject to all easements and right-of-way of record.

The above description is based on Deeds and previous Surveys completed by different Surveyors June 30, 2000 By John M. Branner P.S. 6805 12500 N. Peach Ridge Road, Athens Ohio 45701 (740) 592-5778



000053

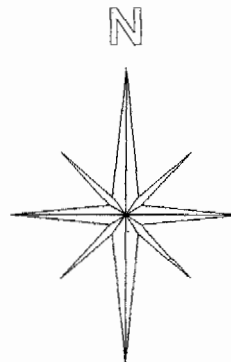


**176.08
ACRES**

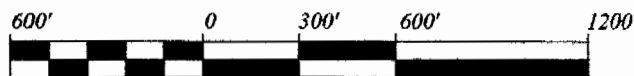
OHIO MINING COMPANY
125-8

Line	Bearing	Distance
1	N 62°52'05"E	492.94'
2	N 45°33'42"E	268.01'
3	N 1°14'43"E	170.96'
4	N 88°38'33"E	175.66'
5	S 74°30'44"W	52.54'
6	S 62°38'52"W	247.46'
7	N 1°16'38"W	30.01'
8	N 88°16'08"E	24.76'
9	S 0°46'35"E	468.28'
10	S 2°11'17"W	212.20'
11	N 68°22'25"E	357.44'
12	S 86°44'35"E	216.17'
13	N 14°29'35"W	158.31'
14	S 7°45'56"E	112.52'
15	S 4°38'25"W	151.74'
16	S 87°05'35"E	358.06'
17	N 2°54'25"E	122.50'
18	N 67°08'25"E	331.60'
19	N 85°29'16"W	354.54'
20	S 14°07'16"E	64.98'
21	S 6°05'16"E	65.73'
22	N 86°32'46"W	175.89'
23	S 3°05'28"E	124.50'
24	N 86°21'46"W	224.65'
25	S 2°48'56"E	100.00'
26	N 86°21'46"W	301.74'
27	S 3°38'14"W	300.00'

○ = IRON PIN FOUND



Graphic Scale



1 INCH = 600 FEET

**SURVEY OF A 176.08 ACRE TRACT
SECTION 7, T. 11, R. 14, TRIMBLE TOWNSHIP
ATHENS COUNTY, OHIO
PLAT BASED ON DEEDS AND PREVIOUS SURVEYS
COMPLETED JUNE 2000**

BEARINGS ARE BASED ON
PREVIOUS SURVEYS AND ARE
USED TO DENOTE ANGLES ONLY

BY: John M. Branner
**JOHN M. BRANNER P.S. 6805
12500 N. PEACH RIDGE ROAD
ATHENS, OHIO 45701
(740) 592-5778**

Description checked for
Mathematical Accuracy
ATHENS COUNTY
COMMISSIONER'S OFFICE

S. Blausch
7-7-2000

TRM #7

000057