

LEGAL DESCRIPTION OF A 3.603 ACRE TRACT

Situated in the Village of Trimble, Section 8, Dover Township, Town 11, Range 14, Athens County, Ohio and described as follows:

Commencing at a found one and one-half inch rod (6" deep) at the southwest corner of Victor (Jr.) and Alison M. Fox (453-2582 O.R.) and assumed (by deeds) to be 452.64 feet north of the approximate and assumed southeast corner of Fraction 7, Section 14 of Town 11, Range 14; thence on an assumed bearing along the south line of Victor (Jr.) and Alison M. Fox (453-2582 O.R.)

South 89°00'00" East a distance of 897.82 feet

to a set iron pin on the north line of Alvin Richmond (235-874 O.R.) at the southeast corner of Victor (Jr.) and Alison M. Fox (453-2582 O.R.) at the southwest corner of Donald E. (Sr.) and Constance Fox (382/867 D.R.) from which a found five-eighth inch rebar with cap (L.F. Swoyer 6765) at the northwest corner of Richmond (235-874 O.R.) bears North 83°59'17" West a distance of 2.73 feet and said set iron pin is THE TRUE POINT OF BEGINNING; thence along the east line of Victor (Jr.) and Alison M. Fox (453-2582 O.R.) and the west line of Donald E. (Sr.) and Constance Fox (382/867 D.R.)

North 03°31'36" East a distance of 426.67 feet

to a point on the old estimated (by deeds) south line of Terrace Drive at the northwest corner of Donald E. (Sr.) and Constance Fox (382/867 D.R.), passing through a set iron pin at 417.00 feet; thence along said south line of Terrace Drive and the north line of Donald E. (Sr.) and Constance Fox (382/867 D.R.) the following four bearings and distances:

South 62°55'01" East a distance of 97.00 feet to a point; thence

South 55°18'49" East a distance of 581.48 feet to a point; thence

South 69°40'51" East a distance of 82.00 feet to a point; thence

North 75°49'09" East a distance of 171.08 feet

to a point at the northeast corner of Donald E. (Sr.) and Constance Fox (382/867 D.R.); thence along the east line of Donald E. (Sr.) and Constance Fox (382/867 D.R.)

South 24°30'00" East a distance of 34.00 feet

, passing through a set iron pin at 13.44 feet, to a set iron pin at the southeast corner of Donald E. (Sr.) and Constance Fox (382/867 D.R.) on the north line of Sherolyn Hartley (412-19 O.R.); thence along the south line of Donald E. (Sr.) and Constance Fox (382/867 D.R.) and the north line of Hartley (412-19 O.R.) and the north line of Donald E. (Jr.) and Miranda Fox (431-90 O.R.)

South 74°15'00" West a distance of 166.80 feet

to a set iron pin, passing through a set iron pin at the northwest corner of Hartley (412-19 O.R.) at the northeast corner of Donald E. (Jr.) and Miranda

Description Checked for  
Mathematical Accuracy  
Athens County  
ENGINEER'S OFFICE  
BY: K. Chatterburg  
DATE: 3-28-11

Fox (431-90 O.R.) at 7.75 feet; thence along the south line of Donald E. (Sr.) and Constance Fox (382/867 D.R.) and the north line of Donald E. (Jr.) and Miranda Fox (431-90 O.R.) and the north line of Richmond (235-874 O.R.)

North 89°00'00" West a distance of 687.18 feet

, passing through a set iron pin (reset a disturbed, five eighth inch rebar with no cap supposed to be a pin originally set by L.F. Swoyer P.S. 6765) at the northwest corner of Donald E. (Jr.) and Miranda Fox (431-90 O.R.) and the northeast corner of Richmond (235-874 O.R.) at 298.00 feet, to the point of beginning and containing 3.603 acres and being a more accurate description of a tract described in Volume 382 Page 867 of the Athens County Deed Records.

Note 1) Unless otherwise noted, all set iron pins are 5/8 inch diameter rebar 30 inches in length and capped with a yellow plastic identification marker inscribed: "TOM TRANTINA RLS-8320"

Note 2) All calls for adjoining owners cited above and deeds shown in parenthesis are given to fulfill County Auditor and County Engineer's requirements and do not necessarily imply an acceptance of the content of said deeds or the seniority of the same.

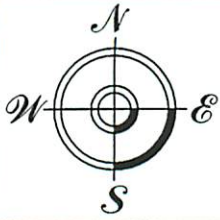
The above description was prepared under the supervision of Thomas Trantina, Registered Professional Land Surveyor No. 8320 and based on a survey performed by Southeastern Land Surveys dated March 26, 2011.

Subject to all deeds and right of ways, reservations, restrictive and protective covenants, utility easements and oil, gas and mineral leases of record in the chain of title in Athens County.

THOMAS C. TRANTINA, P.L.S. #8320  
P.O. BOX 121 CHAUNCEY, OHIO 45719  
PHONE: 740-797-4499

*Tom Trantina*  
*P.S. #8320*

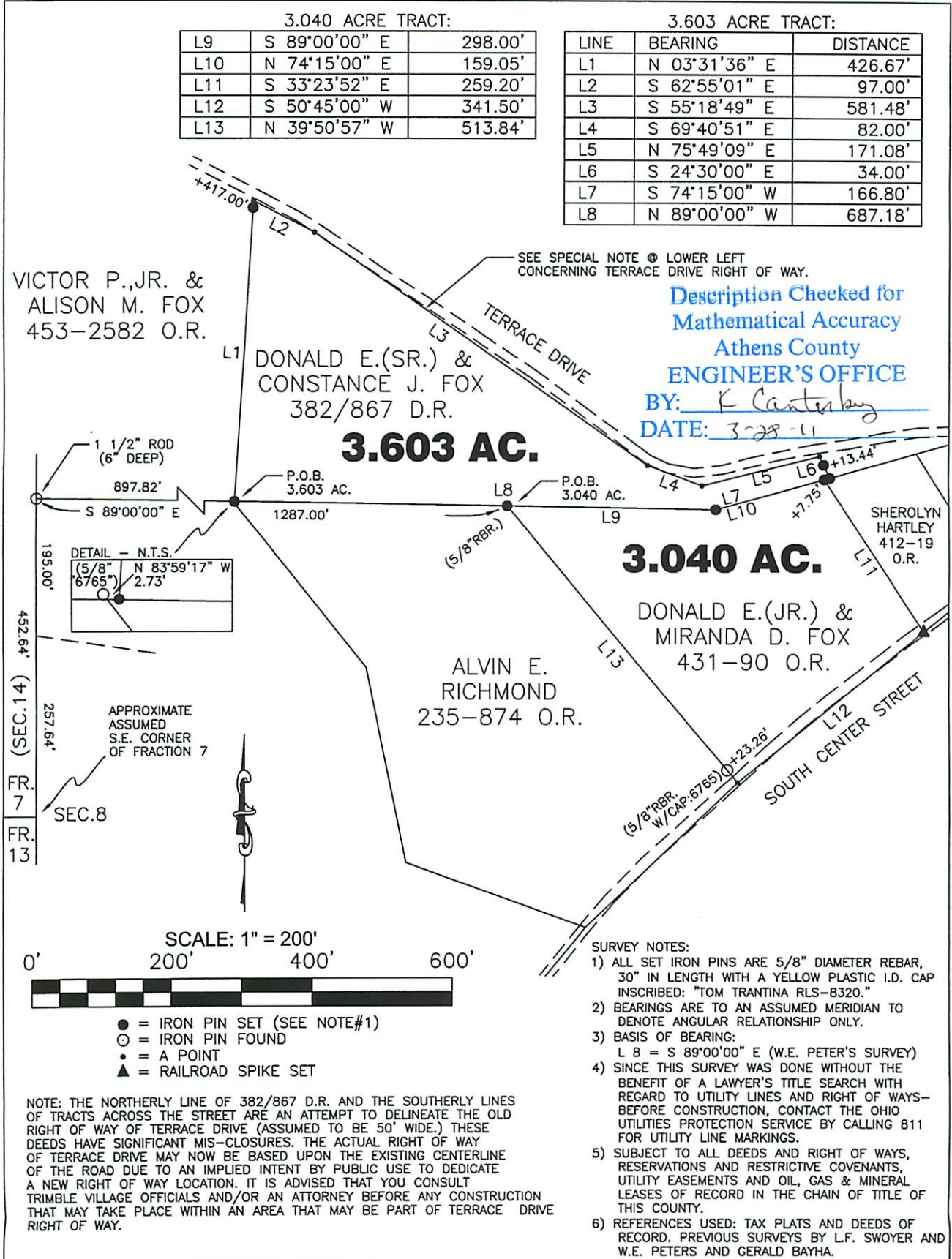




THOMAS C. TRANTINA  
REGISTERED PROFESSIONAL LAND SURVEYOR

P.O. BOX 121, CHAUNCEY, OH. 45719  
740/797-4499

# Southeastern Land Surveys



THIS PLAT NOT VALID WITHOUT MY SEAL & SIGNATURE OR IF IT CONTAINS ALTERATIONS MADE BY OTHERS.

Plat of SURVEY OF A 3.603 ACRE TRACT & A 3.040 ACRE TRACT  
 Scale: 1" = 200'  
 Surveyed for: VICTOR P. FOX, JR. Date: 3/26/11  
 Subdivision - - -  
 Township DOVER Section 8 Town 11 Range 14  
 Corporation VILLAGE OF TRIMBLE County ATHENS Ohio  
 Thomas C. Trantina Job No. 03010211  
 Thomas C. Trantina P.L.S. No. 8320

