

DESCRIPTION OF A 0.37 ACRE TRACT

Situated in Outlot 27, City of Glouster, T.11, R. 14, Trimble Township, Athens County, Ohio, and being a part of a Tract of land described in Volume 366, Page 165, Athens County Deed Records and part of a .018 acre tract surveyed off a Tract of land recorded in Volume 361, Page 492, Athens County Deed Records and being more particularly described as follows:

Commencing at a stone found at the Southeast corner of Outlot 27; thence, West 107.00' to an iron pin set at the Southeast corner of a 0.018 acre tract; thence, along the east line of said tract, N 3°35'30"W, 125.42' to an iron pin set, said pin being the point of beginning for the tract of land herein described:

Thence, N 58°18'40"W, 96.97' to an iron pin set; thence, N 12°46'52"W, 78.29' to an iron pin set; thence, N 32°43'52"W, 70.45' to a point on the South line of Front Street passing an iron pin set at 51.30'; thence, along the South line of Front Street, N 82°30'E, 126.26' to an iron pin set at the Northwest corner of a .02 acre tract surveyed off the Tract of land described in Volume 366, Page 165; thence along the west line of said tract S 3°35'30"E, 169.21' to the South corner of said .02 acre tract and the North corner of the .018 acre tract; thence, continuing S 3°35'30"E, 34.22' along the East line of the .018 acre tract to an iron pin, said pin being the point of beginning and containing 0.37 acres of which 35 square feet is out of the .018 acre tract.

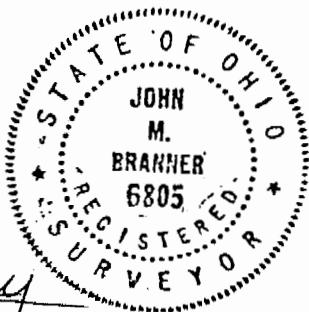
Subject to all easements and rights of way of record

Prepared by:

*John M. Branner*  
JOHN M. BRANNER  
REGISTERED SURVEYOR 6805

Description checked for  
Mathematical Accuracy  
ATHENS COUNTY  
ENGINEER'S OFFICE

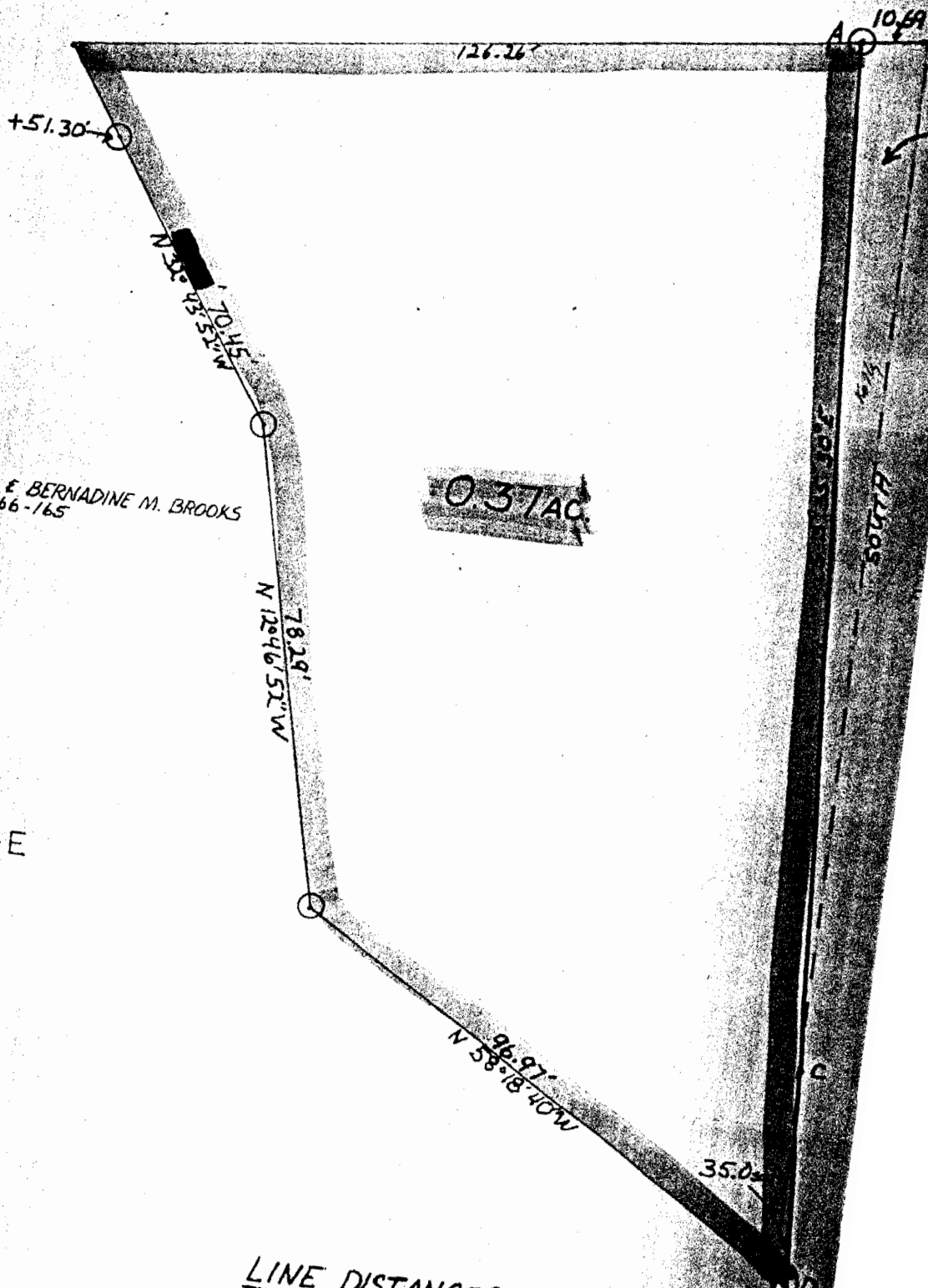
BY: *Charles M. [unclear]*  
DATE: *2-23-84*



39

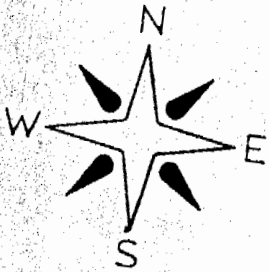
Sec. 9

FRONT S



GAYLORD C. & BERNADINE M. BROOKS  
366-165

0.37 AC



LINE DISTANCES

B <sub>M</sub> -C	170.28'
A <sub>M</sub> -C	

410