

BRANNER SURVEYING

MEMBER-PROFESSIONAL LAND SURVEYORS OF OHIO

12500 N. PEACH RIDGE ROAD
ATHENS, OHIO 45701

JOHN M. BRANNER
Registered Land Surveyor

TELEPHONE
(614) 592-5778

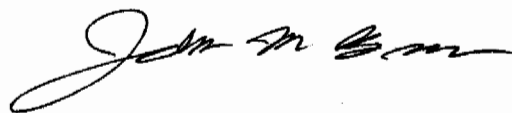
DESCRIPTION OF A 7.015 ACRE TRACT

Situated in Section 12, T. 5, R. 11, Troy Township, Athens County, Ohio and being more particularly described as follows.

Commencing at an iron pin found in the North-east corner of the North-west Quarter of Section 12;
thence, North 89 degrees 50 minutes 15 seconds West, a distance of 322.80 feet to a point in TWP. Road 180, passing an iron pin found at 294.98 feet, said point being the POINT OF BEGINNING;
thence, following said road, South 6 degrees 30 minutes 38 seconds West, a distance of 132.40 feet to a point;
thence, South 29 degrees 01 minute 38 seconds West, a distance of 217.80 feet to a point;
thence, South 32 degrees 25 minutes 22 seconds East, a distance of 218.70 feet to a point;
thence, South 0 degrees 05 minutes 22 seconds East, a distance of 59.55 feet to a point;
thence, leaving said road, North 72 degrees 06 minutes 56 seconds West, a distance of 172.17 feet to an iron pin set, passing an iron pin set at 17.79 feet;
thence, North 38 degrees 45 minutes 17 seconds West, a distance of 390.07 feet to an iron pin set;
thence, South 66 degrees 44 minutes 34 seconds West, a distance of 467.96 feet to an iron pin set;
thence, North 15 degrees 40 minutes 42 seconds West, a distance of 414.83 feet to an iron pin set;
thence, South 89 degrees 19 minutes 30 seconds East, a distance of 490.77 feet to an iron pin set;
thence, North 89 degrees 58 minutes 10 seconds East, a distance of 462.68 feet to a to the POINT OF BEGINNING; said described tract containing 7.015 acres (305,571.0434 square feet).

Subject to all easements and right-of-ways of record.
All iron pins set are 5/8 inch x 30 inch long rebar.

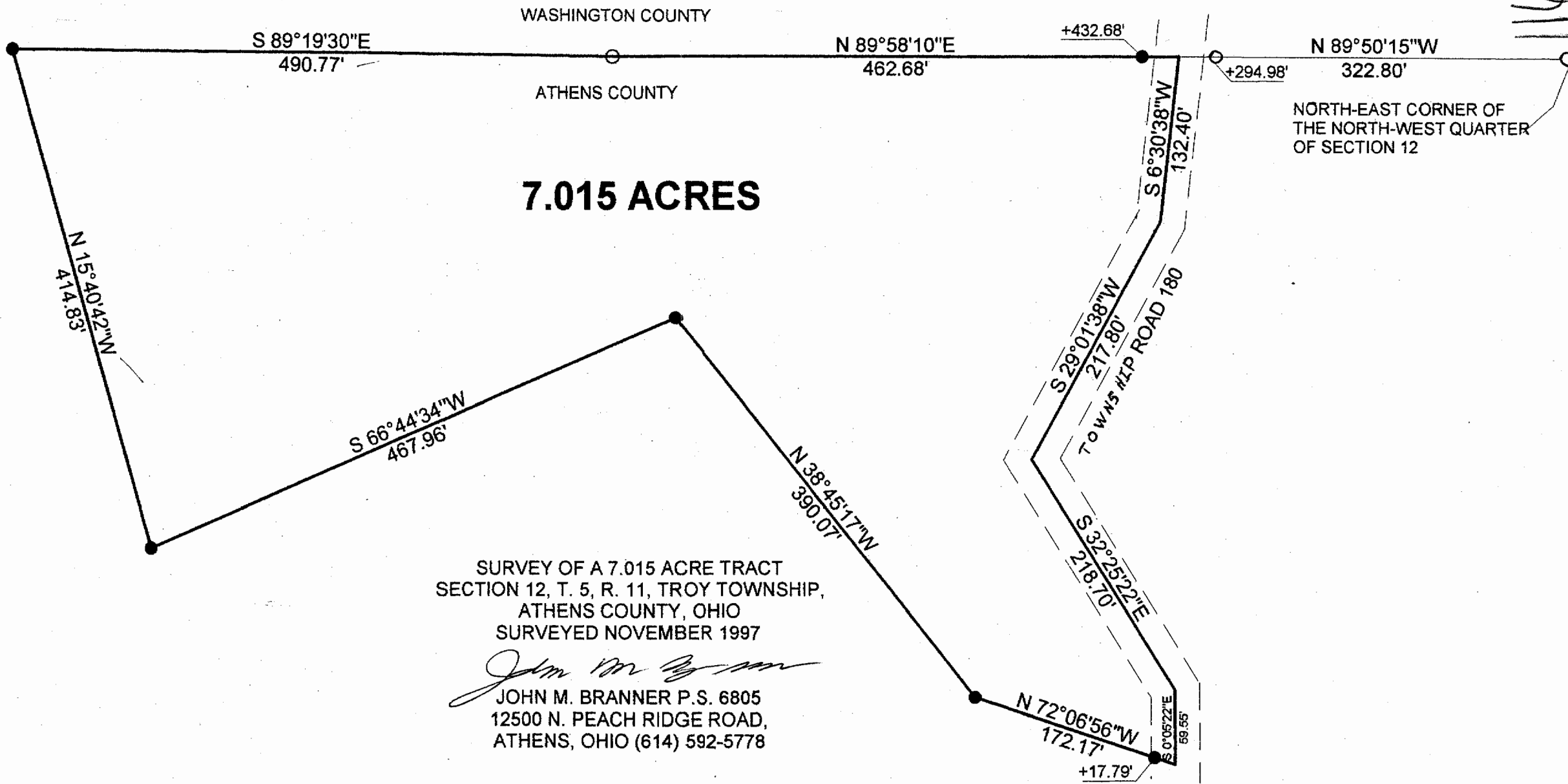
The above description is based on a field survey completed november 1997 By: John M. Branner P.S. 6805, 12500 N. Peach Ridge Road, Athens, Ohio 45701 (614) 592-5778



Description checked for
Mathematical Accuracy
ATHENS COUNTY
ENGINEER'S OFFICE
BY: K. Cantelero
DATE: 11-19-97



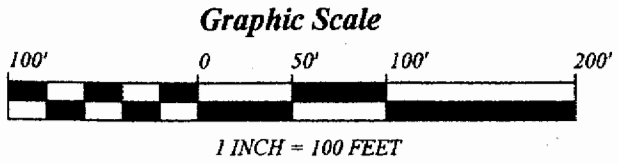
115



7.015 ACRES

SURVEY OF A 7.015 ACRE TRACT
 SECTION 12, T. 5, R. 11, TROY TOWNSHIP,
 ATHENS COUNTY, OHIO
 SURVEYED NOVEMBER 1997

John M. Branner
 JOHN M. BRANNER P.S. 6805
 12500 N. PEACH RIDGE ROAD,
 ATHENS, OHIO (614) 592-5778



- = IRON PIN FOUND
- = IRON PIN SET

BEARINGS ARE BASED ON A
 PREVIOUS SURVEY AND ARE
 USED TO DENOTE ANGLES
 ONLY

Description checked for
 Mathematical Accuracy
 ATHENS COUNTY
 ENGINEER'S OFFICE
 BY: *K. G. [Signature]*
 DATE: 11-19-97

