

BRANNER SURVEYING

MEMBER-PROFESSIONAL LAND SURVEYORS OF OHIO

12500 N. PEACH RIDGE ROAD
ATHENS, OHIO 45701

JOHN M. BRANNER
Registered Land Surveyor

TELEPHONE
(614) 592-5778

DESCRIPTION OF A 7.85 ACRE TRACT

Situated in Section 12, T.5, R.11, Troy Township, Athens County, Ohio and being more particularly described as follows:

Commencing at the South-west corner of the North-west quarter of Section 12; thence, South 89 degrees 32 minutes 21 seconds East, a distance of 1127.21 feet to an iron pin found; thence, North 0 degrees 01 minute 26 seconds East, a distance of 543.94 feet to an iron pin set, said point being the POINT OF BEGINNING; thence, continuing North along said line, a distance of 833.25 feet, to an iron pin set; thence, East, a distance of 341.48 feet to a point in the center of Township road 180, passing an iron pin set at 321.48 feet; thence, with said road, South 0 degrees 44 minutes 48 seconds East, a distance of 146.06 feet to a point; thence, South 19 degrees 17 minutes 39 seconds East, a distance of 101.57 feet to a point; thence, South 22 degrees 38 minutes 55 seconds East, a distance of 53.95 feet to a point; thence, leaving said road, North 89 degrees 24 minutes 17 seconds East, a distance of 105.93 feet to a point; thence, South 80 degrees 29 minutes 52 seconds East, a distance of 5.61 feet to a point; thence, South 5 degrees 45 minutes 26 seconds East, a distance of 42.53 feet to an iron pin set, passing an iron pin set at 5.98 feet; thence, South 86 degrees 20 minutes 17 seconds West, a distance of 107.57 feet to a point in the aforementioned Township road 180, passing an iron pin set at 95.60 feet; thence, with said road, South 4 degrees 50 minutes 17 seconds East, a distance of 93.88 feet to a point; thence, South 4 degrees 32 minutes 29 seconds East, a distance of 91.39 feet to a point; thence, South 5 degrees 55 minutes 10 seconds East, a distance of 110.56 feet to a point; thence, South 9 degrees 21 minutes 24 seconds East, a distance of 204.66 feet to a point; thence, leaving said road, North 89 degrees 30 minutes 21 seconds West, a distance of 466.28 feet to the POINT OF BEGINNING, passing an iron pin set at 20.00 feet; said described tract containing 7.85 acres.

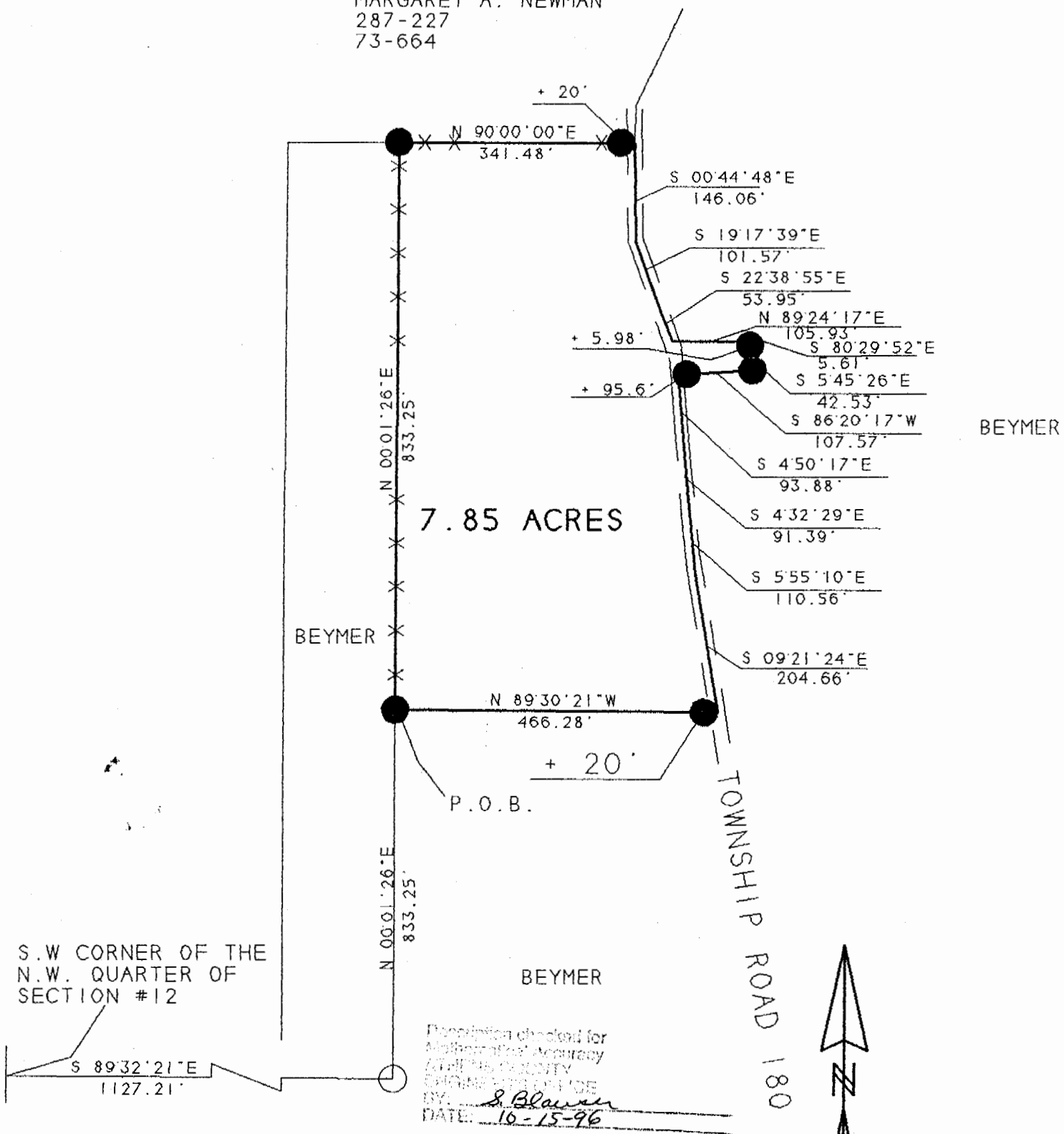
Subject to all easements and right of way of record.
All iron pin set are 5\8"x 30" rebar.

The above description is based on a field survey completed
October 1996 by John M. Branner P.S. 6805

APPROVED FOR
RECORDING
BY
DATE
S. Blaine
10-15-96

23

MARGARET A. NEWMAN
287-227
73-664



7.85 ACRES

BEYMER

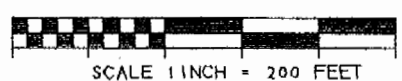
BEYMER

BEYMER

Description checked for
Mathematical Accuracy
ATLANTA COUNTY
ENGINEERING FIRM
BY: *J. Blanner*
DATE: 10-15-96

SURVEY OF A 7.85 ACRE TRACT
SEC. 12. T.5. R.15. TROY TWP.
ATHENS COUNTY, OHIO
SURVEYED OCTOBER 1996

JOHN M. BRANNER P.S. 6805
12500 N. PEACH RIDGE ROAD
ATHENS, OHIO 592-5778



- SCALE 1 INCH = 200 FEET
- - IRON PIN FOUND
- - IRON PIN SET

BEARINGS SHOWN HEREON
ARE BASED ON A SURVEY OF AN
6.53 ACRE TRACT AND ARE USED TO DENOTE
ANGLES ONLY

25

TR 12