

Description Checked for
Mathematical Accuracy
Athens County
ENGINEER'S OFFICE

BY: John E. Branner
DATE: 6/26/15

Description of a 17.55 Acre Tract

Situated in Section 19, T. 5, R.11, Troy Township, Athens County, Ohio and being all of that same tract as recorded in Volume 493, Page 2174 of the Official Records of Athens County and being more particularly described as follows:

Commencing at a stone found at the South-east corner of the North-west Quarter of Section 19
Thence, along the North-lines of Burrough (430-1094 O.R.), Moss (456-973 O.R.) and
Matheny (2-248 O.R.):
North 86 degrees 37 minutes 33 seconds West, 1326.79 feet to an Oak Tree Corner;
Thence, along the East-line of Matheny (2-248 O.R.):
North 2 degrees 32 minutes 51 seconds East, 225.32 feet to an iron pin previously set;
Thence, along the lines of Putman (245-179 O.R.):
South 89 degrees 59 minutes 50 seconds East, 77.00 feet to an iron pin previously set;
North 2 degrees 32 minutes 51 seconds East, 267.72 feet to a mag -nail previously set in Huckleberry Road;
Thence, along said road:
South 89 degrees 42 minutes 41 seconds East, 101.89 feet to the **point of beginning** for the tract of land
herein described:
Thence, leaving said road, and along the lines of Holbert (379-434 O.R.)
North 2 degrees 33 minutes 30 seconds East, 446.91 feet to an iron pin found, passing an iron pin found at
30.00 feet;
South 86 degrees 37 minutes 22 seconds East, 210.70 feet to an iron pin found;
North 2 degrees 33 minutes 30 seconds East, 370.00 feet to an iron pin found;
South 86 degrees 38 minutes 15 seconds East, 898.80 feet to an iron pin previously set;
South 2 degrees 18 minutes 52 seconds West, 622.39 feet to a mag- nail previously set in Huckleberry Road;
Thence, along said road and new lines created by this Survey:
South 73 degrees 27 minutes 19 seconds West, 351.36 feet
South 78 degrees 26 minutes 38 seconds West, 137.80 feet;
South 89 degrees 52 minutes 24 seconds West, 647.10 feet to the point of beginning and containing
17.55 acres.

Subject to all easements and rights of way of record.

Iron pins previously set are 5/8" by 30" long rebar with plastic cap stamped "Branner P.S. 6805"

Bearings based on Grid North, N.A.D. 83

The above description is based on a field survey completed October 2013 by John M. Branner P.S. 6805

Legal Description Pre-Approval

APPROVED

All transfers are subject to
Athens County Conveyance Standards

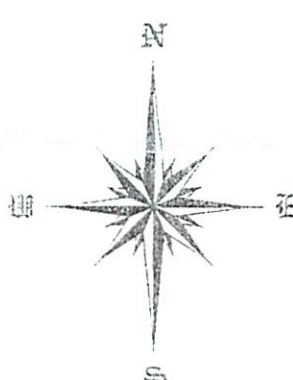
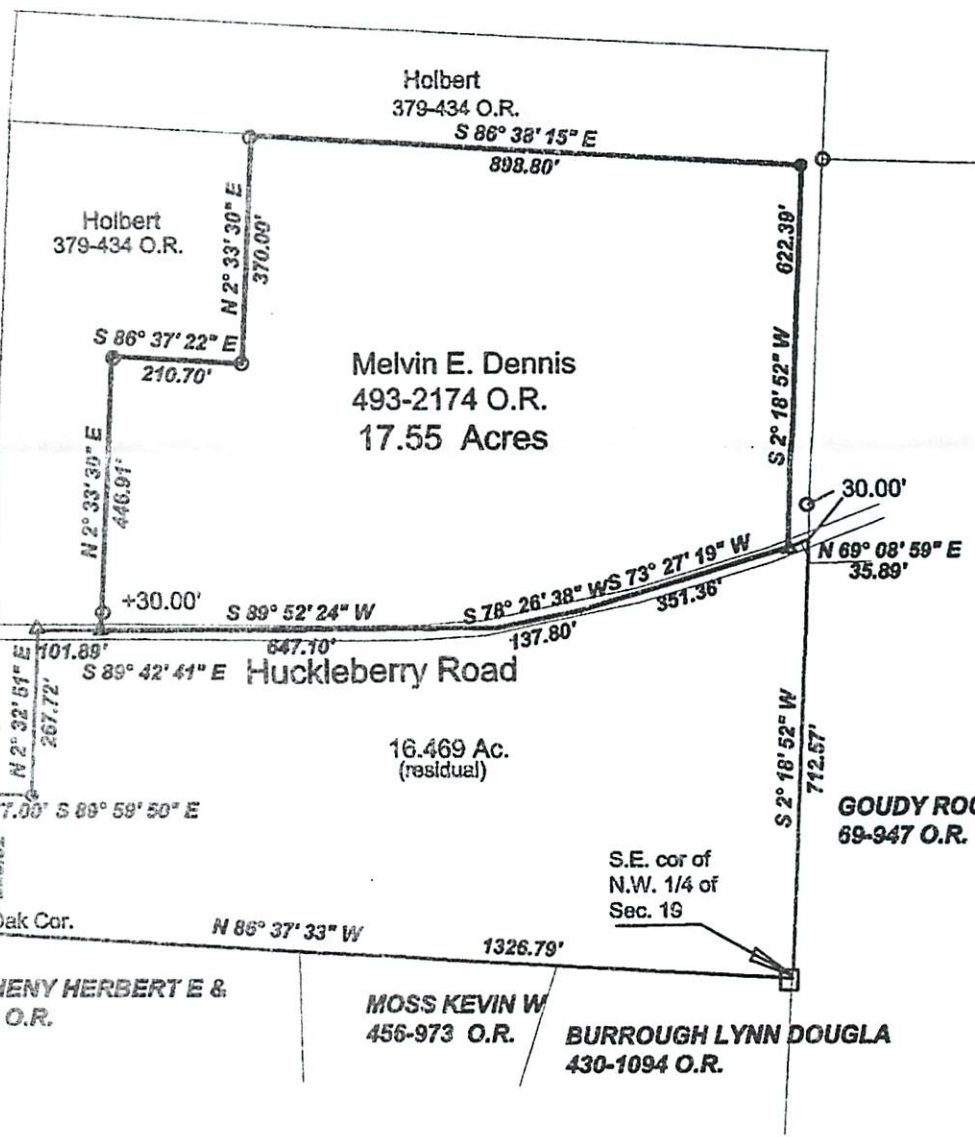
JUN 26 2015

Jill Thompson
Athens County Auditor



Description Checked for
Mathematical Accuracy
Athens County
ENGINEER'S OFFICE

BY: *John M. Branner*
DATE: 6/26/15



Scale 1 Inch = 300 feet

- = iron pin found
- = iron pin previously set 5/8" x 30" rebar w/ plastic cap stamped "Branner P.S. 6805"
- = stone found
- △ = Mag Nail previously Set

Bearings: Grid North N.A.D. 83
Ref. Docs. Tax Plat -deeds- Adjoining Surveys

Survey of a 17.55 Acre Tract in
in Section 19, T.5, R.11, Troy Twp, Athens Co., O
Prepared June 2015

John M. Branner
John M. Branner P.S. 6805
62 East First Street
The Pains, Ohio 45780

