

HUGHES LAND SURVEYING

PO BOX 216
MINERAL WELLS, WV 26150
1-304-489-9640

Situated in the State of Ohio, Athens County, Troy Township, Section 22, Fraction 23 Township 5, Range 11, bounded and described as follows:

Beginning at a 5/8" capped rebar set in a stone pile found at the northeast corner of Fraction 23, also the northeast corner of Section 22, THENCE S 03 54' 44" W a distance of 1392.78 feet to a point in the center of Gillian Hubbard Road, Township Road No. 175, passing a pipe found that bears S 85 22' 20" E a distance of 1.00 feet at distance of 123.10 feet and a pipe found at 1363.50 feet; THENCE along the center of Gillian Hubbard Road the following two (2) courses, S 68 27' 07" W a distance of 72.63 feet to a point; THENCE S 61 24' 55" W a distance of 235.34 feet to a point; THENCE leaving said Road, N 02 55' 04" E a distance of 602.14 feet to a mine bolt found, passing a 5/8" capped rebar set at 18.06 feet and a mine bolt found at 158.56 feet; THENCE N 78 39' 08" W a distance of 308.99 feet to a point in the center Ireland Road, County Road 59, passing a mine bolt found at 288.99 feet; THENCE along the center of Ireland Road the following twelve (12) courses, N 11 25' 07" E a distance of 31.03 feet to a point; THENCE N 10 27' 53" E a distance of 205.80 feet to a point; THENCE N 01 43' 22" W a distance of 202.90 feet to a point; THENCE N 18 41' 59" W a distance of 51.31 feet to a point; THENCE N 56 49' 46" W a distance of 59.64 feet to a point; THENCE N 80 36' 54" W a distance of 70.77 feet to a point; THENCE N 69 30' 13" W a distance of 65.06 feet to a point; THENCE N 44 00' 18" W a distance of 40.32 feet to a point; THENCE N 18 35' 00" W a distance of 62.70 feet to a point; THENCE N 06 49' 00" W a distance of 54.80 feet to a point; THENCE N 11 10' 00" E a distance of 88.00 feet to a point; THENCE N 16 49' 00" E a distance of 139.00 feet to a point on the north line of Section 22, where a pipe found bears N 86 39' 00" W a distance of 616.70 feet; THENCE leaving said road and along the north line of Section 22, S 86 39' 00" E a distance of 799.86 feet, passing a 5/8" capped rebar set at 29.50 feet, to the Point of Beginning, containing 17.6581 Acres.

Subject to all legal highways, right of ways, easements, restrictions and reservations of record.

Bearings are based on an assumed meridian and are used to denote horizontal angles only.

All 5/8" rebars set are 36" long with a orange plastic cap stamped HUGHES PS 7182.

This legal description was prepared by Charles F. Hughes, Jr. Professional Surveyor No. 7182, based on a field survey in April 2004.

and Jim Checked for
Mathematical Accuracy
Athens County
ENGINEER'S OFFICE

BY: S. Blause
DATE: 5-10-04

Charles F. Hughes Jr.
Charles F. Hughes, Jr. PS 7182



5-5-2004
Date

TRY # 22

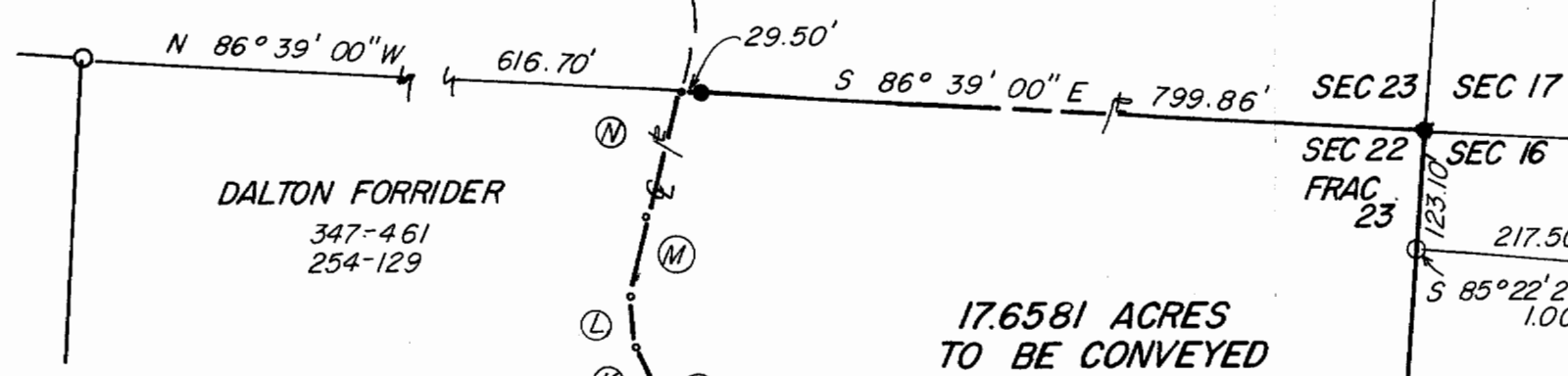
TREY ACRES INC.
5-941

PROJECT NO. 04-0410

PREPARED FOR

PAUL & CRYSTAL SALLEE

STATE OF OHIO
ATHENS COUNTY
TROY TOWNSHIP
T 5N - R 11W
SECTION 22
FRACTION 23



17.6581 ACRES
TO BE CONVEYED

LEGEND

- 5/8" CAPPED REBAR SET
- PIPE FOUND
- MINE BOLT FOUND

REFERENCE:

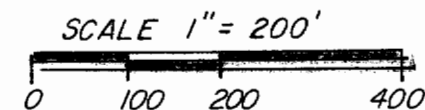
TAX MAP SEC. 16, 22, AND 23
SURVEY PLAT BY D. BOICE
P.S. 6709
JAME DEBRULAR 2-9-93

BASIS FOR BEARINGS
ARE ASSUMED.



Description Checked for
Mathematical Accuracy
Athens County
ENGINEER'S OFFICE

BY: *S. Blause*
DATE: 5-10-04



CALL TABLE:

Ⓐ	S 68° 27' 07" W	72.63'
Ⓑ	S 61° 24' 55" W	235.34'
Ⓒ	N 11° 25' 07" E	31.03'
Ⓓ	N 10° 27' 53" E	205.80'
Ⓔ	N 01° 43' 22" W	202.90'
Ⓕ	N 18° 41' 59" W	51.31'
Ⓖ	N 56° 49' 46" W	59.64'
Ⓕ	N 80° 36' 54" W	70.77'
Ⓖ	N 69° 30' 13" W	65.06'
Ⓖ	N 44° 00' 18" W	40.32'
Ⓜ	N 18° 35' 00" W	62.70'
Ⓛ	N 06° 49' 00" W	54.80'
Ⓜ	N 11° 10' 00" E	88.00'
Ⓝ	N 16° 49' 00" E	139.00'

Charles F. Hughes, Jr.
CHARLES F. HUGHES, JR.
P.S. 7182
5-5-2004
DATE

CHARLES F. HUGHES, JR.
PROFESSIONAL SURVEYOR

P.O. BOX 216, MINERAL WELLS, WV 26150
1-304-489-9640

DATE ASSIGNED:	DWN BY: JLH	FIELD CONTROL: F.H.
DATE COMPLETED:	DWN BY:	SCALE: 1" = 200'