

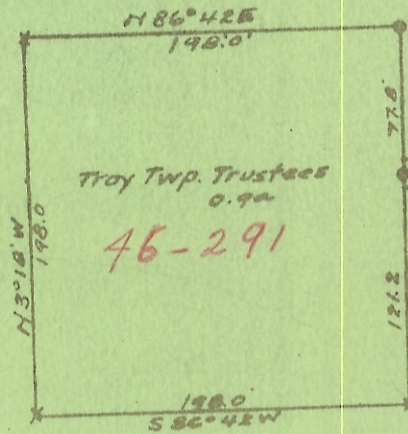
R. R. Cutler
Belpre, Ohio

BETHEL CEMETERY
in
SOUTHEAST QUARTER
of
SECTION 32, TOWN 5N, RANGE 11W
in
TROY TOWNSHIP, ATHENS COUNTY, OHIO



SCALE: 1 Inch equals 100 Feet

LEGEND:
⊙ equals State Highway Marker
x equals Stone Marker
● equals Iron Pin Marker

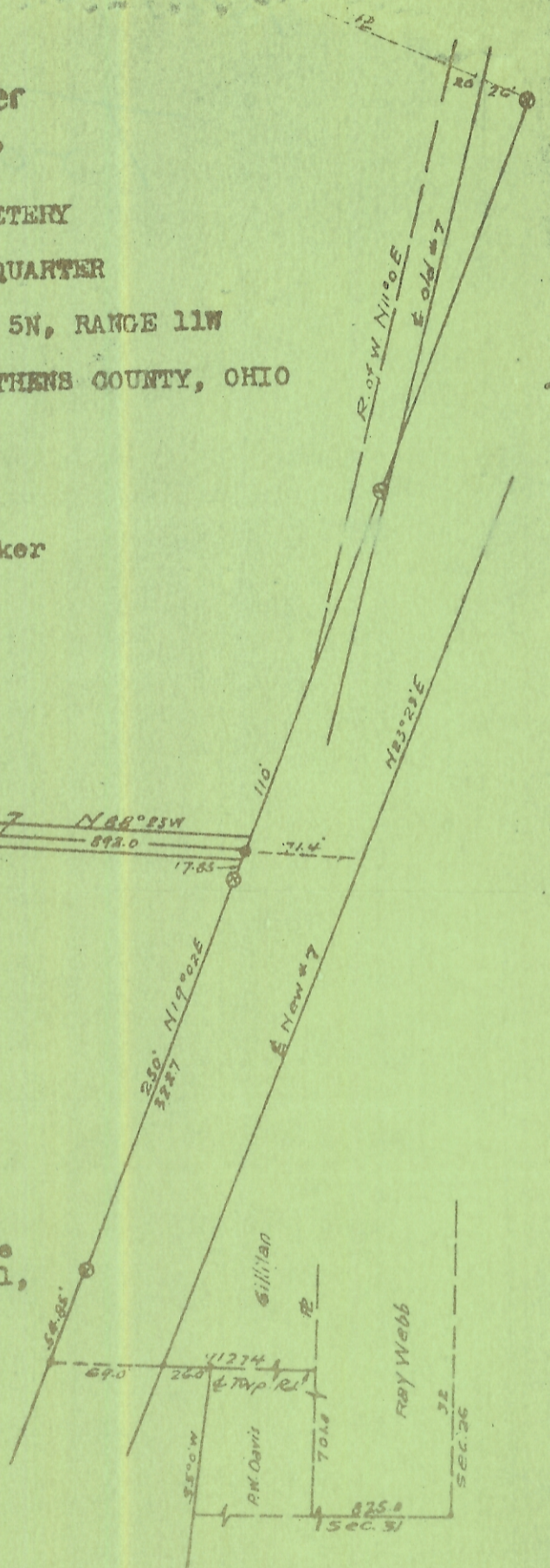


Florence M. Gillilan

CERTIFICATION

I certify that this plat is an exact record of a survey made by me for the Trustees of Troy Township, March 9-11, 1954.

R. R. Cutler
.....
R. R. CUTLER
Professional Engineer
Reg. #E-1101



Copy Made 2/1-57 uopmc

1881- 17c removed for school
1881- 17c " " Cemetery