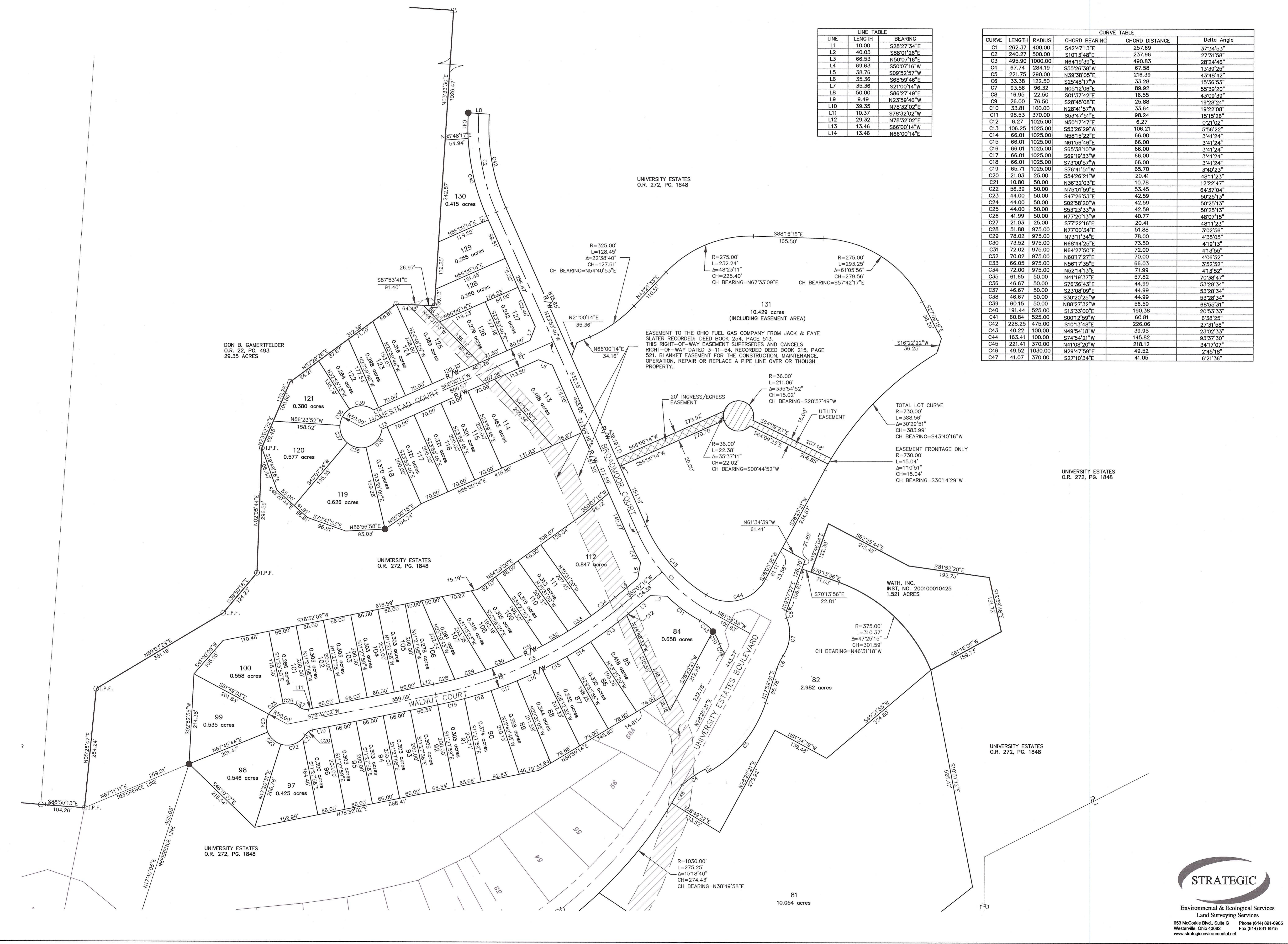


LINE	LENGTH	BEARING
L1	10.00	S28°27'34"E
L2	40.03	S88°01'26"E
L3	66.53	N50°07'16"E
L4	69.63	S50°07'16"W
L5	38.76	S09°52'57"W
L6	35.36	S68°59'46"E
L7	35.36	S21°00'14"W
L8	50.00	S86°27'49"W
L9	9.49	N23°59'46"W
L10	39.35	N78°32'02"E
L11	10.37	S78°32'02"W
L12	29.52	N78°32'02"E
L13	13.46	S66°00'14"W
L14	13.46	N66°00'14"E

CURVE	LENGTH	RADIUS	CHORD BEARING	CHORD DISTANCE	Delta Angle
C1	282.37	400.00	S42°47'13"E	257.69	37°34'53"
C2	240.27	500.00	S10°13'44"E	232.96	27°31'58"
C3	495.90	1000.00	N64°19'39"E	490.83	28°24'46"
C4	67.74	284.19	S55°28'38"W	67.58	13°39'25"
C5	221.75	290.00	N39°38'06"E	216.39	43°48'42"
C6	33.38	122.50	S25°48'17"W	33.28	15°36'53"
C7	93.56	98.32	N05°12'06"E	89.92	55°39'20"
C8	16.95	22.50	S01°37'42"E	16.55	43°09'59"
C9	26.00	76.50	S28°45'08"E	25.88	18°28'24"
C10	33.81	100.00	N28°41'57"W	33.64	19°22'08"
C11	98.53	370.00	S53°47'51"E	98.24	15°15'26"
C12	6.27	1025.00	N50°17'47"E	6.27	02°10'2"
C13	106.25	1025.00	S53°26'29"W	106.21	5°56'22"
C14	66.01	1025.00	N58°15'22"E	66.00	34°1'24"
C15	66.01	1025.00	N61°56'46"E	66.00	34°1'24"
C16	66.01	1025.00	S65°38'10"W	66.00	34°1'24"
C17	66.01	1025.00	S69°19'33"W	66.00	34°1'24"
C18	66.01	1025.00	S73°00'57"W	66.00	34°1'24"
C19	65.71	1025.00	S76°41'51"W	65.70	34°0'23"
C20	21.03	25.00	S84°28'21"W	20.41	48°11'33"
C21	10.80	50.00	N36°32'03"E	10.78	12°22'47"
C22	56.39	50.00	N75°01'59"E	53.45	64°37'04"
C23	44.00	50.00	S47°26'53"E	42.59	50°25'13"
C24	44.00	50.00	S02°58'20"W	42.59	50°25'13"
C25	44.00	50.00	S53°23'33"W	42.59	50°25'13"
C26	41.99	50.00	N72°20'13"W	40.77	48°07'15"
C27	21.03	25.00	S77°22'16"E	20.41	48°11'23"
C28	51.88	975.00	N77°00'34"E	51.88	3°02'56"
C29	78.02	975.00	N73°11'34"E	78.00	4°35'05"
C30	73.52	975.00	N68°44'25"E	73.50	41°01'5"
C31	72.02	975.00	N64°27'50"E	72.00	41°35'6"
C32	70.02	975.00	N60°17'27"E	70.00	43°06'52"
C33	66.05	975.00	N56°17'35"E	66.03	3°52'52"
C34	72.00	975.00	N52°14'13"E	71.99	41°3'52"
C35	61.65	50.00	N41°19'37"E	57.82	70°38'47"
C36	46.67	50.00	S76°36'43"E	44.99	53°28'34"
C37	46.67	50.00	S23°08'09"E	44.99	53°28'34"
C38	46.67	50.00	S30°20'25"W	44.99	53°28'34"
C39	60.15	50.00	N88°27'32"W	56.59	68°55'31"
C40	191.44	525.00	S13°33'00"E	190.38	20°53'33"
C41	60.84	525.00	S00°12'59"W	60.81	6°38'25"
C42	228.25	475.00	S10°13'48"E	226.06	27°31'58"
C43	40.22	100.00	N49°54'18"W	39.95	23°02'33"
C44	163.41	100.00	S74°54'21"W	145.82	93°37'30"
C45	221.41	370.00	N41°08'20"W	218.12	34°17'07"
C46	49.52	1030.00	N28°47'59"E	49.52	2°45'18"
C47	41.07	370.00	S27°10'34"E	41.05	6°21'36"



EASEMENT TO THE OHIO FUEL GAS COMPANY FROM JACK & FAYE SLATER RECORDED DEED BOOK 294, PAGE 515. THIS RIGHT-OF-WAY EASEMENT SUPERSEDES AND CANCELS RIGHT-OF-WAY DATED 3-11-54, RECORDED DEED BOOK 215, PAGE 521. BLANKET EASEMENT FOR THE CONSTRUCTION, MAINTENANCE, OPERATION, REPAIR OR REPLACE A PIPE LINE OVER OR THROUGH PROPERTY.

STRATEGIC
 Environmental & Ecological Services
 Land Surveying Services
 653 McCorkle Blvd., Suite G Phone (614) 891-6905
 Westerville, Ohio 43082 Fax (614) 891-6915
 www.strategicenvironmental.net