

Situated in Fraction 1 and Fraction 6 of Section 15, T.11, R.15, Waterloo Township, Athens County Ohio and being more particularly described as follows:

Commencing at the North-west corner of Section 15, thence, South 54 Degrees 18 Minutes 11 Seconds East, 2696.26 feet (deed) to the West-line of Fraction 6; thence, along said line, South 03 Degrees 31 Minutes 34 Seconds East, 1140.03 feet to a point in the center-line of State Route 56, said point being the point of beginning for the tract of land herein described:

thence, along said road, S 77 34' 17" E, a distance of 84.02 feet;
 thence S 80 46' 18" E, a distance of 269.07 feet;
 thence S 85 43' 34" E, a distance of 204.07 feet;
 thence S 89 46' 31" E, a distance of 215.09 feet;
 thence N 85 44' 49" E, a distance of 205.32 feet;
 thence N 82 09' 52" E, a distance of 172.05 feet;
 thence N 81 08' 38" E, a distance of 182.74 feet;
 thence N 80 46' 54" E, a distance of 146.74 feet;
 thence, leaving said road and along Grantor's -lines, S 3 54' 04" W, a distance of 261.02 feet to an iron pin set at a fence corner;
 thence S 84 45' 28" E, a distance of 54.77 feet to an iron pin set at a fence corner;
 thence S 4 09' 53" W, a distance of 1044.91 feet to a fence corner;
 thence N 84 56' 02" W, a distance of 345.77 feet to an iron pin set;
 thence S 3 57' 56" W, a distance of 164.43 feet to an iron pin set;
 thence along a random-line N 89 43' 18" W, a distance of 331.03 feet to an iron pin set;
 thence N 74 09' 49" W, a distance of 218.99 feet to an iron pin set;
 thence N 67 34' 11" W, a distance of 327.98 feet to an iron pin set;
 thence N 73 02' 16" W, a distance of 152.42 feet to an iron pin set at an existing fence corner;
 thence, along Grantor's line, S 89 49' 00" W, a distance of 162.22 feet to an iron pin set;
 thence N 3 51' 59" E, a distance of 1200.30 feet to the POINT OF BEGINNING; said described tract containing 44.07 acres.
 Subject to all easements and rights of way of record.
 All iron pins set are 5\8 inch rebar by 30 inches long.
 The above description is based on a field survey completed May, 1996 by John M. Branner P.S. 6805

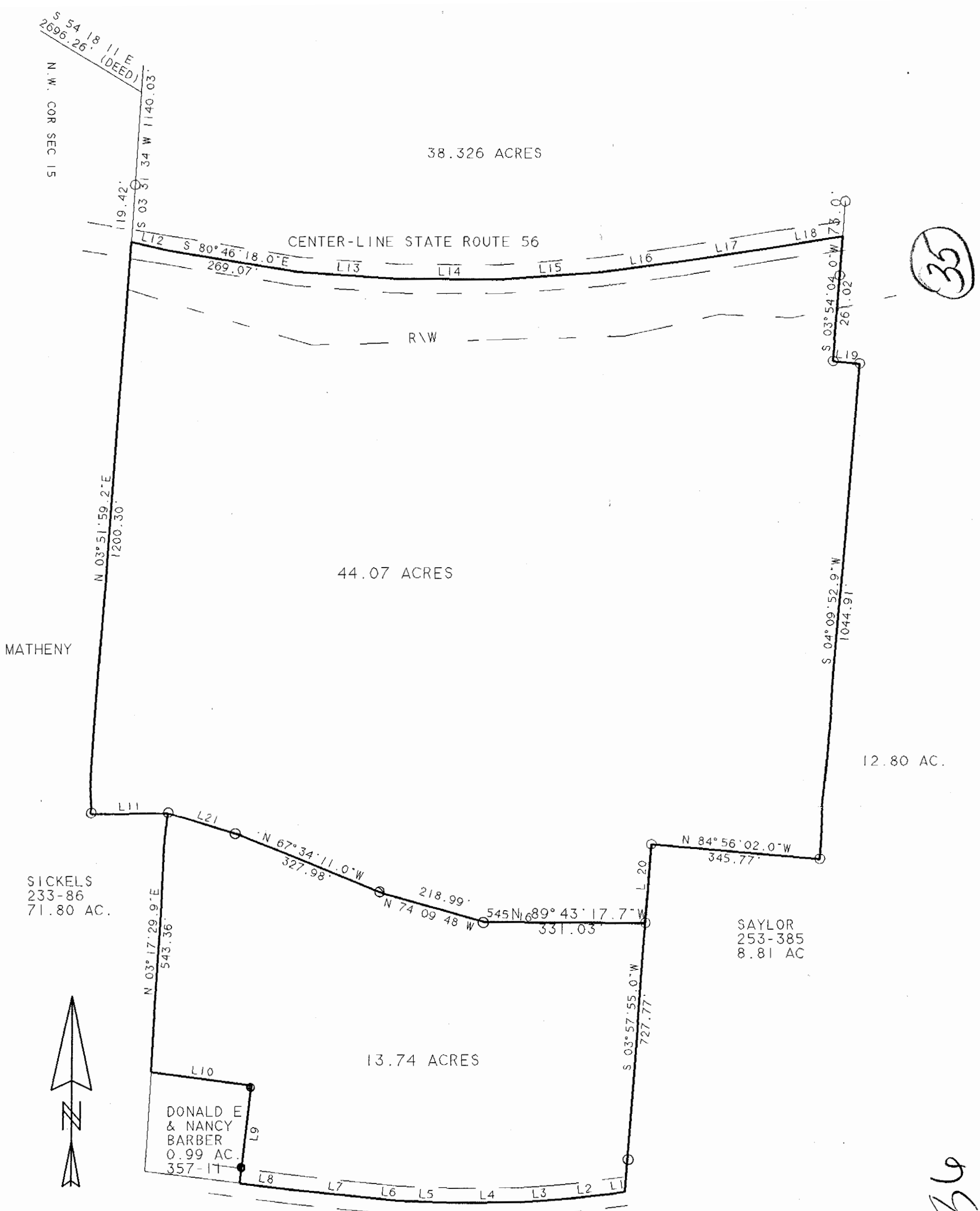
Description checked for
 Mathematical Accuracy
 ATHENS COUNTY
 ENGINEER'S OFFICE

BY: S. Blanner

DATE: 5-9-96

WAT #15

33



LINE	BEARING	DISTANCE
L 1	S 81° 53' 52" W	27.05'
L 2	S 83° 14' 18" W	110.24'
L 3	S 86° 11' 12" W	78.27'
L 4	S 89° 21' 05" W	139.28'
L 5	N 87° 21' 37" W	115.34'
L 6	N 84° 56' 02" W	40.96'
L 7	N 83° 51' 05" W	180.88'
L 8	N 82° 54' 05" W	106.93'
L 9	N 06° 24' 11" E	207.21'
L 10	N 82° 46' 59" W	212.10'
L 11	S 89° 49' 00" W	162.22'
L 12	S 77° 34' 17" E	84.02'
L 13	S 85° 43' 34" E	204.07'
L 14	S 89° 46' 31" E	215.09'
L 15	N 85° 44' 49" E	205.32'
L 16	N 82° 09' 52" E	172.05'
L 17	N 81° 08' 38" E	182.74'
L 18	N 80° 46' 54" E	146.74'
L 19	S 84° 45' 27" E	54.77'
L 20	S 03° 57' 56" W	164.43'
L 21	N 73° 02' 16" W	152.42'

SURVEY OF A 44.07 ACRE TRACT AND A 13.74 ACRE TRACT IN FRACTION 1 AND FRACTION 6 IN SECTION 15, T.11, R.15, WATERLOO TOWNSHIP, ATHENS CO., O.

SURVEYED MAY 1996

JOHN M. BRANNER P.S. 6805
12500 N. PEACH RIDGE ROAD
ATHENS, OHIO 614-592-5778



SCALE: 1 INCH = 200 FEET
- IRON PIN SET
- IRON PIN FOUND
BEARINGS BASED ON 38.326 ACRE TRACT TO NORTH