

WAT 23

BRANNER SURVEYING
MEMBER-PROFESSIONAL LAND SURVEYORS OF OHIO
12500 PEACH RIDGE ROAD
ATHENS, OHIO 45701

JOHN M. BRANNER
Registered Land Surveyor

TELEPHONE
(614) 592-5778

DESCRIPTION OF A 5.16 ACRE TRACT

Situated in Fraction 23, Section 22, T.11, R.15, Waterloo Township, Athens County, Ohio and being more particularly described as follows:

Beginning at a fence corner at Grantor's North-east corner, said corner being North 85 Degrees 50 Minutes West, 3871.33 feet and South 04 Degrees 10 Minutes West, 1052.46 feet from the North-east corner of Fraction 23, thence, along Grantor's East-line South 24 Degrees 00 Minutes East, 607.58 feet to a point in State Route 56, passing an iron pin set by a fence post at 537.58 feet; thence, along said State Route, North 84 Degrees 43 Minutes 15 Seconds West, 81.20 feet to a point; thence, South 77 Degrees 05 Minutes 51 Seconds West, 129.53 feet to a point; thence, South 85 Degrees 24 Minutes 54 Seconds West, 85.96 feet to a point; thence, North 76 Degrees 14 Minutes 23 Seconds West, 81.05 feet to a point; thence, North 71 Degrees 23 Minutes 40 Seconds West, 139.24 feet to a point; thence, North 83 Degrees 02 Minutes 44 Seconds West, 32.77 feet to a point; thence, leaving said road, North 03 Degrees 00 Minutes East, 530.12 feet to an iron pin set; passing an iron pin set at 50.00 feet; thence, South 87 Degrees 00 Minutes East, 261.50 feet to the point of beginning and containing 5.16 acres

Subject to all easements and rights of way of record.

John M. Branner
John M. Branner P. S. 6805

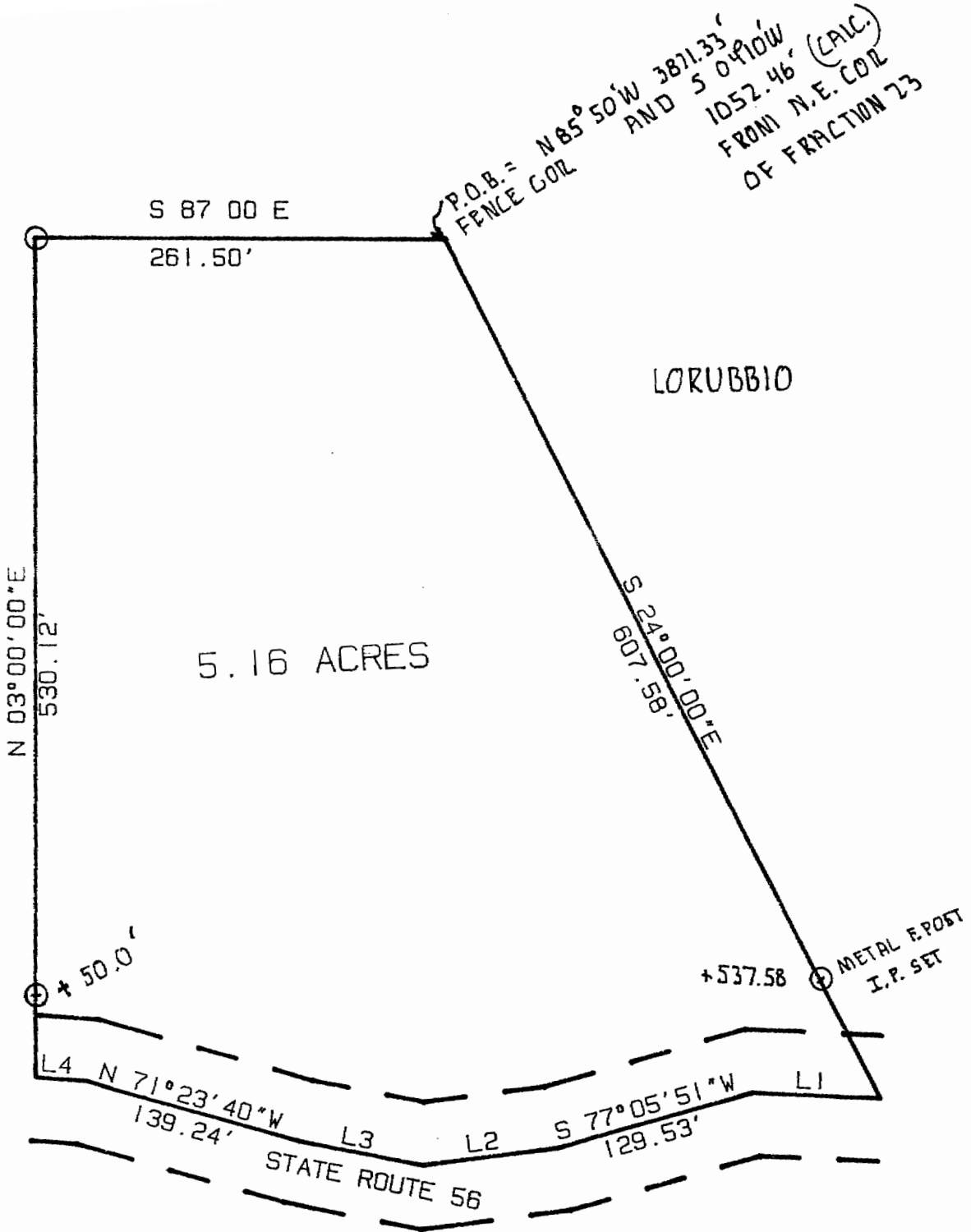
Description checked for
Mathematical Accuracy
ATHENS COUNTY
ENGINEER'S OFFICE
BY: *R. L. Nelson*
DATE: 4-17-92

32

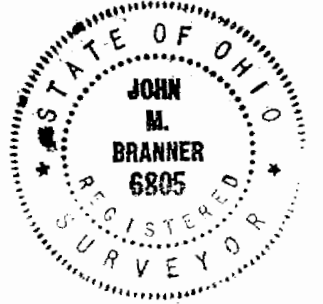
WAT
#22

CONKEY

LORUBBIO



SCALE 1 INCH = 100 FEET
 = IRON PIN SET
 = IRON PIN FOUND



LINE	BEARING	DISTANCE
L 1	N 84° 43' 15" W	81.20'
L 2	S 85° 24' 54" W	85.96'
L 3	N 76° 14' 23" W	81.05'
L 4	N 83° 02' 44" W	32.77'

SURVEY OF A 5.16 ACRE TRACT
 IN FR. 23, SECTION 22, T. 11,
 R. 15, WATERLOO TOWNSHIP,
 ATHENS COUNTY, OHIO

SURVEYED APRIL 1992
John M. Branner
 JOHN M. BRANNER P.S. 6805
 12500 N. PEACH RIDGE ROAD
 ATHENS, OHIO

34